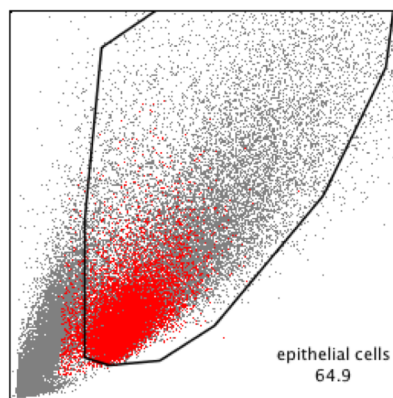
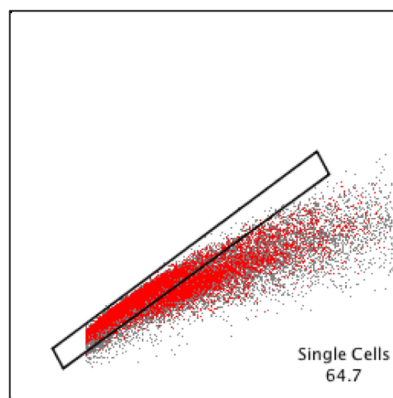


WENR_WT



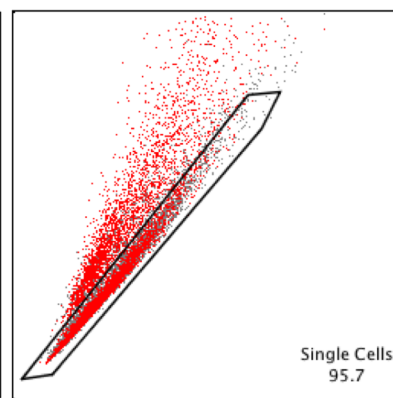
Ungated

- (epithelial cells)
Single Cells
Single Cells
viability



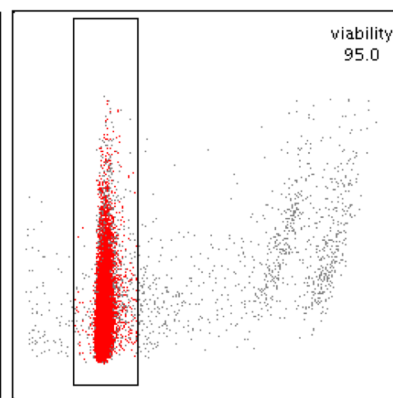
epithelial cells

epithelial cells
- (Single Cells)
- (Single Cells)
viability



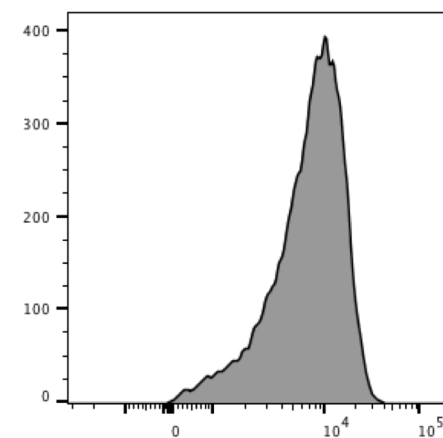
epithelial cells
Single Cells

epithelial cells
- (Single Cells)
- (Single Cells)
viability



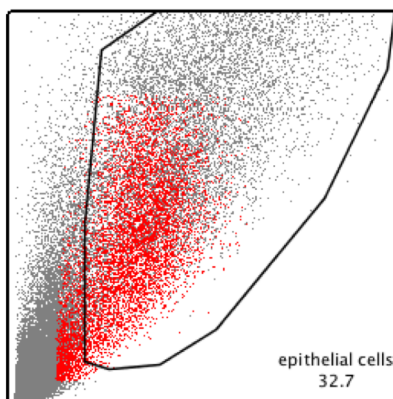
epithelial cells
Single Cells
Single Cells

epithelial cells
Single Cells
Single Cells
viability



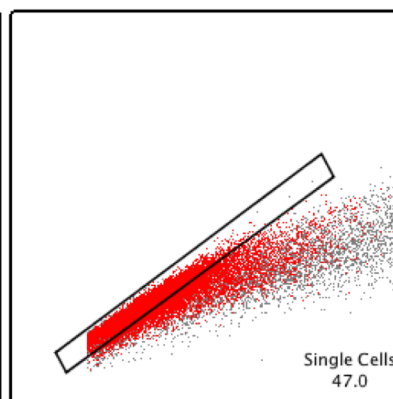
450_50-Violet-A :: SCA1

D4 ENR_WT



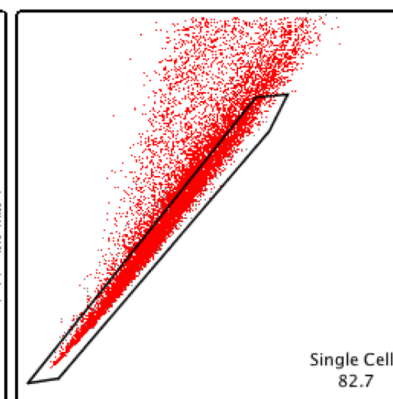
Ungated

- (epithelial cells)
Single Cells
Single Cells
viability



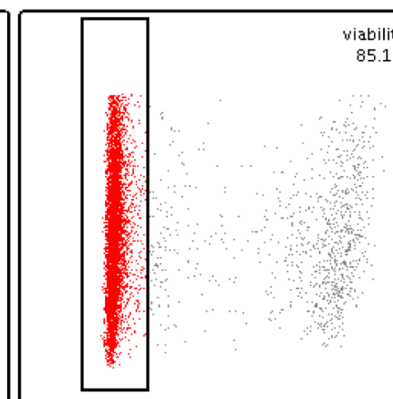
epithelial cells

epithelial cells
- (Single Cells)
- (Single Cells)
viability



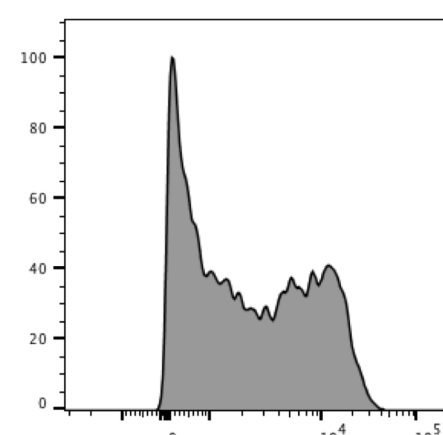
epithelial cells
Single Cells

epithelial cells
- (Single Cells)
- (Single Cells)
viability



epithelial cells
Single Cells
Single Cells

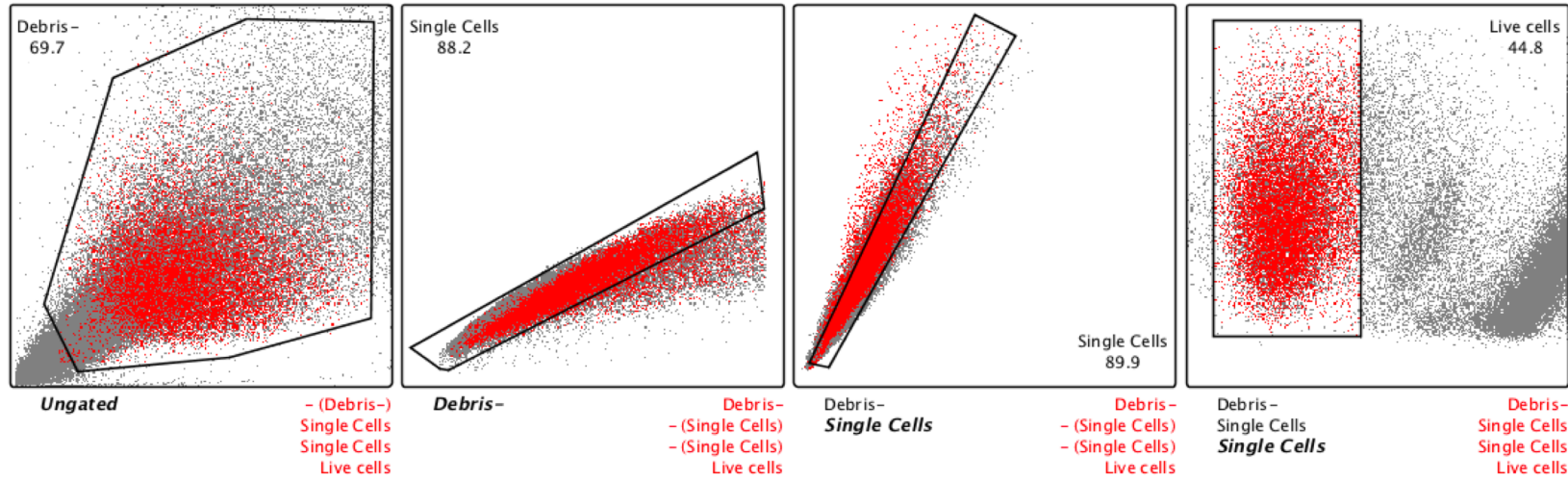
epithelial cells
Single Cells
Single Cells
viability



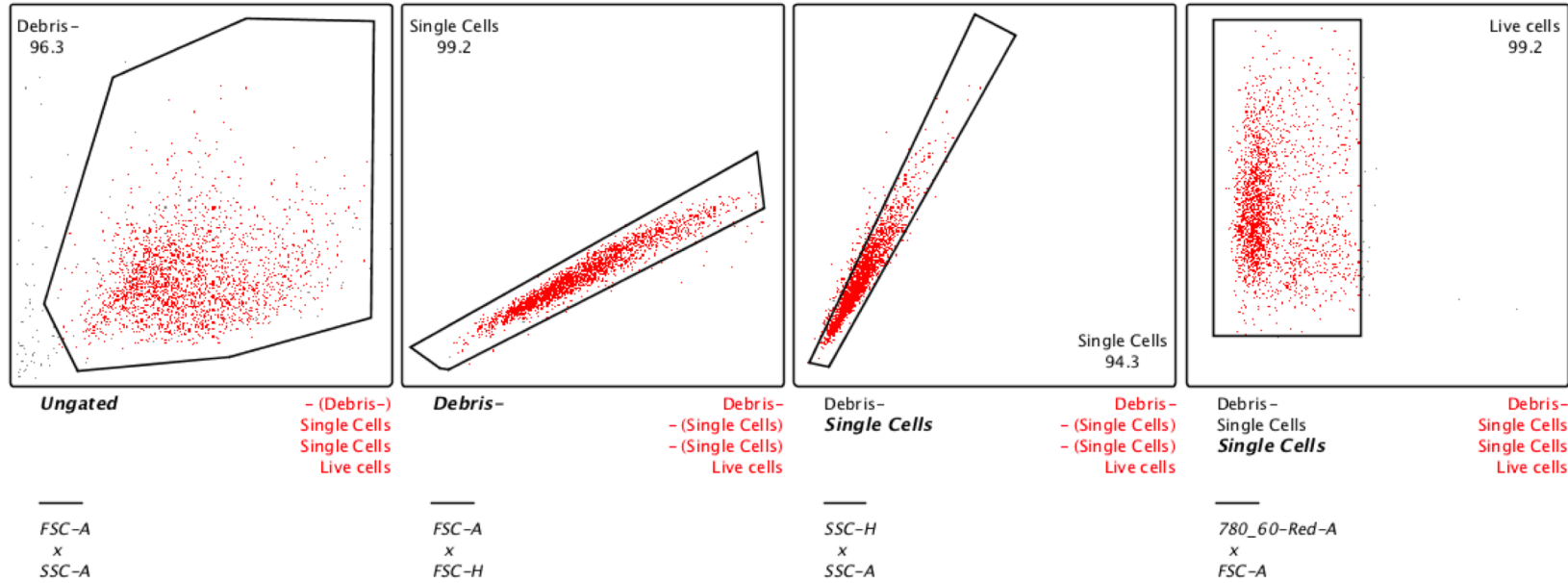
450_50-Violet-A :: SCA1

Example gating strategy (back gating) for SCA-1 MFI analysis

WENR_AHRKO.2 (pre-sort)



WENR_AHRKO.2 (purity check)



Example gating strategy (back gating) for ATAC-seq sort