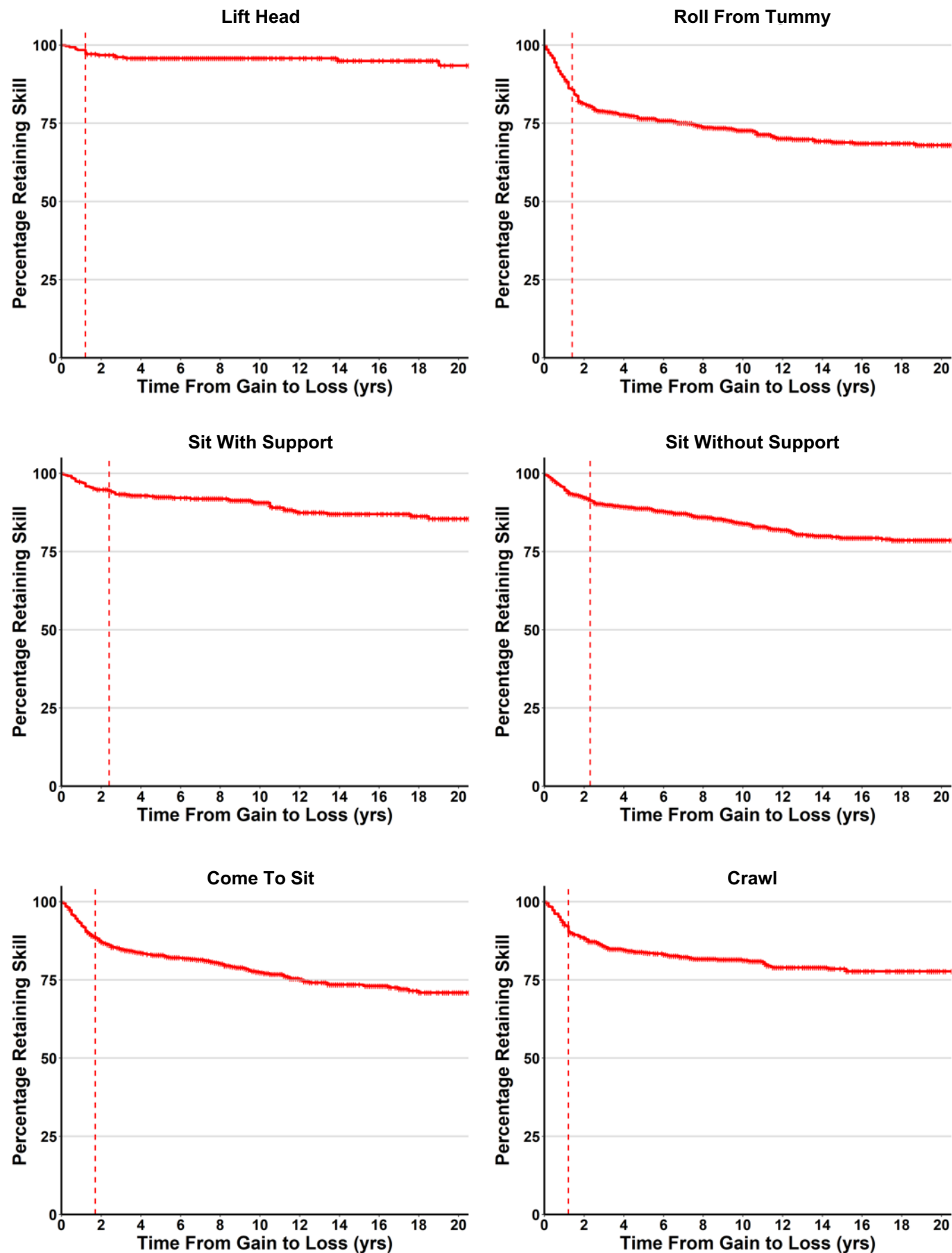
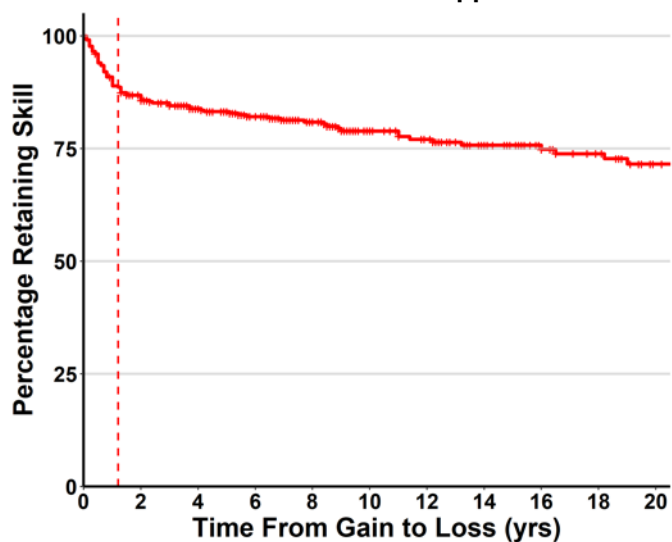


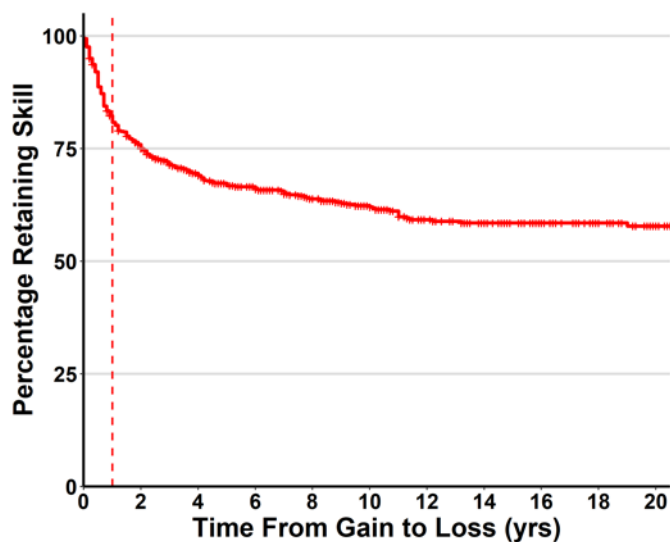
Figure S3: Cumulative incidence curves of time from skill gain to loss. Censored data points are shown as cross lines. The red vertical line is the median time of gain to loss for that specific skill.



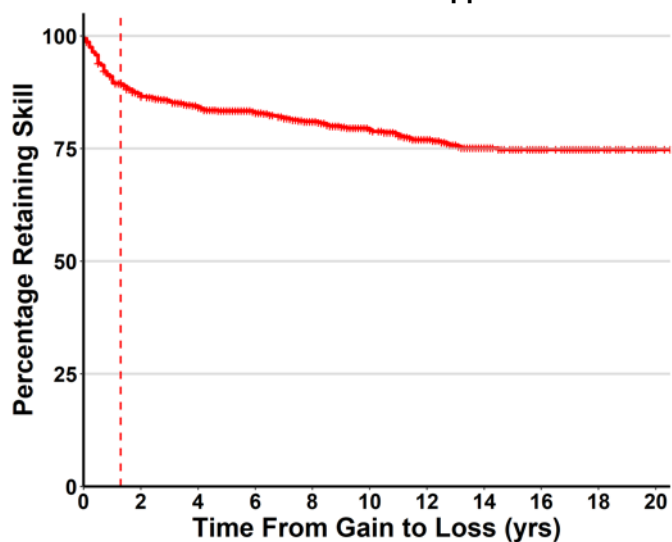
Stand With Support



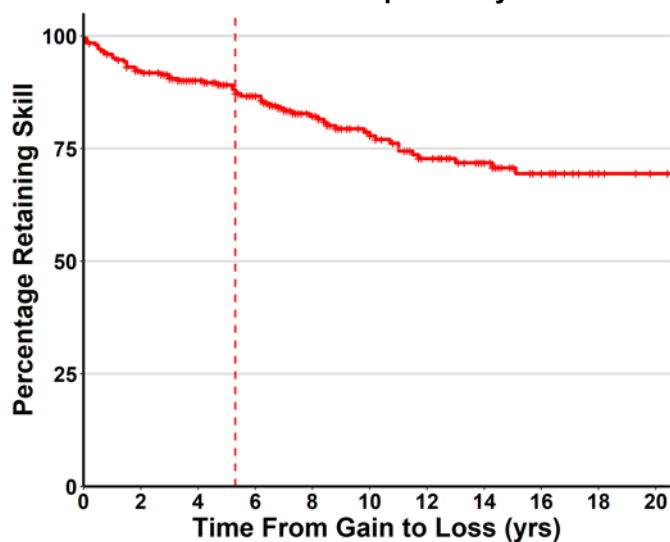
Pull To Stand



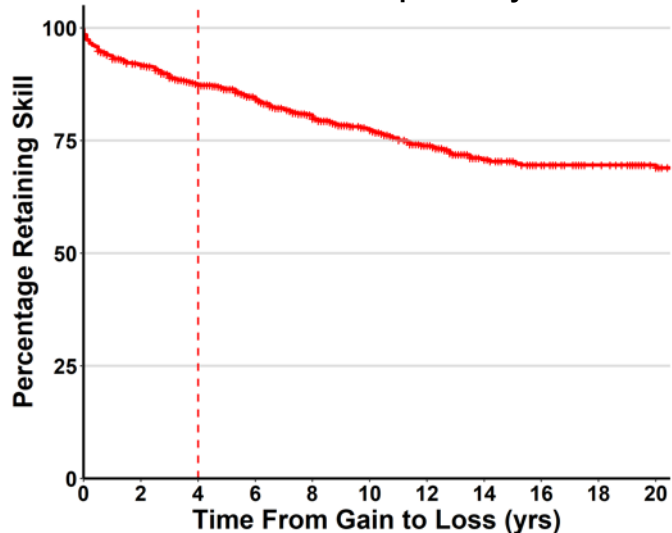
Walk With Support



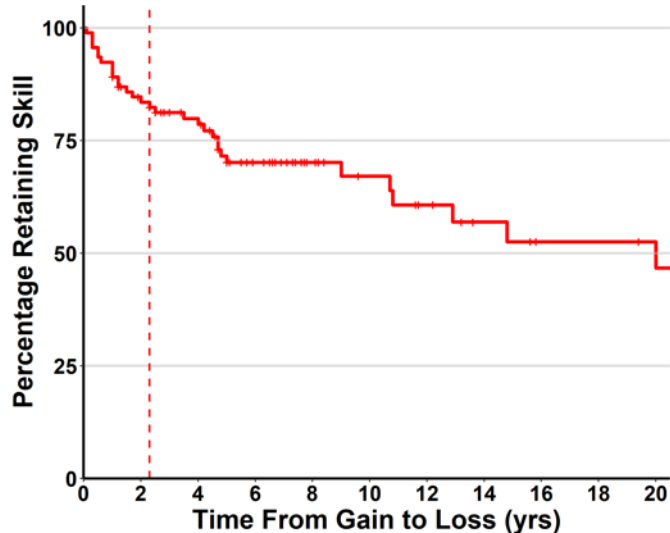
Stand Independently



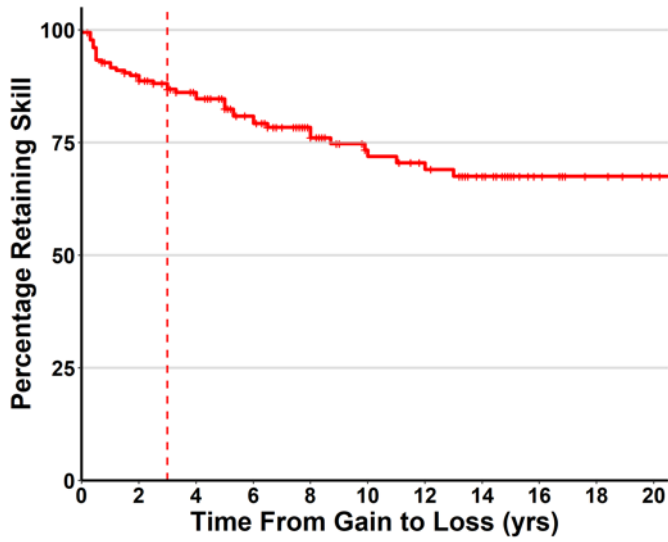
Walk Independently



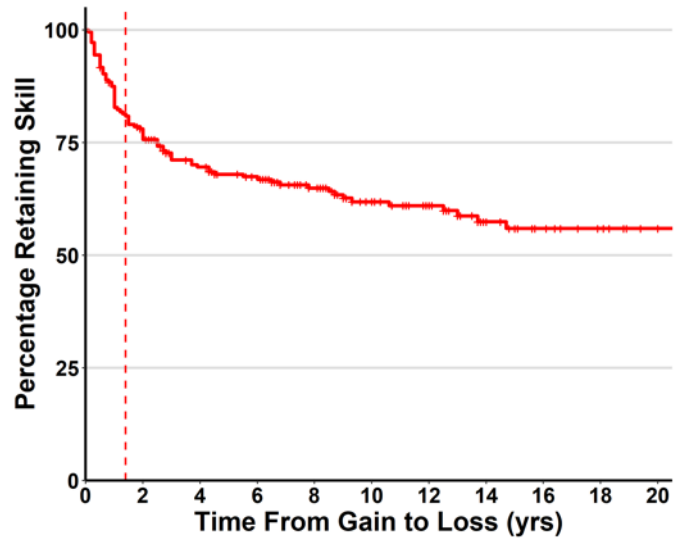
Ran 10 Feet



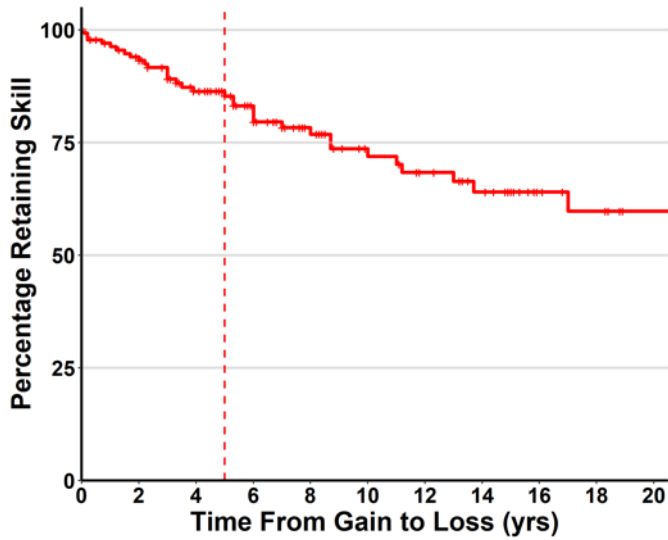
Up Stairs With Help



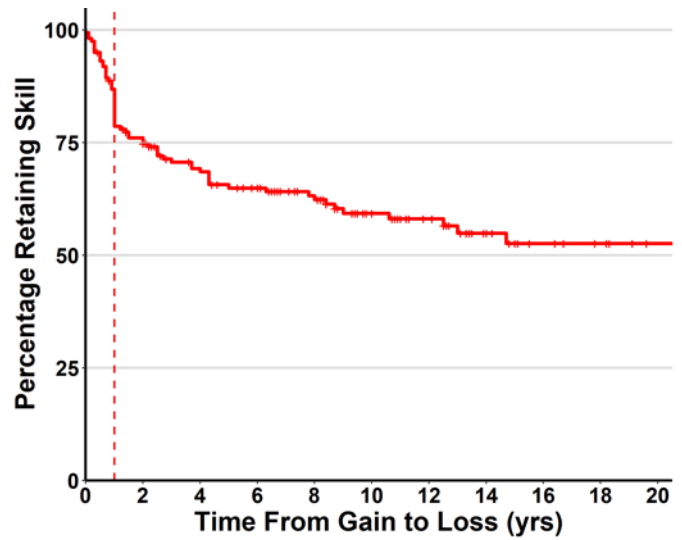
Up Stairs Without Help



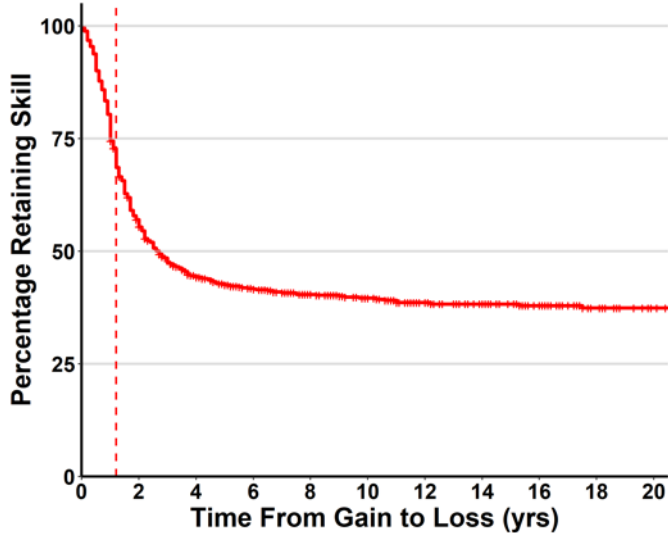
Down Stairs With Help



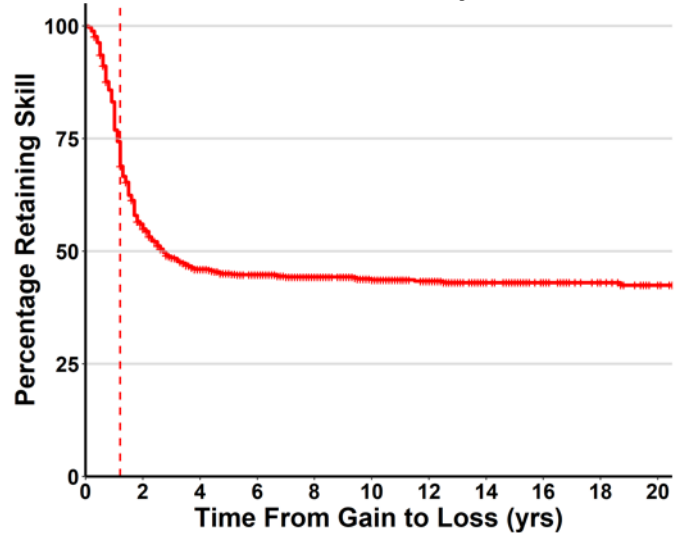
Down Stairs Without Help



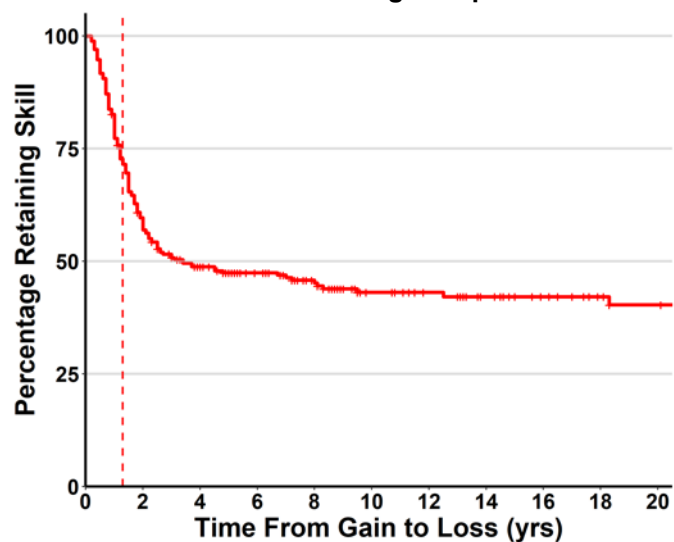
Hold Bottle



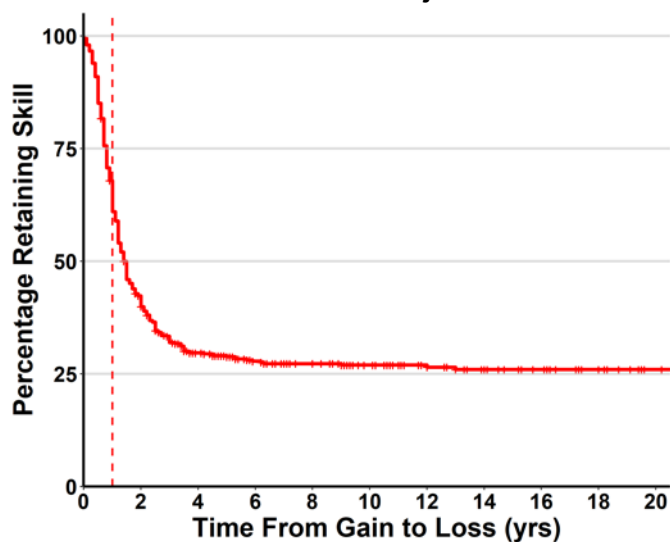
Reach For Toy



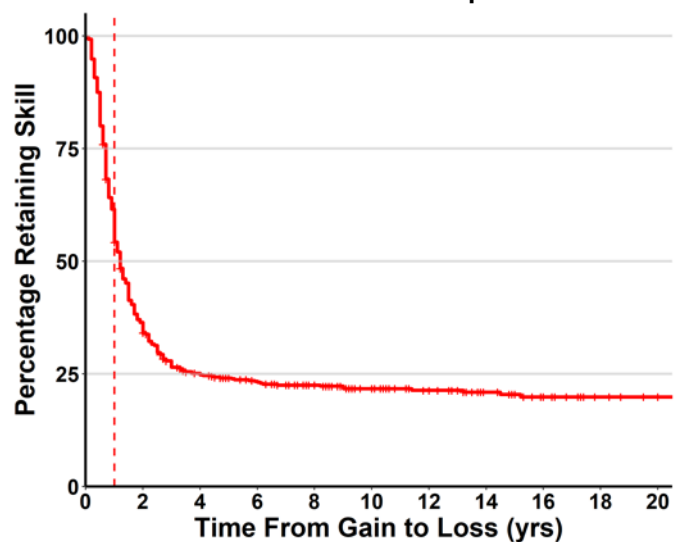
Raking Grasp



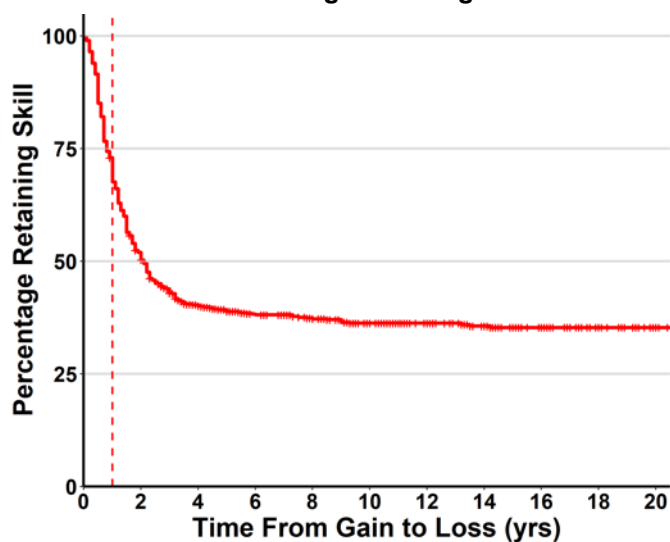
Transfer Objects



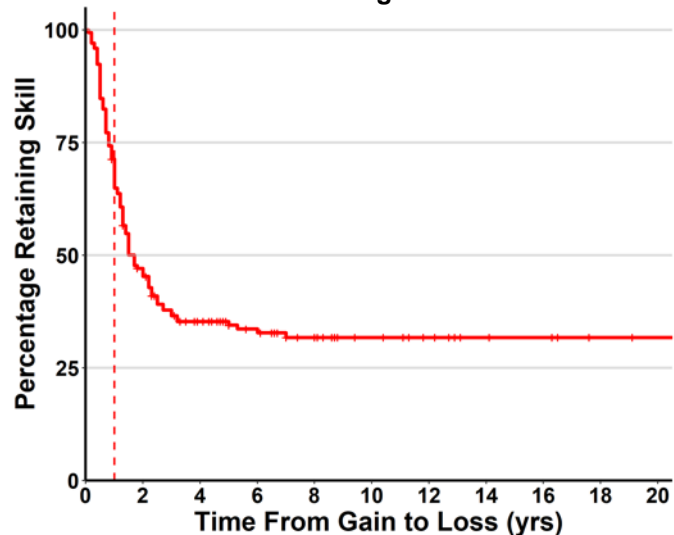
Pincer Grasp



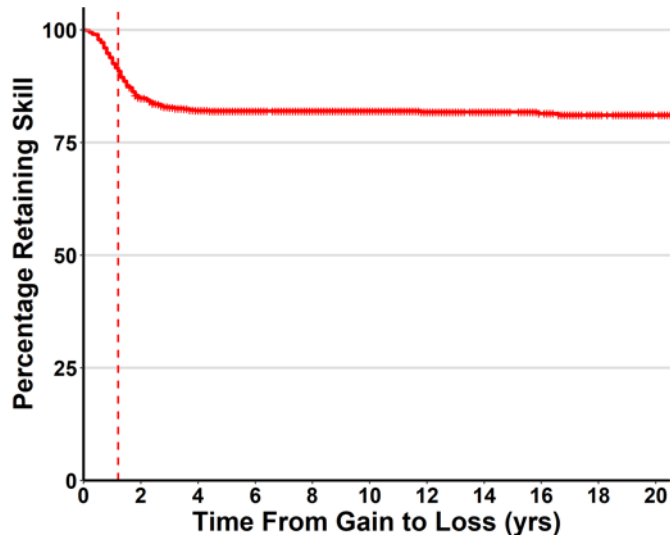
Finger Feeding



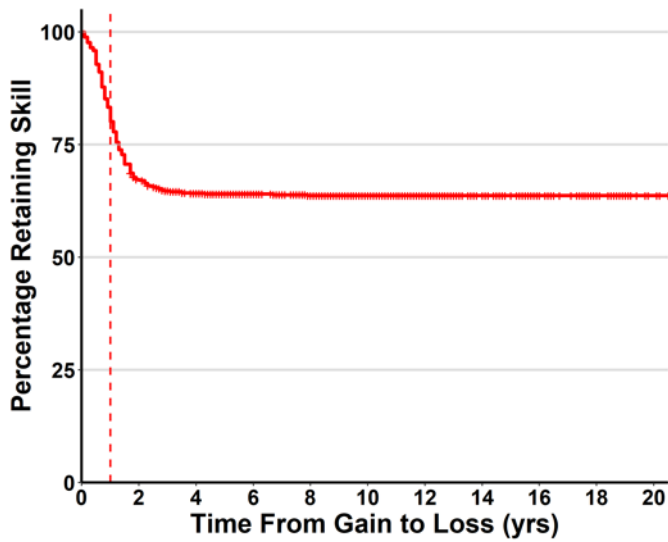
Turn Pages in Book



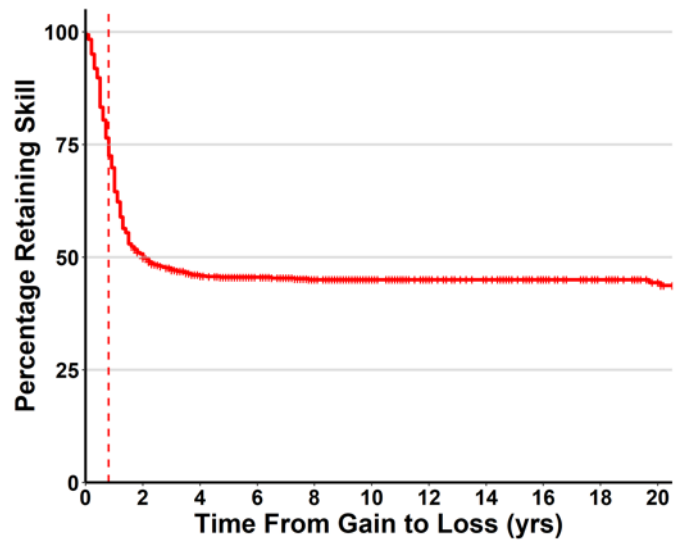
Social Smile



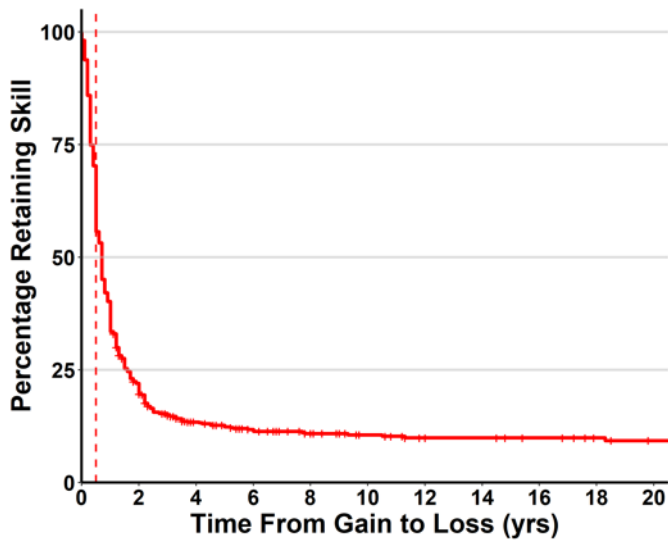
Cooing



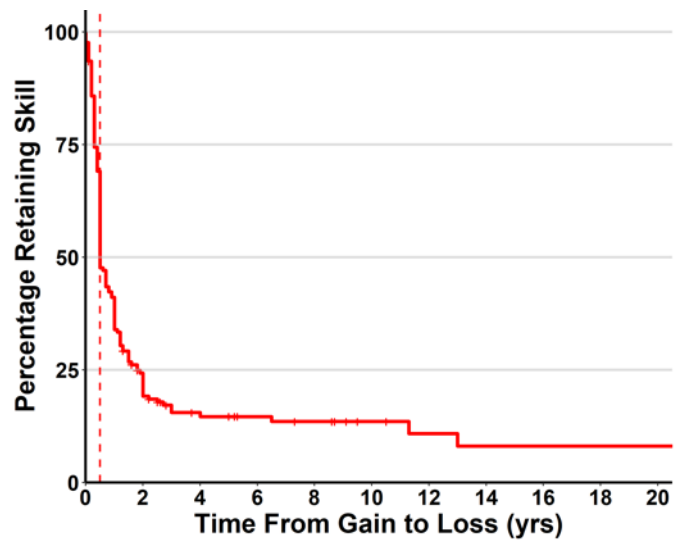
Babbling



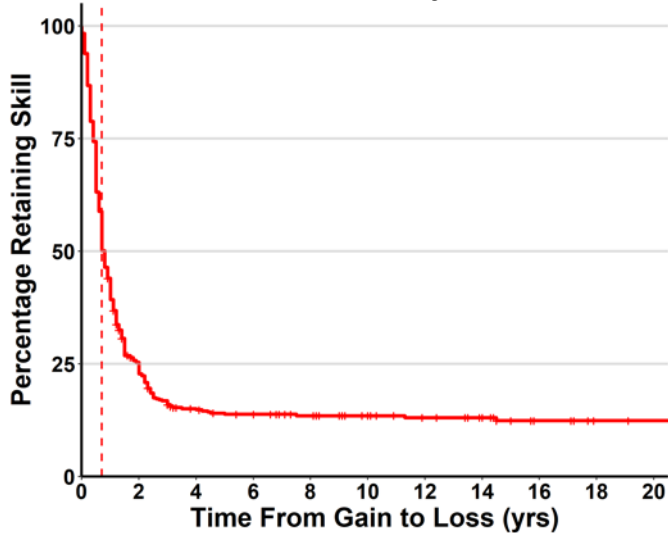
Words With Meaning



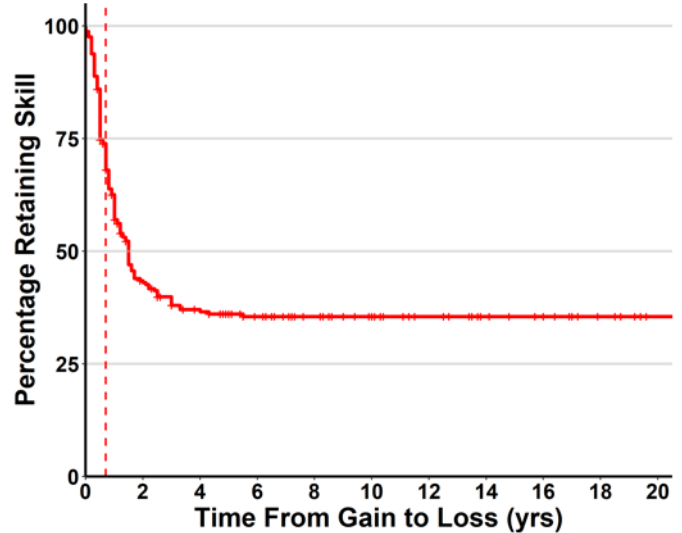
Spoken Phrases



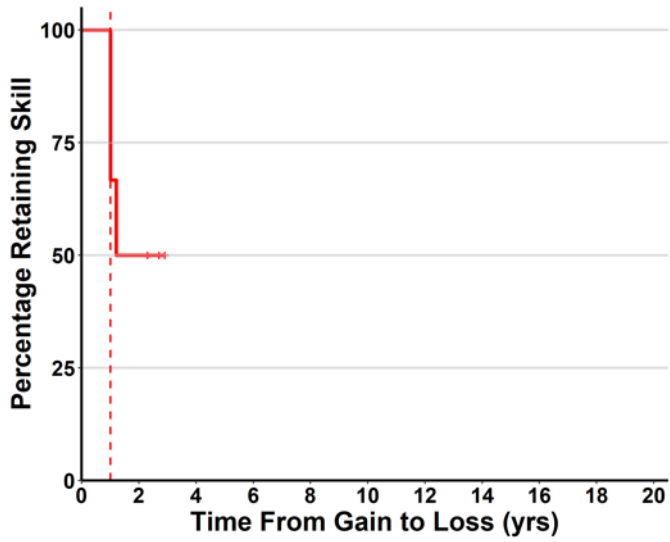
Wave Bye



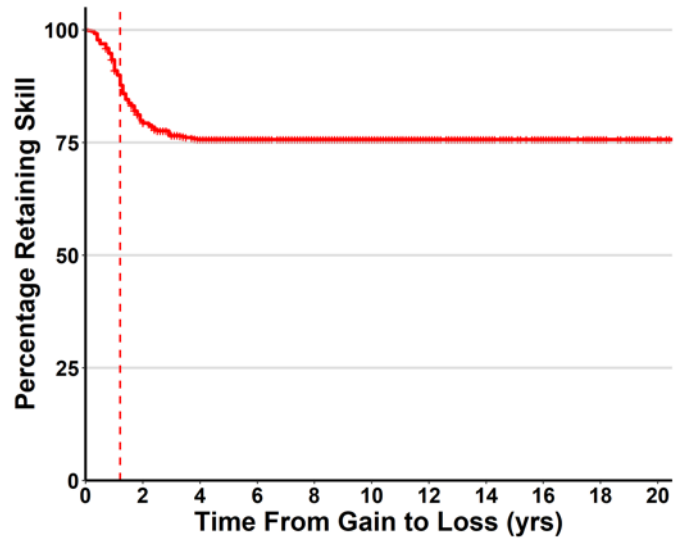
Points for Wants



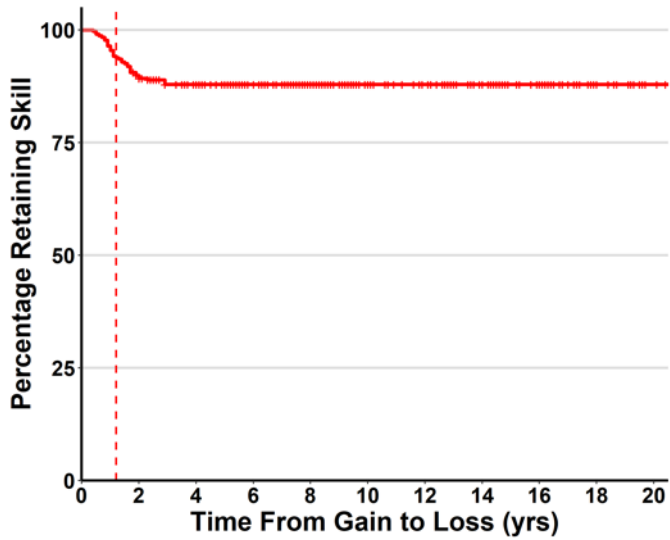
Shared Stories



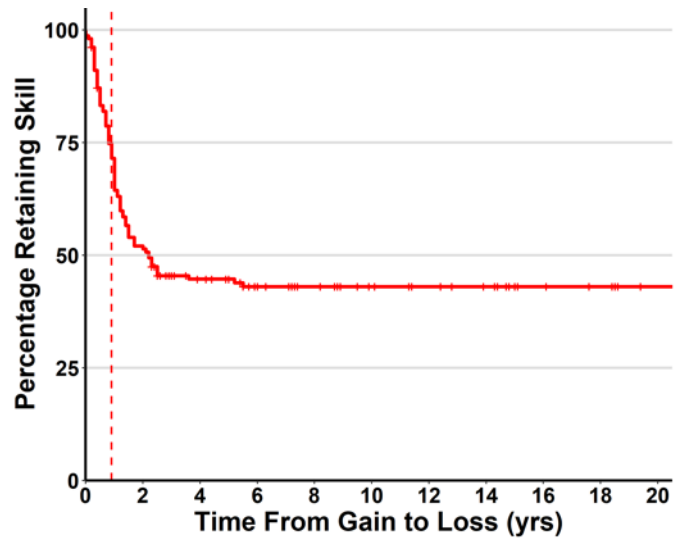
Quiet To Voice



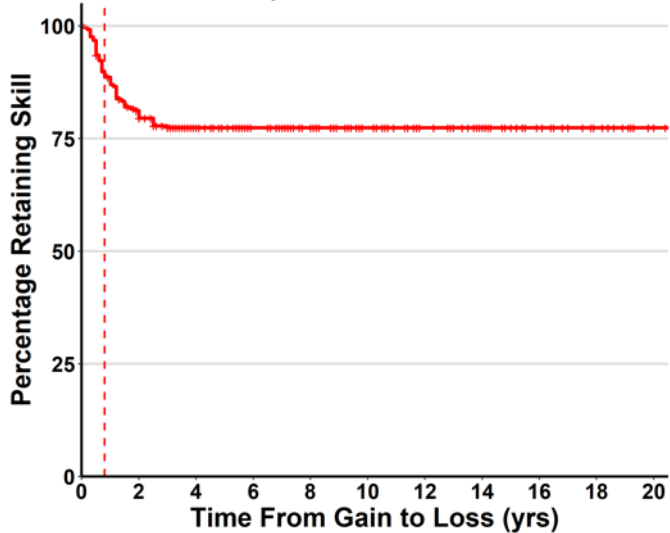
Respond To Sounds



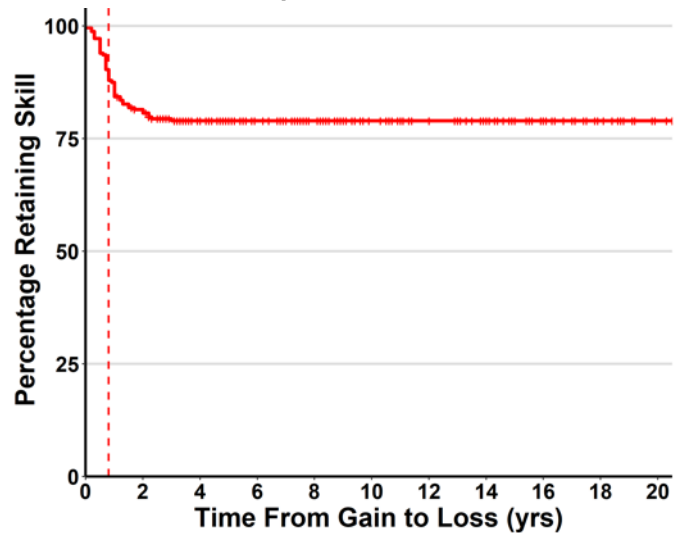
Play Peek-A-Boo



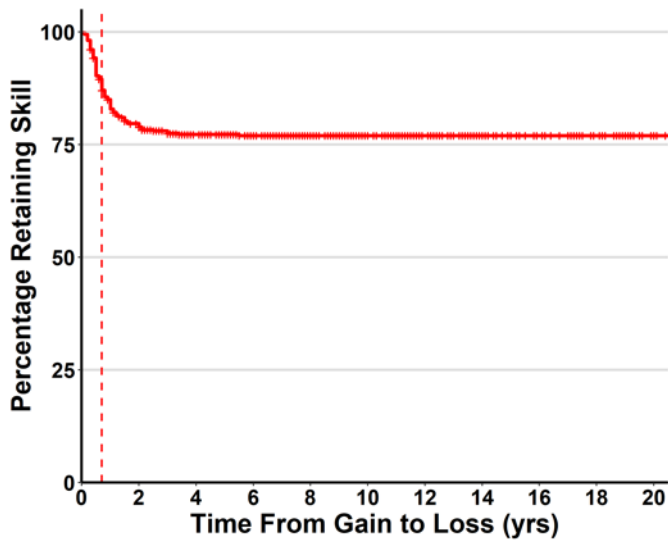
Respond To Familiar Words



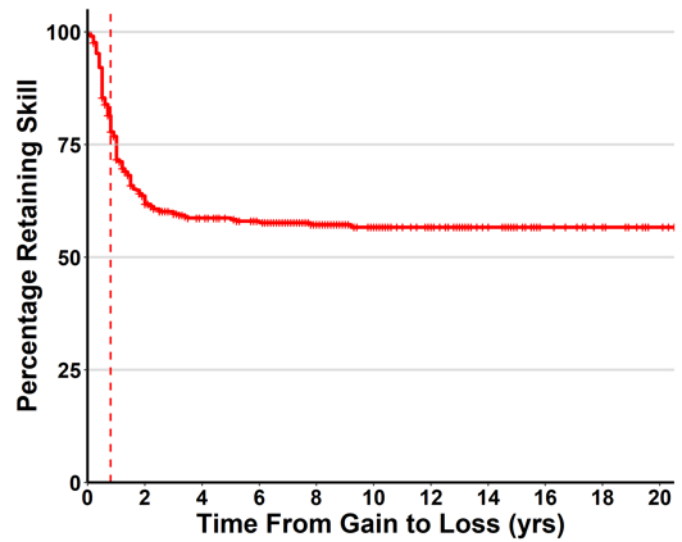
Respond To Own Name



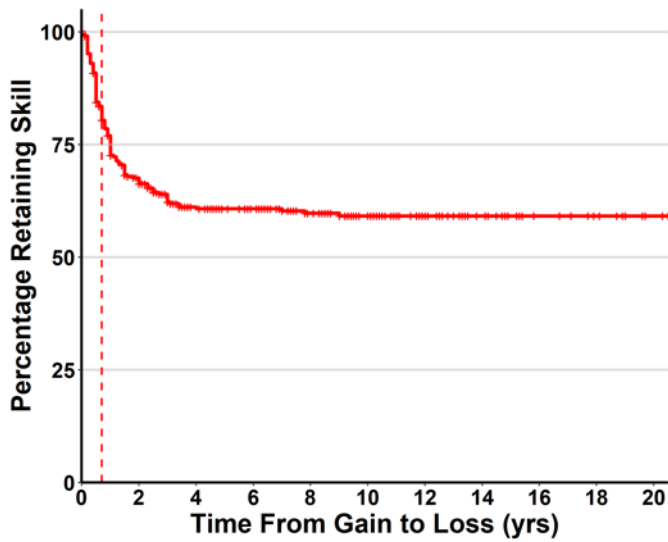
Inhibit To No



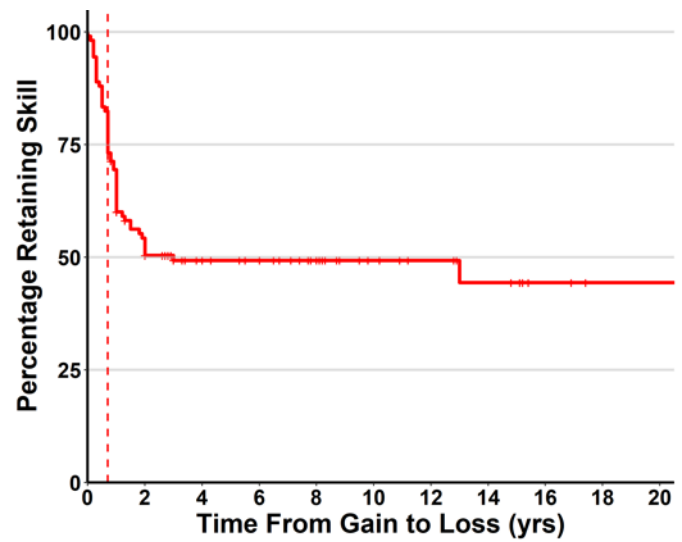
Follows Command With Gesture



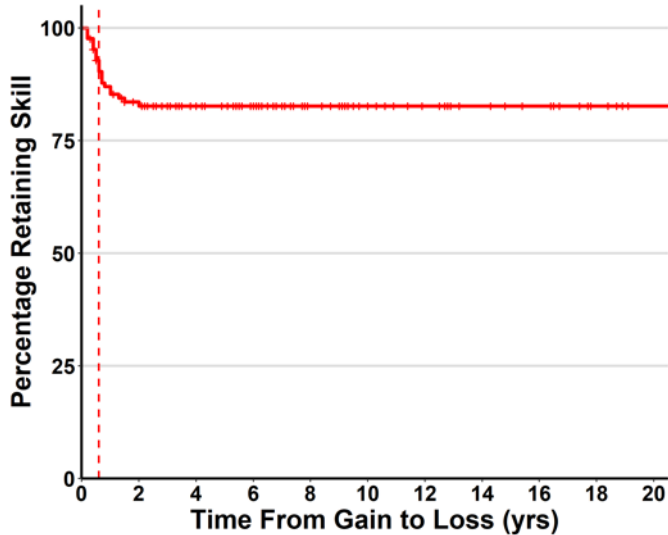
Follows Command Without Gesture



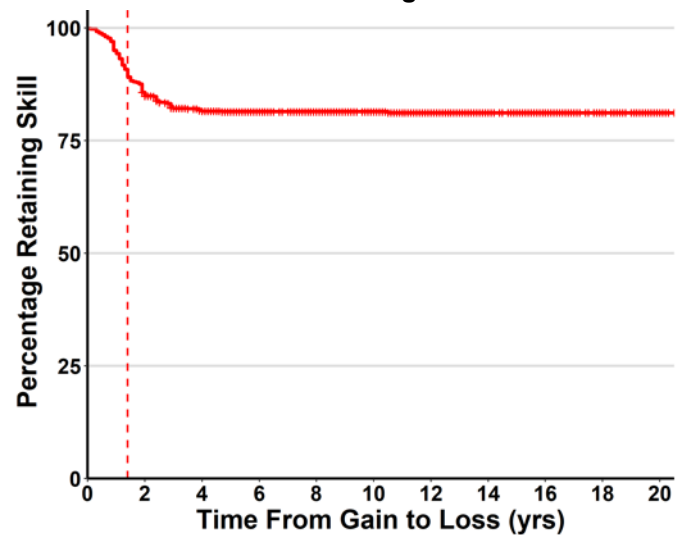
Identify Body Parts



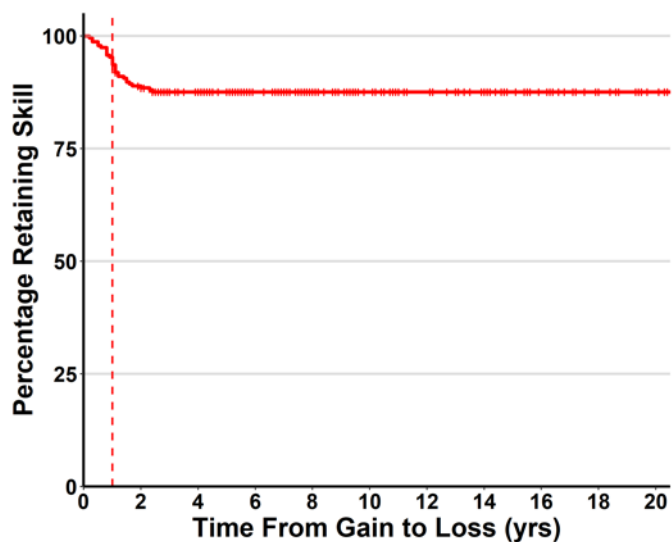
Point To 1 Color



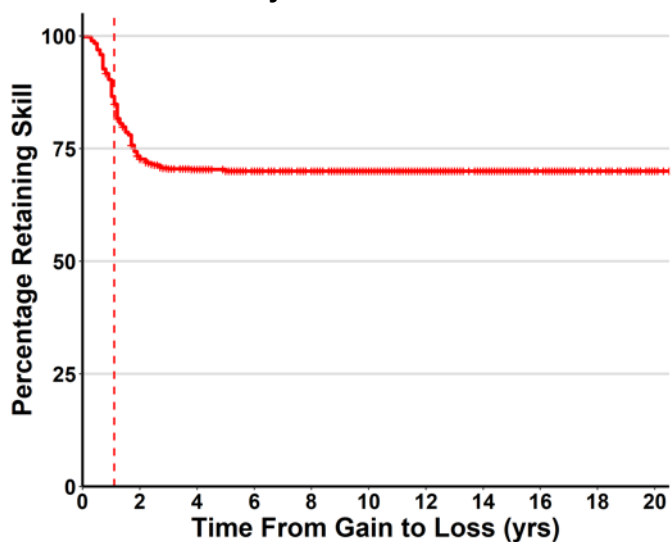
Like Being Held



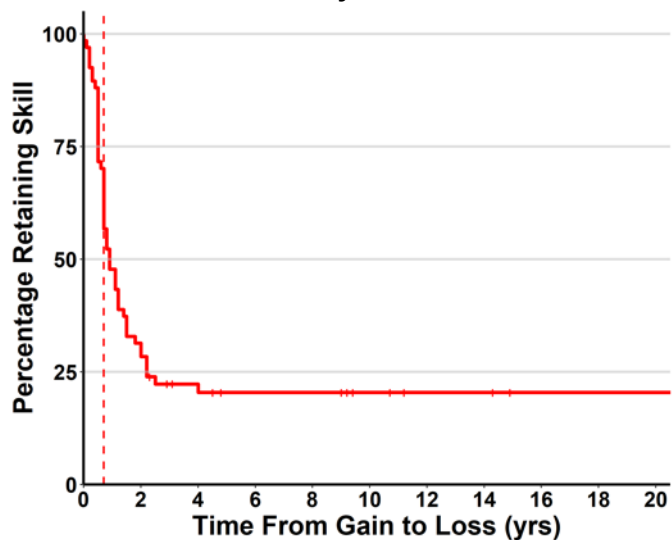
Attention To Loud Sounds



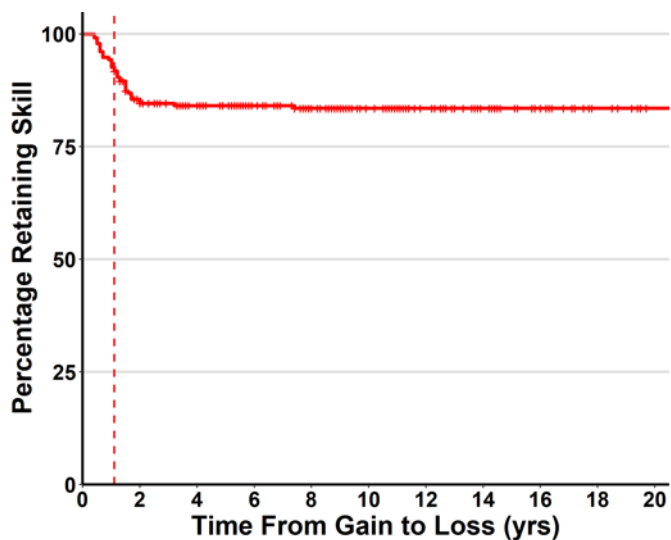
Eyes Fix and Follow



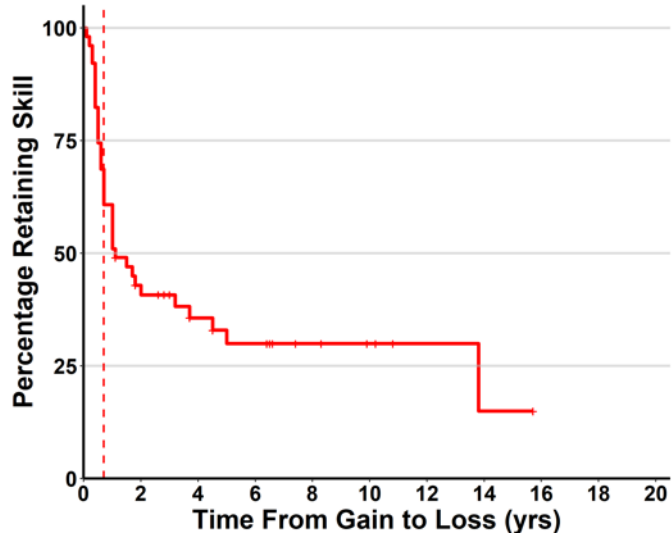
Play Pat-A-Cake



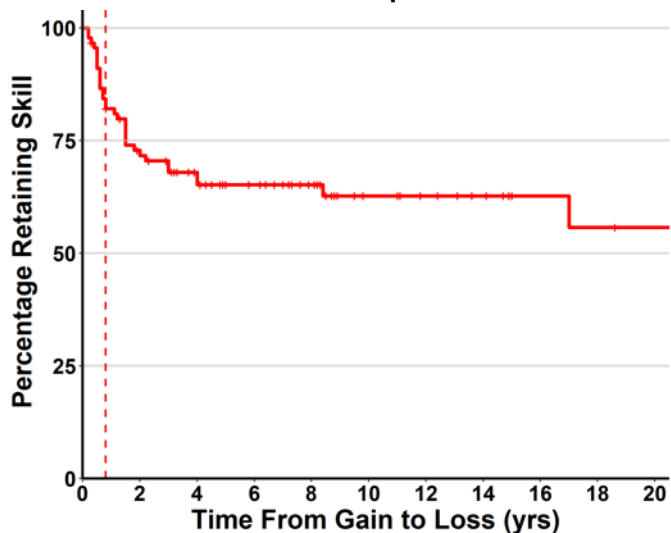
Desire Social Attention



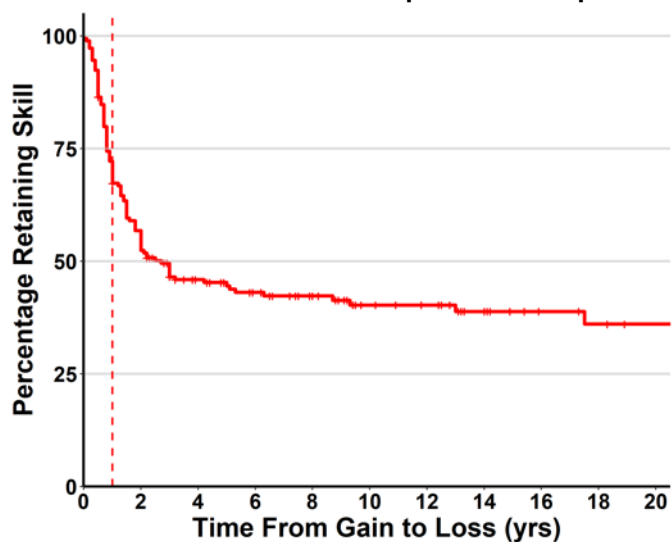
Imitate Peers



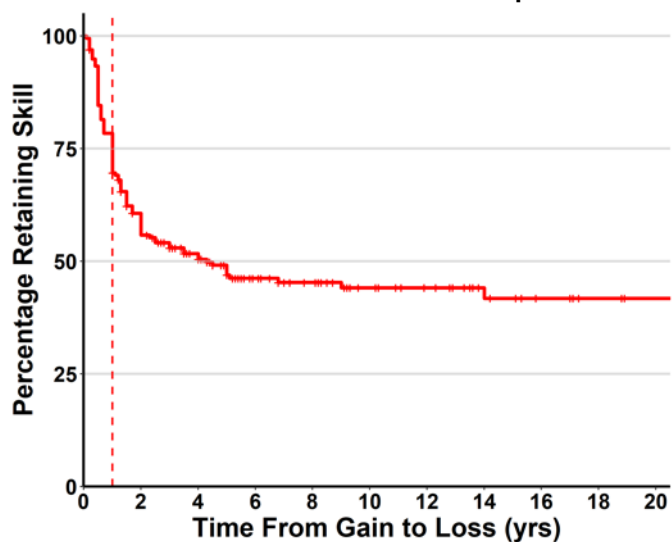
Been Independent



Drinks From Cup Without Help



Uses Utensils With Help



Uses Utensils Without Help

