

Supplementary Material

Figure 1

ERP results for facial visibility within the close and far distance range

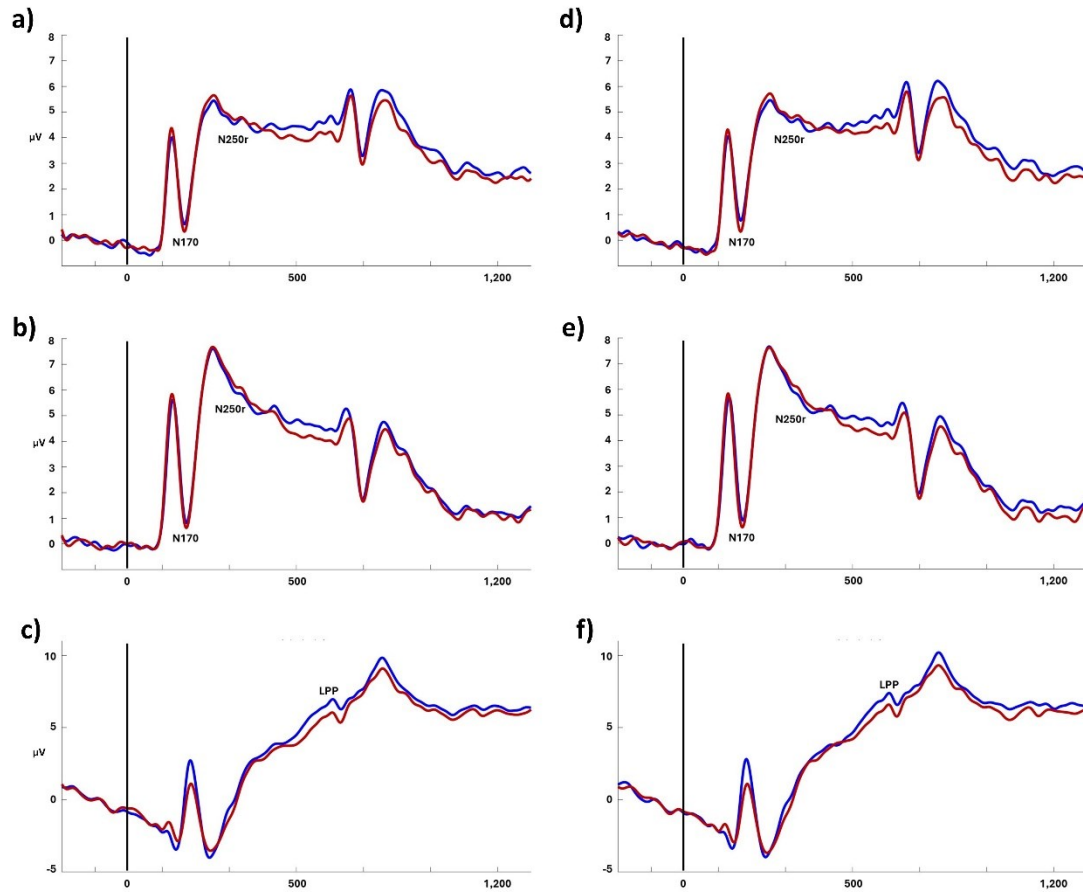


Figure 1. Grand average ERP waveforms for the N170, N250r and the LPP for high and low visibility within the close and far distance range. The left panel illustrates the N170 (a), N250r (b), and the LPP (c) for low (red) and high (blue) visibility within the close distance range. The right panel illustrates the N170 (d), N250r (e), and the LPP (f) for low (red) and high (blue) visibility within the far distance range. No statistically significant clusters between high versus low visibility were obtained within either distance range.