

Figure 2B - Original immunoblot images

Uncropped Western blot membranes used for Figure 2B. Bands corresponding to NMU and GAPDH are indicated. Red boxes denote regions shown in the main figure.

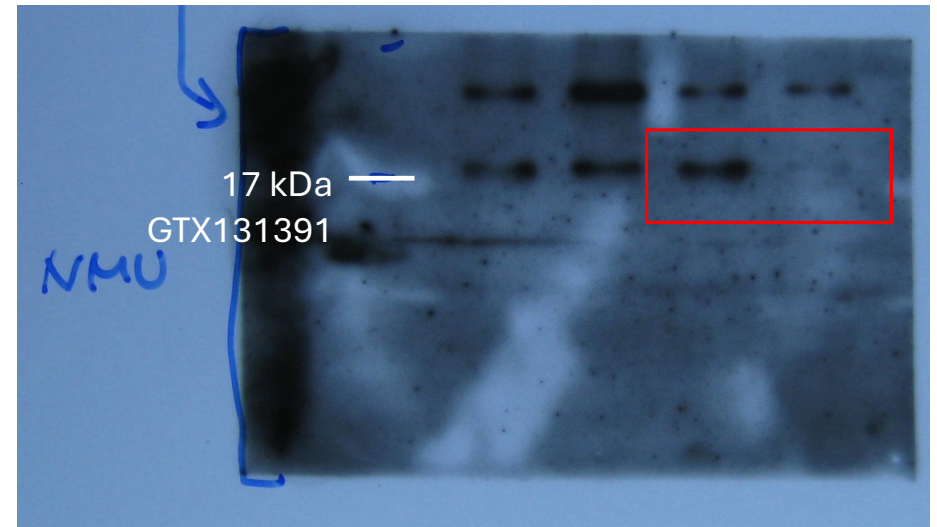
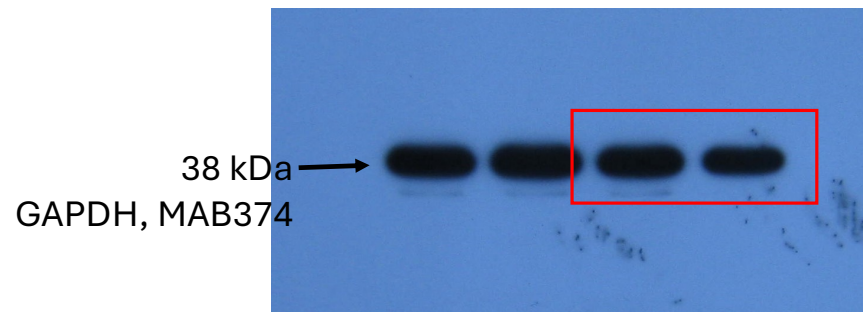


Figure 3B - Original immunoblot images

Uncropped Western blot membranes used for Figure 3B. Bands corresponding to DDK and GAPDH are indicated. Red boxes denote regions shown in the main figure.

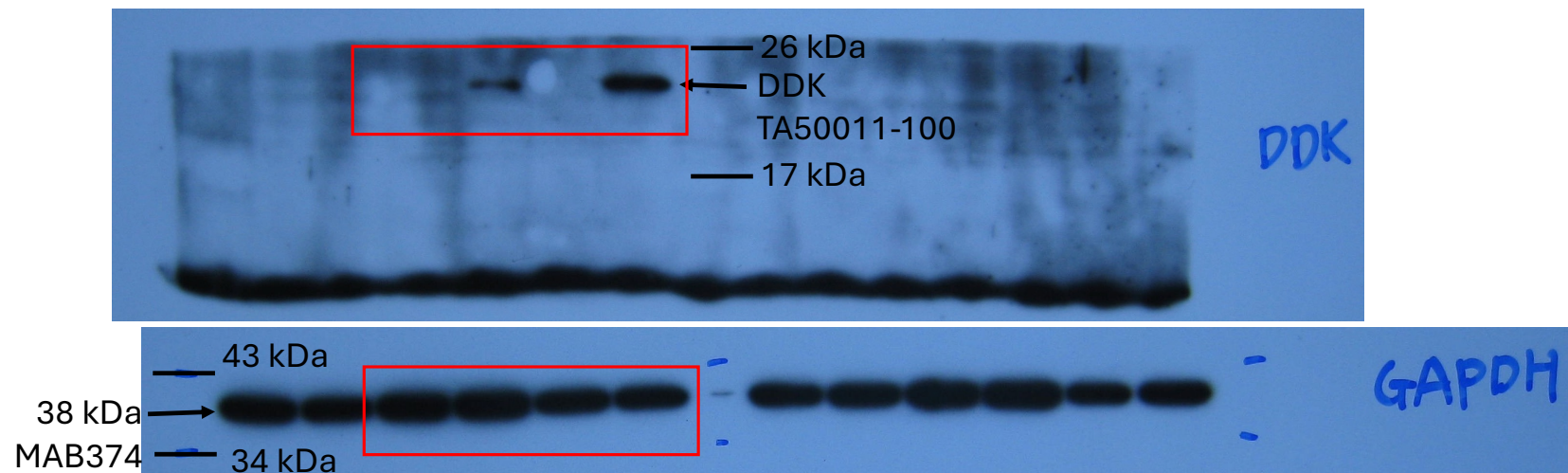


Figure 4L - Original immunoblot images

Uncropped Western blot membranes used for Figure 4L. Bands corresponding to pAKT-S473, pan AKT, IMPDH1, NMU and GAPDH are indicated. Red boxes denote regions shown in the main figure.

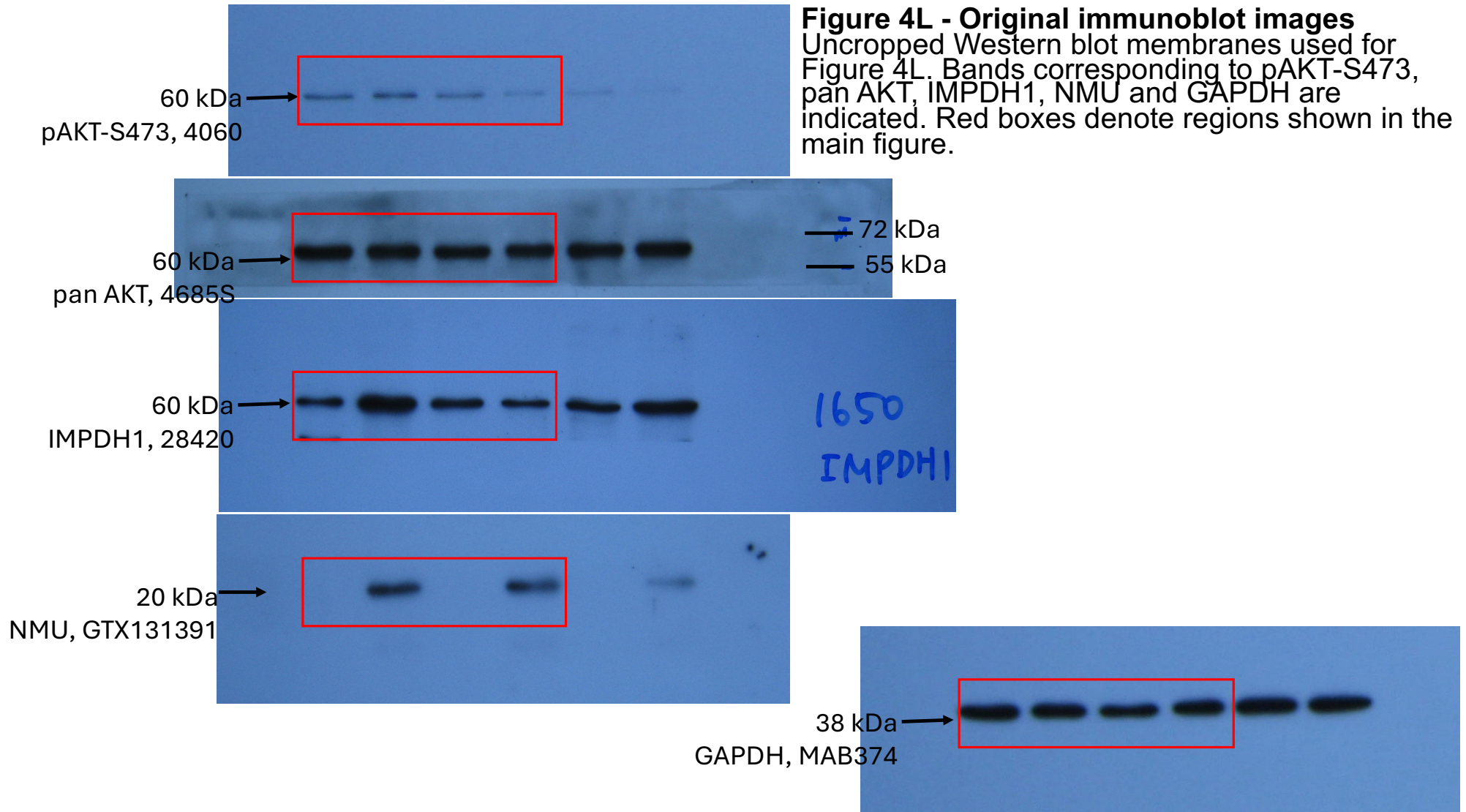


Figure S2A - Original immunoblot images

Uncropped Western blot membranes used for Figure 2A. Bands corresponding to NMU and GAPDH are indicated. Red boxes denote regions shown in the main figure.

