

Fig S1: Full Western blot images for Suv39h1 and Suv39h2 expression along with respective loading control (beta actin) in ovarian cancer cell lines. [a] Suv39h2 expression in ovarian cancer cell lines; [b] Suv39h1 expression in ovarian cancer cell lines; [c] beta actin

expression in ovarian cancer cell lines [Same blot was stripped and re-probed with another antibody for checking the expression of the proteins].

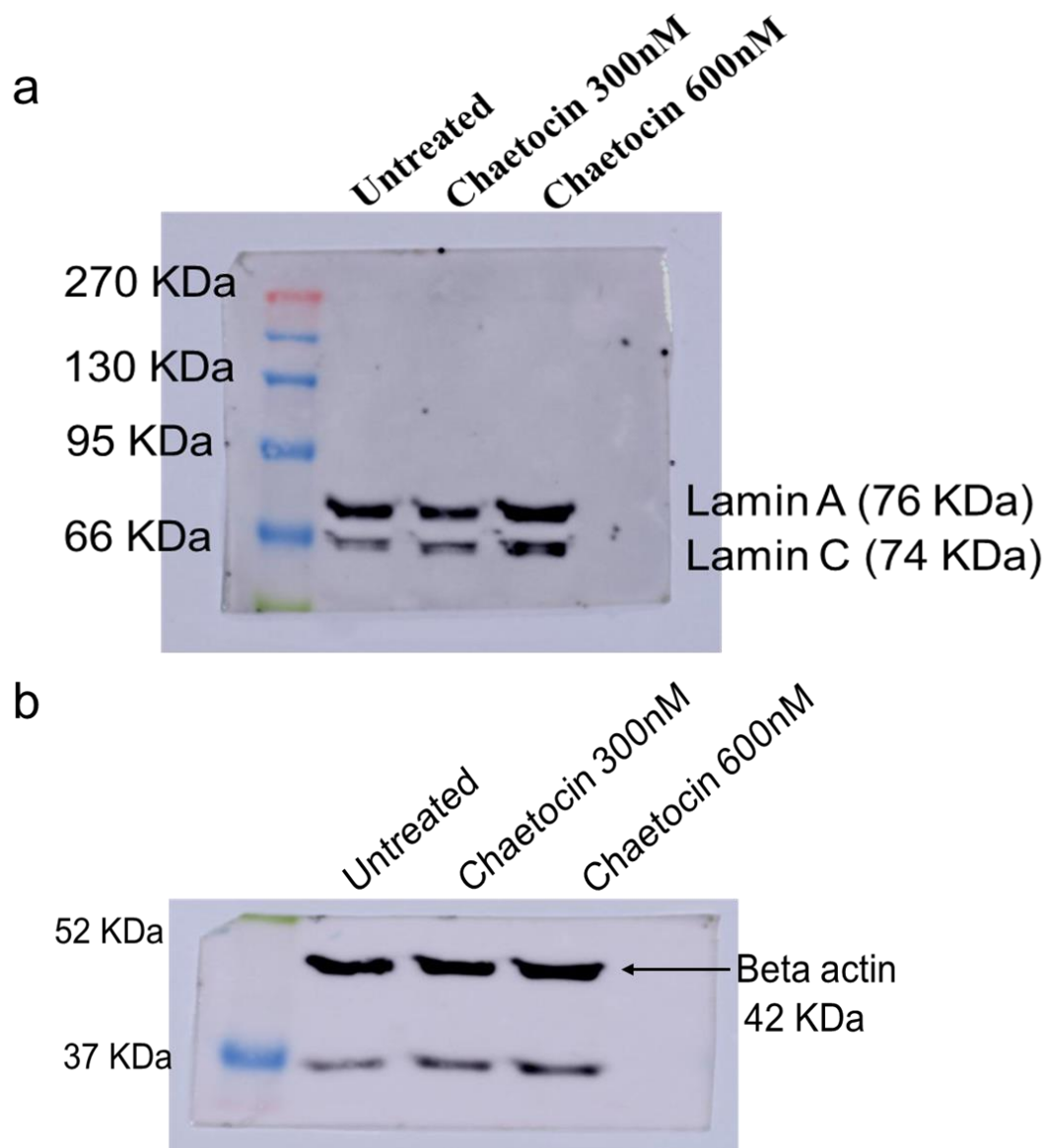


Fig S2: Uncropped western blot images for lamin A/C expression in chaetocin treated A2780 cell line. [a] lamin A/C expression in chaetocin treated A2780 cells; [b] Beta actin expression in chaetocin treated A2780 cell [Same blot was cut from molecular marker 52 KDa and the lower section of the blot was probed with Beta actin and the upper section of the blot was probed with lamin A/C antibody].