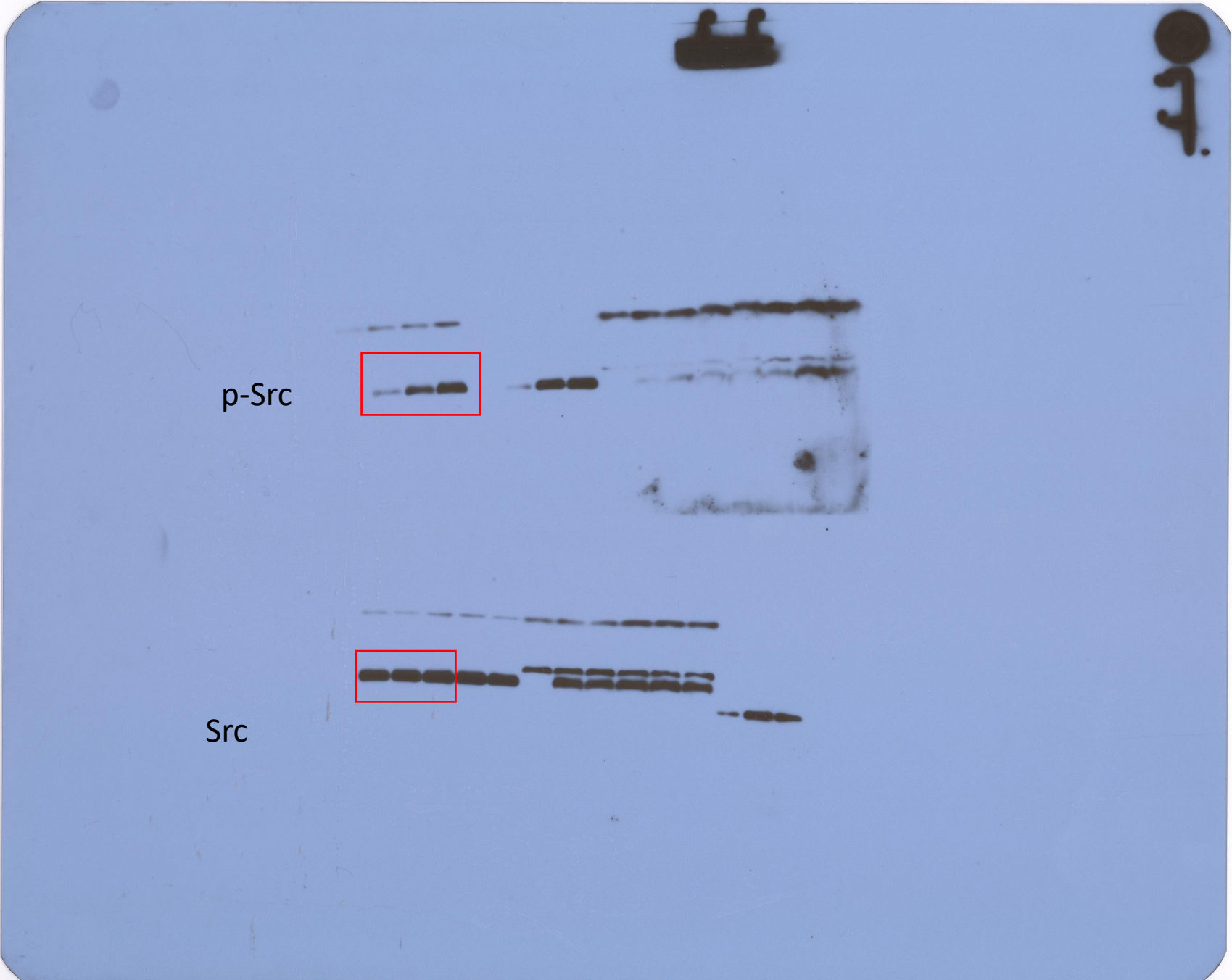


Unprocessed original images of gels and western blots

Fig. 2E



Western blot analysis of p65 and p-p65 in Jurkat cells. The blot shows two rows of bands. The top row is labeled 'p65' and the bottom row is labeled 'p-p65'. The p65 row shows four lanes with bands of varying intensity, with the first three lanes highlighted by a red box. The p-p65 row shows four lanes with bands of varying intensity, with the first three lanes highlighted by a red box. The fourth lane in both rows shows a single band, likely a control or a specific treatment. The p-p65 row shows a band at a higher molecular weight than the p65 row, indicating phosphorylation.

p-p65

p-p65



Fig. 2E



Fig. 3D

