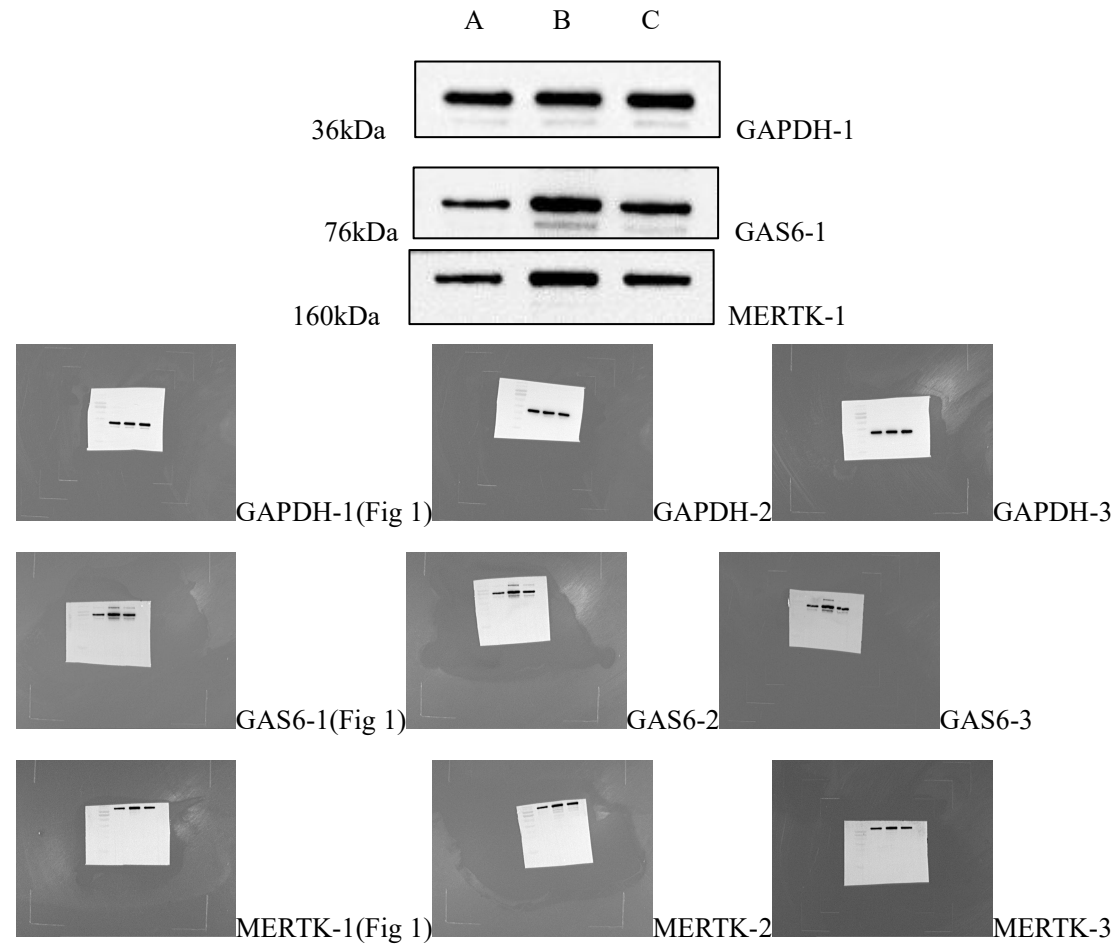


A	HC
B	RA Patients
C	RA+drug intervention group



Note: We indeed designed three experimental groups for this study: A (HC), B (RA Patients), and C (Drug intervention group). In Figure 4 of the article, we focused on elucidating the core mechanisms and thus only displayed the bands from groups A and B, which were directly used for comparing the fundamental mechanisms.