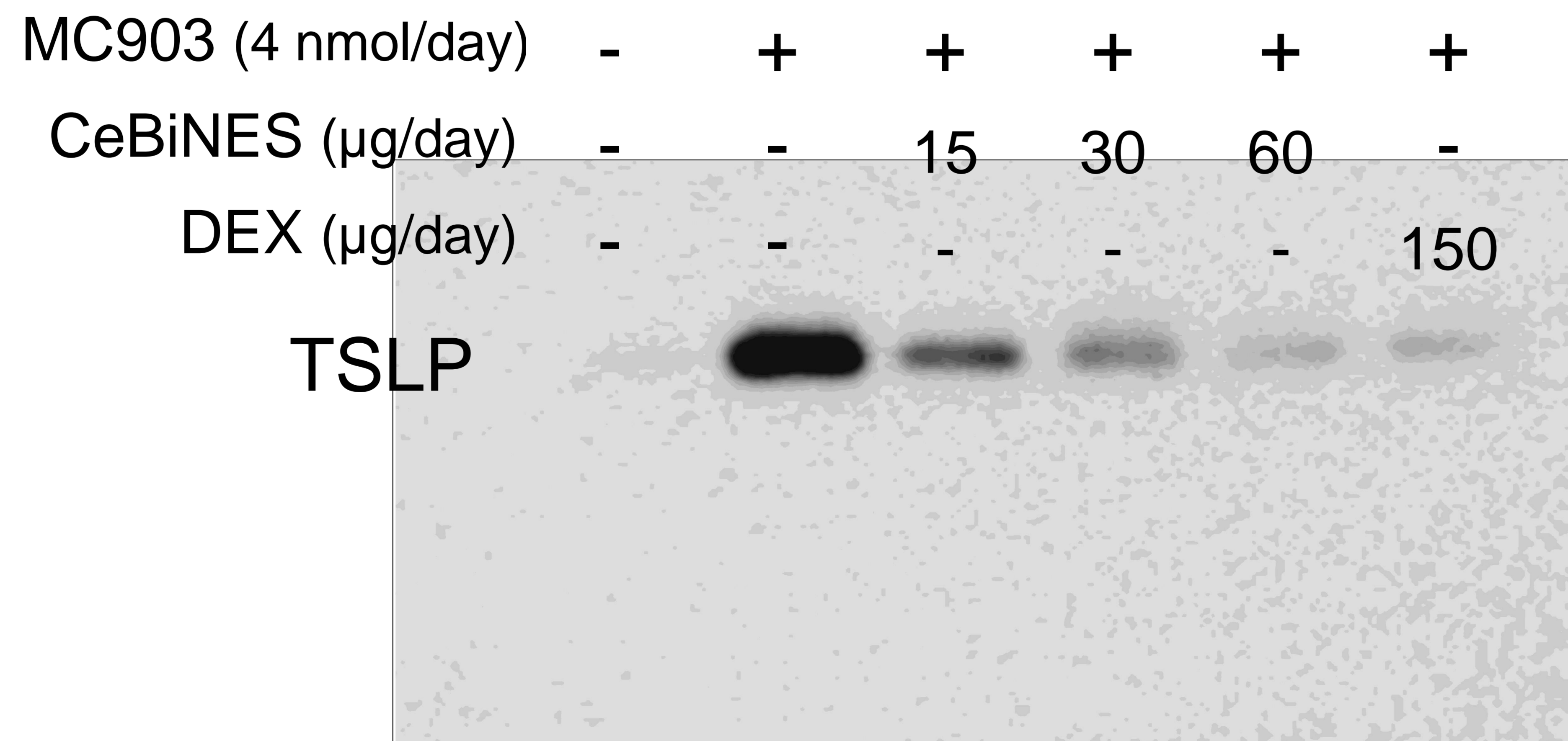
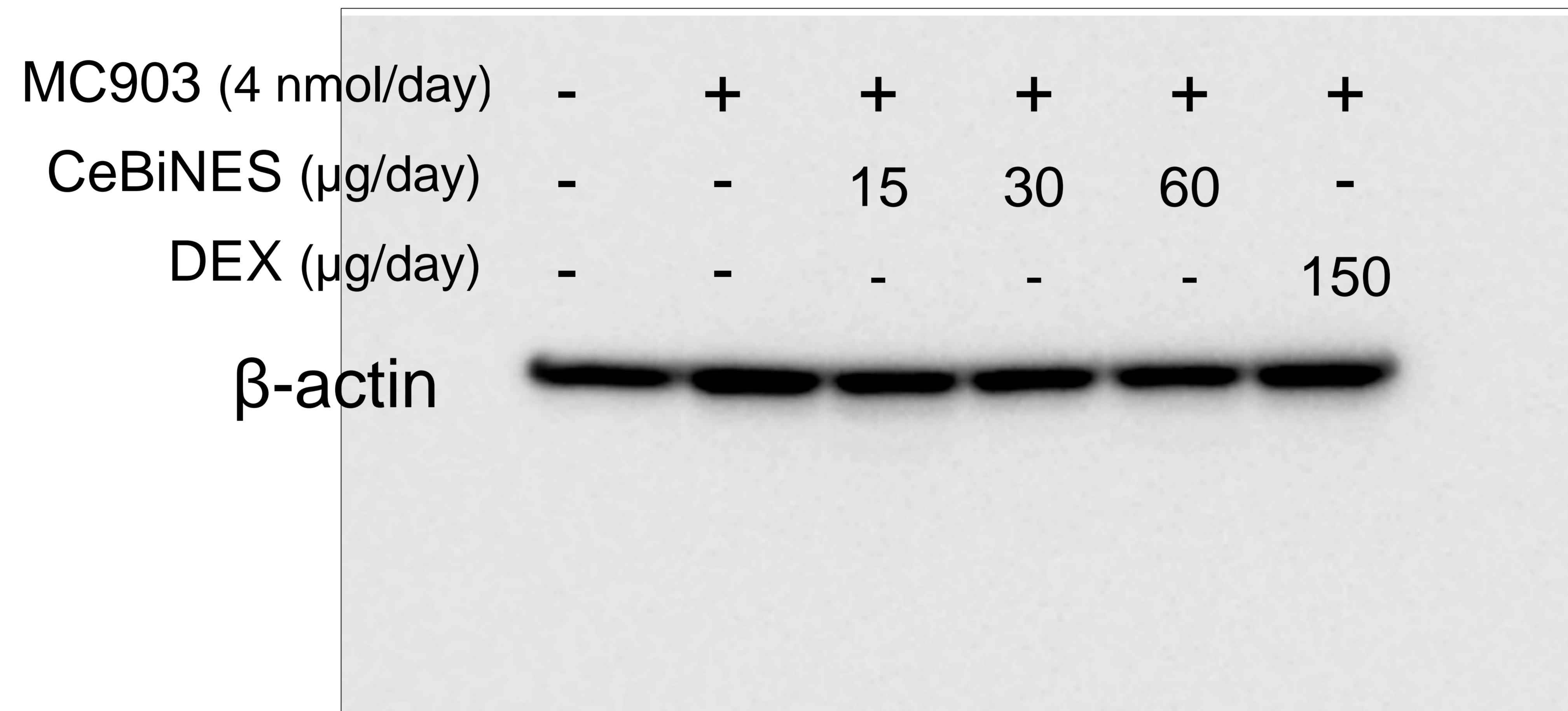


TSLP and β -actin



ERK and P-ERK

MC903 (4 nmol/day)	-	+	+	+	+	+
CeBiNES ($\mu\text{g/day}$)	-	-	15	30	60	-
DEX ($\mu\text{g/day}$)	-	-	-	-	-	150

P-ERK



MC903 (4 nmol/day)	-	+	+	+	+	+
CeBiNES ($\mu\text{g/day}$)	-	-	15	30	60	-
DEX ($\mu\text{g/day}$)	-	-	-	-	-	150

ERK



P38 and Pp38

MC903 (4 nmol/day)	-	+	+	+	+	+
CeBiNES ($\mu\text{g/day}$)	-	-	15	30	60	-
DEX ($\mu\text{g/day}$)	-	-	-	-	-	150

P-p38



MC903 (4 nmol/day)	-	+	+	+	+	+
CeBiNES ($\mu\text{g/day}$)	-	-	15	30	60	-
DEX ($\mu\text{g/day}$)	-	-	-	-	-	150

p38



Fig. JNK, PJNK and b-actin

