

Figure 2: Agarose gel electrophoresis of PCR products showing amplification of a 775 bp of EAE. Lane 1 represents the DNA ladder (100bp). Lanes 2, 3, and 4 correspond to the tested samples, all showing bands at approximately 775 bp, indicating successful amplification of EAE. Lane 5 is the negative control, showing no detectable band. Lane 6 is the positive control, validating the PCR reaction.

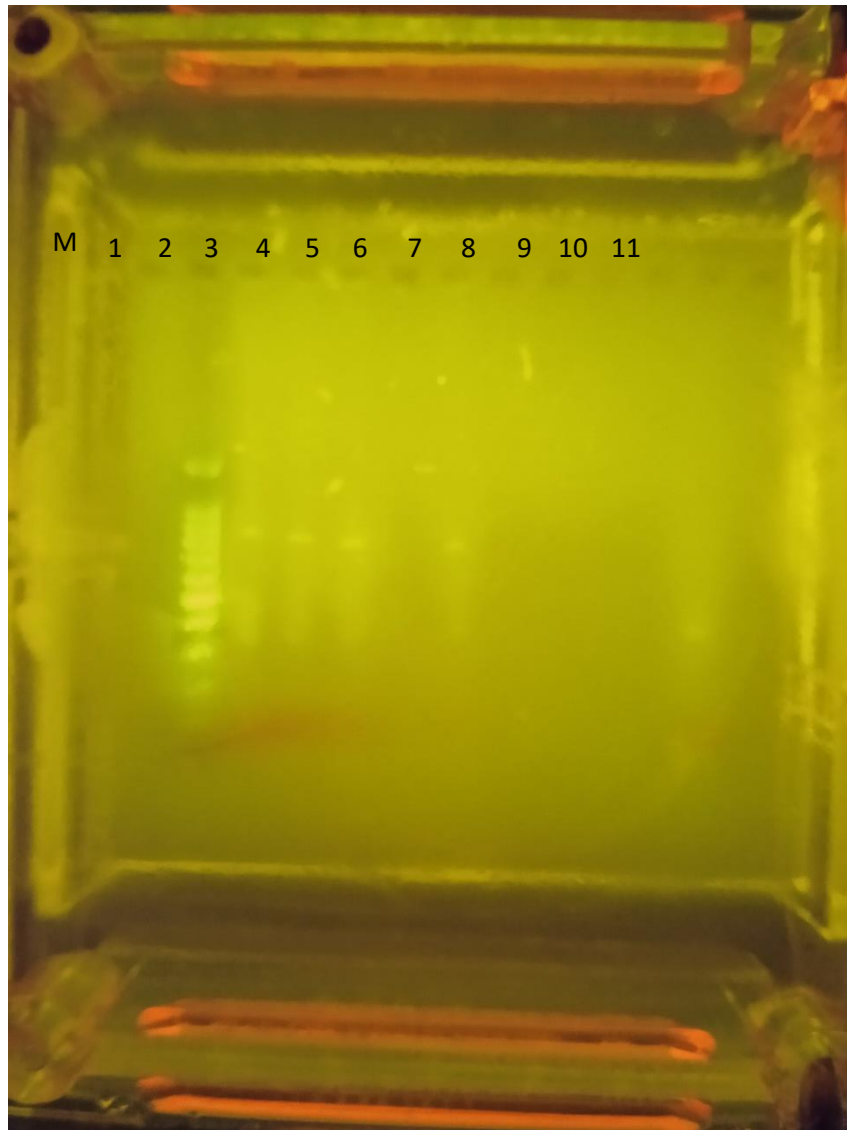


Figure 3: PCR amplification showing a 630 bp of EAEC product in samples (lanes 2–3) and positive control (lane 5); no band observed in the negative control (lane 4), and a 100bp ladder (lane 1).

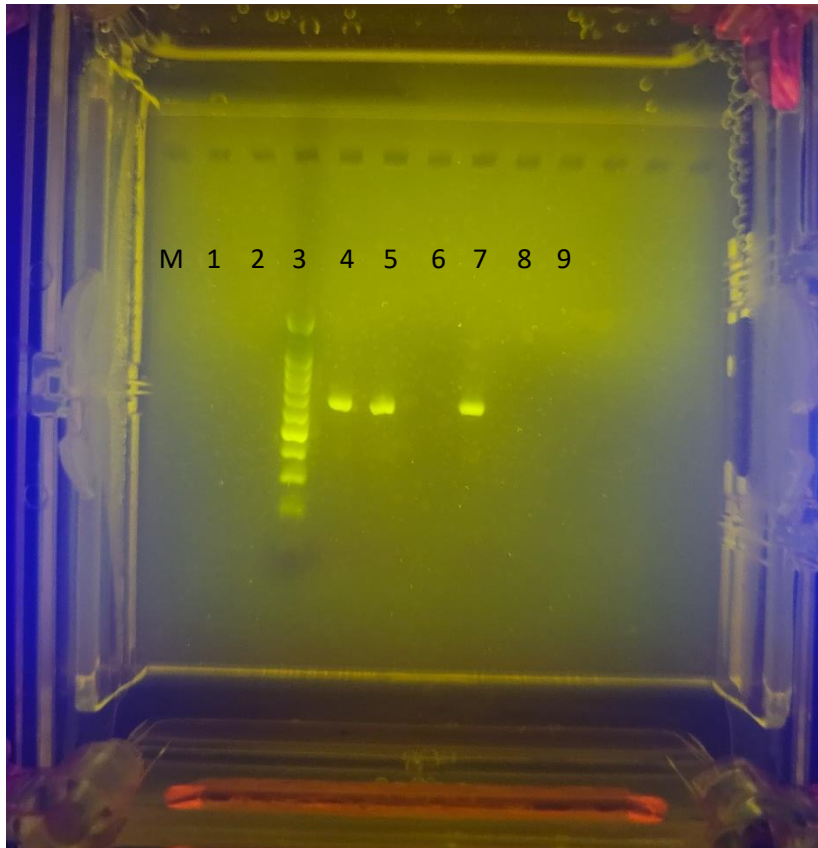


Figure 4: PCR amplification showing a 620 bp of EI product in samples (lanes 2–3) and positive control (lane 5); no band observed in the negative control (lane 4); 100bp ladder (lane 1).

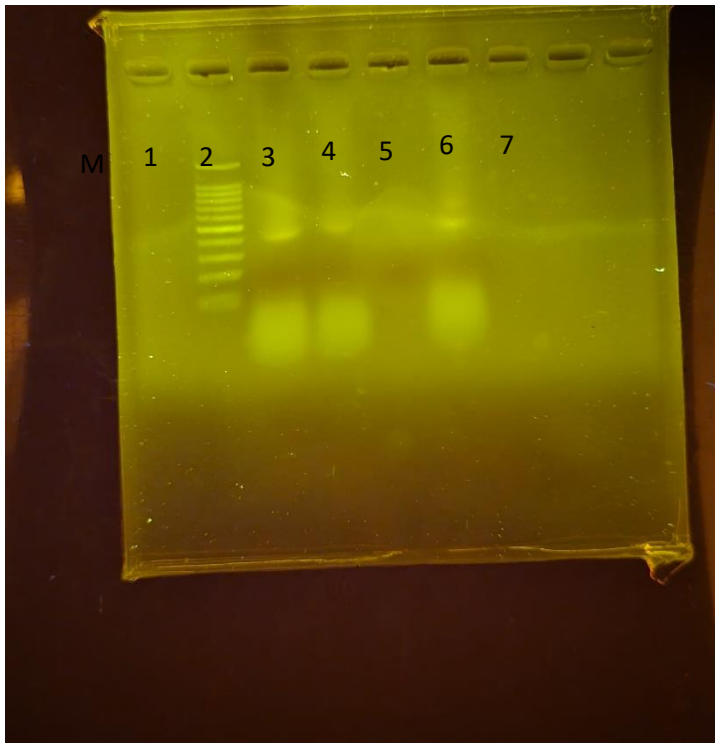


Figure 5: PCR amplification showing a 348bp of VT2 product in samples (lanes 2–5) and positive control (lane 7); no band observed in the negative control (lane 6); and a 100bp ladder (lane 1).

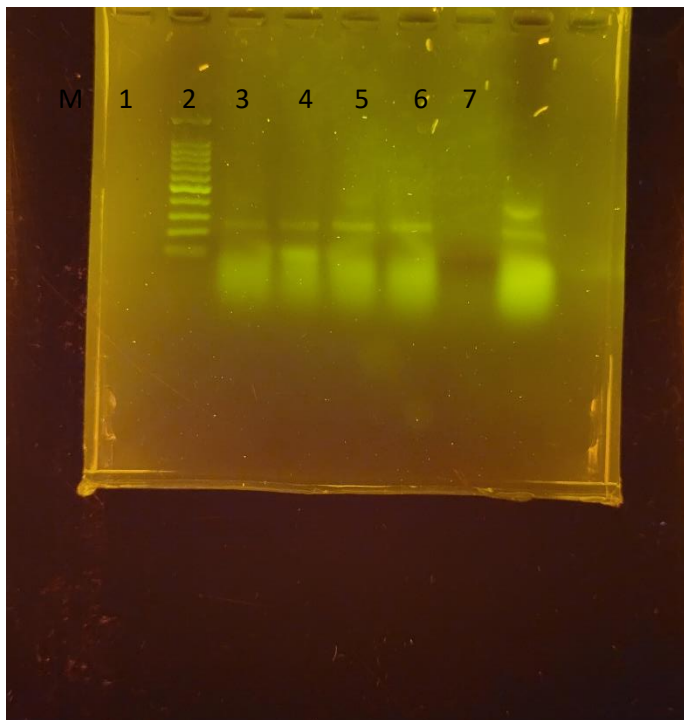


Figure 6: PCR amplification showing a 131bp of VT1 product in samples (lanes 2–5) and positive control (lane 7); no band observed in the negative control (lane 6). Lane 1 shows a 100bp ladder.

