

Figure (2): Analysis of PCR products of human blood samples by 1.5% agarose gel electrophoresis. A 1200 bp DNA fragment of the microsporidia DNA gene was amplified using primers C1 and C2. Lane L (DNA marker ladder). Lane NC negative control, PC positive control. Lane 1, 2, 3, 4, 5, 6, and 7 negatives for microsporidia.

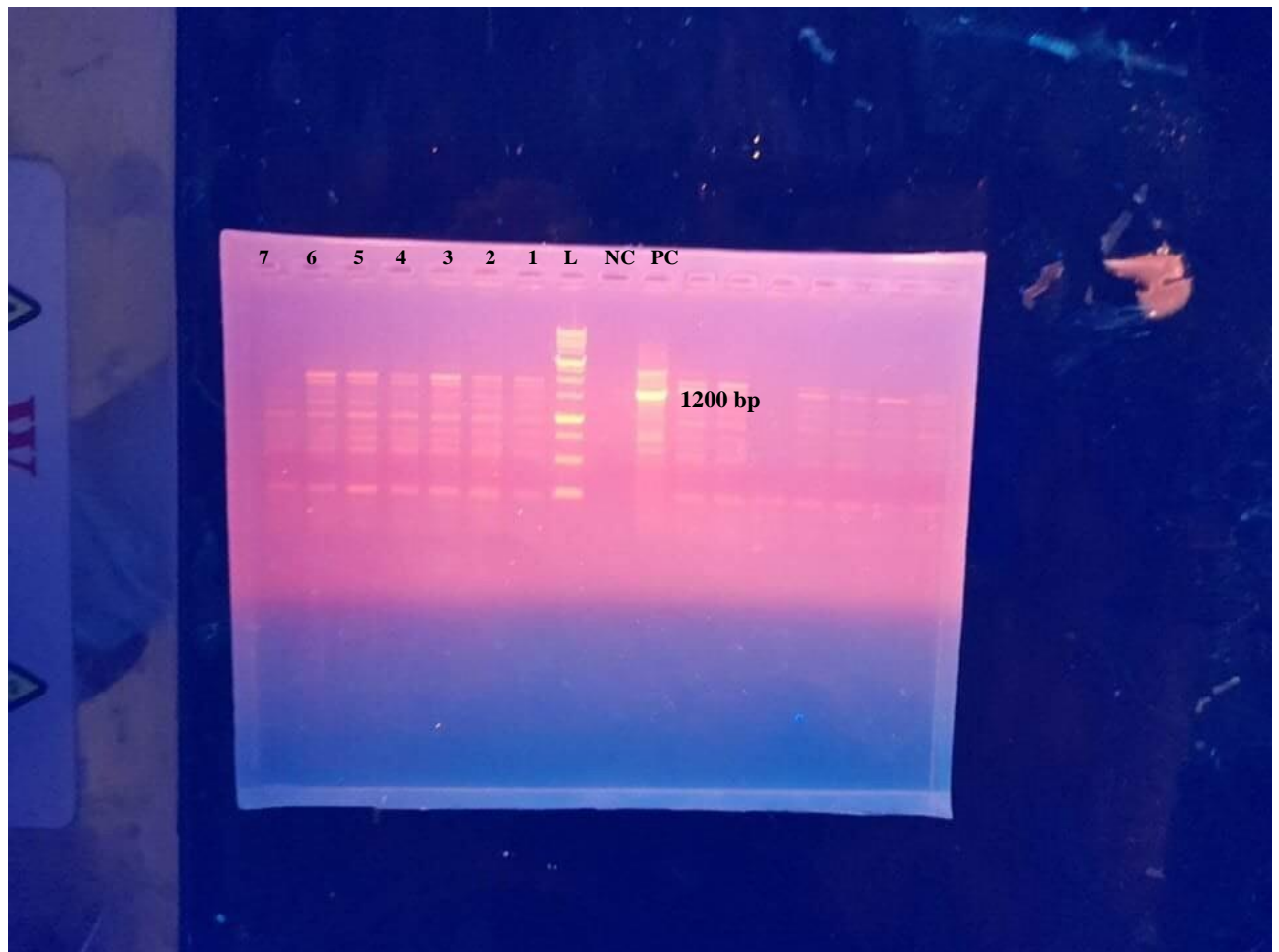


Figure (2): Analysis of PCR products of human blood samples by 1.5% agarose gel electrophoresis. A 1200 bp DNA fragment of the microsporidia DNA gene was amplified using primers C1 and C2. Lane L (DNA marker ladder). Lane NC negative control, PC positive control. Lane 1, 2, 3, 4, 5, 6, and 7 negatives for microsporidia.

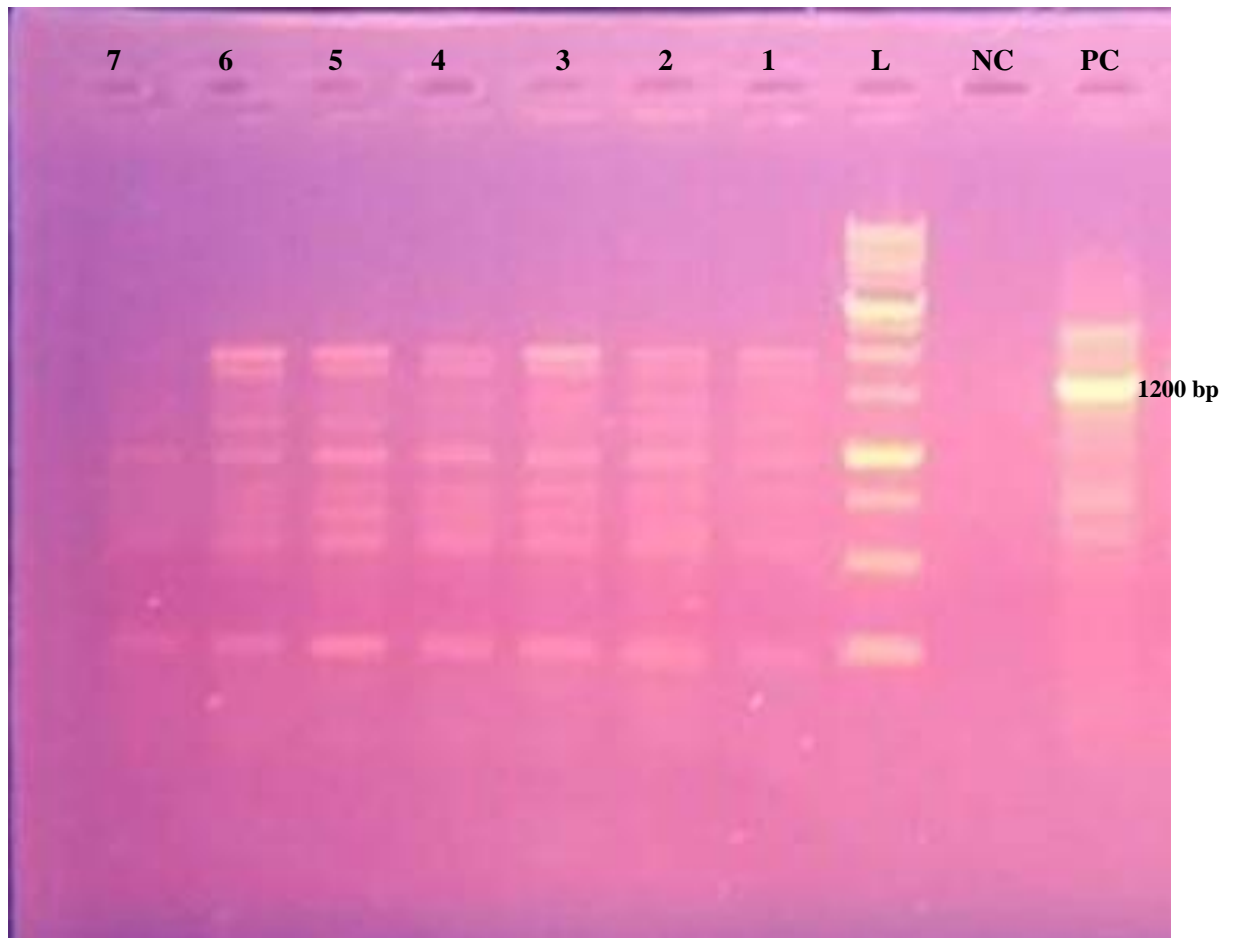


Figure (2): Analysis of PCR products of human blood samples by 1.5% agarose gel electrophoresis. A 1200 bp DNA fragment of the microsporidia DNA gene was amplified using primers C1 and C2. Lane L (DNA marker ladder). Lane NC negative control, PC positive control. Lane 1, 2, 3, 4, 5, 6, and 7 negatives for microsporidia.

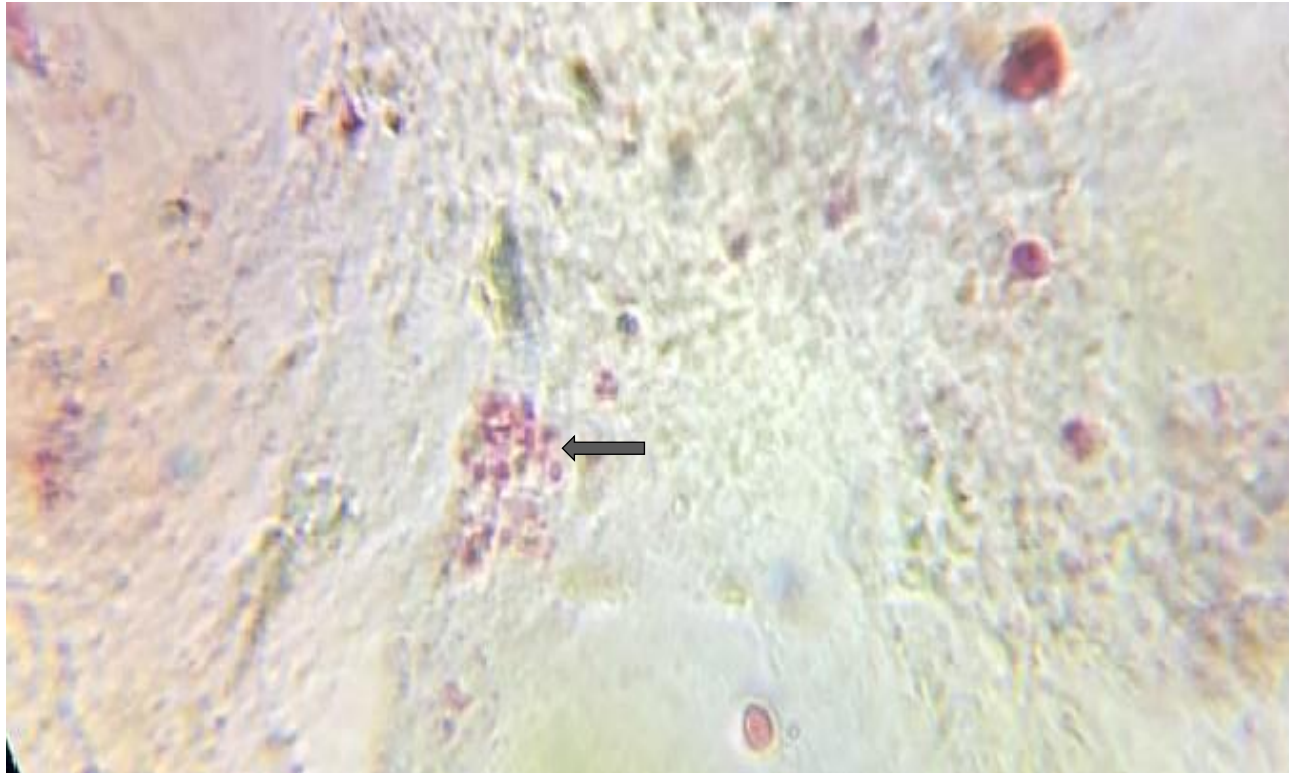


Figure 1. Spores of microsporidia in a stool smear stained with MTS, viewed under a light microscope using the oil immersion lens (1000×).