

**Additional Figures for Tumor microenvironment changes after treatment with
avelumab and immune-stimulating agent combinations in patients with
advanced solid tumors**

Nejla Ozirmak Lermi^{1*}, Mohamed A Gouda^{2,3*}, Jibran Ahmed⁴, Xianli Jiang¹, Younghee Lee⁵, Vakul Mohanty¹, Mohamed Derbala², Bettzy Stephen², Anuja Jhingran⁶, Mohammad Moustafa Mohammad⁷, Donghyun Joo⁵, Alejandro Francisco-Cruz⁵, Honglei Chen⁵, Luis Acosta Calderon⁵, Caddie Laberiano⁵, Claudio Arrechedera⁵, Renganayaki Pandurengan⁵, Serdar Gurses², Yali Yang², Luisa M. Solis Soto⁵, Jordi Rodon Ahnert², Ken Chen¹, Funda Meric-Bernstam², Eugene Jon Koay⁸, Milind Javle⁹, Cara Haymaker^{5#}, Aung Naing^{2#}.

*Authors contributed equally.

#Corresponding authors: C.H. E-mail: chaymaker@mdanderson.org

A.N. E-mail: anaing@mdanderson.org

The PDF file includes:

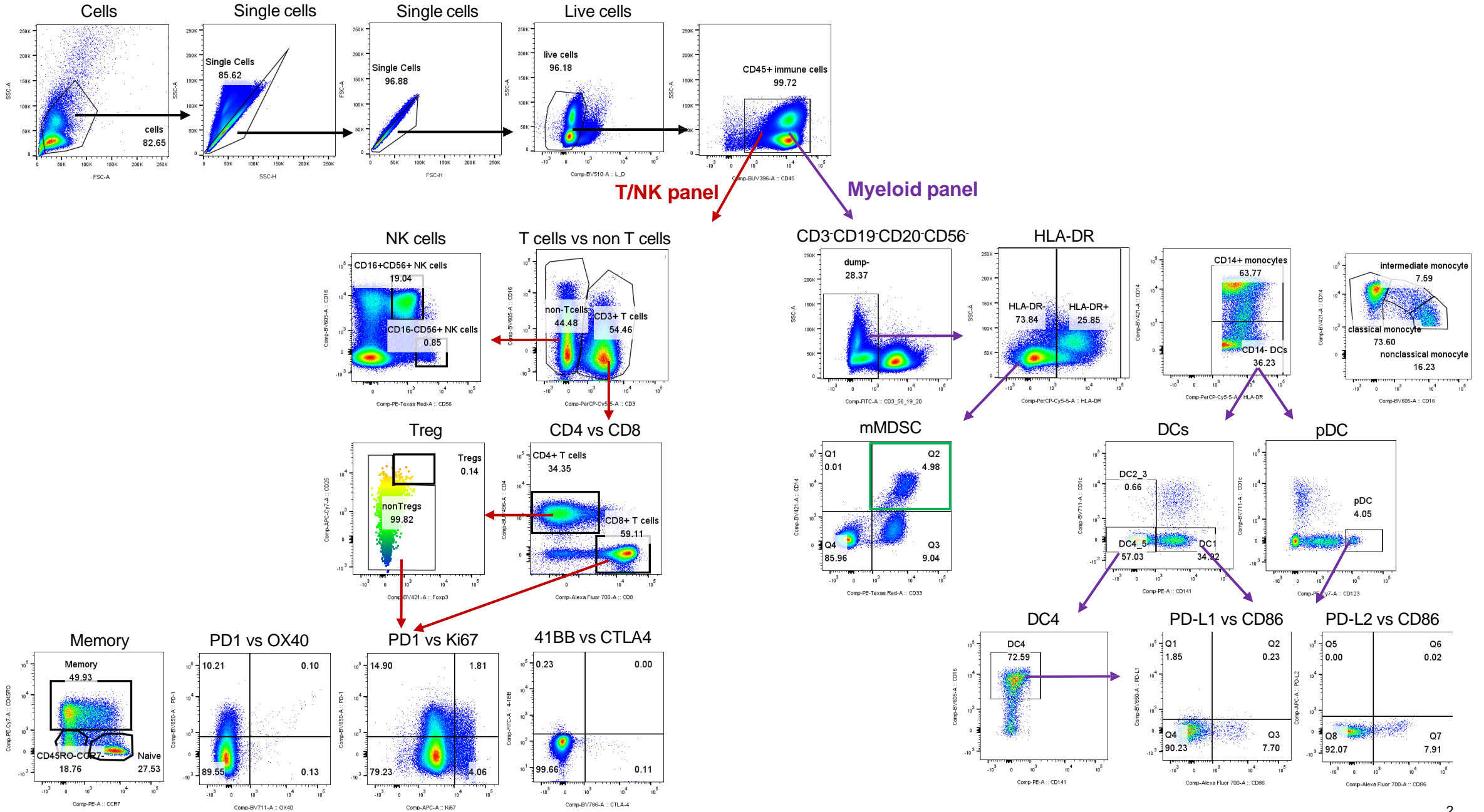
Additional Figures

Fig S1: Flow cytometry Panel Gating Strategy

Fig S2: TMB differences between timepoints

Fig S3: Percentage of biomarkers in blood circulation

Fig S1: Flow cytometry Panel Gating Strategy



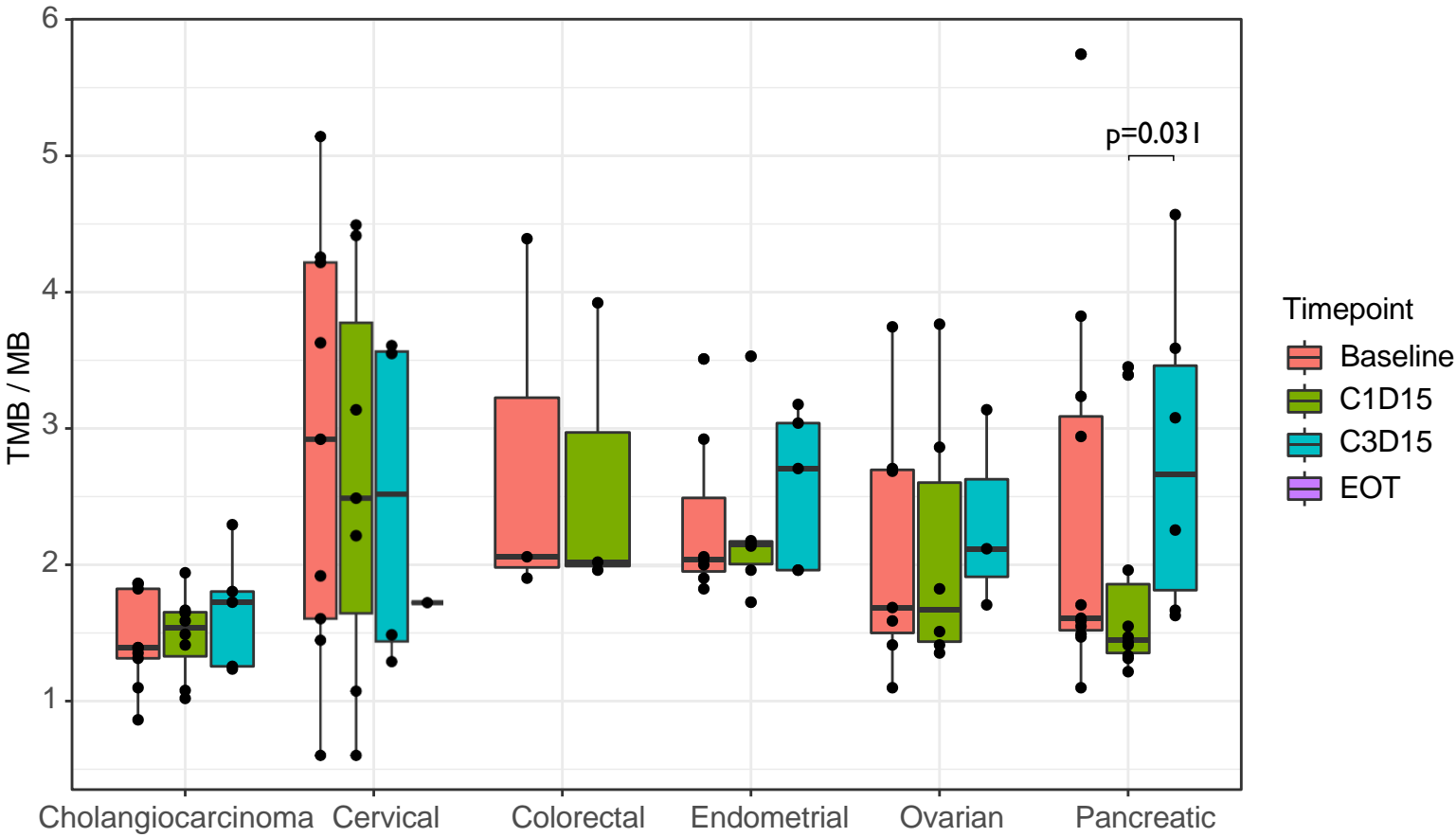


Fig S2: TMB differences between timepoints. Box plot displays TMB differences between timepoints per disease. p value is the result of Mann Whitney U test.

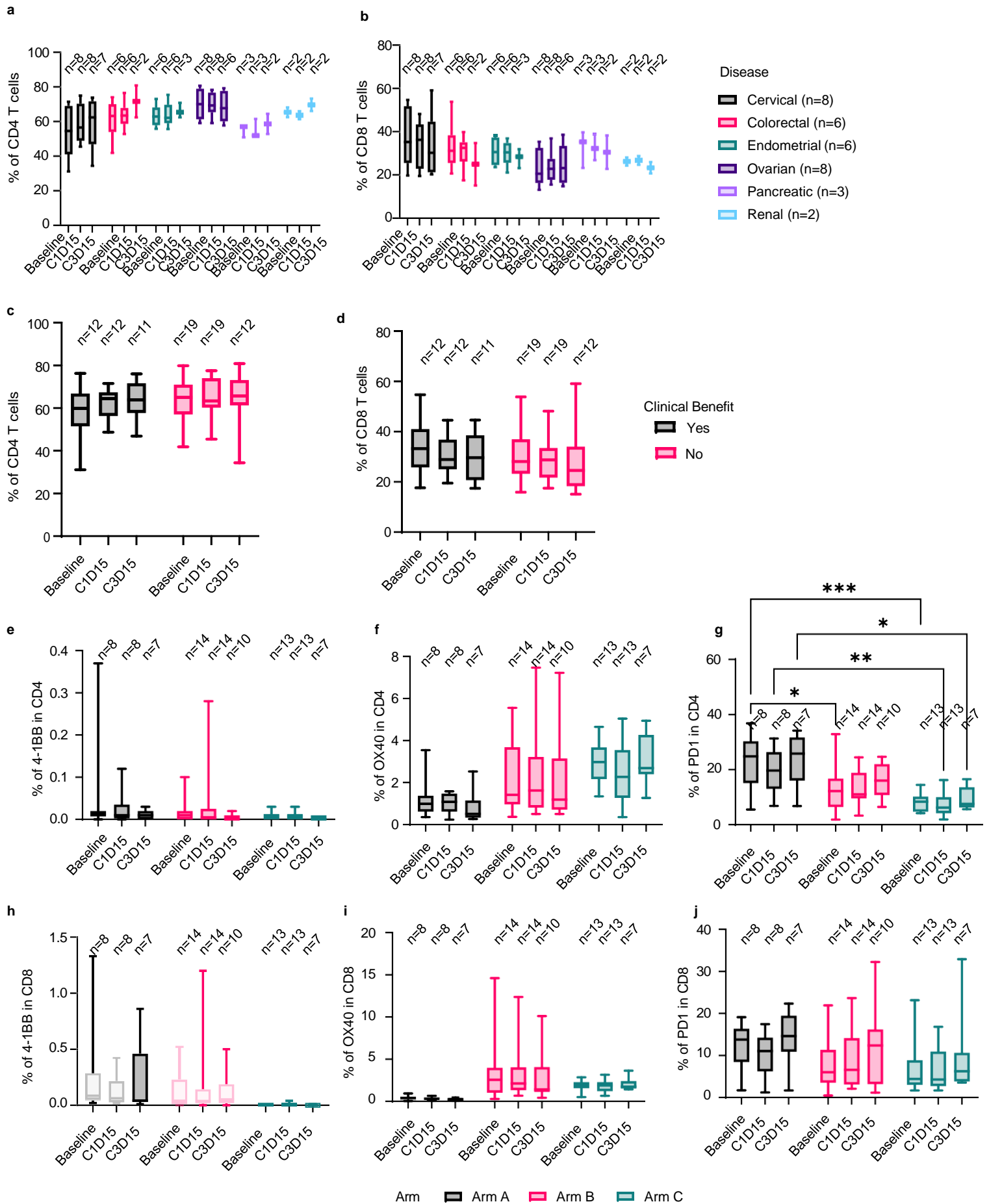


Fig S3: Percentage of biomarkers in blood circulation. Box plots display percentage differences of **a**, CD4 T cells, **b**, CD8 T cells between diseases, **c**, CD4 T cells, **d**, CD8 T cells between clinical benefits, **e**, CD137/4-1BB in CD4 T cells, **f**, OX40 in CD4 T cells, **g**, PD1 in CD4 T cells, **h**, CD137/4-1BB in CD8 T cells, **i**, OX40 in CD8 T cells, **j**, PD1 in CD8 T cells between arms.