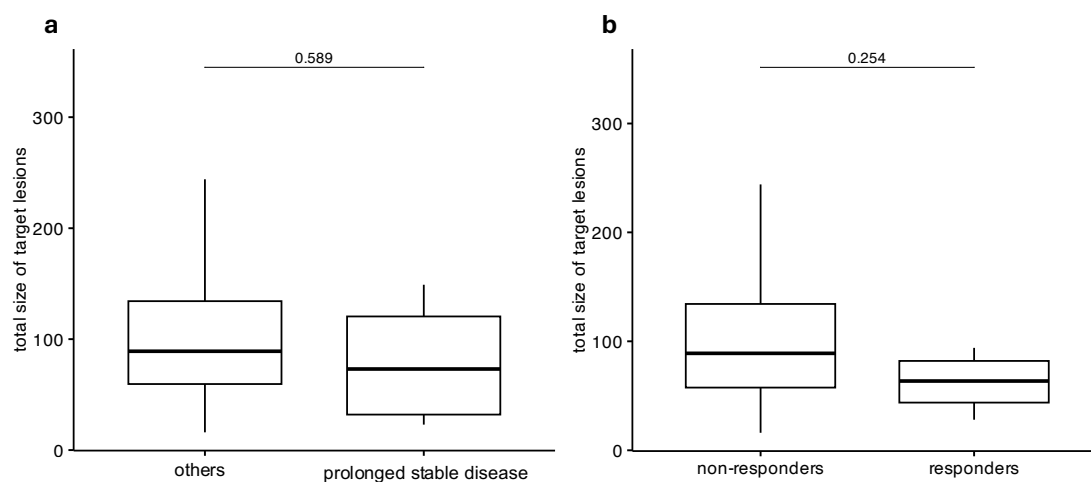


Supplementary Figure 3. Tumor burden in patients experiencing prolonged stable disease



Boxplot showing the comparison of the total size of target lesions between patients experiencing a prolonged stable disease versus not (a) and between responders and non-responders (b). Y-axis represent the total size of target lesion in millimeters (mm). The boxes are defined by the upper and lower quartile; the median is shown as a bold colored horizontal line; whiskers extend to the most extreme data point which is no more than 1.5 times the interquartile range from the box.