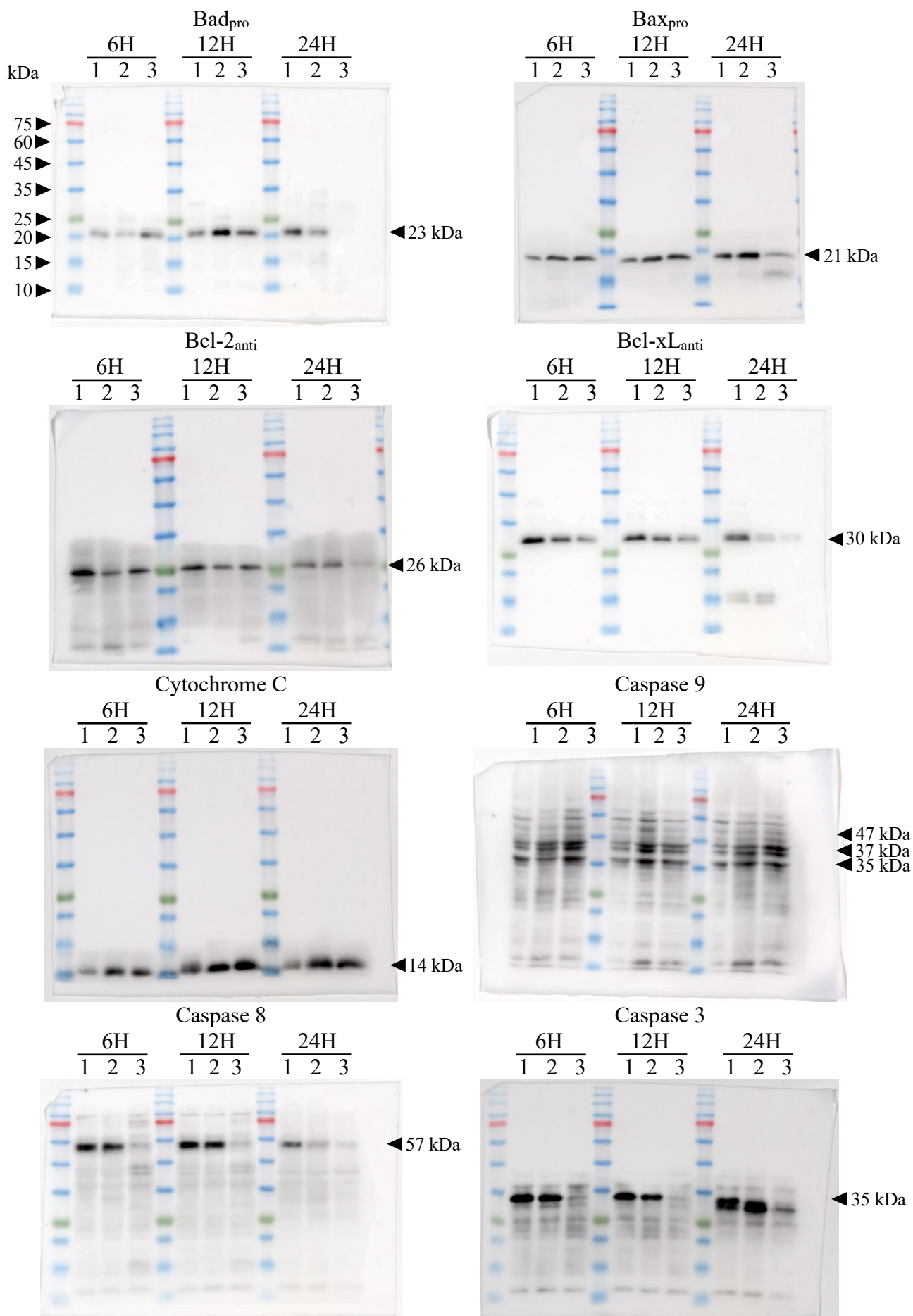
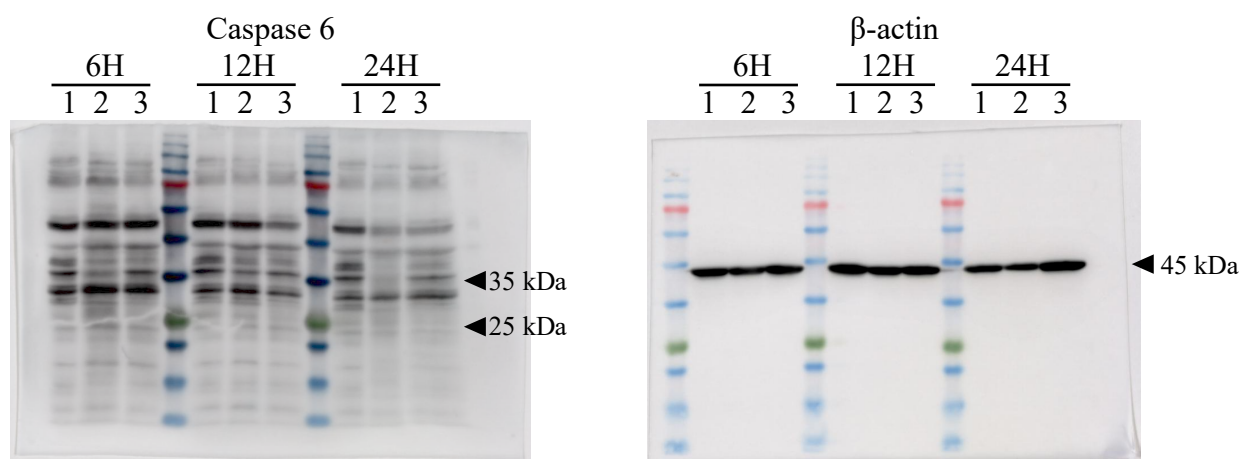
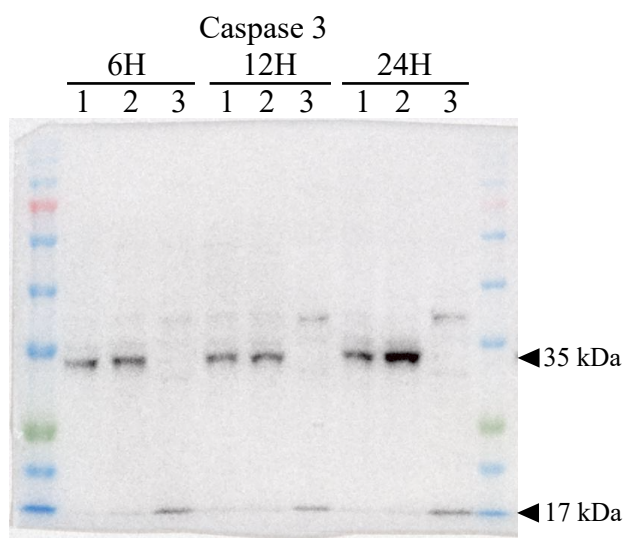


A





B



**Supplementary Figure 4. Uncropped Western Blot Images.** Panels A and B show the uncropped Western blot images corresponding to Figure 5A and Supplementary Figure 2, respectively. Lanes 1, 2, and 3 represent cell lysates from untreated HeLa cells, HeLa cells treated with 12  $\mu$ g/mL rHALT-1, and HeLa cells treated with 100 ng/mL hTRAIL, respectively. Samples were collected at three different time points: 6, 12, and 24 hours after treatment. The arrowhead indicates the target protein and its corresponding molecular weight (in kilodaltons). The protein marker (PM2610) was purchased from SMOBIO Technology, Inc. (Hsinchu, Taiwan), and the sizes of the marker bands are shown in the top left image.