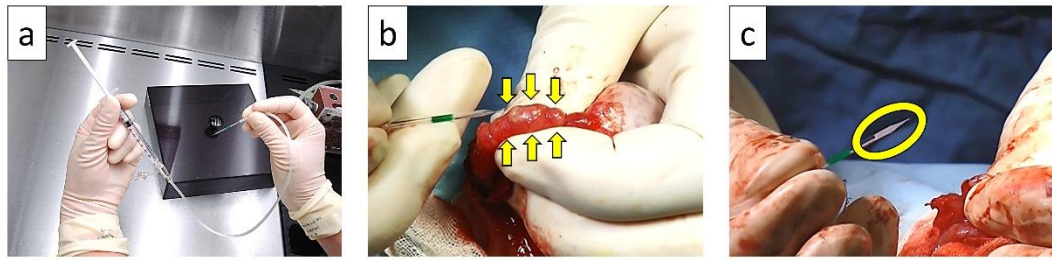
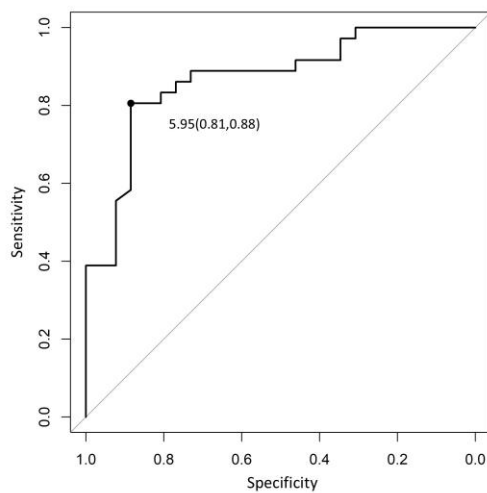


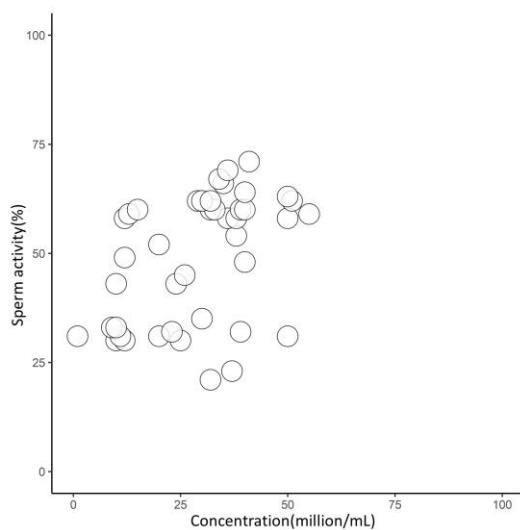
Supplemental Figure:



Supplemental Figure 1. Procedure of Cauda Epididymal Sperm Aspiration (CESA). a: Device used for CESA. A homemade glass pipette with an attached tube, fitted onto a 1-cc syringe. b: Just before inserting the tip of the glass pipette. c: A sufficient volume of whitish epididymal fluids collected inside the pipette.



Supplemental Figure 2. Receiver operating characteristic curve analysis. Evaluation of the predictive value of FSH for sperm retrieval using Receiver operating characteristic curve analysis.



Supplemental Figure 3. The distribution of sperm findings collected at Cauda Epididymal Sperm Aspiration (CESA). Bubble plot showing the relationship between sperm concentration (million/mL) and sperm motility (%). The median concentration and motility of sperm findings were 32 million/mL and 56%, respectively.