

Uncropped Gels and Blots images for

Mass spectrometry-based proteomics to study gastric carcinogenesis: pathophysiological molecular characterization.

Nayra Felípez ¹, Sheyla Montori ¹, Alba Valero ¹, Enrique Santamaría ², Karina Ausin ², Erika Peral ², Joan Llach ^{3,4}, Pedro Delgado ⁵, Pablo Florez-Diez ⁶, Eva Barreiro ⁶, Elena Arruebo ⁷, Raquel Vicente ⁷, M Teresa Soria ⁷, Alain Huerta ⁸, Silvia Patricia Ortega ⁹, Henar Núñez ¹⁰, Pilar Díez ¹⁰, Alberto Herreros ¹¹, Gadea Hontoria ¹², Rosa María Saíz ¹², Luis Hernández ¹³, Carolina Mangas-Sanjuan ¹³, Oliver Patrón ¹⁴, Gonzalo Hijos-Mallada ¹⁵, María José Domper ¹⁵, Sara Zarraquiños ¹⁶, Astrid Irene Díez-Martín ¹⁶, Patricia Gonçalves ¹⁷, Diego de Frutos ¹¹, José Santiago ¹¹, Adelina García ¹⁸, Alicia Martín-Lagos ¹⁸, Fermín Estremera-Arévalo ¹⁹, Marta Gómez Alonso ¹⁹, Anabella Cuestas ^{3,4}, Francesc Balaguer ^{3,4}, Sergi Castellví-Bel ^{3,4}, Glòria Fernandez-Esparrach ^{3,4}, Miriam Cuatrecasas ²⁰, Leticia Moreira ^{3,4}, Joaquín Fernández-Irigoyen ², Eduardo Albéniz ¹⁹, EpiGASTRIC EDGAR Consortium.

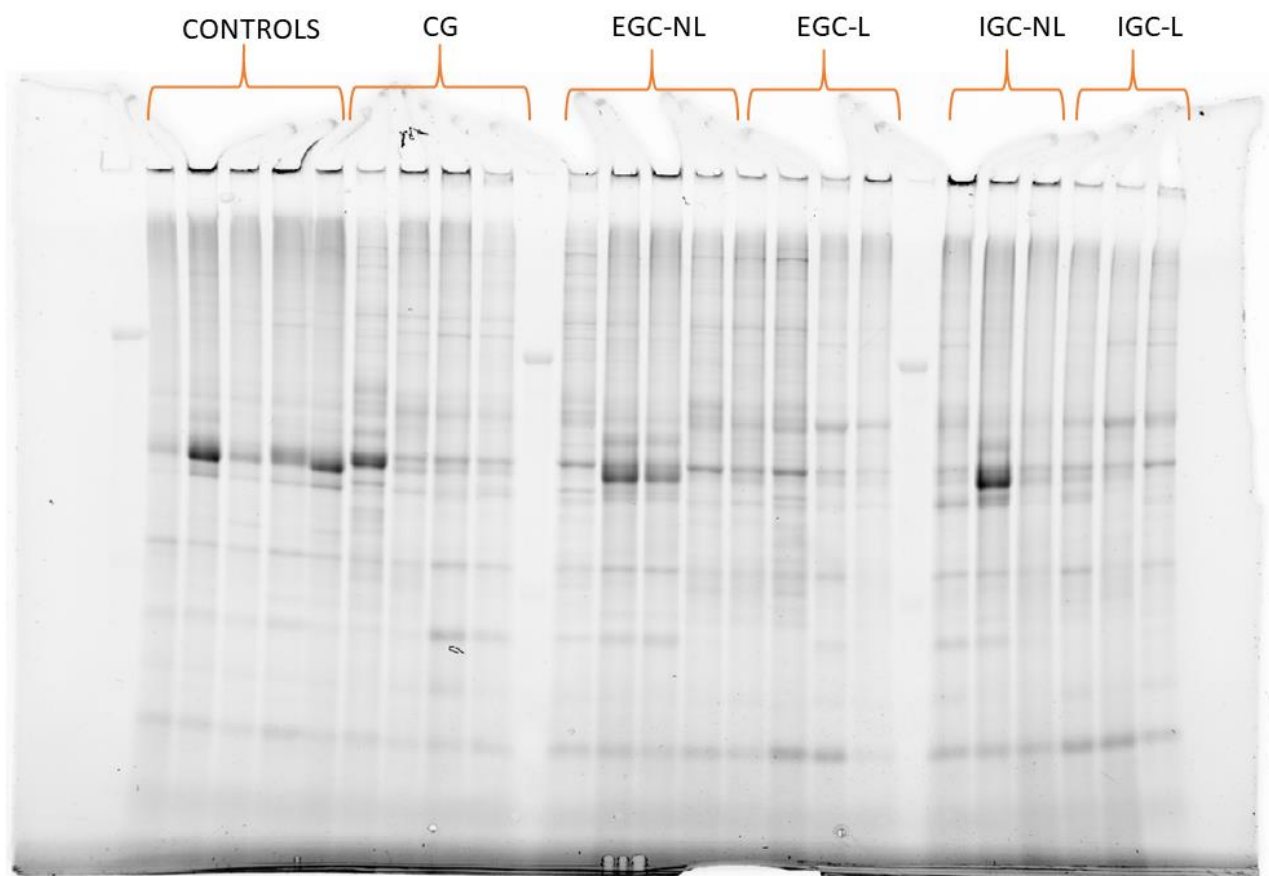
Gel images for Figure 4E-F.

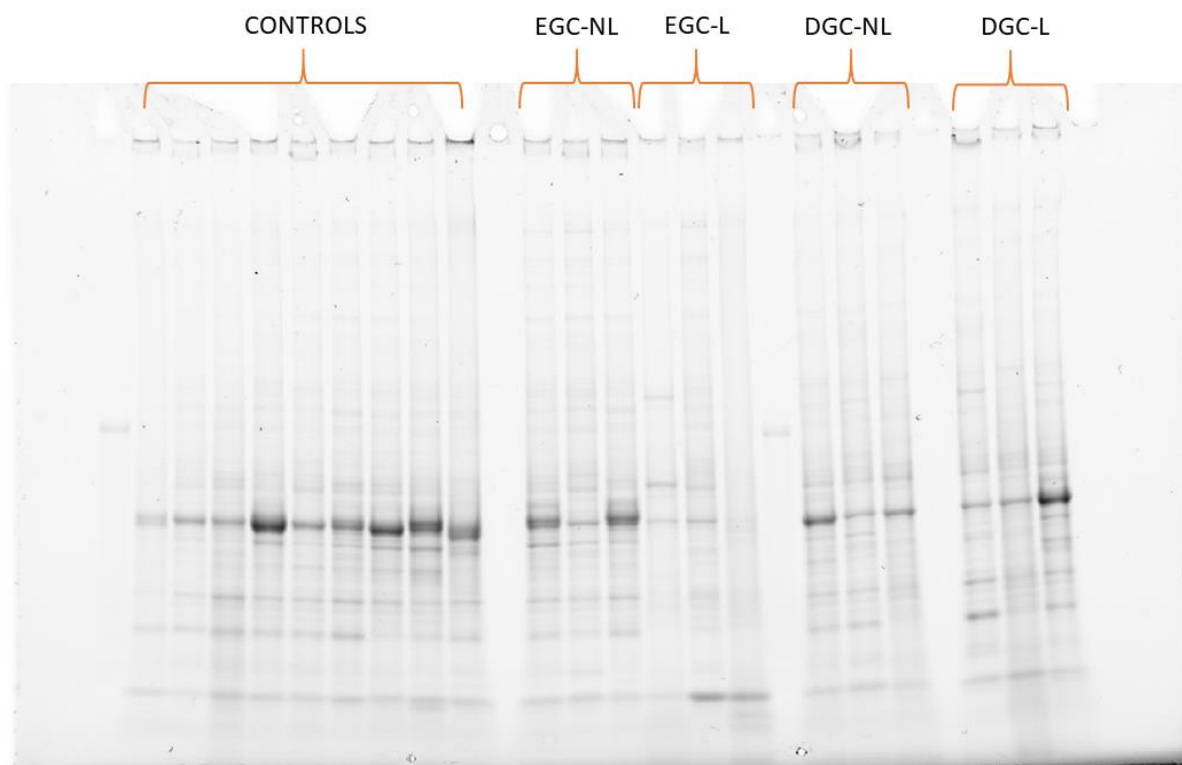
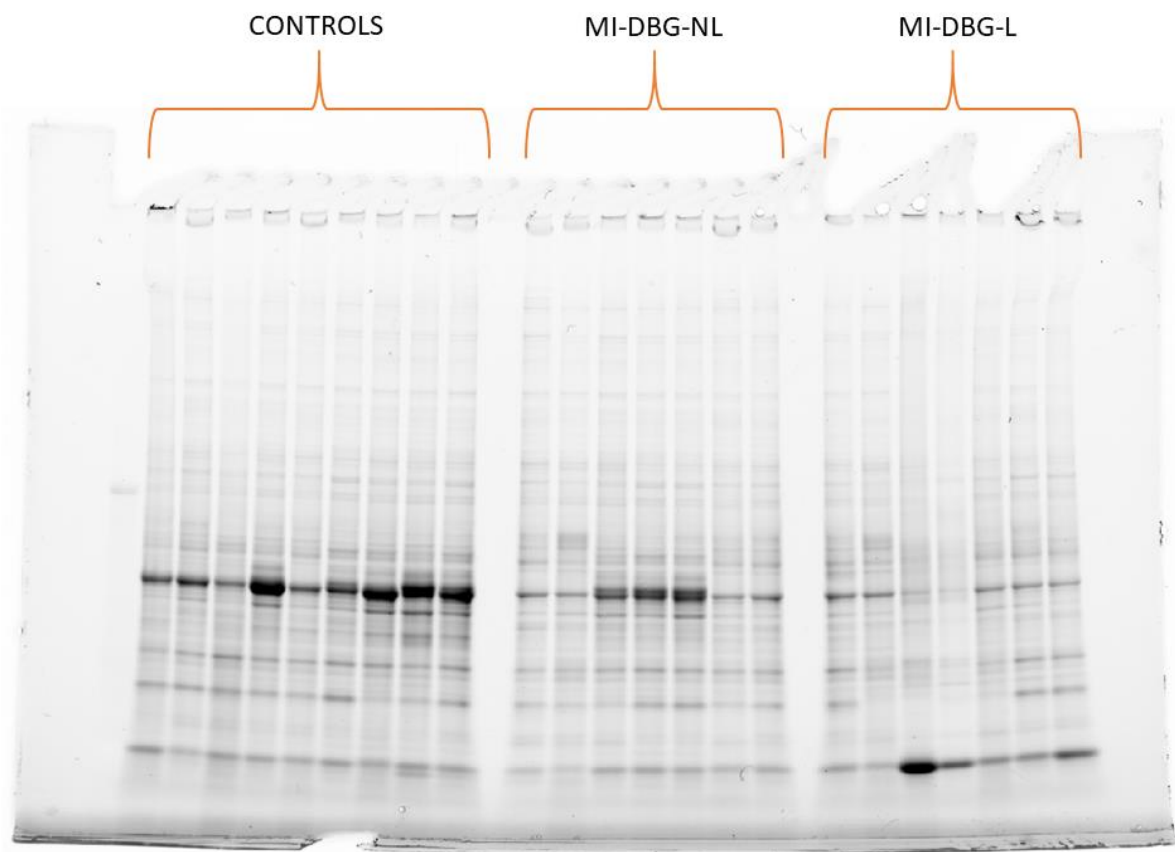
Upper image showing the loading of controls, chronic gastritis (CG), early gastric cancer (adjacent = NL, lesional = L EGC), as well as intestinal gastric cancer (adjacent = NL, lesional = L IGC).

Middle image showing the loading of controls and intestinal metaplasia-low grade dysplasia (adjacent = NL, lesional = L IM-LGD).

The lower image showing the loading of controls, early gastric cancer (adjacent = NL, lesional = L EGC), as well as diffuse gastric cancer (adjacent = NL, lesional = L DGC).

Equal loading of the gels was assessed using stain-free imaging technology.



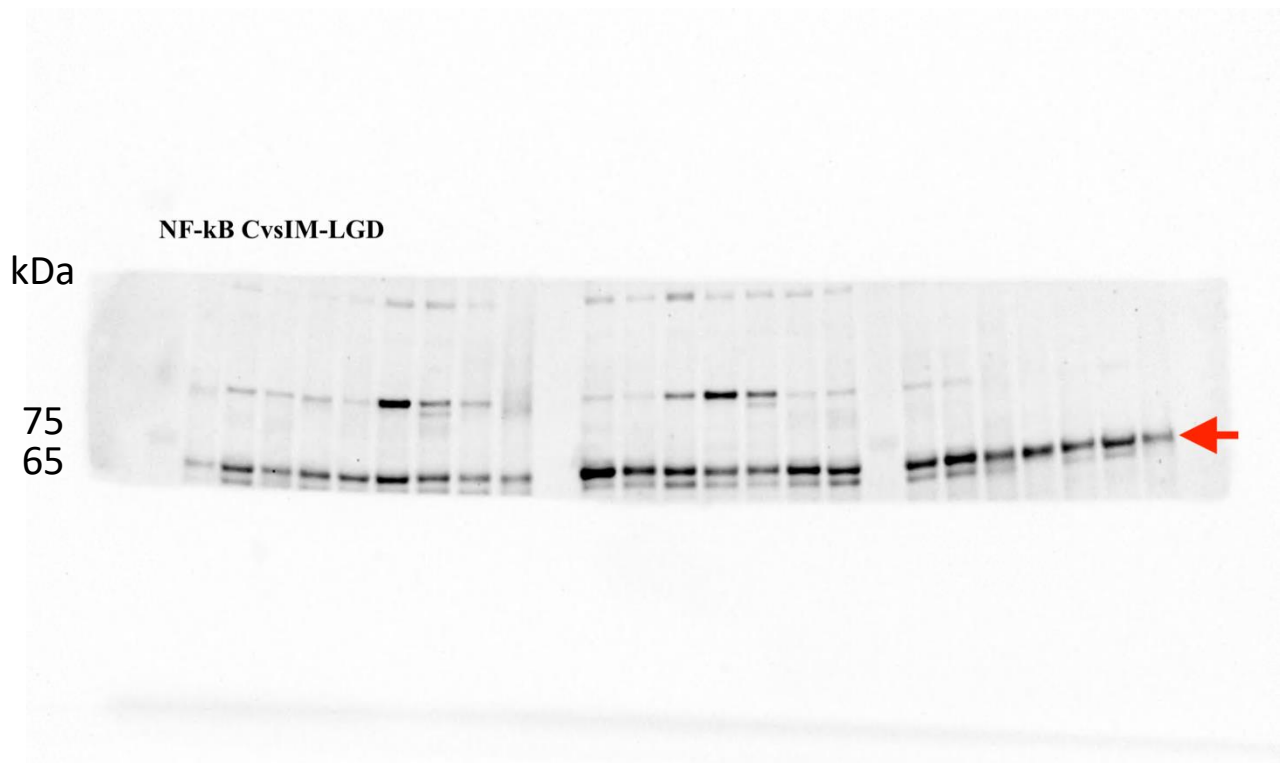


Western blot images for Figure 4E-F.

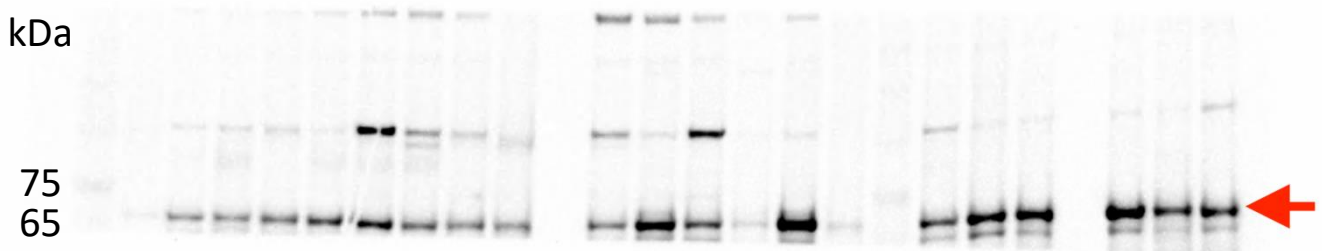
Red arrows highlight the cropped images presented on figure 4E-F.

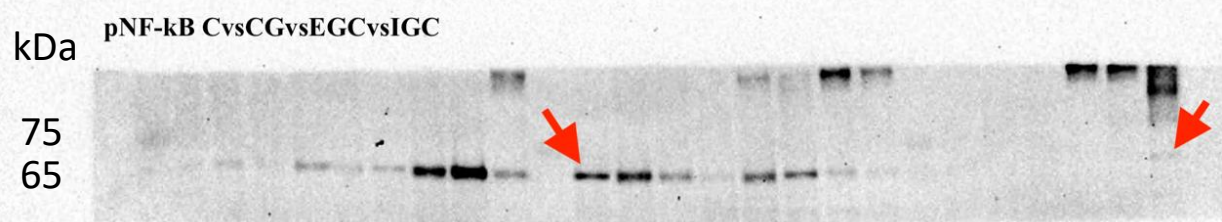
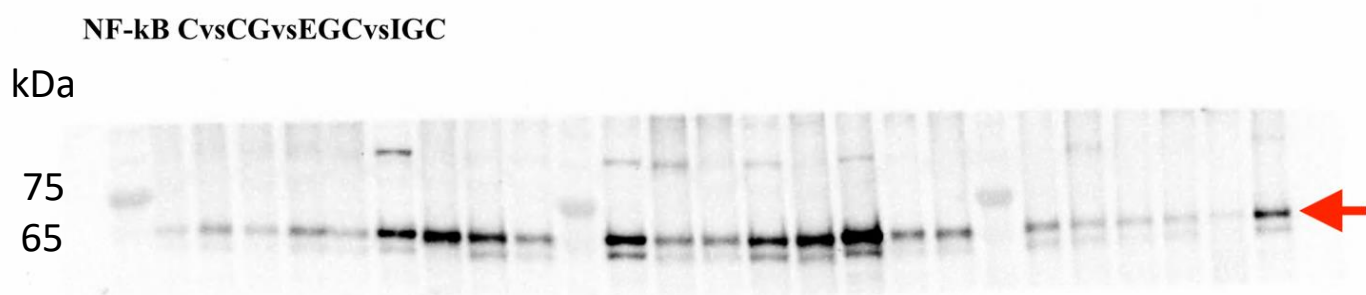
Molecular weight for the protein ladder showed on the left.

Both NF-Kb and pNF-kB were detected on the same gel (membrane).

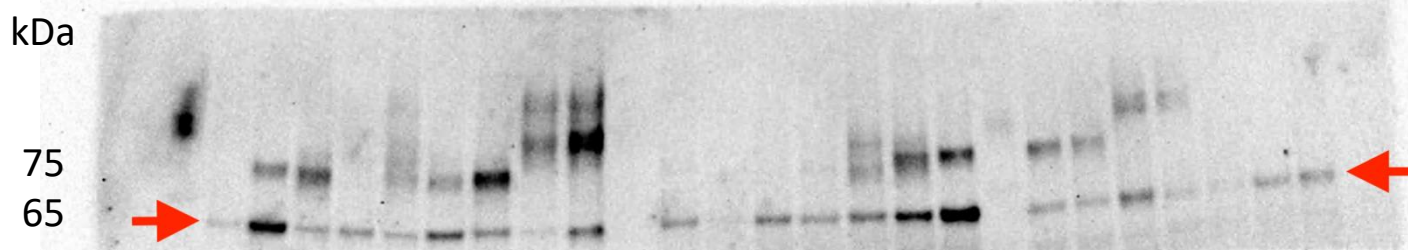


NF-kB CvsDGC

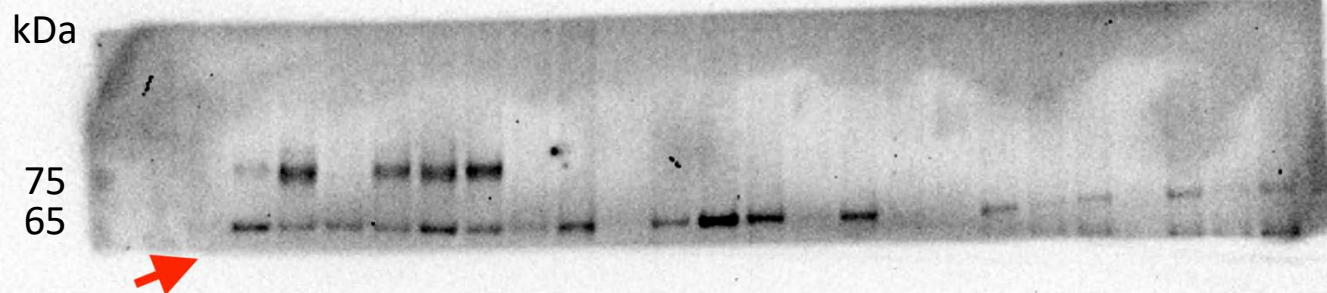




pNF-kB CvsIM-LGD



pNF-kB CvsDGC



Gel images for Figure 4G-H

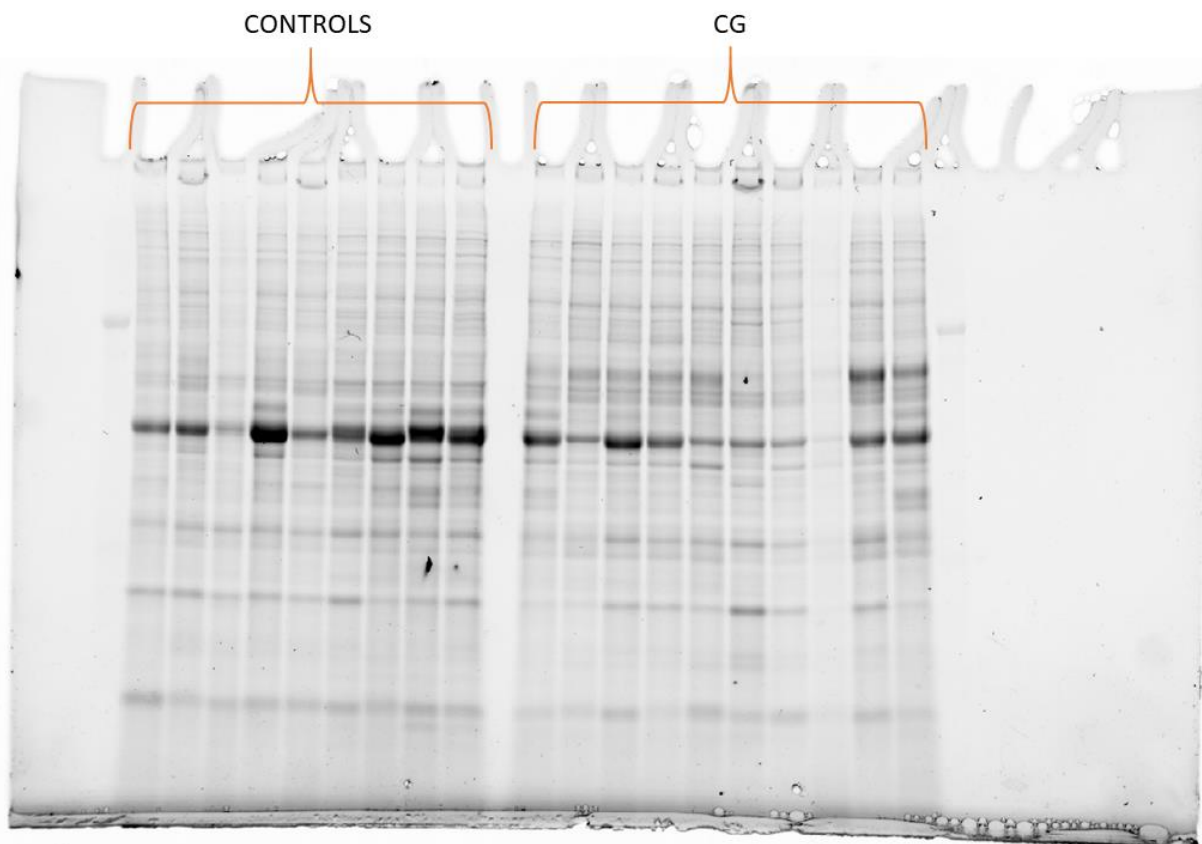
Upper image showing the loading of controls and chronic gastritis (CG).

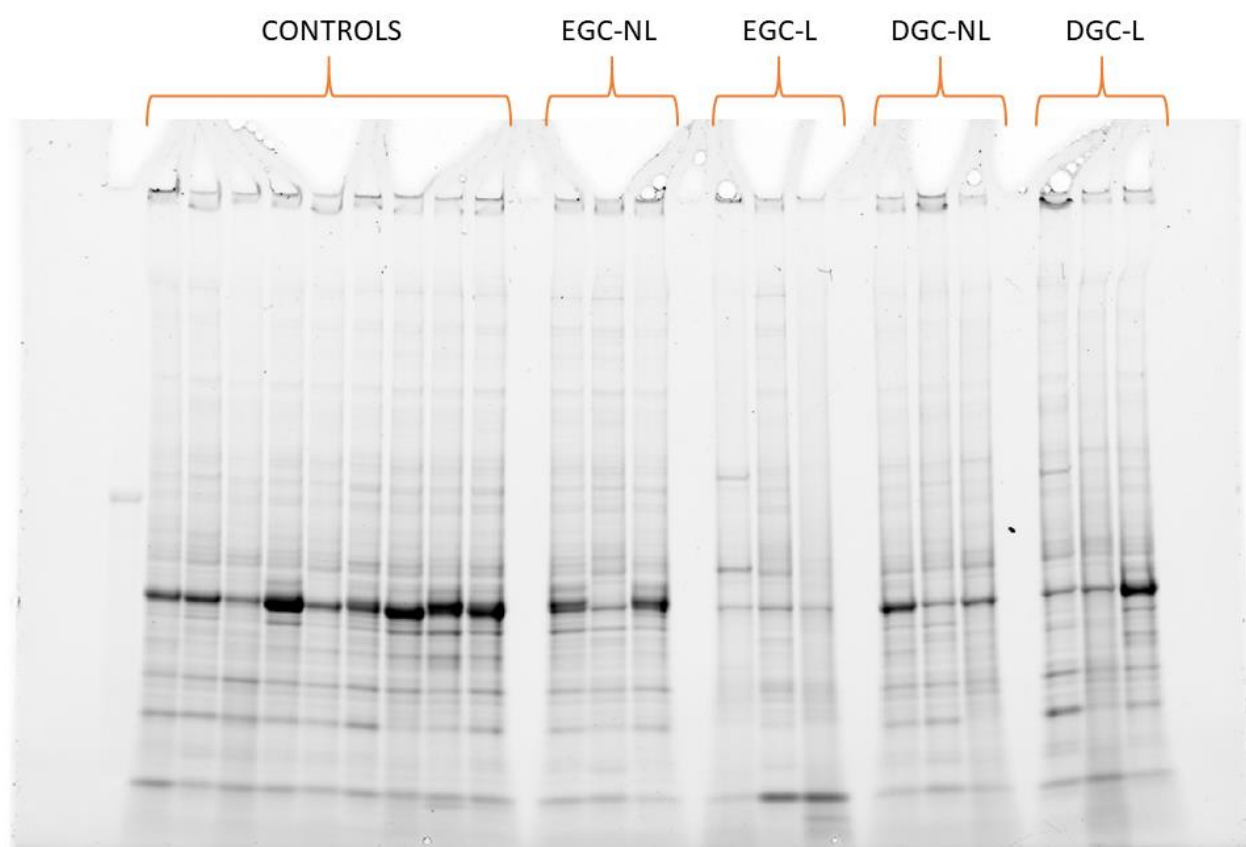
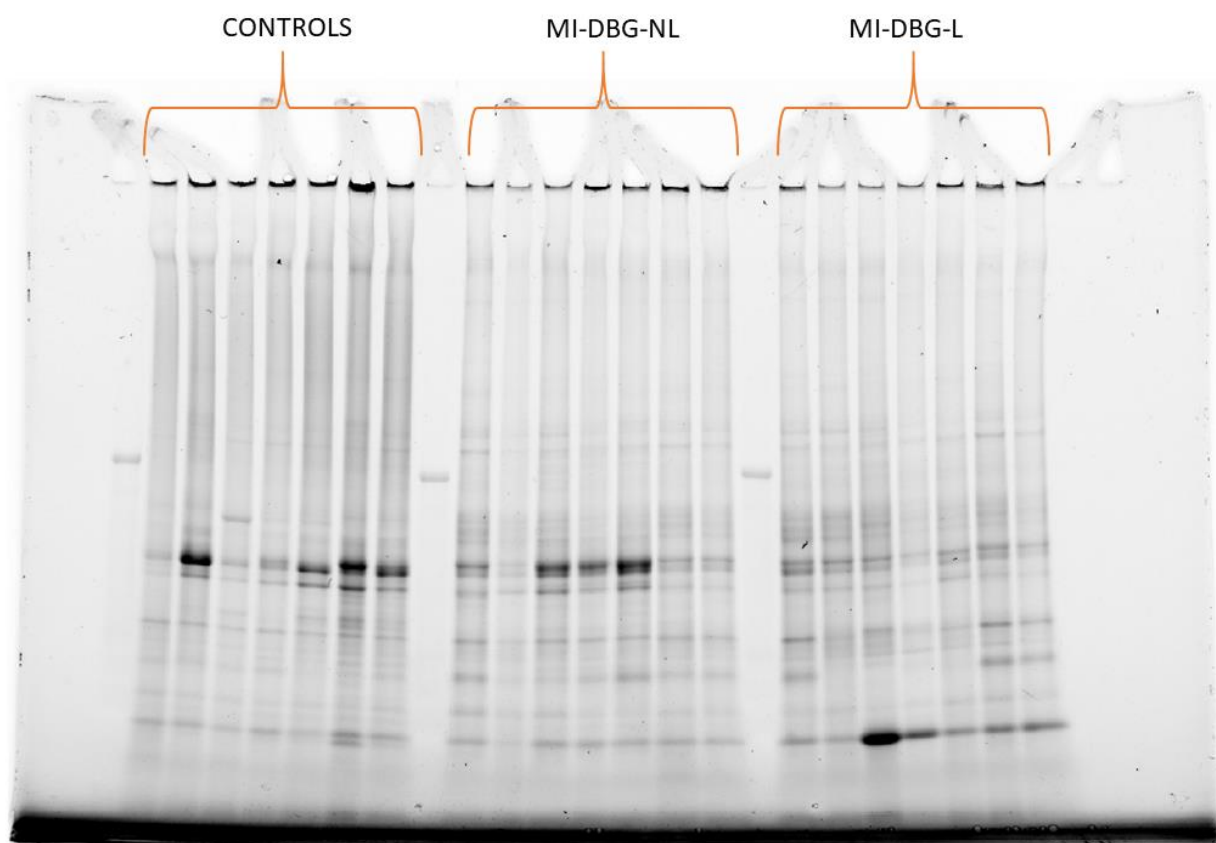
Second image showing the loading of controls and intestinal metaplasia-low grade dysplasia (adjacent = NL, lesional = L IM-LGD).

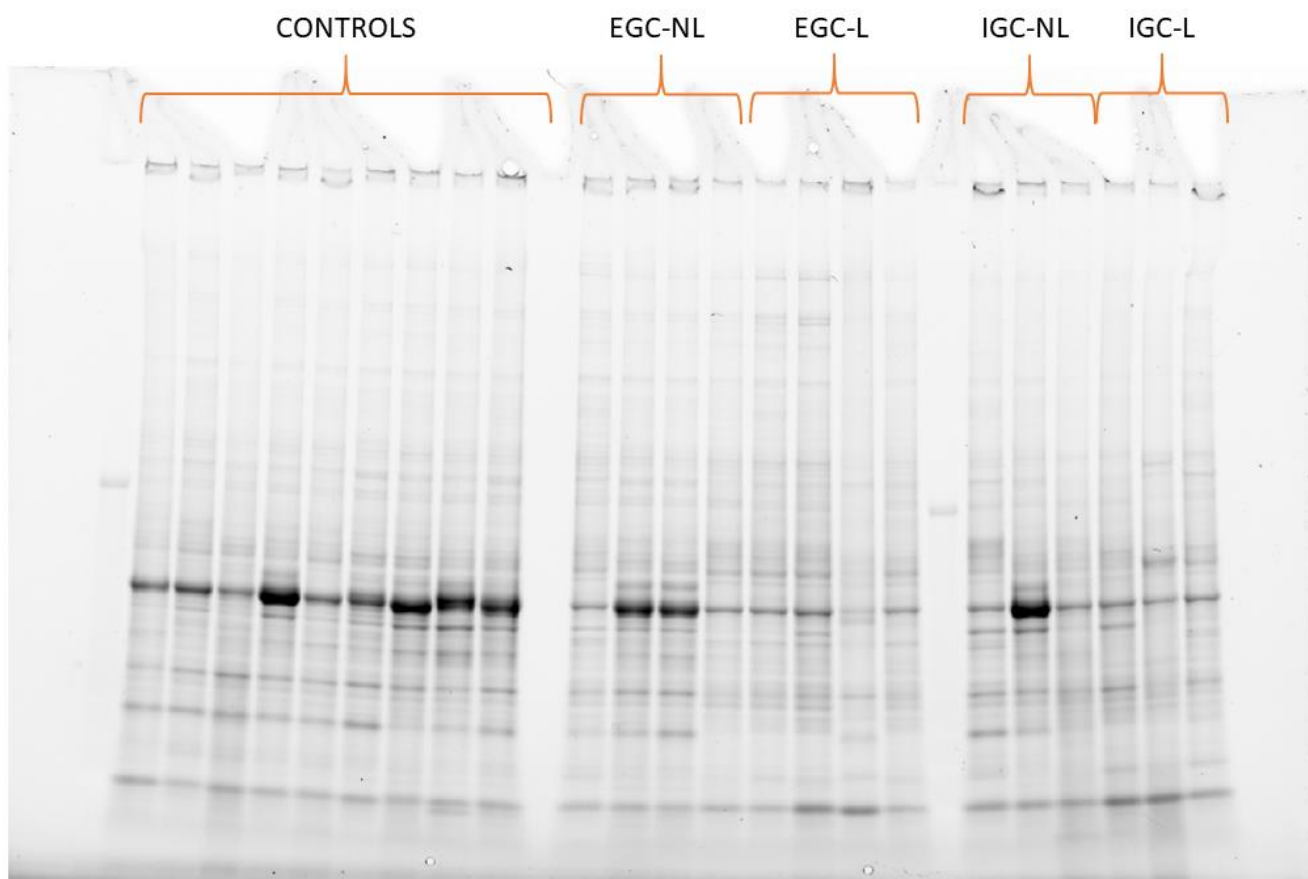
Third image showing the loading of controls, early gastric cancer (adjacent = NL, lesional = L EGC), as well as diffuse gastric cancer (adjacent = NL, lesional = L DGC).

The lower image showing the loading of controls, early gastric cancer (adjacent = NL, lesional = L EGC), as well as intestinal gastric cancer (adjacent = NL, lesional = L IGC).

Equal loading of the gels was assessed using stain-free imaging technology.





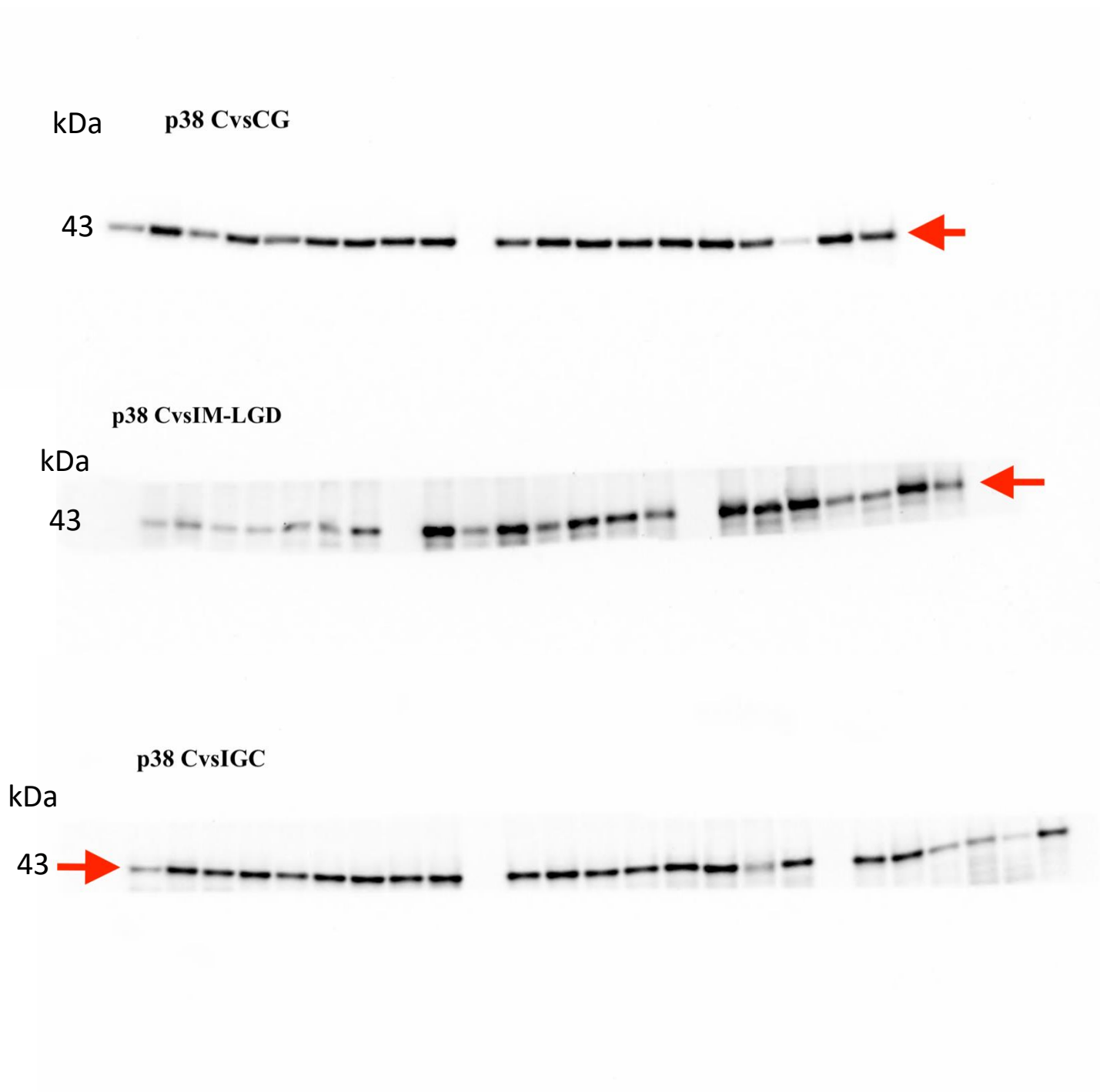


Western blot images for Figure 4G-H.

Red arrows highlight the cropped images presented on figure 4G-H.

Molecular weight for the protein ladder showed on the left.

Both pp38 and p38 were detected on the same gel (membrane).



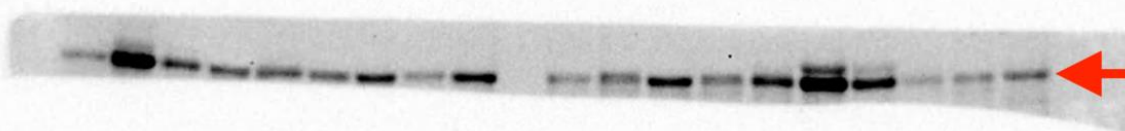
kDa p38 CvsDGC

43



kDa pp38 CvsCG

43



kDa pp38 CvsIM-LGD

43

