

Supplementary material

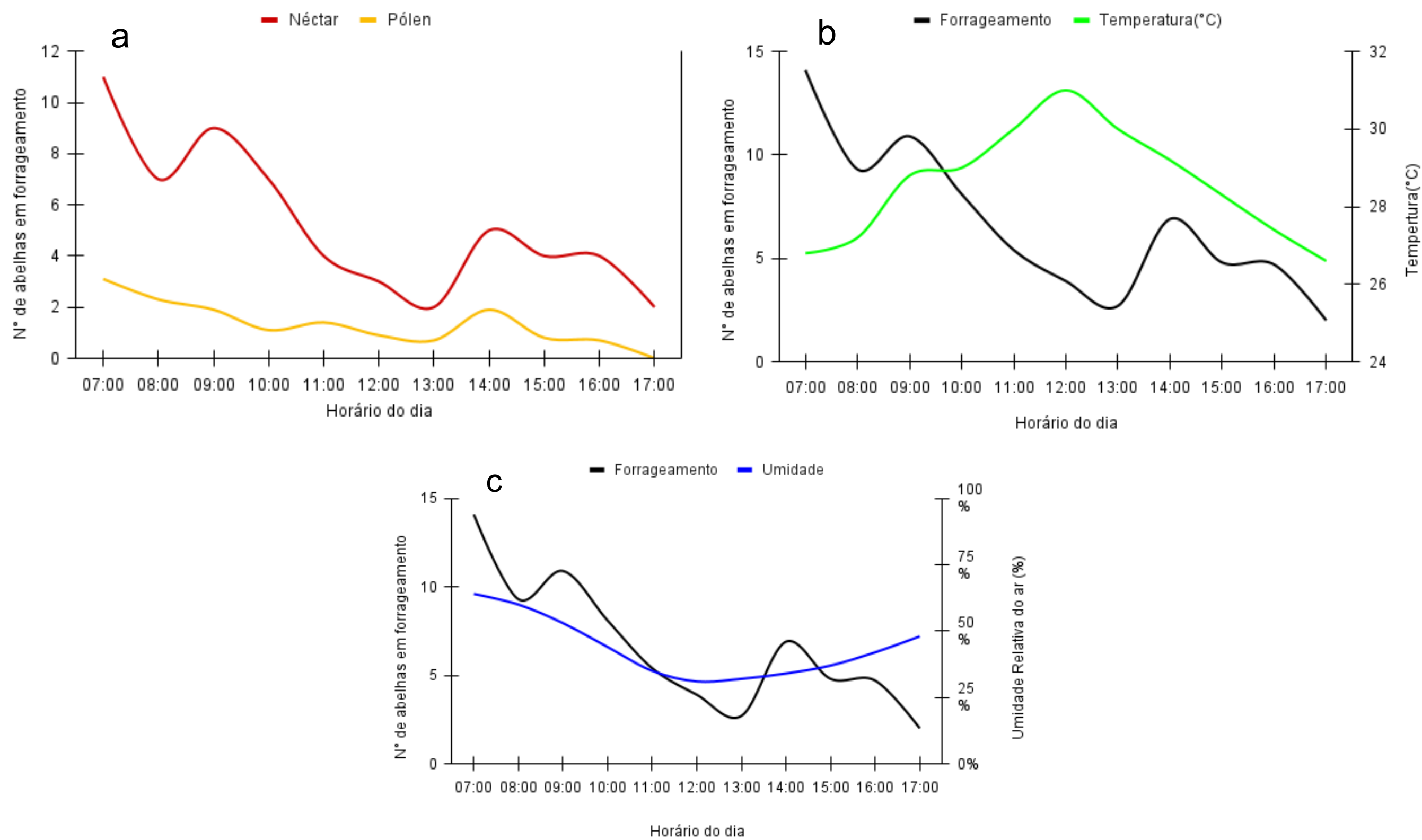


Fig. 1 Seasonal foraging behavior of *M. scutellaris* during spring 2022. a) Foraging patterns for nectar/water (red line) and polle/resins (yellow lines); b) Foraging patterns (black line) in relation to temperature fluctuations(green line); c) Foraging pattern (black line) in relation to variations in air humidity (blue line).

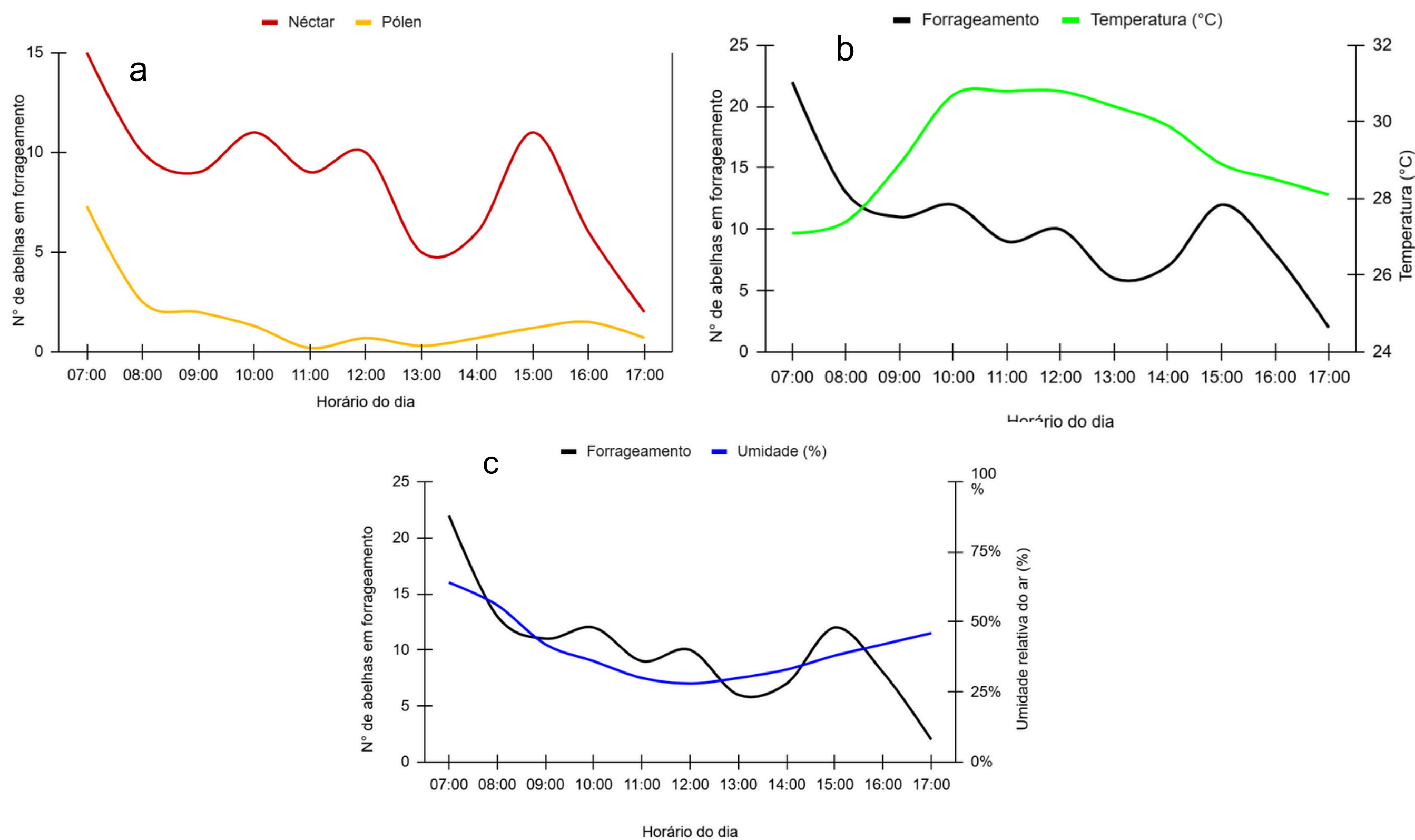


Fig. 2 Seasonal foraging behavior of *M. scutellaris* during Summer 2023. a) Foraging patterns for nectar/water (red line) and polle/resins (yellow lines); b) Foraging patterns (black line) in relation to temperature fluctuations(green line); c) Foraging pattern (black line) in relation to variations in air humidity (blue line).

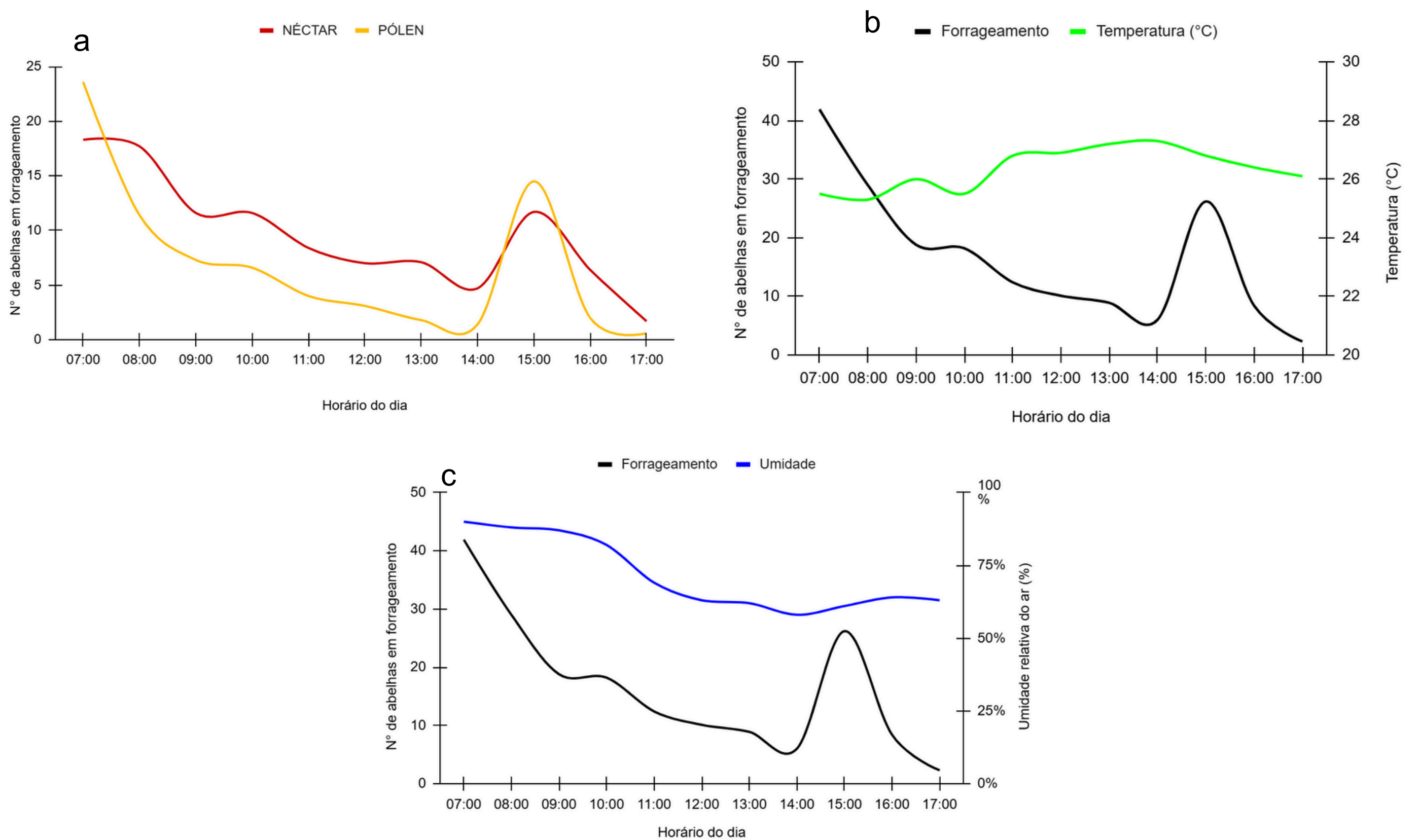


Fig. 3 Seasonal foraging behavior of *M. scutellaris* during fall 2023. a) Foraging patterns for nectar/water (red line) and polle/resins (yellow lines); b) Foraging patterns (black line) in relation to temperature fluctuations (green line); c) Foraging pattern (black line) in relation to variations in air humidity (blue line).

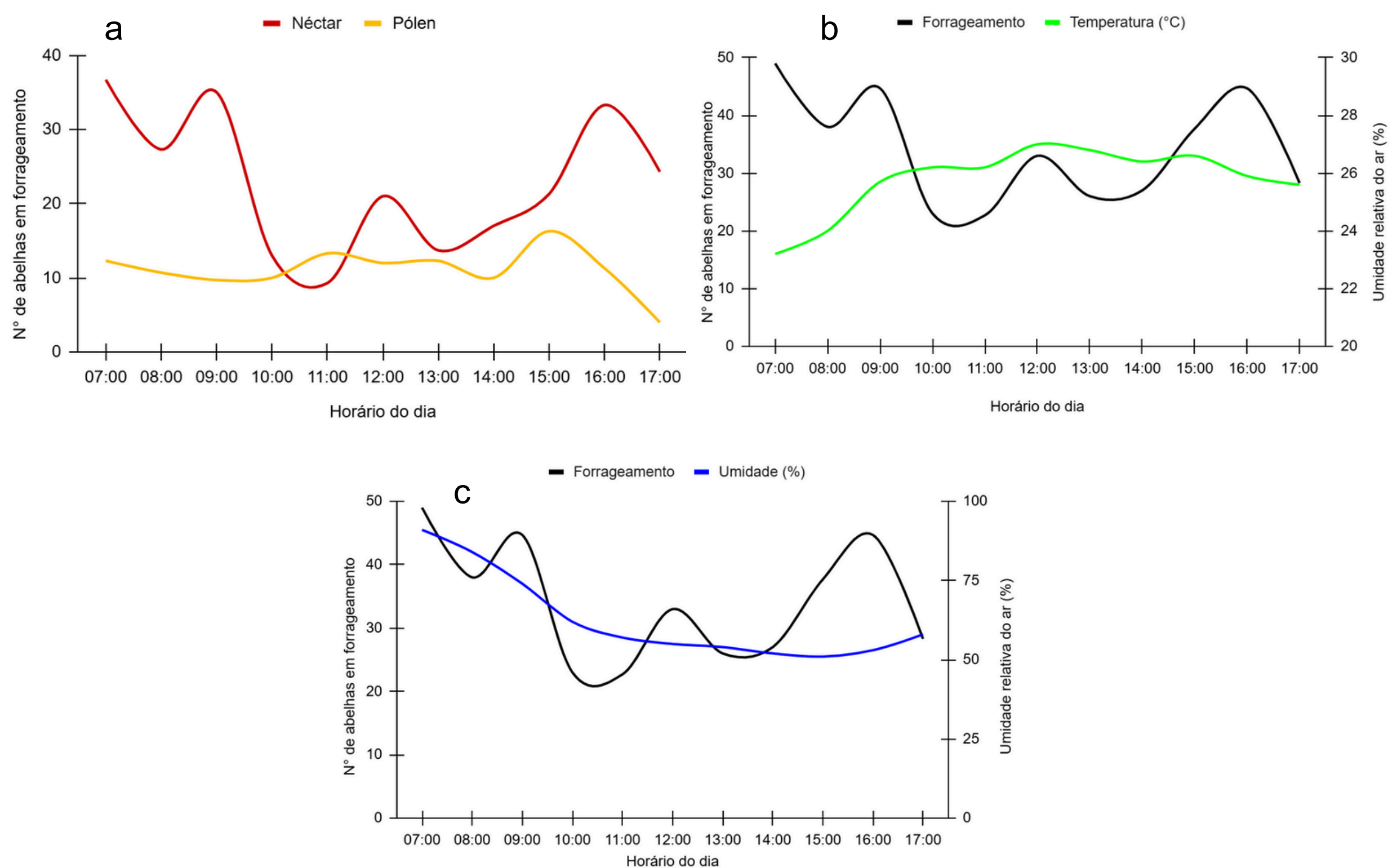


Fig. 4 Seasonal foraging behavior of *M. scutellaris* during winter 2023. a) Foraging patterns for nectar/water (red line) and polle/resins (yellow lines); b) Foraging patterns (black line) in relation to temperature fluctuations (green line); c) Foraging pattern (black line) in relation to variations in air humidity (blue line).

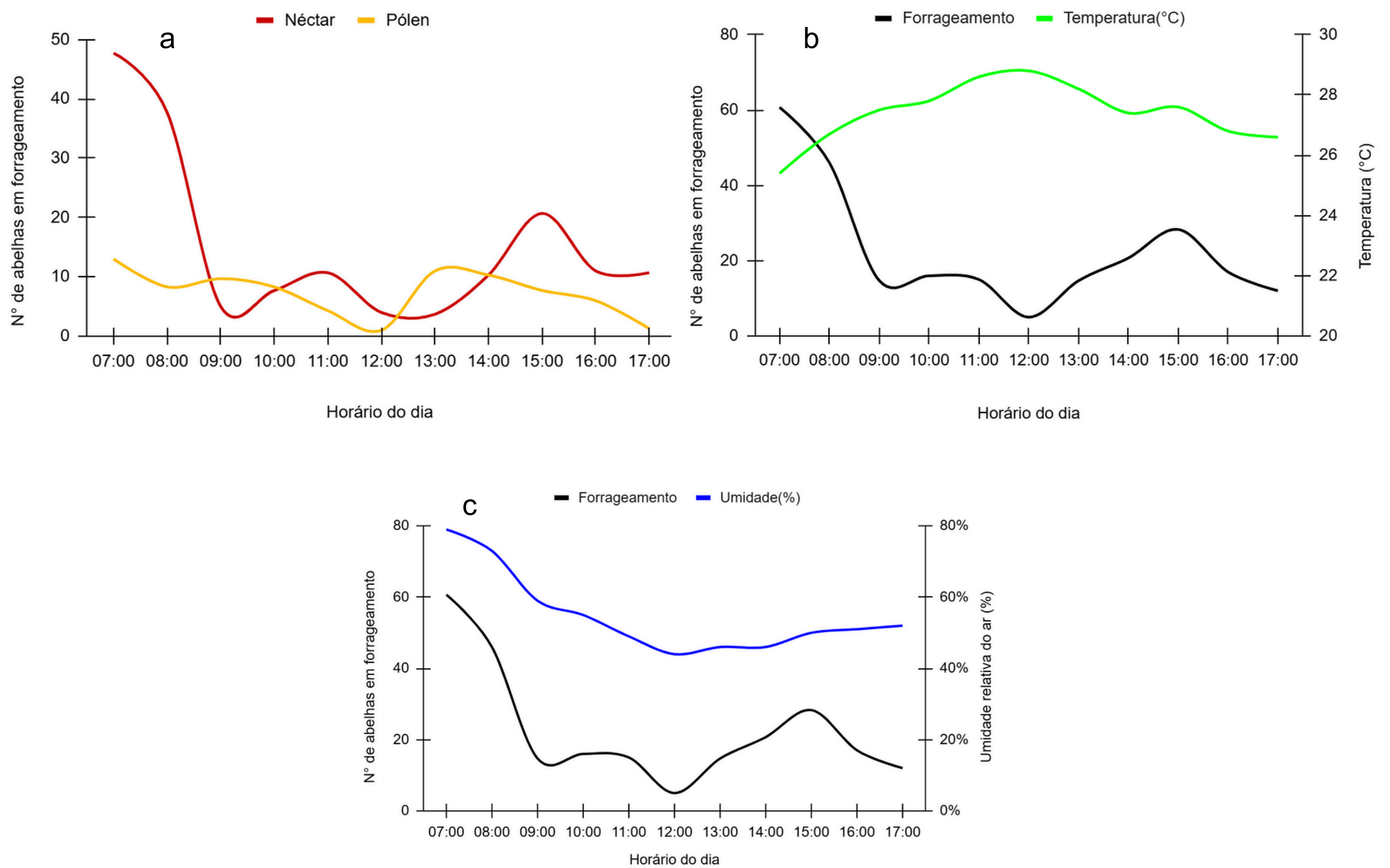


Fig. 5 Seasonal foraging behavior of *M. scutellaris* during spring 2023. a) Foraging patterns for nectar/water (red line) and polle/resins (yellow lines); b) Foraging patterns (black line) in relation to temperature fluctuations (green line); c) Foraging pattern (black line) in relation to variations in air humidity (blue line).

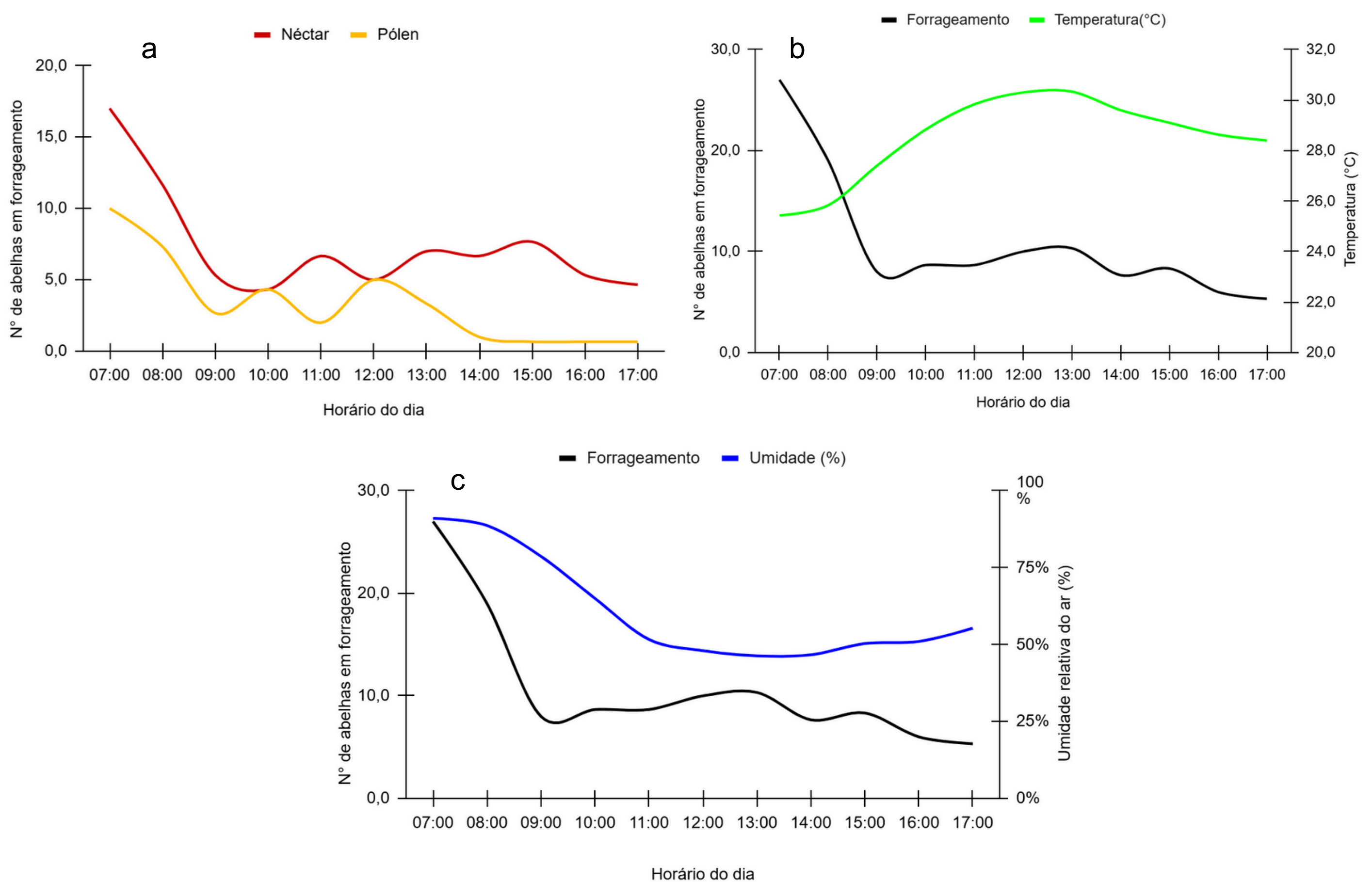


Fig. 6 Seasonal foraging behavior of *M. scutellaris* during summer 2024. a) Foraging patterns for nectar/water (red line) and polle/resins (yellow lines); b) Foraging patterns (black line) in relation to temperature fluctuations (green line); c) Foraging pattern (black line) in relation to variations in air humidity (blue line).

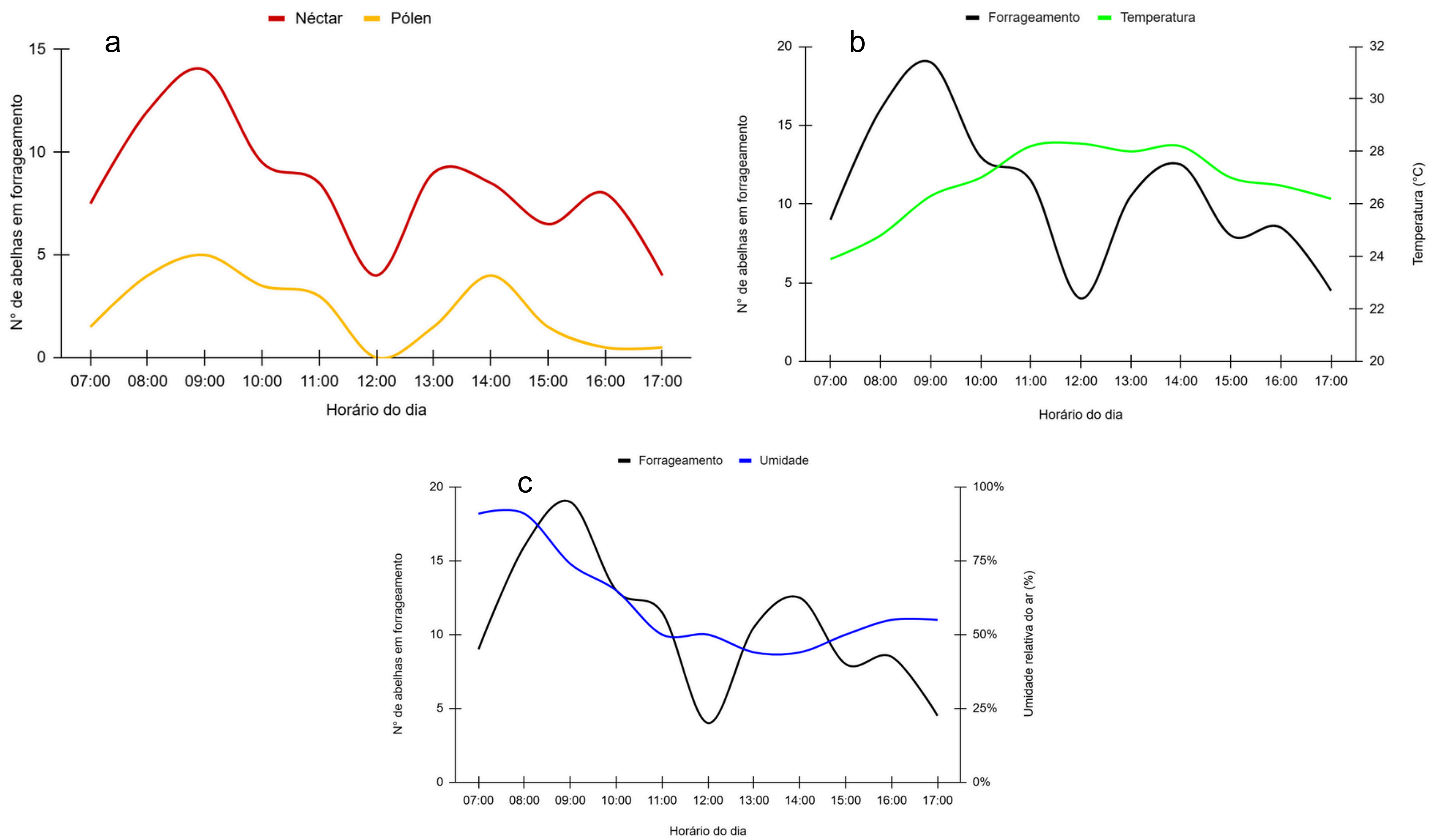


Fig. 7 Seasonal foraging behavior of *M. scutellaris* during fall 2024. a) Foraging patterns for nectar/water (red line) and polle/resins (yellow lines); b) Foraging patterns (black line) in relation to temperature fluctuations(green line); c) Foraging pattern (black line) in relation to variations in air humidity (blue line).

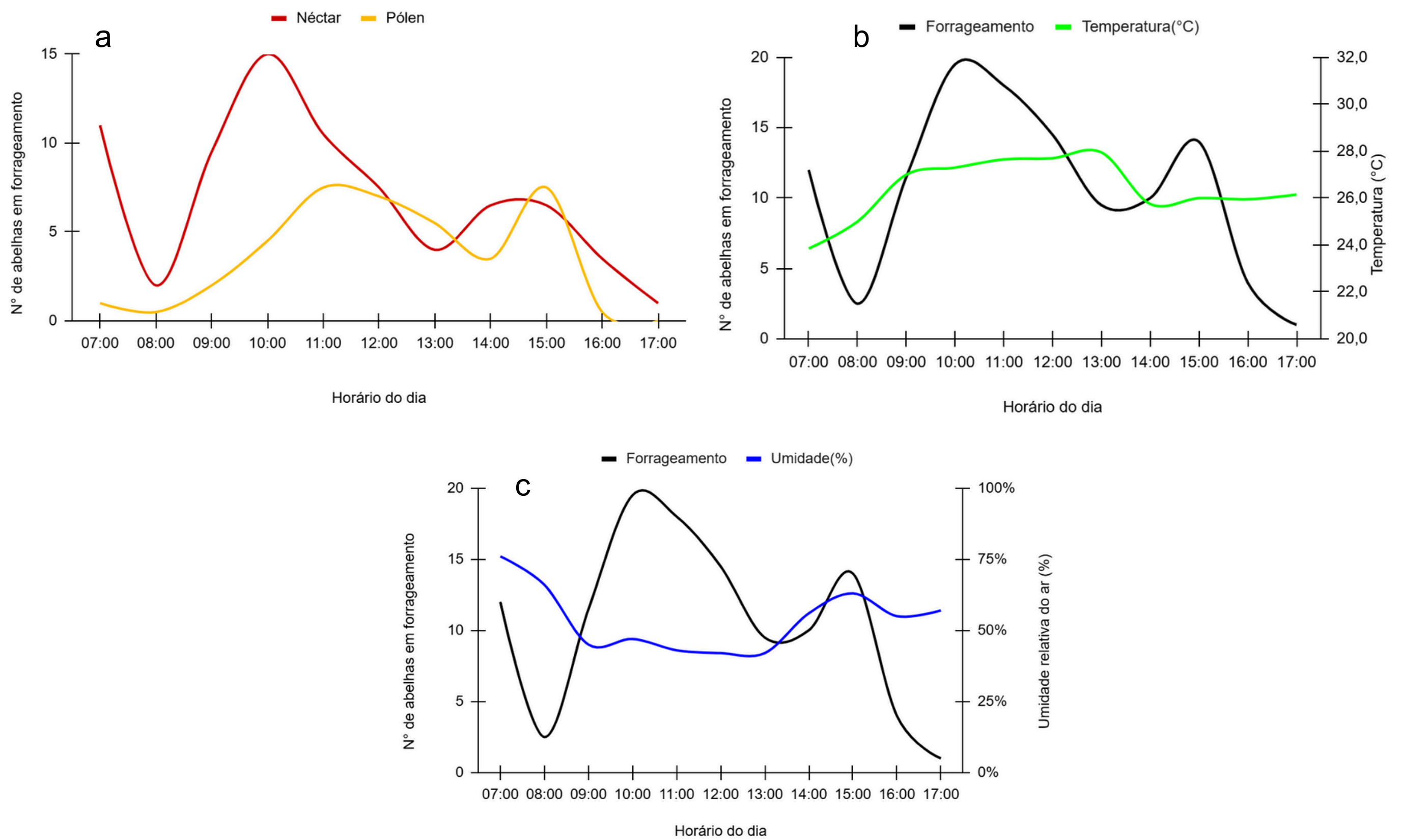


Fig. 8 Seasonal foraging behavior of *M. scutellaris* during winter 2024. a) Foraging patterns for nectar/water (red line) and polle/resins (yellow lines); b) Foraging patterns (black line) in relation to temperature fluctuations(green line); c) Foraging pattern (black line) in relation to variations in air humidity (blue line).