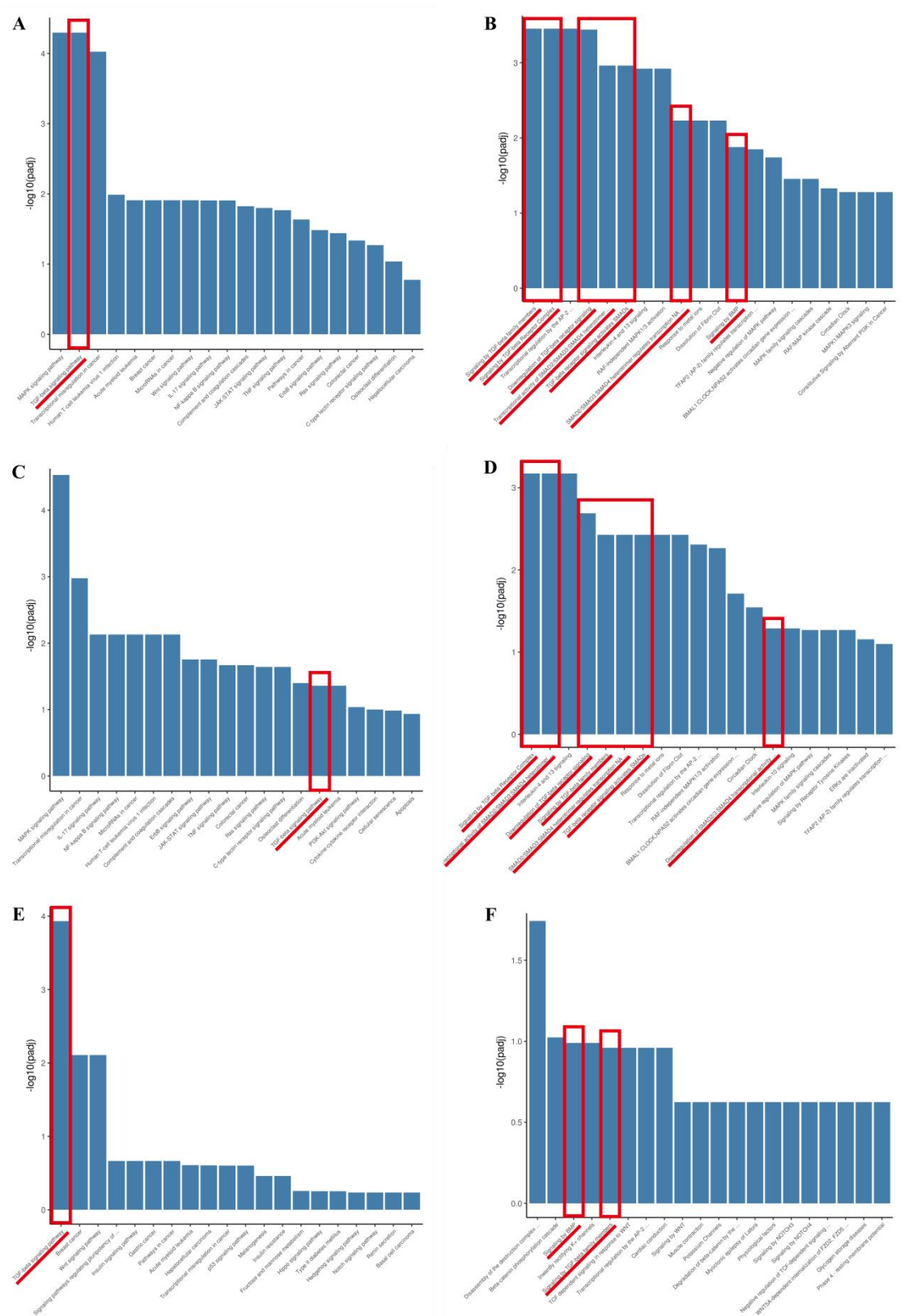
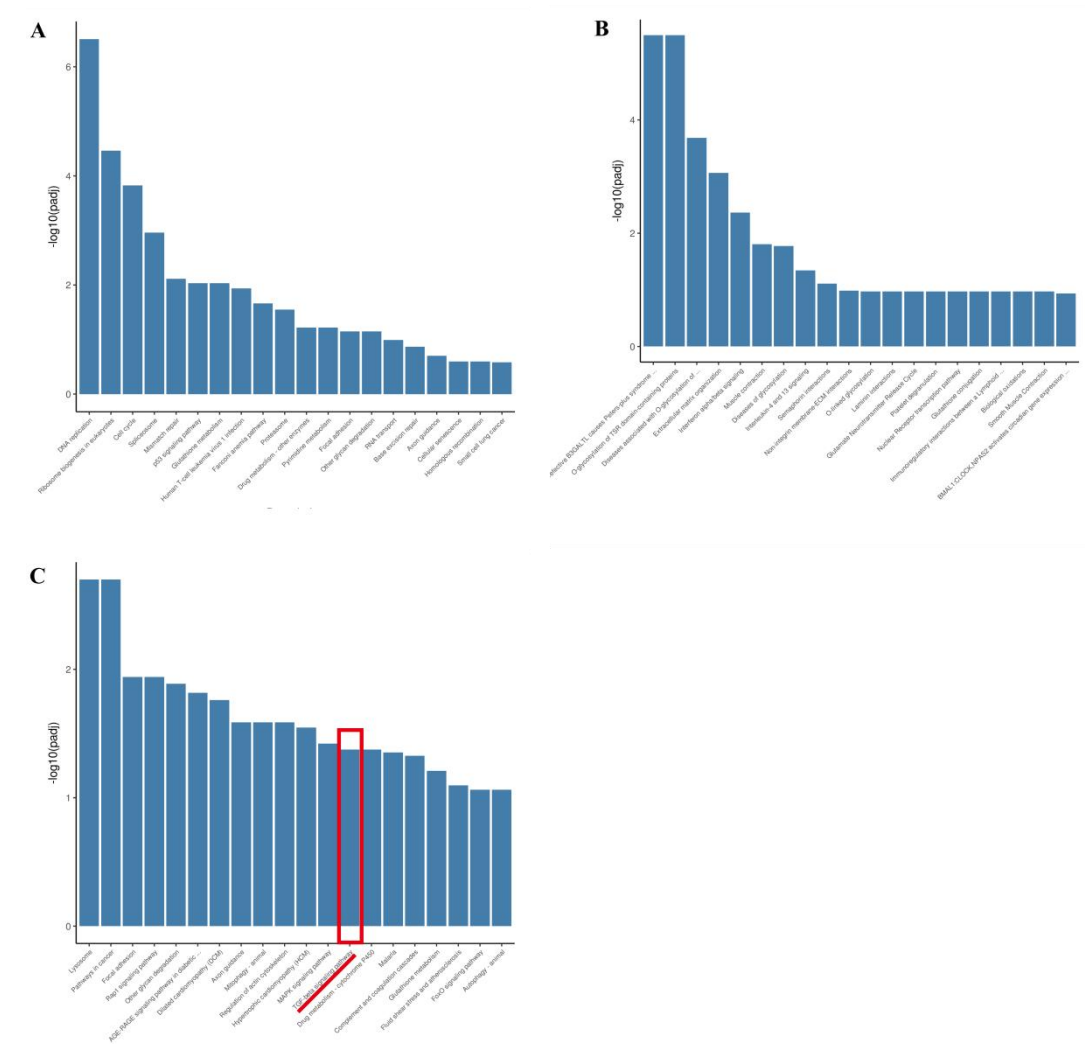


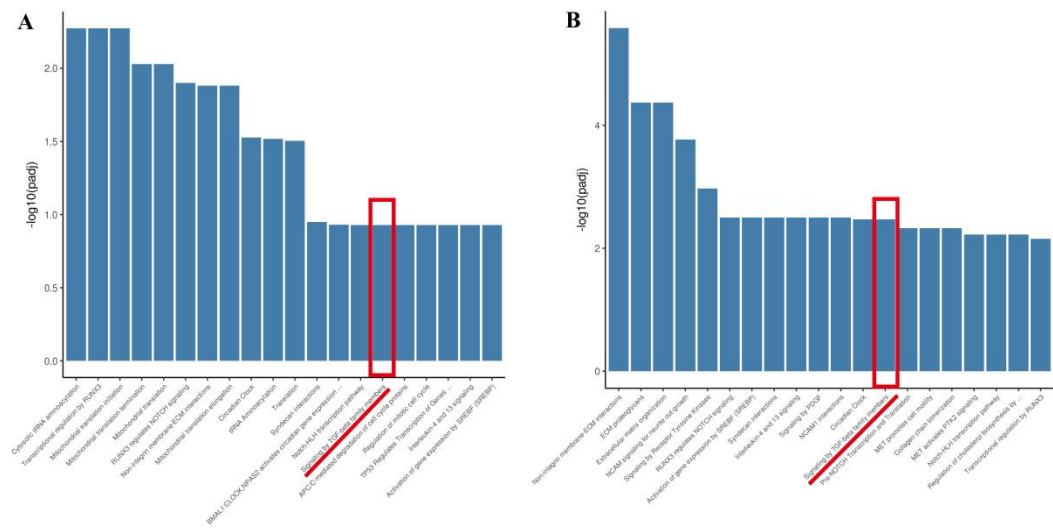
Supplementary Figure S1. Functional enrichment analysis of differentially expressed genes (DEGs) during 0–2 hours of reprogramming



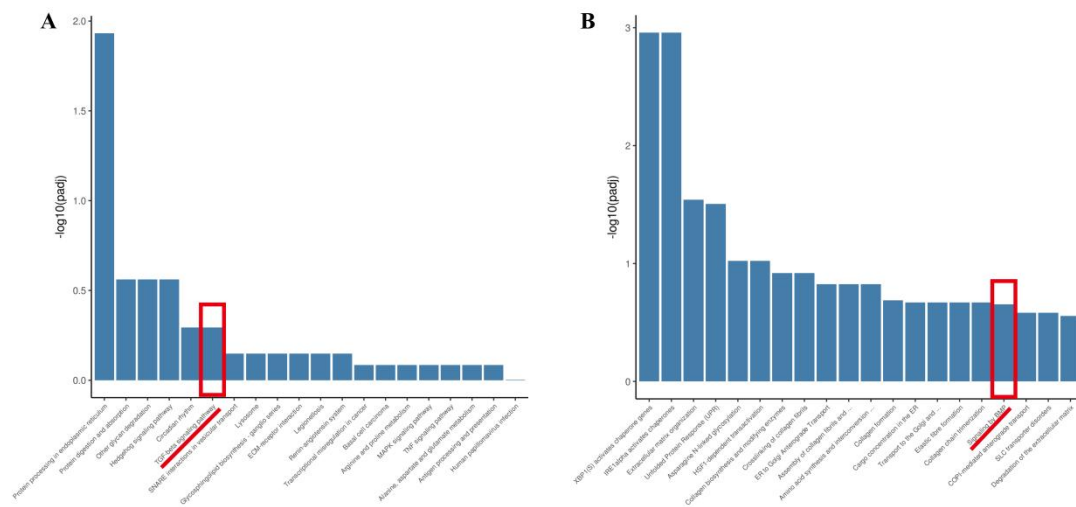
Supplementary Figure S2. Functional enrichment analysis of DEGs during 2–4 hours of reprogramming



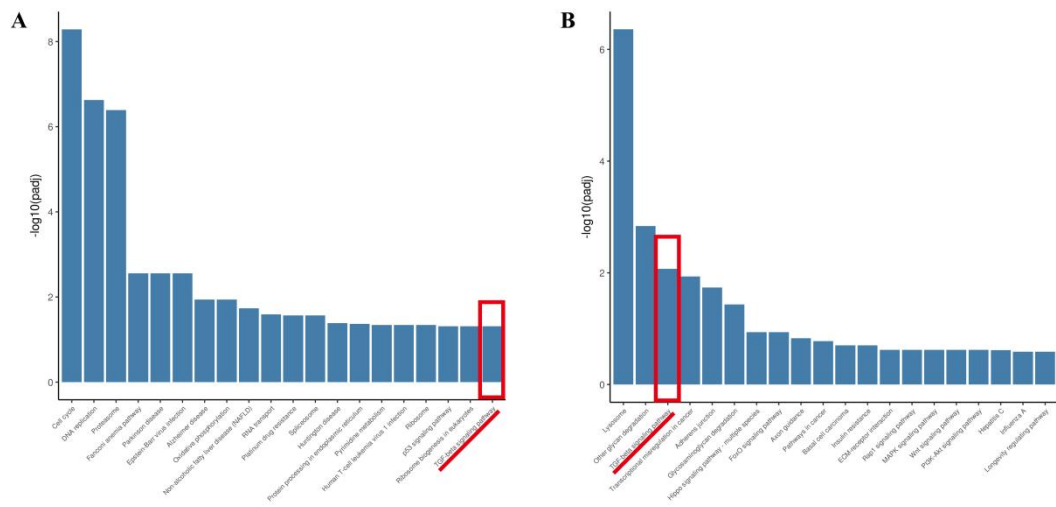
Supplementary Figure S3. Functional enrichment analysis of DEGs during 4–12 hours of reprogramming



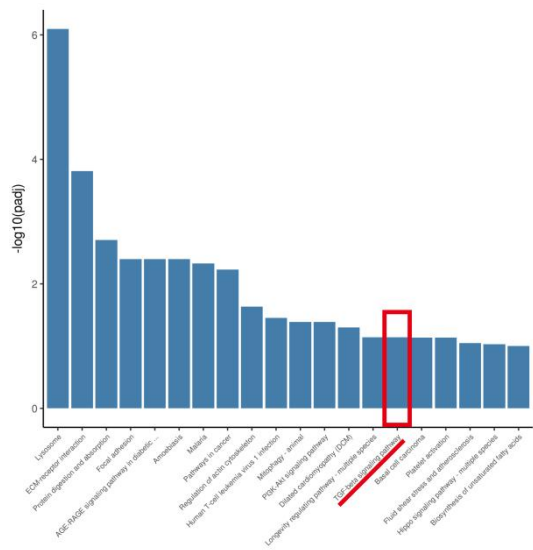
Supplementary Figure S4. Functional enrichment analysis of DEGs during 12–24 hours of reprogramming



Supplementary Figure S5. Functional enrichment analysis of DEGs during 24–48 hours of reprogramming

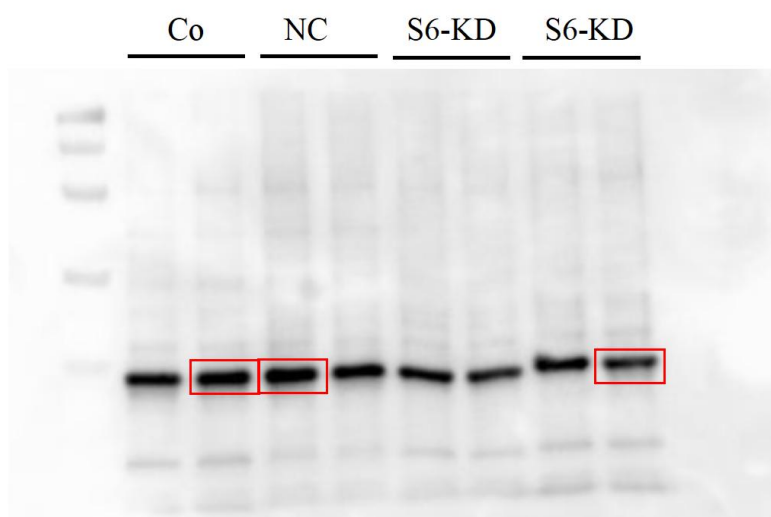
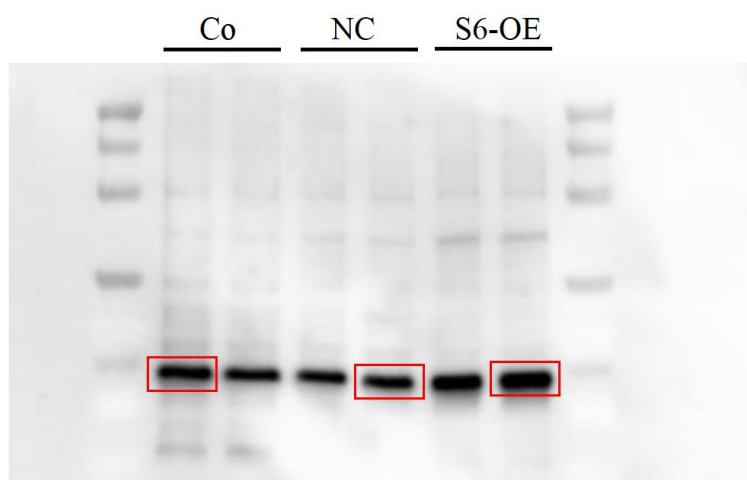


Supplementary Figure S6. Functional enrichment analysis of DEGs during 48–72 hours of reprogramming

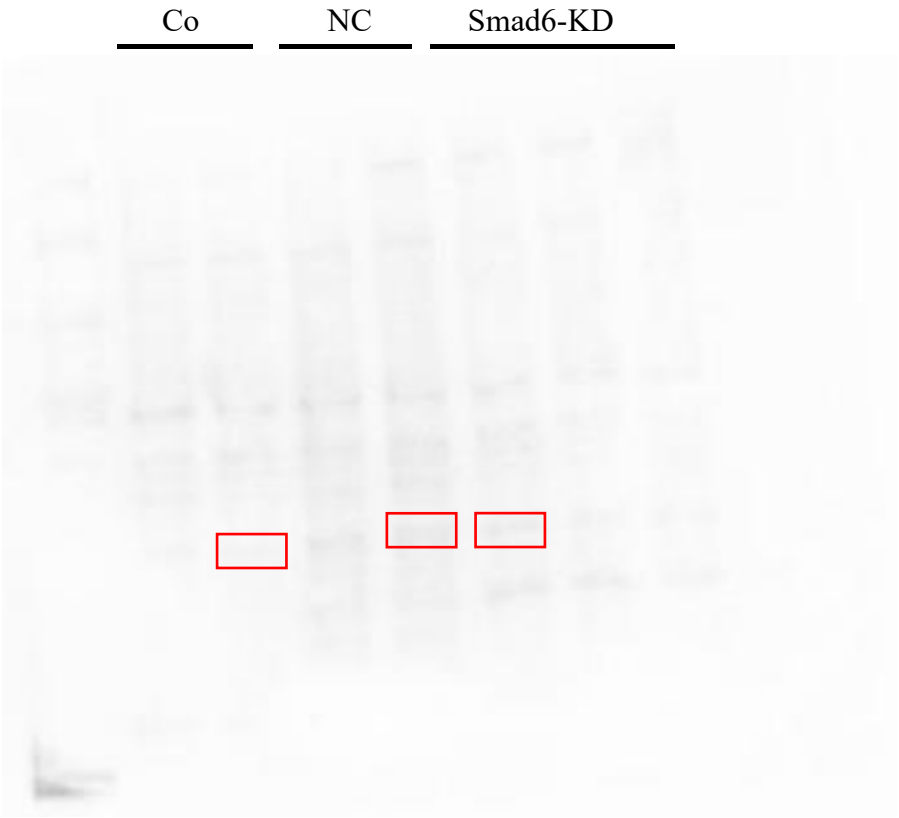
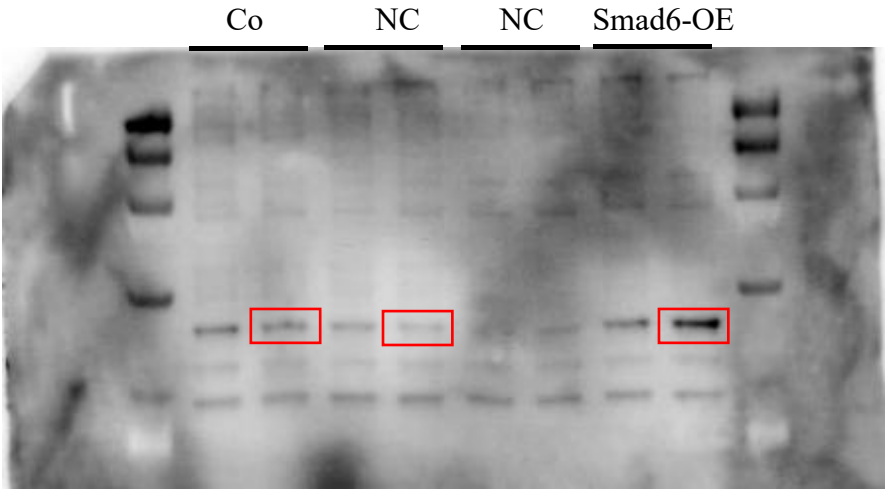


Supplementary Figures S7-S15. Full-length blots.

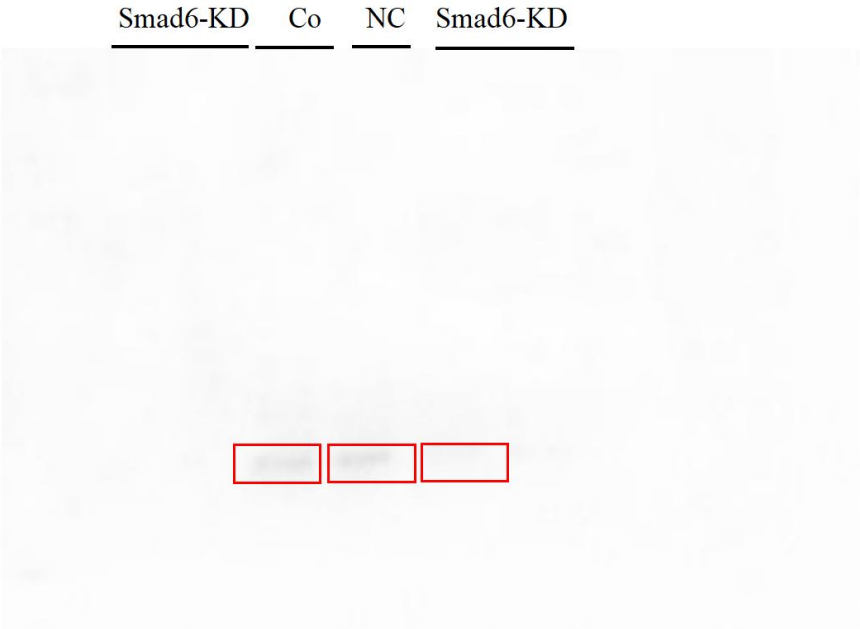
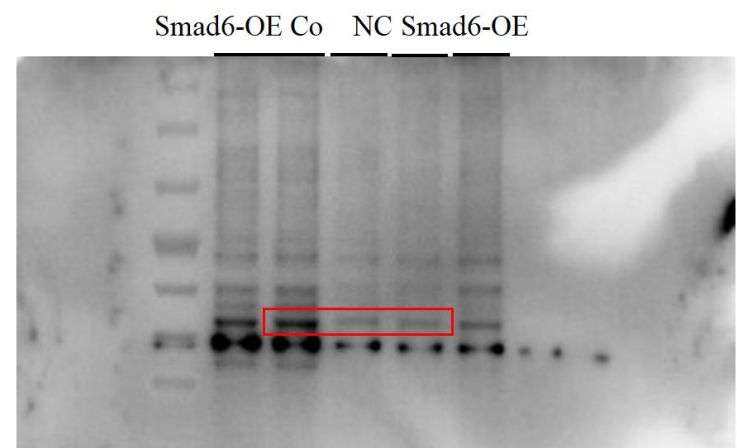
Supplementary Figure S7. Full-length blot of Smad6



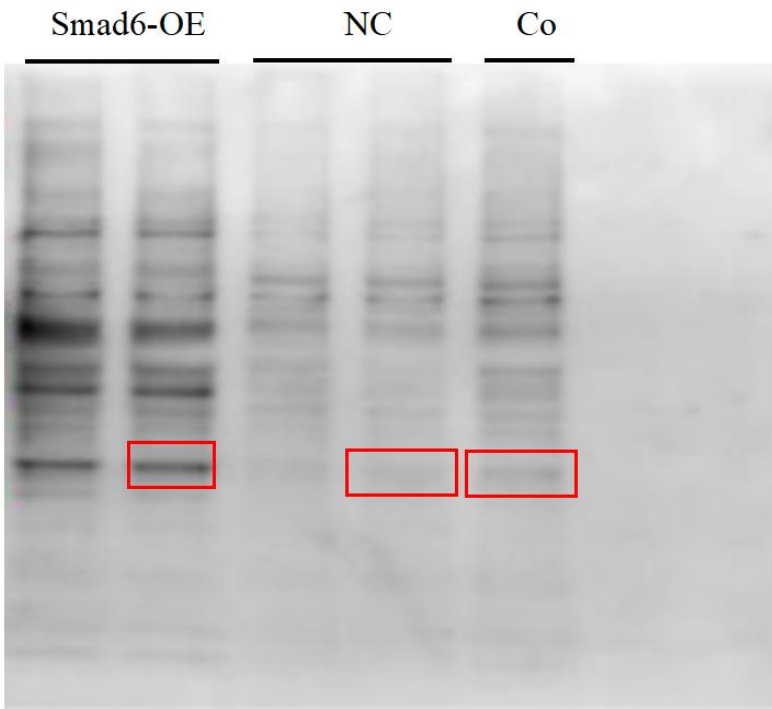
Supplementary Figure S8. Full-length blot of Nanog



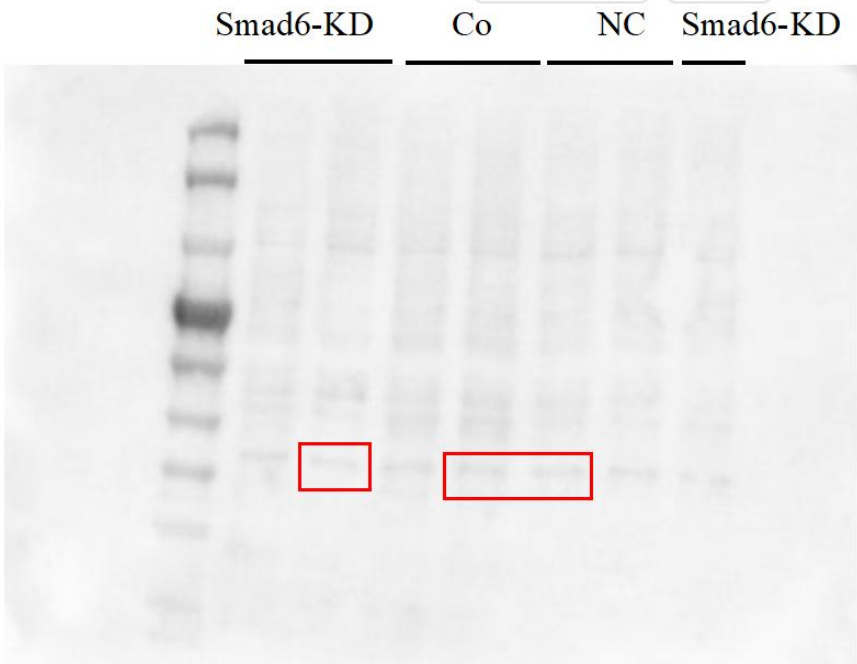
Supplementary Figure S9. Full-length blot of Oct4



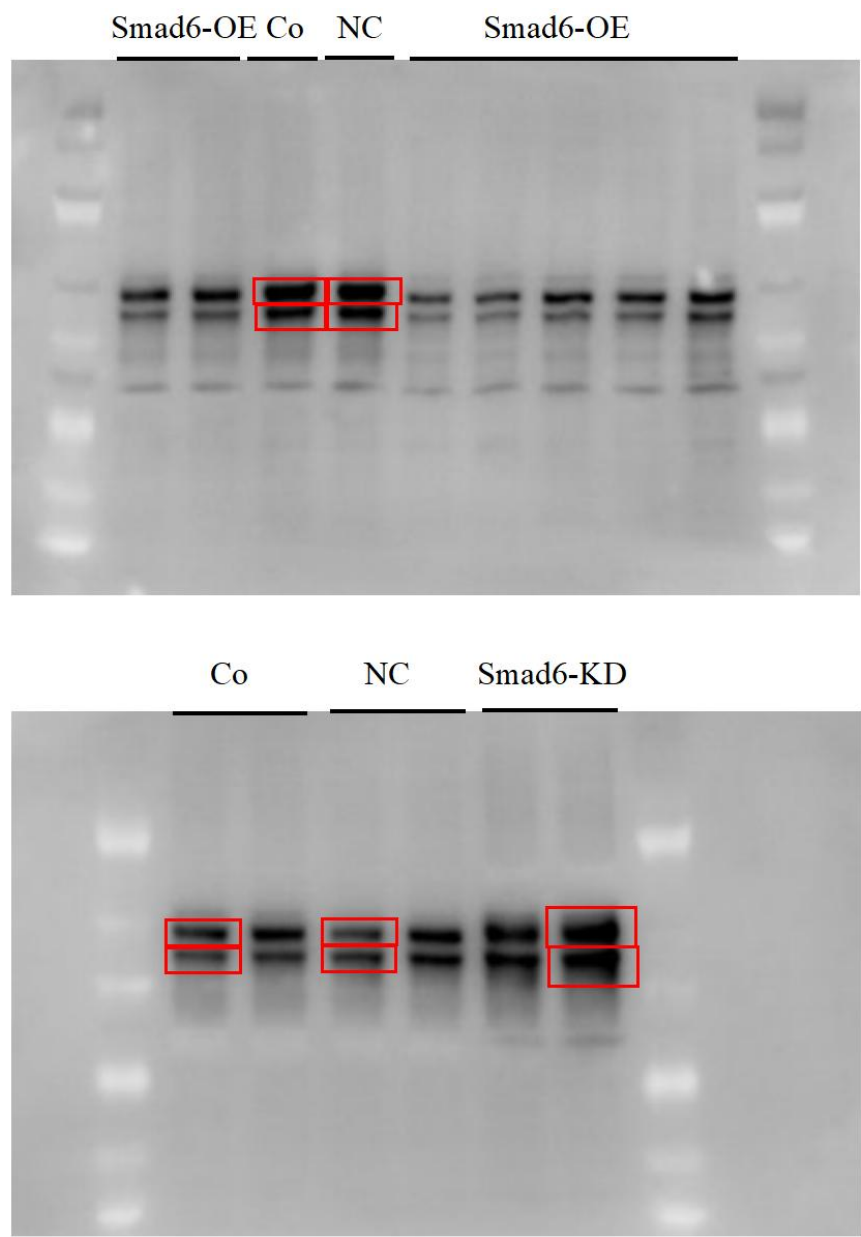
Supplementary Figure S10. Full-length blot of Sox2



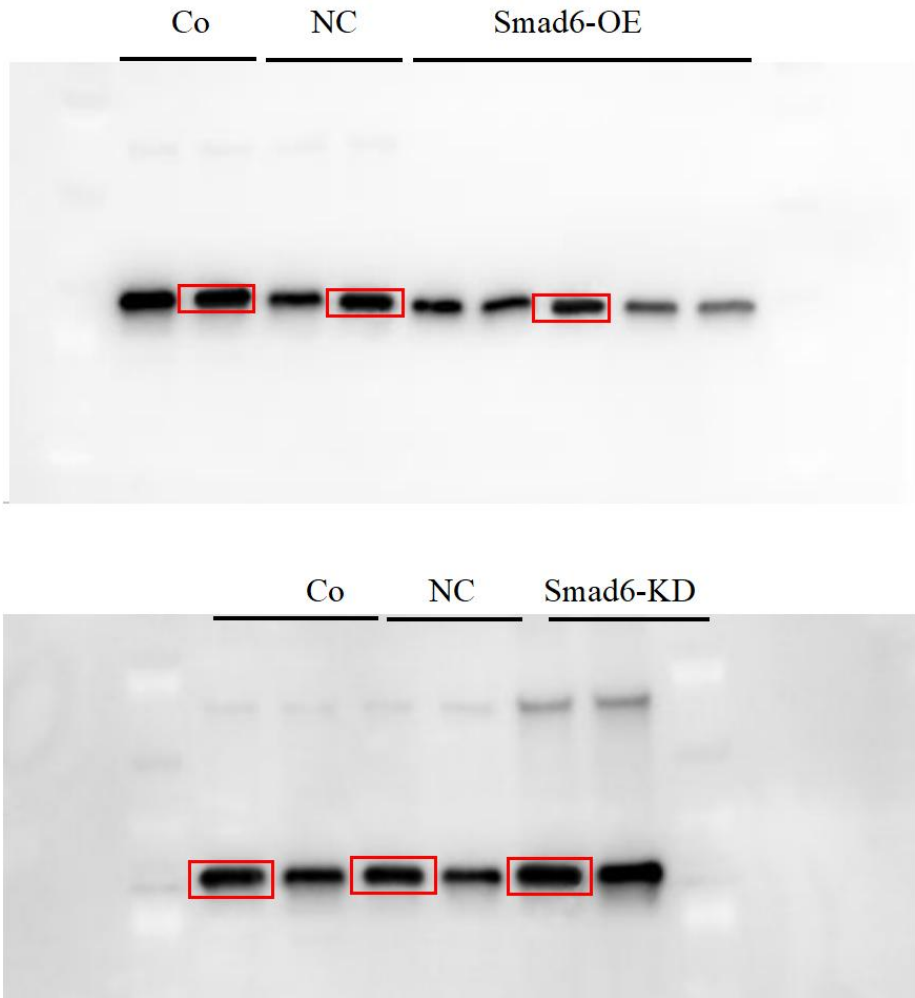
[\[A\] 提取文字](#) [更多 ▾](#)



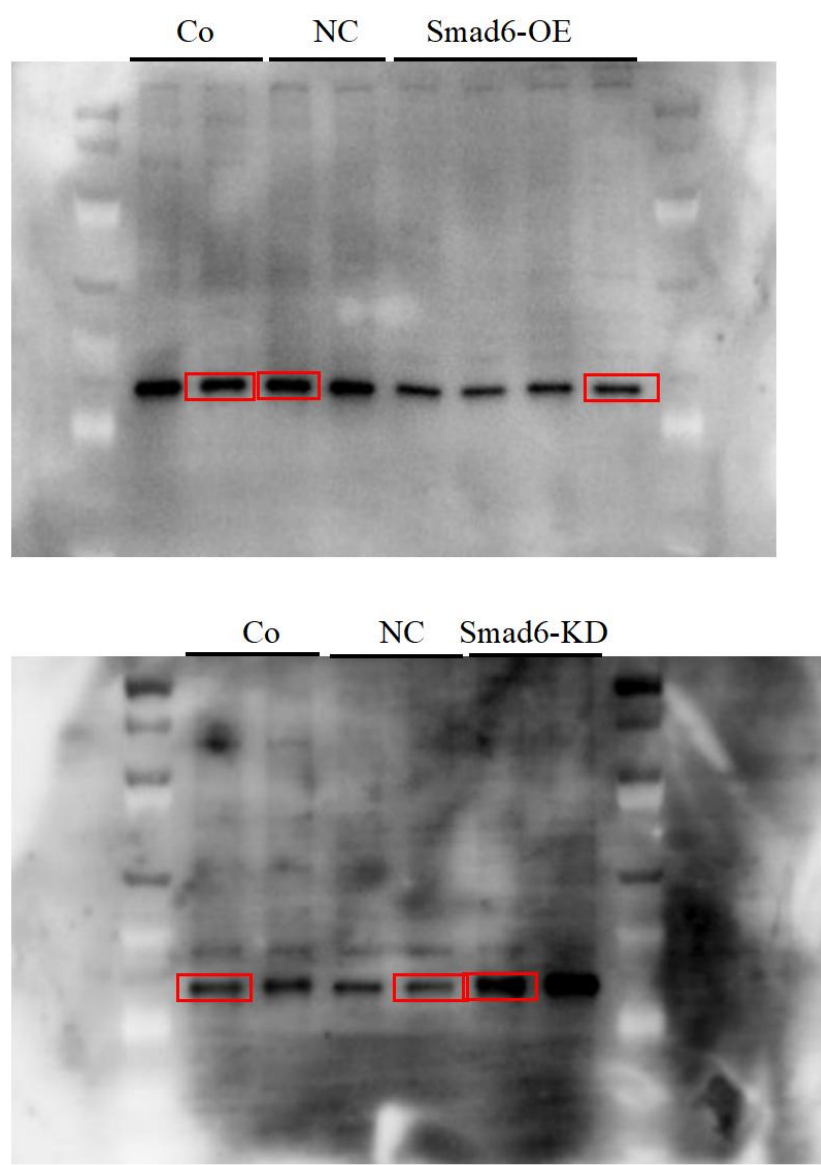
Supplementary Figure S11. Full-length blot of Smad2/3



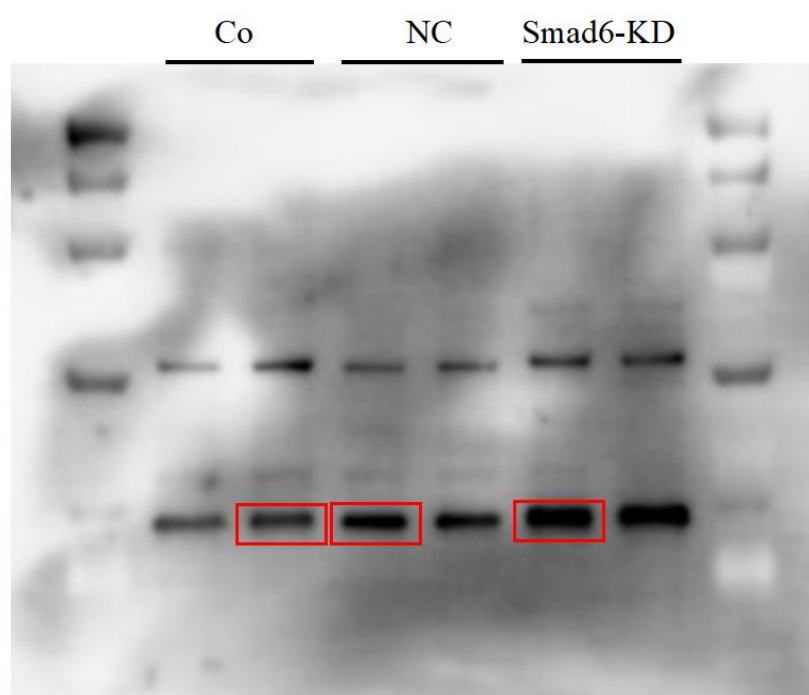
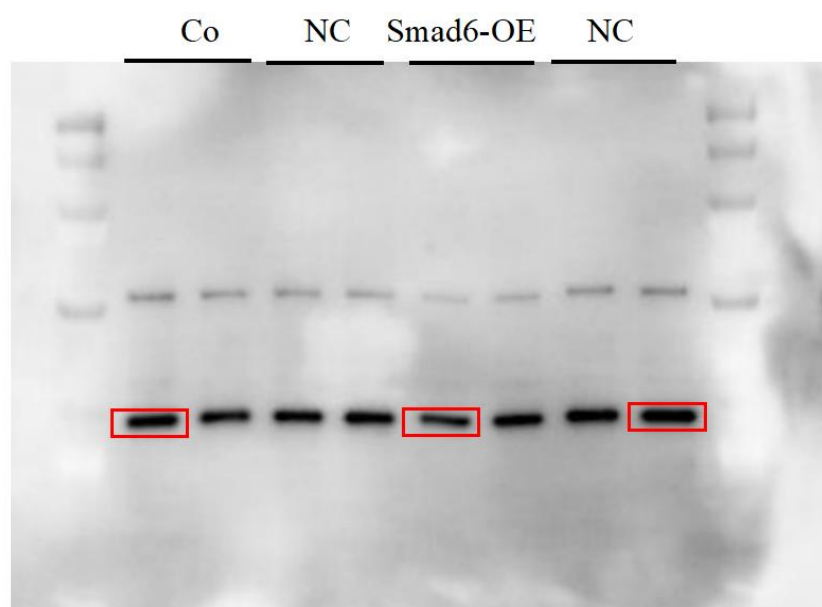
Supplementary Figure S12. Full-length blot of P-Smad2



Supplementary Figure S13. Full-length blot of P-Smad3



Supplementary Figure S14. Full-length blot of Smad4



Supplementary Figure S15. Full-length blot of Smad1/5/8

