

Figure S1 Undesired part of callus for suspension culture initiation. A & B Compact pieces of callus that produce a non-embryogenic browning suspension culture. **C** Browning of non embryogenic culture within one month of culture initiation.

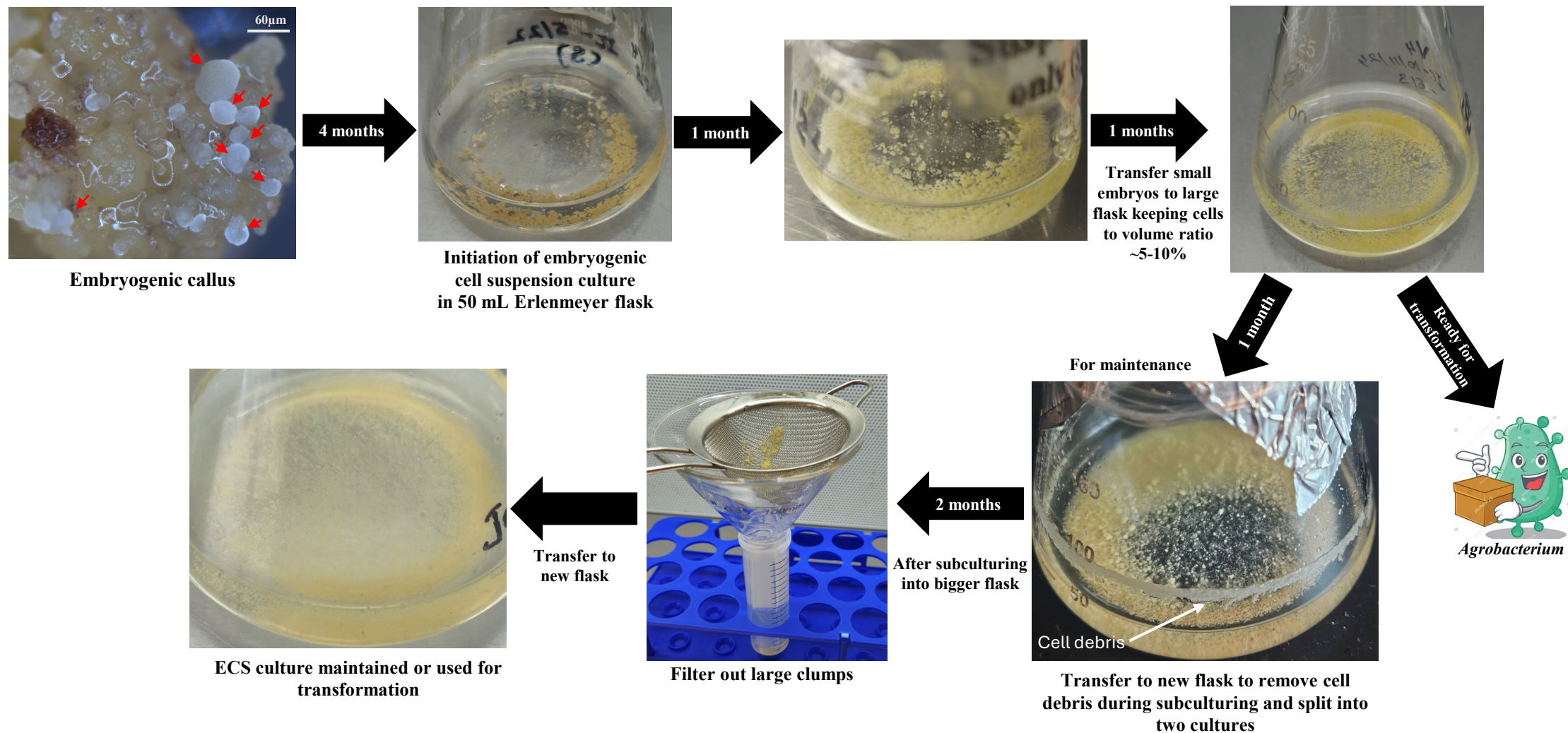


Figure S2: ECS establishment and maintenance

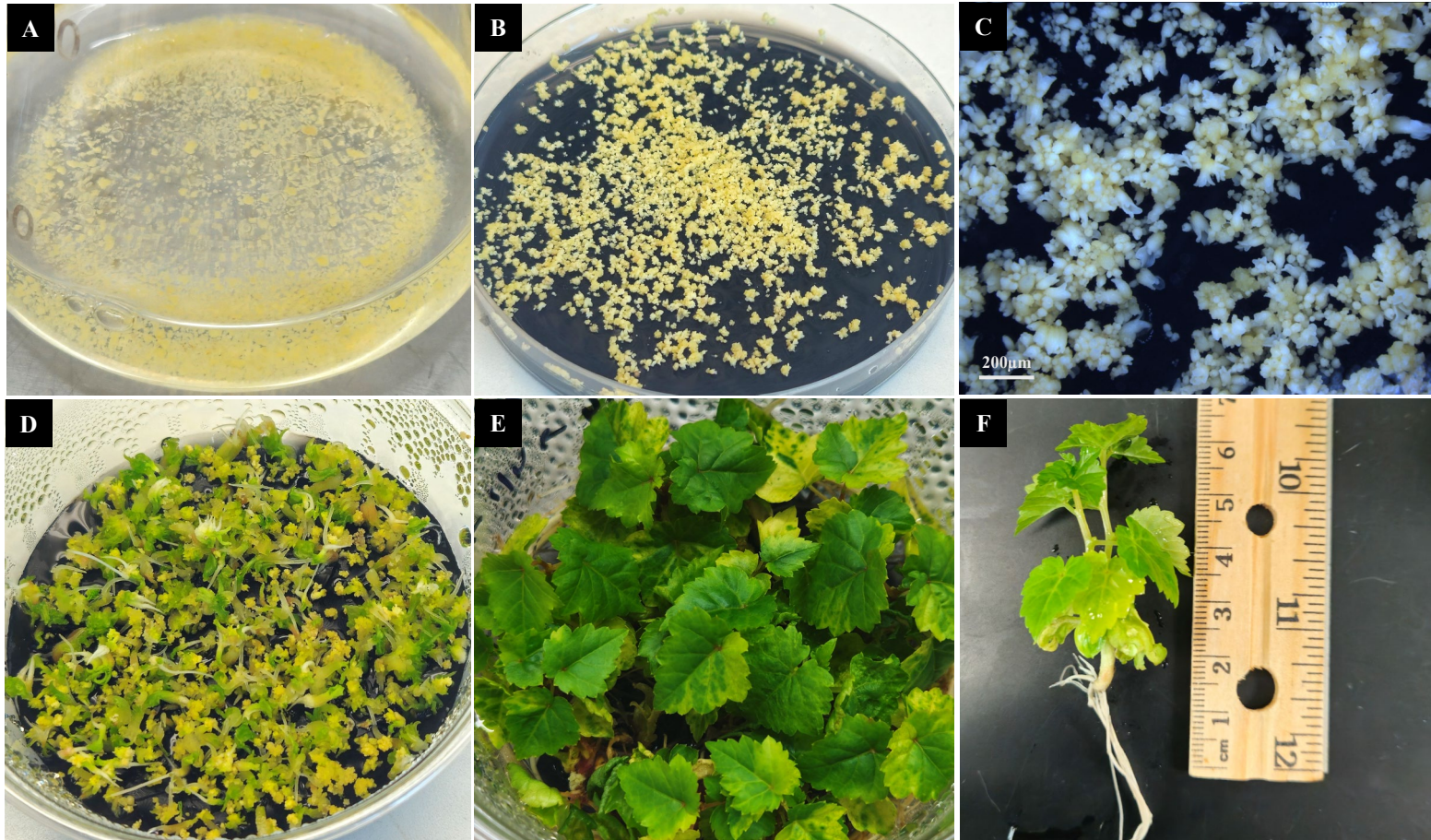


Figure S3 Development of microvine plants from non-transformed ECS to check regeneration. **A** Embryogenic cell suspension culture. **B** Suspension cells (~1 mL) 50 days post on EDM semi-solid media. **C** Magnified view of somatic embryos. **D** Growth of mature somatic embryos 15 days after subculturing on SSM medium. **E** Growing plantlets 20 days after subculturing on SSM-I. **F** A regenerated plant ready for transfer to soil.

SSM-I (no GA₃)



SSM-I + GA₃ (10 mg/L)



Figure S4 Transgenic plant development improves with the addition of GA₃.

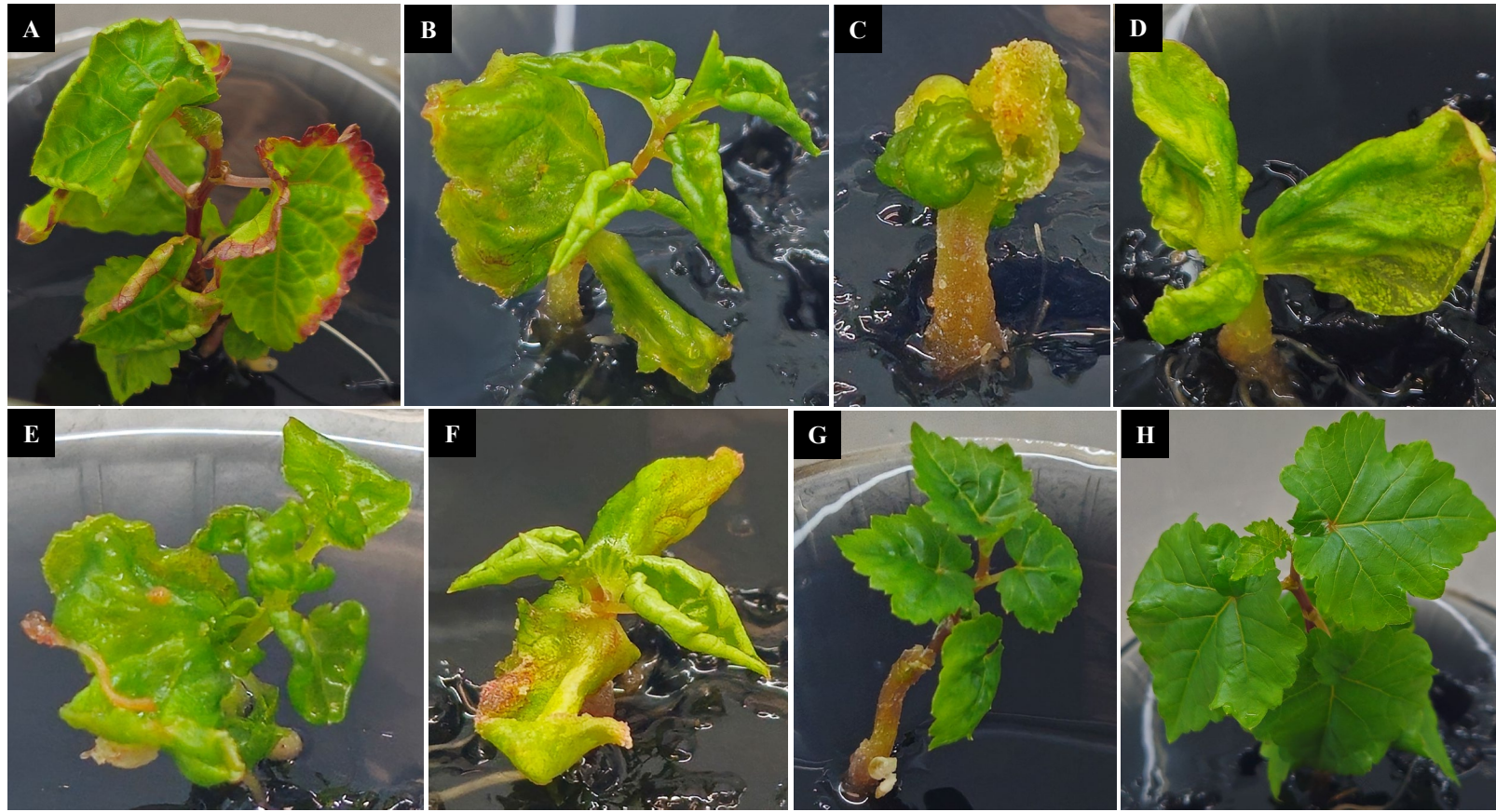


Figure S5 A-F Transgenic shoots showing abnormal morphology and growth. **G** and **H** Normally growing shoots.