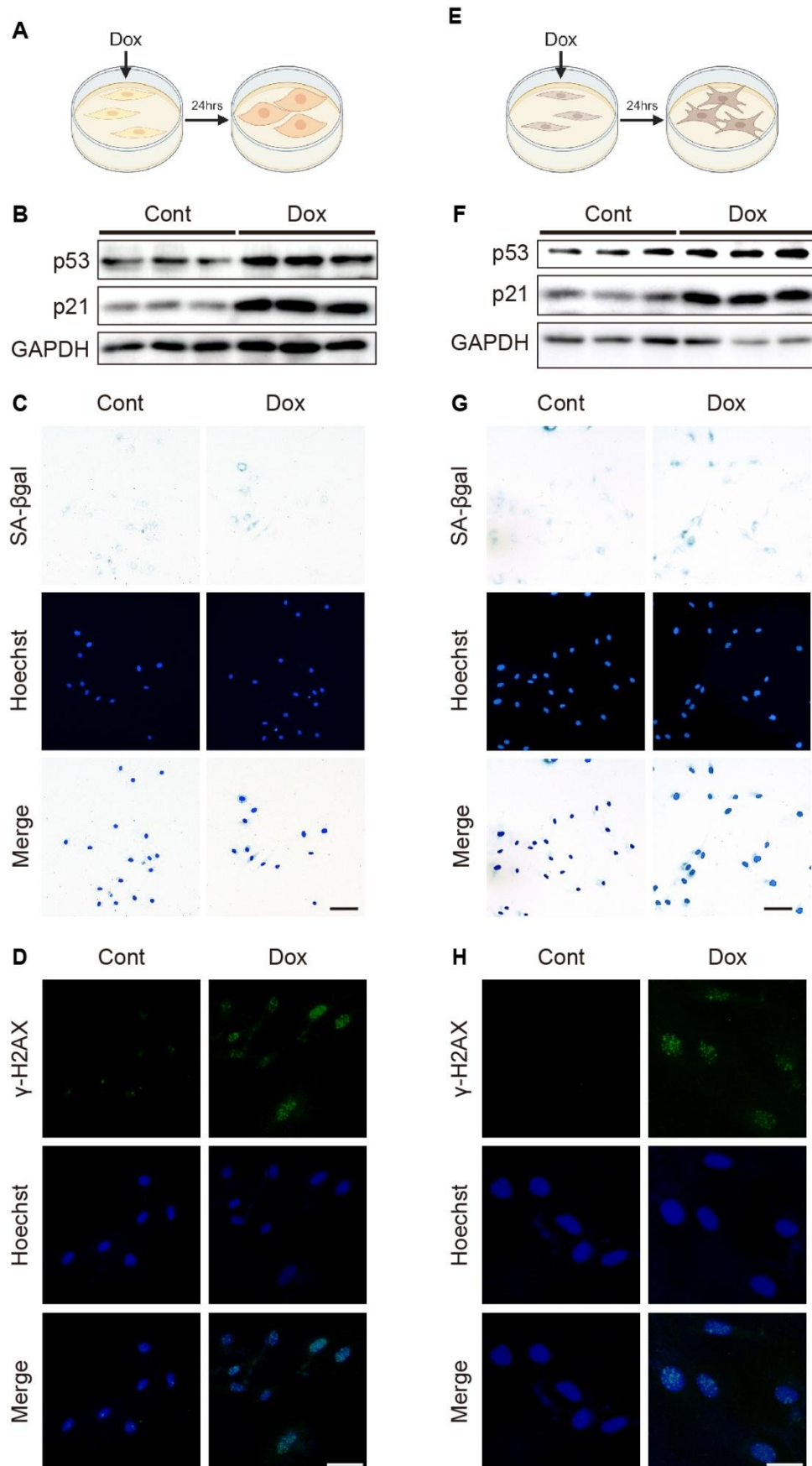


Supplementary Data

The Matricellular Protein CCN5 (WISP2) inhibits Cellular Senescence in Cardiac Myocytes and Fibroblasts

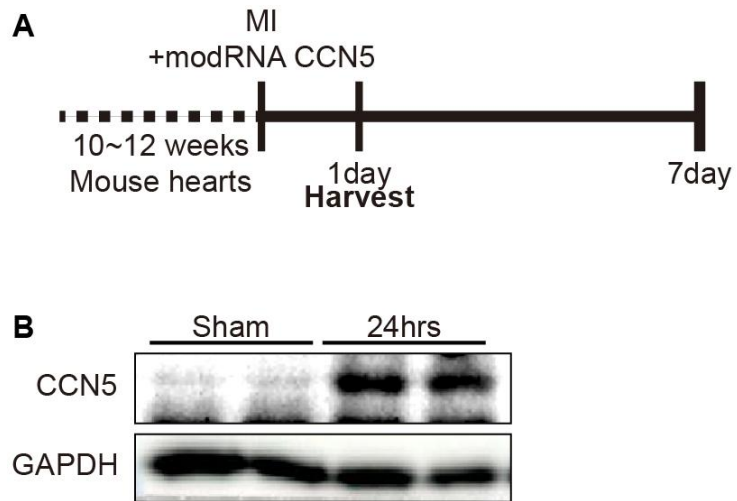
Yongjoon Jo, Miyoung Lee, Sung Bin Kim, Tae Hwan Kwak, Dongtak Jeong, Seung Pil Jang
and Woo Jin Park

Supplementary Figure 1.



Doxorubicin (Dox) Induces Cellular Senescence in Cardiac Myocytes and Fibroblasts. (A) An experimental scheme is shown (created using Biorender). (B) H9c2 cardiac myocytes were treated with Dox. Cell lysates were immunoblotted for senescence marker proteins p53, p21 and GAPDH. Panel B is a composite from separate blots. The full-length blots are presented in Supplementary information. (C) H9c2 cells were stained for SA- β -gal activity. (D) H9c2 cells were immunostained with antibodies against γ H2AX (green) and counter-stained with Hoechst (blue). (E) An experimental scheme is shown (created using Biorender). (F) RCFs were treated with Dox. Cell lysates were immunoblotted for senescence marker proteins p53, p21 and GAPDH. Panel F is a composite from separate blots. The full-length blots are presented in Supplementary information. (G) RCFs were stained for SA- β -gal activity. (H) RCFs were immunostained with antibodies against γ H2AX (green) and counter-stained with Hoechst (blue). Scale bar: 50 μ m.

Supplementary Figure 2.



ModRNA-CCN5 was expressed via intramyocardial injection (A) An experimental scheme is shown. (B) Heart extract was immunoblotted for CCN5 and GAPDH. Panel B is a composite from separate blots. The full-length blots are presented in Supplementary information.

Supplementary Figure 3. Western Blots Uncropped Images

Protein ladder information: PageRuler™ Prestained Protein Ladder, 10 to 180 kDa (CST 26616)

Figure 1B

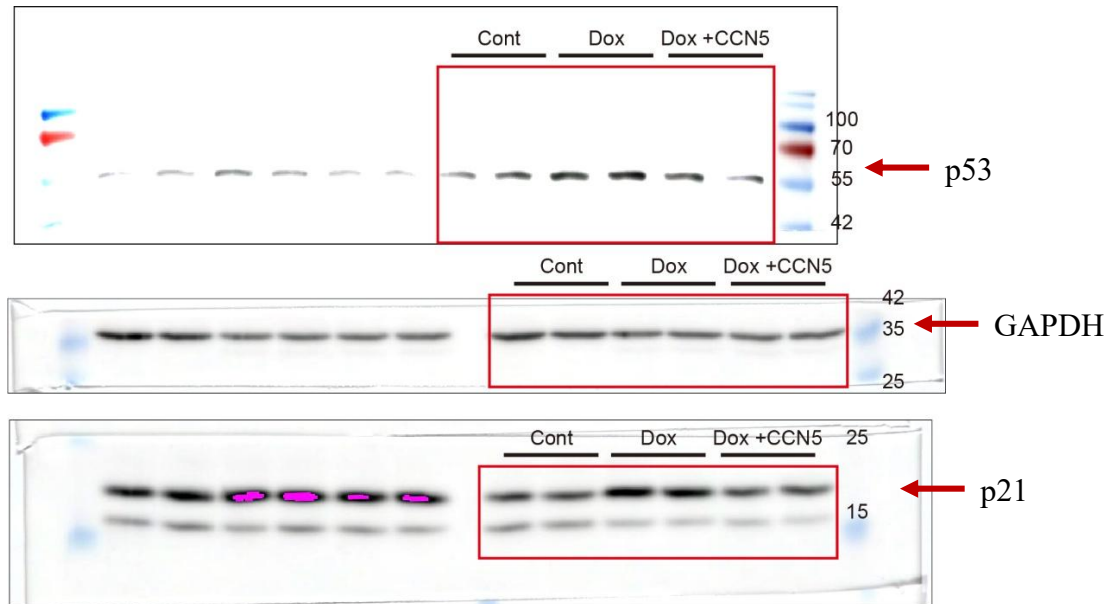


Figure 2B

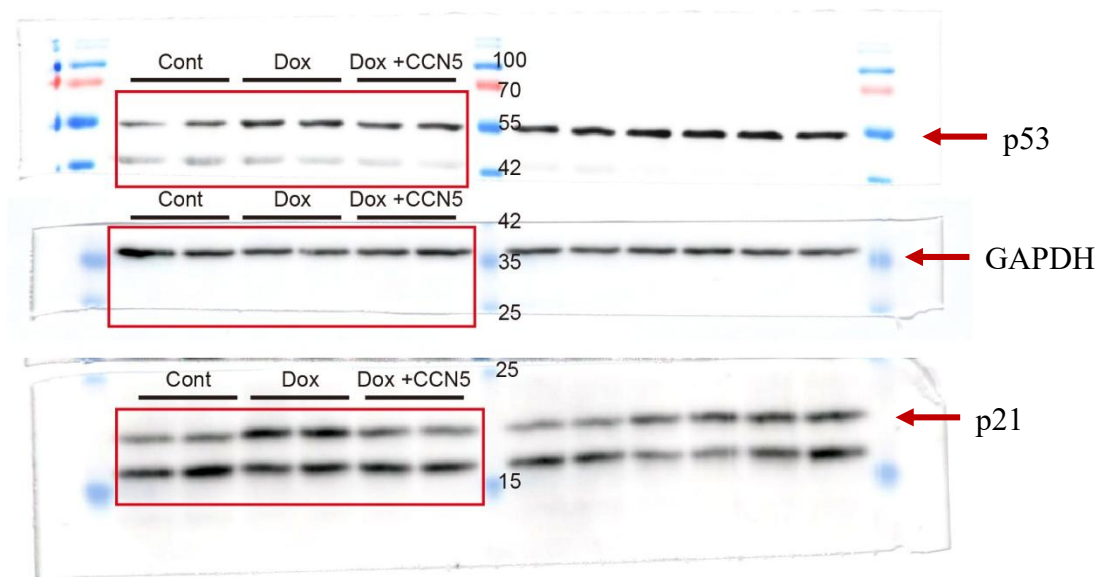


Figure 3B

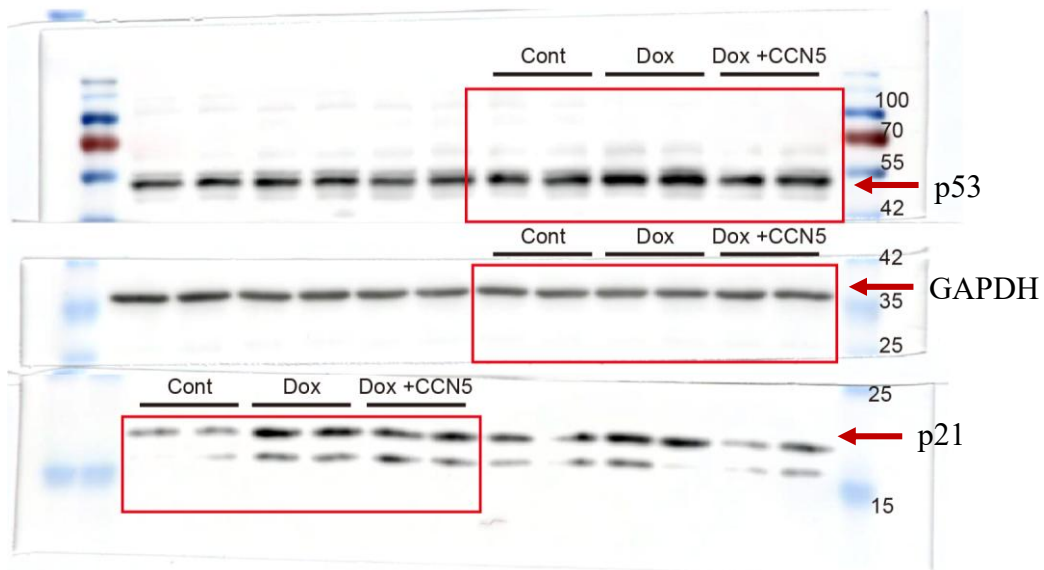


Figure 4B

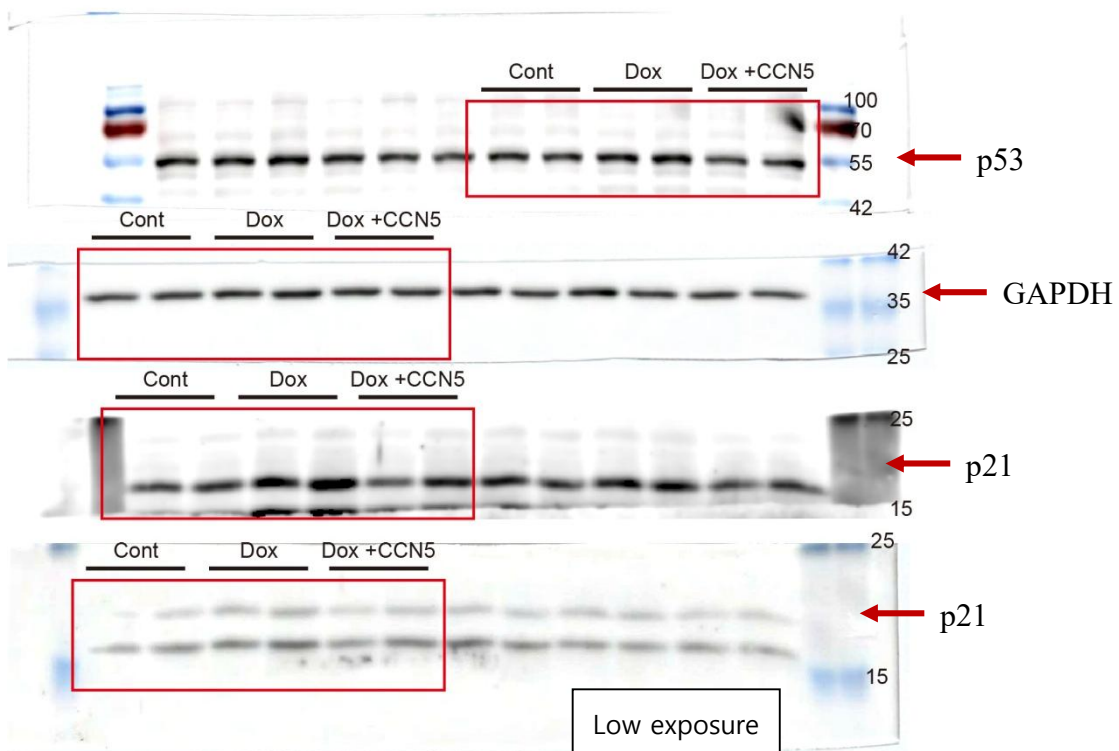


Figure 5B

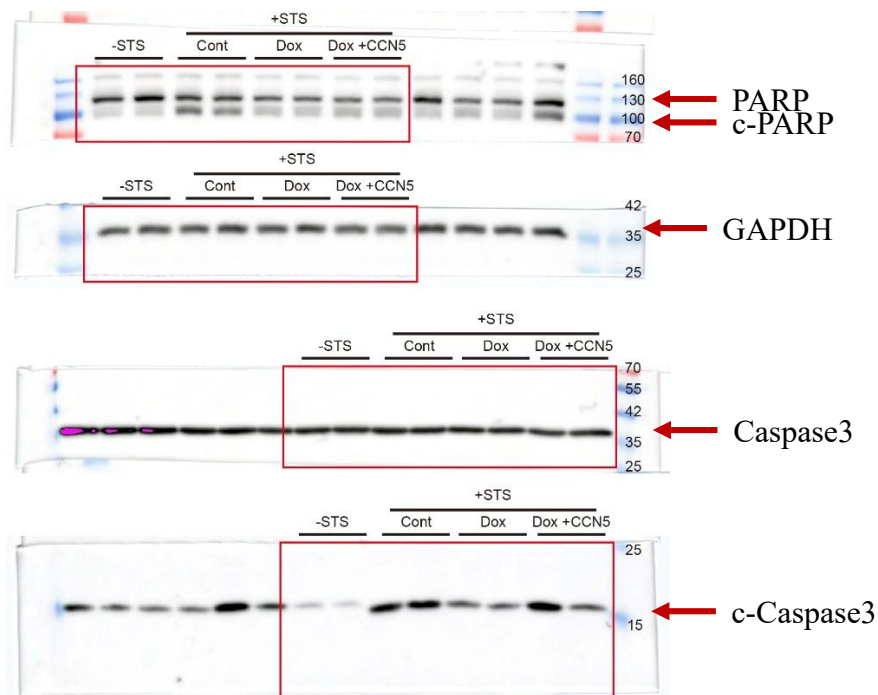


Figure 5E

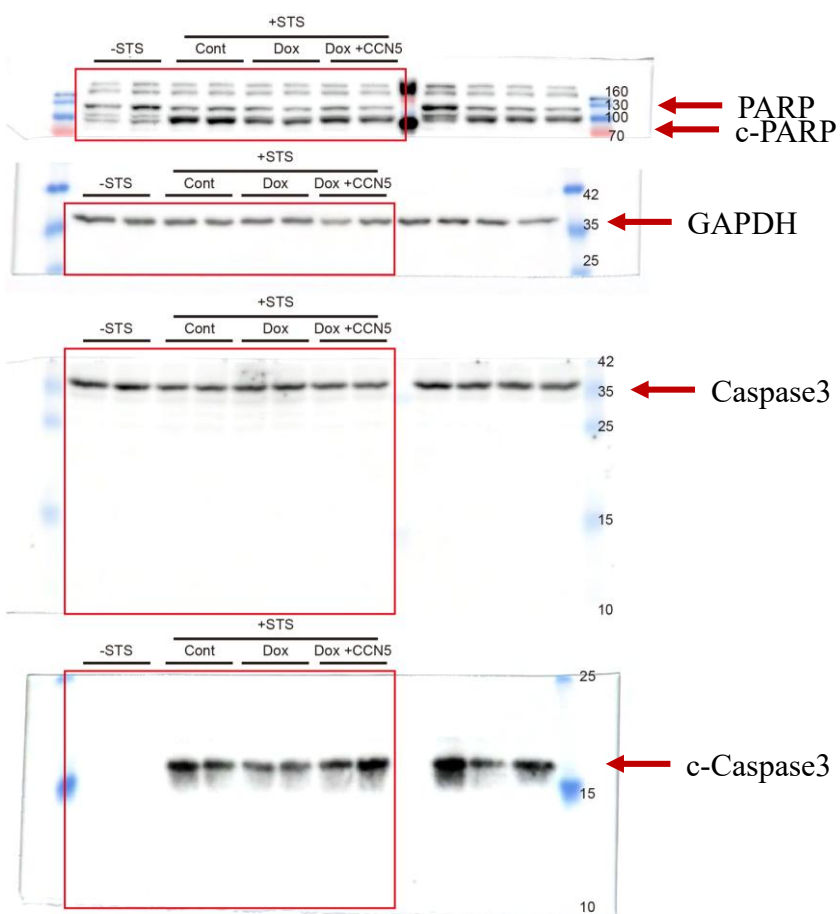
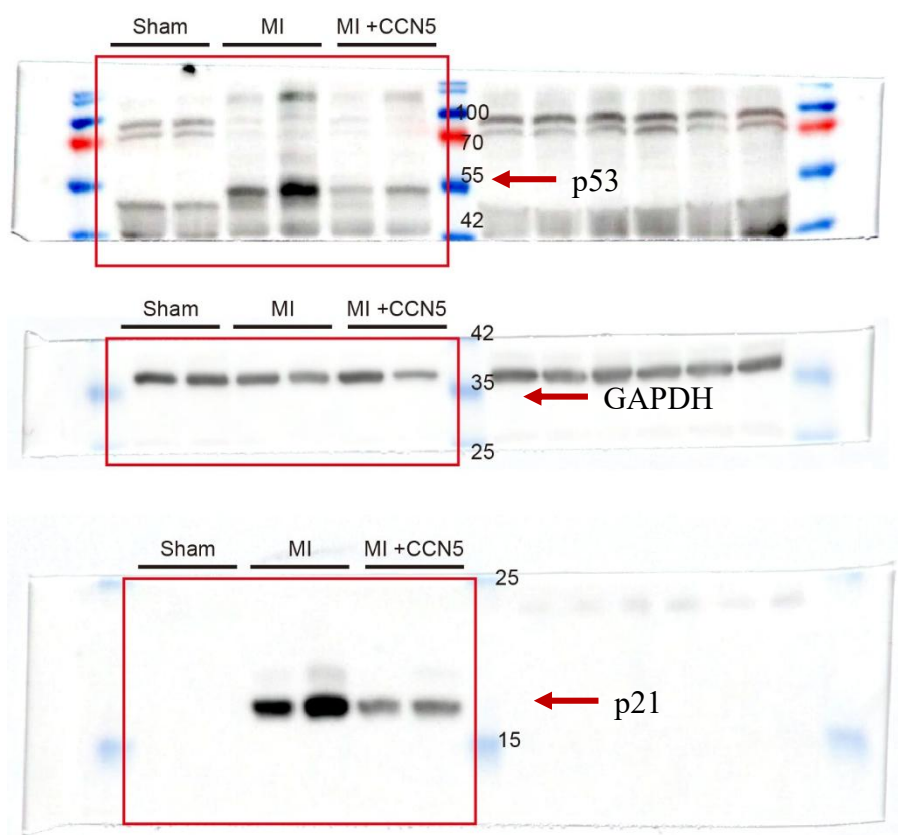
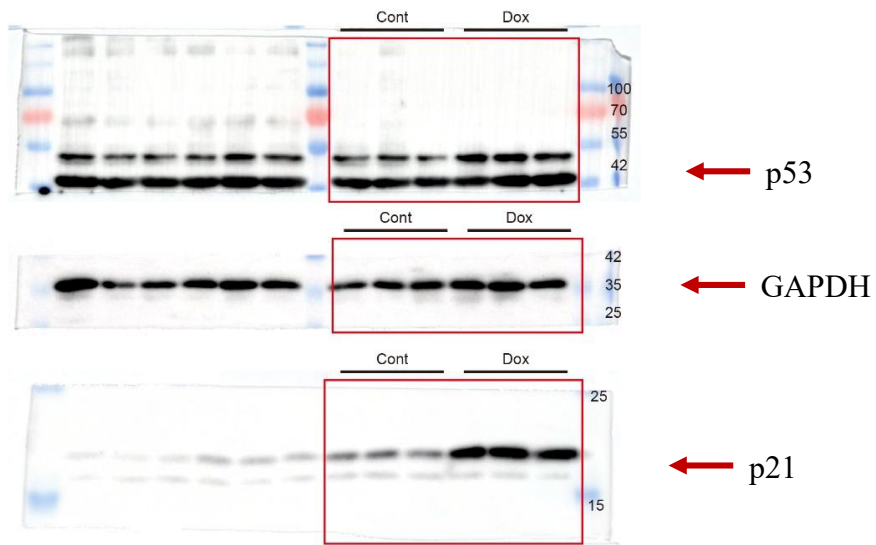


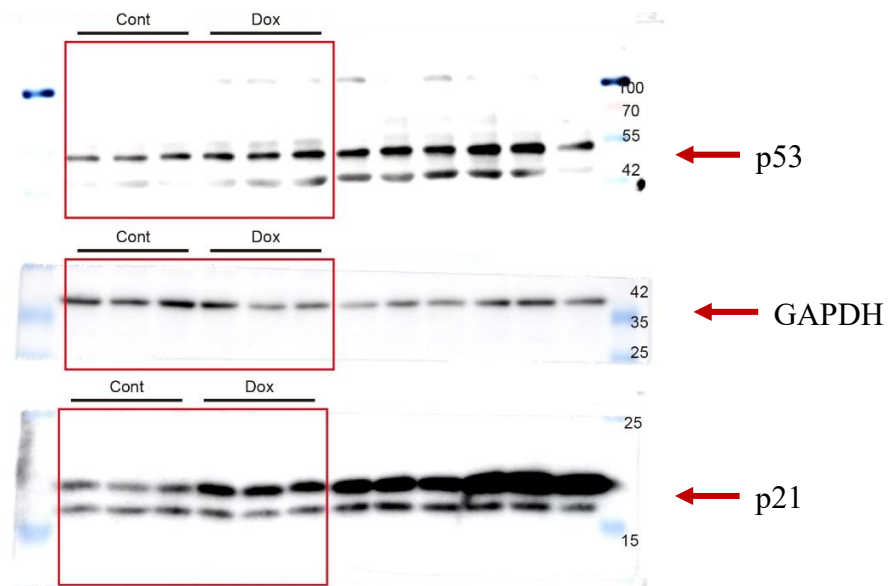
Figure 6B



Supplementary Figure 1B



Supplementary Figure 1F



Supplementary Figure 2B

