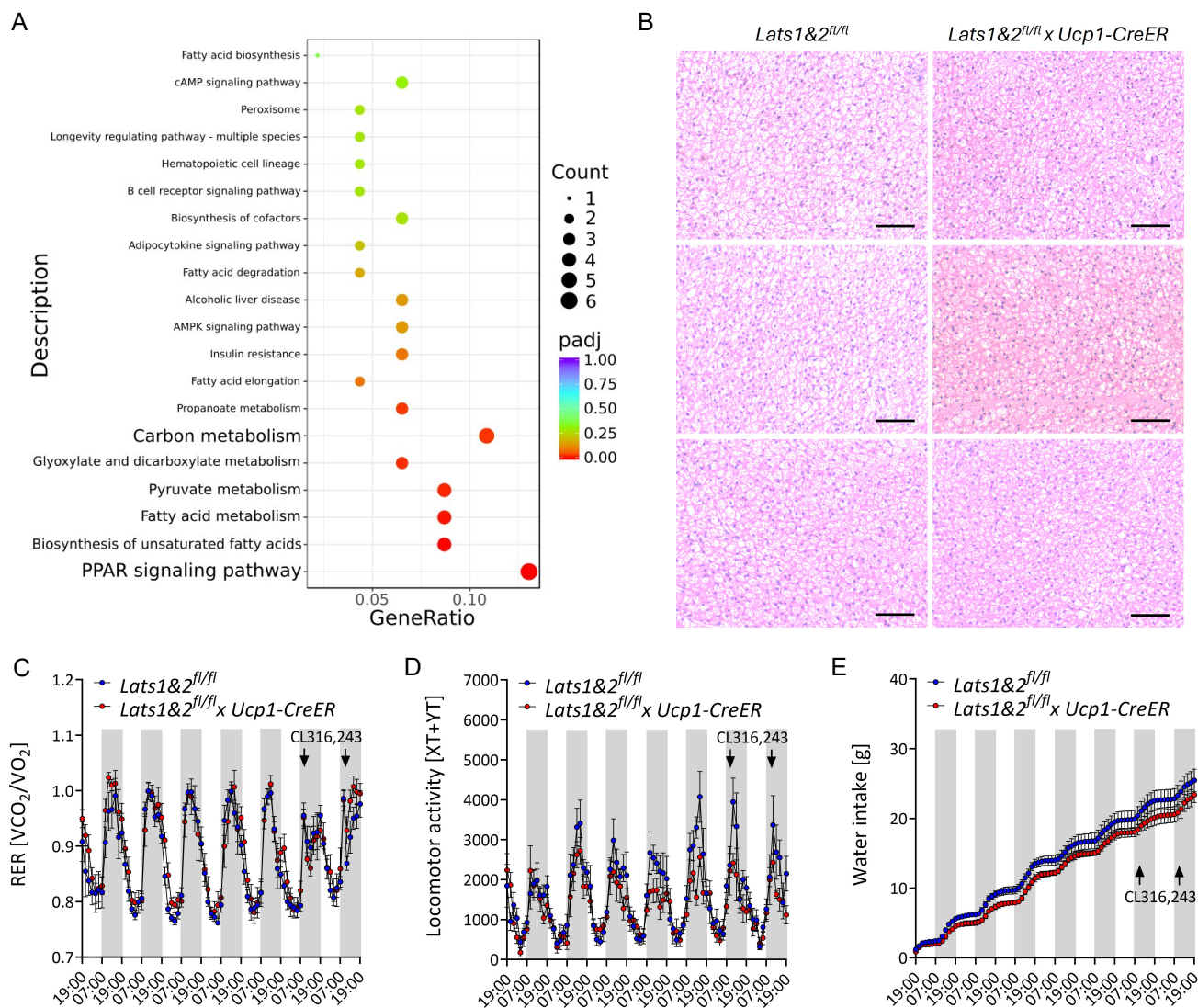


Supplemental Figure 1



**Supplemental Figure 1: Effect of Lats1&2 deletion in Ucp1+ cells on whole-body and adipose tissue metabolic phenotype.** (A) Enrichment of pathways identified by KEGG pathway analysis on downregulated DEGs in iBAT from cold-acclimated Lats1&2 BAT-KO mice and littermate controls. (B) Representative H&E staining of iBAT from cold-acclimated Lats1&2 BAT-KO mice and littermate controls. Scale bar, 100  $\mu$ m. (C) Respiratory exchange ratio (RER), (D) locomotor activity, and (E) cumulative water intake in room temperature-acclimated Lats1&2 BAT-KO mice and littermate controls ( $n = 6$ ), measured by metabolic cages.