

Fig.s1 Changes in the serum HMGB1/SOFA mortality rate in sepsis patients from the initial three-days to the second three-days after admission. A)HMGB1; B)SOFA.

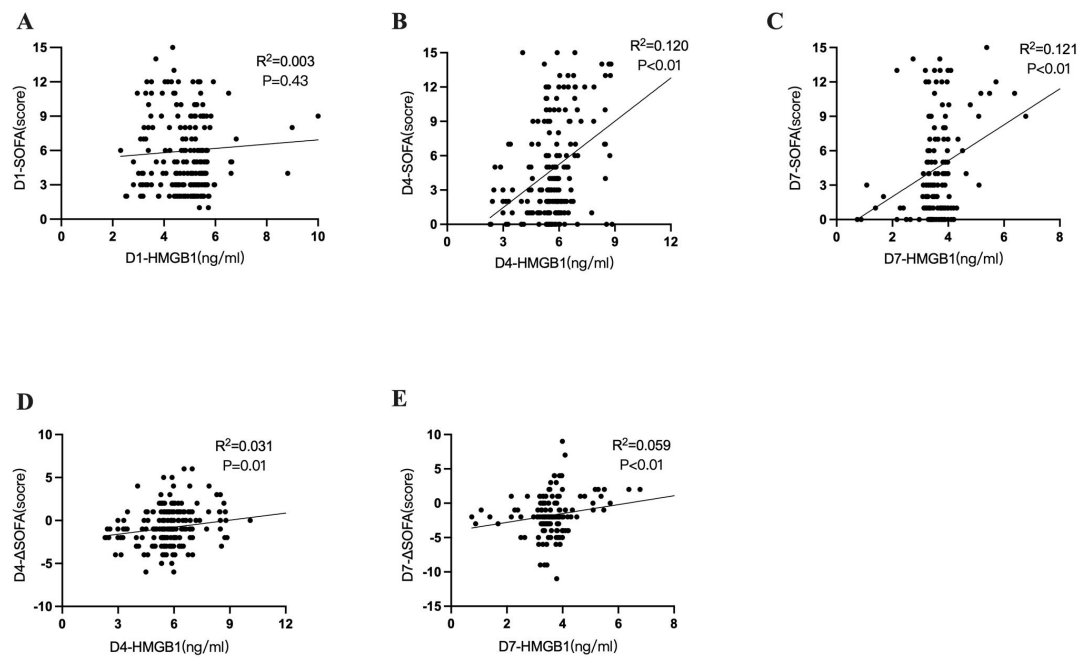


Fig.s2 Correlations of serum HMGB1 levels and SOFA score in sepsis patients.

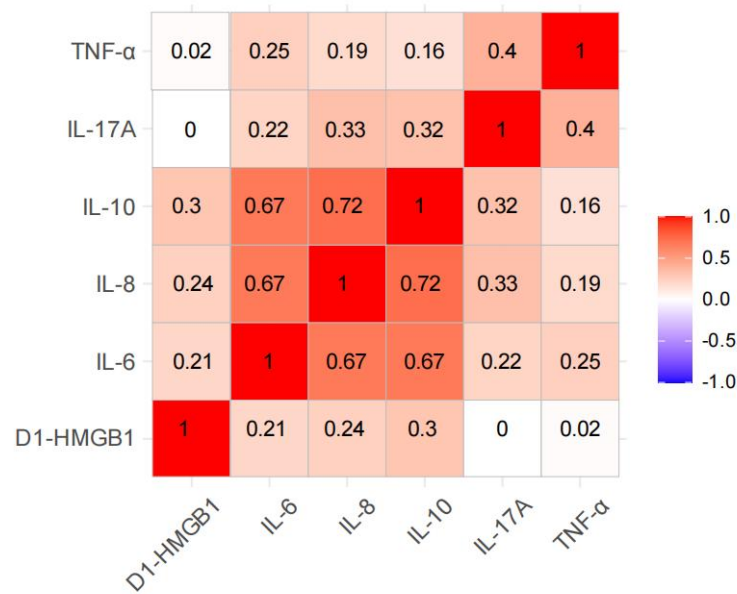


Fig.s3 Correlations of serum HMGB1 levels and inflammatory factors in sepsis patients.

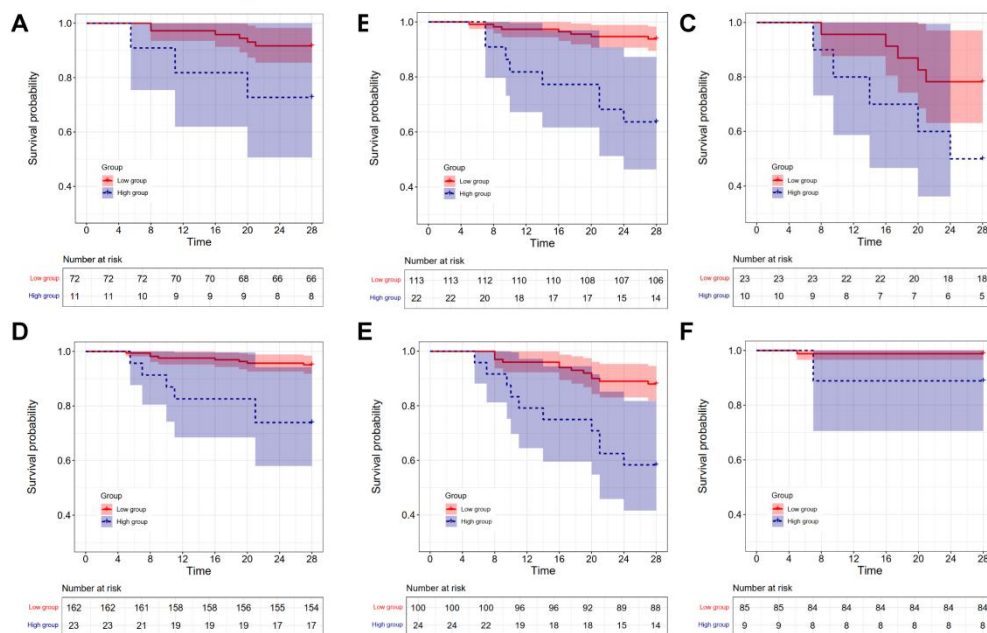


Fig.s4 Kaplan-Meier estimates of survival rate distribution on D4-HMGB1 among patients with sepsis complicated with AKI, autoimmune and respiration disease. A) AKI, B) non-AKI; C) autoimmune; D) non-autoimmune; E) respiration disease;

F)non-respiration disease.