

## **Uptake mechanisms and functions of isolated mitochondria in mesenchymal stromal cells**

Mai Kanai<sup>1,#</sup>, Miyabi Goto<sup>2,#</sup>, Shoko Itakura<sup>1</sup>, Makiya Nishikawa<sup>1</sup>, and Kosuke Kusamori<sup>2,\*</sup>

<sup>1</sup>Laboratory of Biopharmaceutics, Faculty of Pharmaceutical Sciences, Tokyo University of Science, 6-3-1 Nijuku, Katsushika, Tokyo 125-8585, Japan

<sup>2</sup>Laboratory of Cellular Drug Discovery and Development, Faculty of Pharmaceutical Sciences, Tokyo University of Science, 6-3-1 Nijuku, Katsushika, Tokyo 125-8585, Japan

<sup>#</sup>These authors contributed equally to this work.

<sup>\*</sup>Corresponding author.

## Supplementary Information

**Supplementary Fig. S1. Time-lapse movie of fluorescent-labeled mitochondria uptake using a digital microscope.**

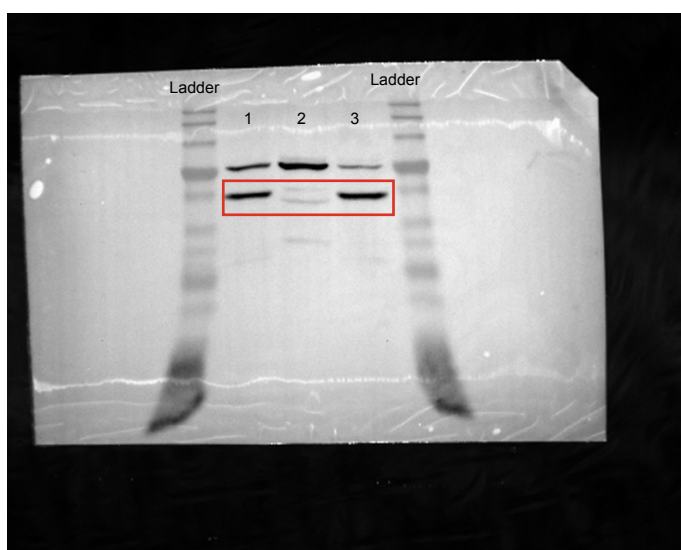
**Supplementary Fig. S2. Time-lapse movie of non-labeled mitochondria uptake using a 3D-OWFM.**

**Supplementary Fig. S3. Source Data for Figure 1c.**

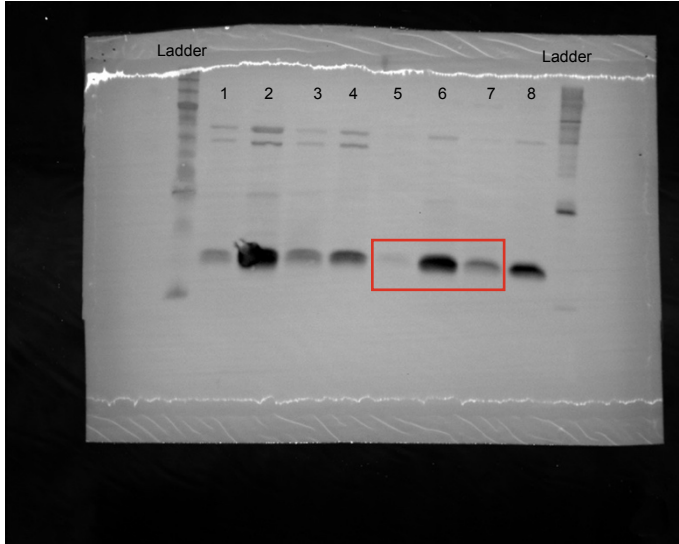
(a)



(b)



(c)



**Supplementary Fig. S3. Source Data for Figure 1c.** Uncropped and unprocessed Western blot images corresponding to Figure 1c. Molecular weight markers are shown on both sides of the membranes. (a) Lamin B1, (b)  $\alpha$ -Tubulin, (c) COXIV. (a, c) Lanes 5–7 and (b) Lanes 1–3 were selected and cropped for use in the main figure. The cropped regions for each blot are indicated by boxes.