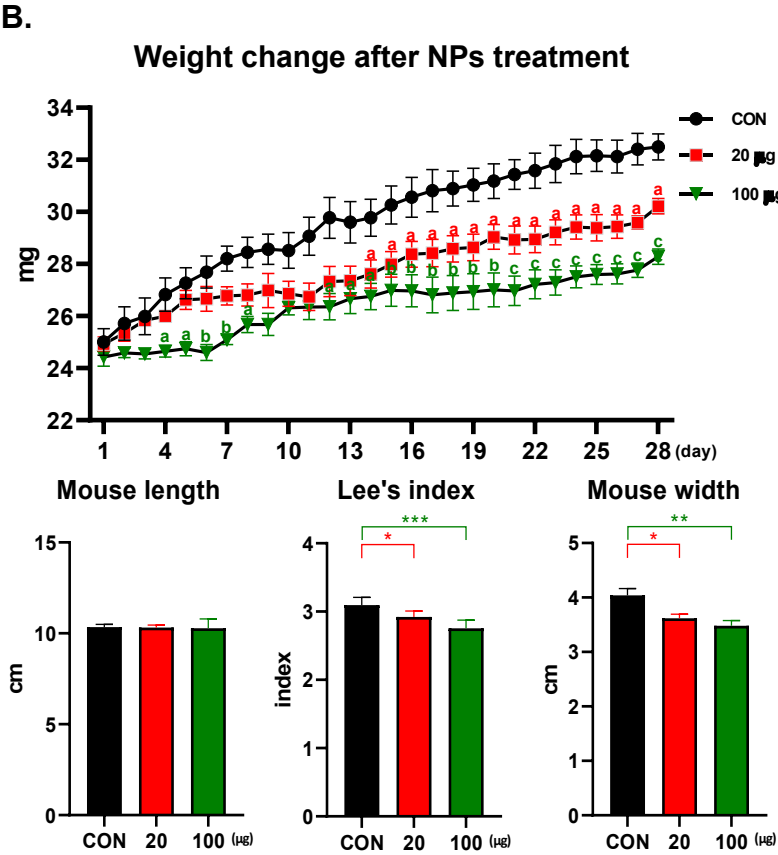
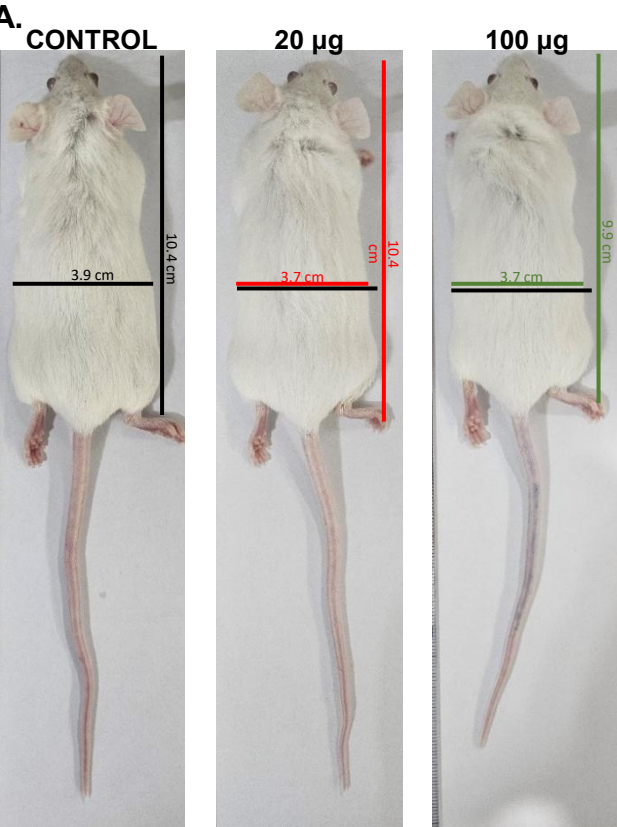


Supplement 1.



**Supplement 1.** (A,B) Body weight change was measured throughout the NP administration period. After the completion of administration, mouse length, Lee's index, and width were measured (n = 5, ordinary one-way ANOVA). Data are presented as the mean  $\pm$  SEM. \*p < 0.05, \*\*p < 0.01, \*\*\*p < 0.001.