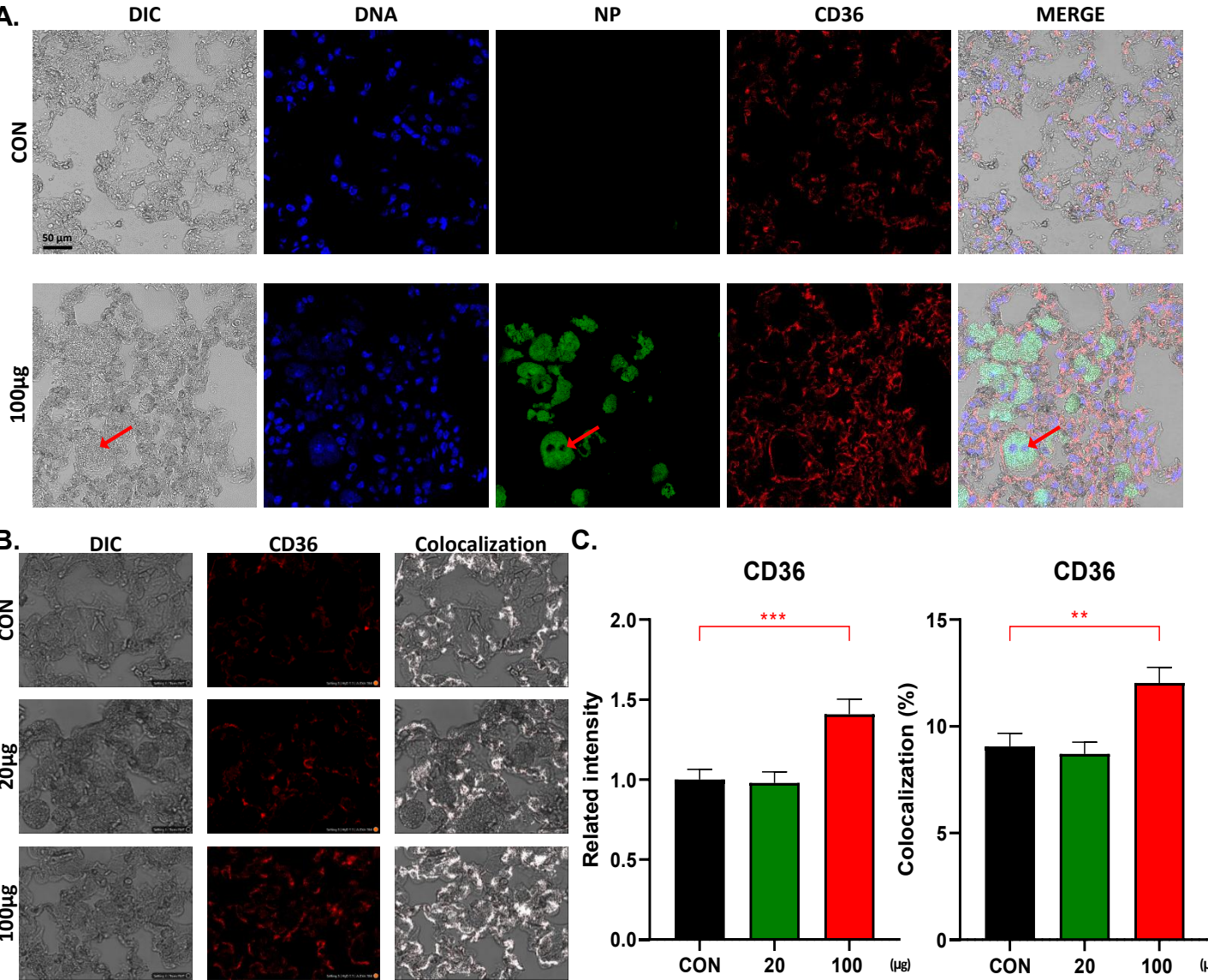


Supplement 2.



Supplement 2. (A) Immunofluorescence staining was performed to assess CD36 protein expression in lung tissue sections. (A, B and C) CD36, DNA and NPs were visualized using confocal microscopy, and the colocalization of CD36 and the intensity of CD36 expression in lung tissue are presented (n = 5, ordinary one-way ANOVA). Red arrow indicate macrophage. Data are presented as the mean ± SEM. **p < 0.01, ***p < 0.001.