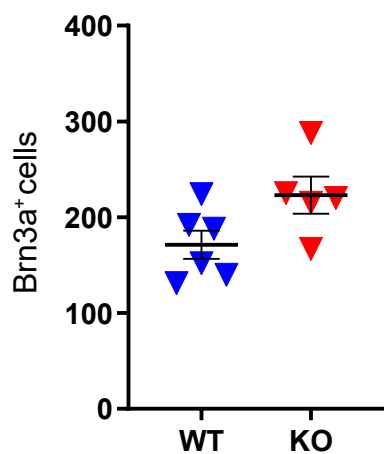
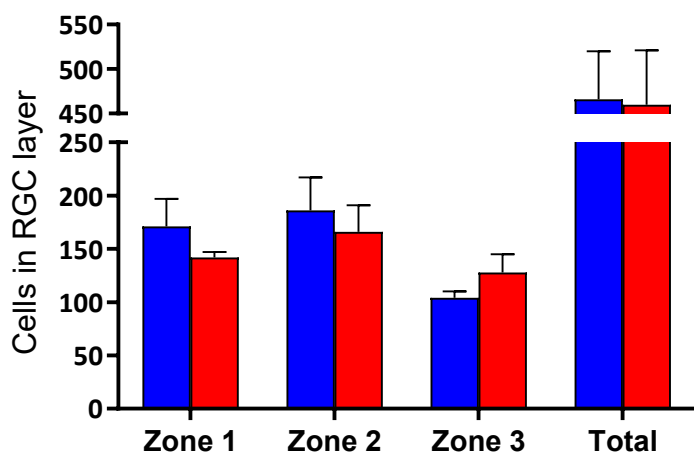


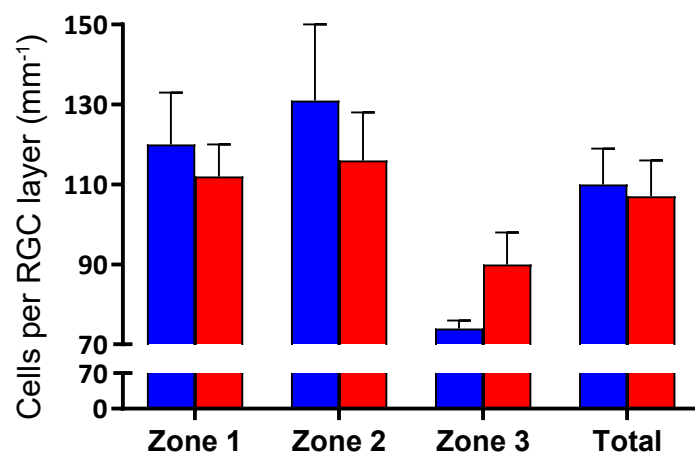
A



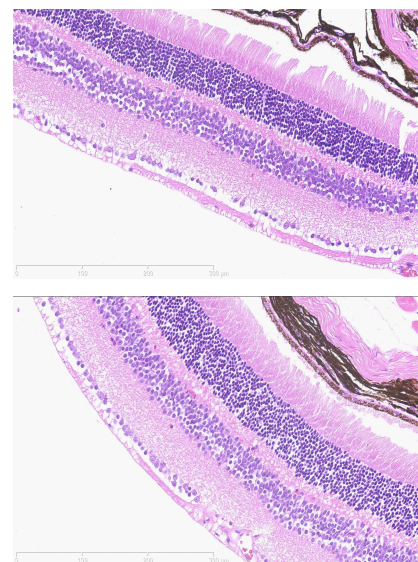
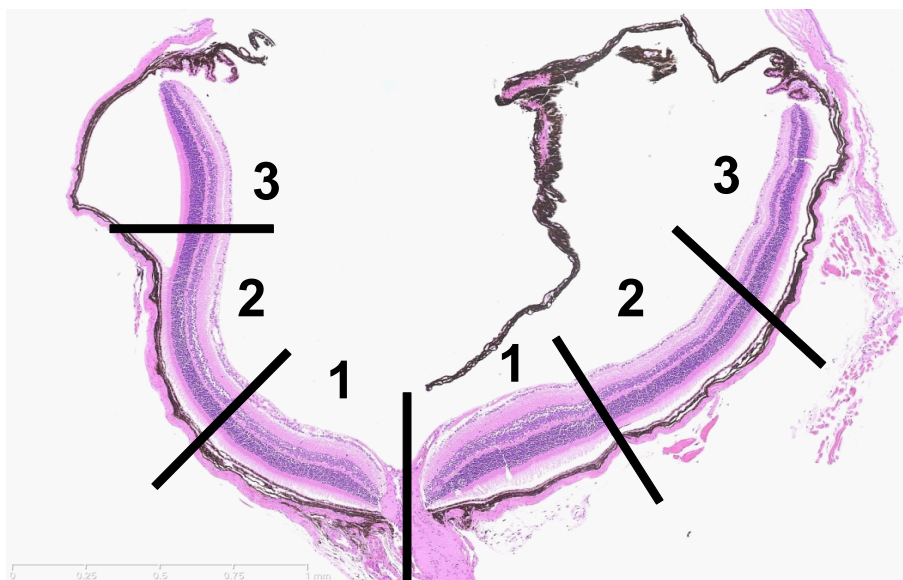
B



C



D



Supplementary Figure 4.

RGC number in the retina. Sagittal sections of the retina from WT (in blue) and KO (in red) mice at 7-month-old were analyzed for RGC number. Brn3a-positive cells in the entire immune-stained cryosection (A) were counted for $n = 4-6$ mice, 6 sections each. Since not all RGCs express the Brn3a marker, counting based on H&E staining was performed as well (B) for abundance and (C) for density; 8 paraffin sections; $n = 5-6$. For further analysis, the retina was divided into 3 even zones (D): zone 1 as proximal to ON, zone 2 as middle, and zone 3 as distal. (E) Exemplary WT and KO zone 1. Results are shown as mean \pm SEM.