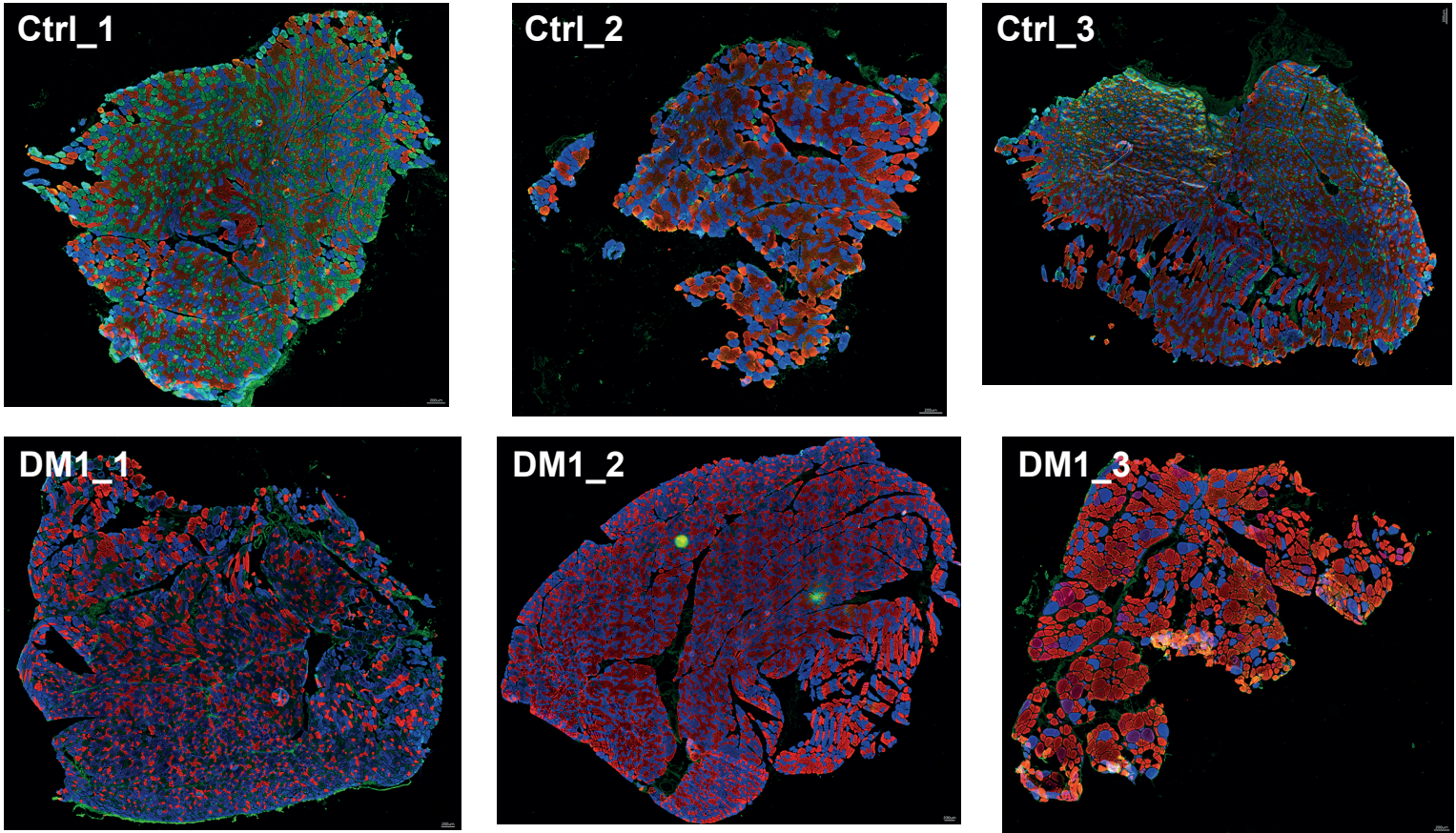
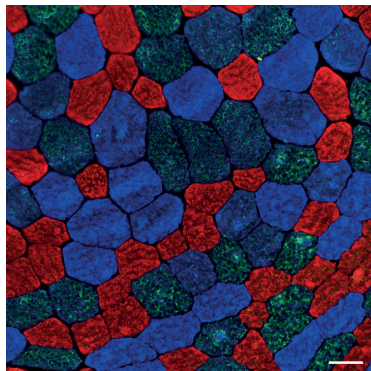


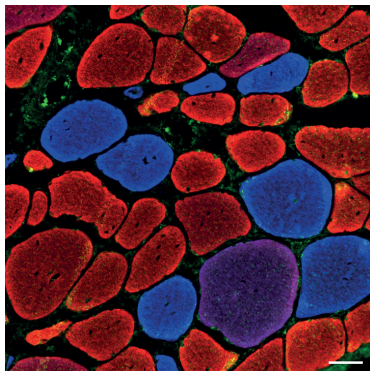
A



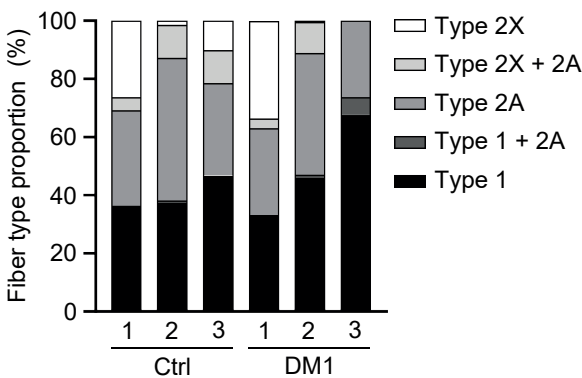
B



C



D



Fiber type distribution in Control and DM1 patient muscle specimens. (A) Representative immunofluorescence images of control and DM1 patient muscles sections stained for myosin heavy chain (MyHC) Type I (red), Type IIA (blue), and Type IIX (green). Scale bar: 200 μ m. **(B)** Higher magnification image of control (Ctrl_1) muscle section. Scale bar: 50 μ m. **(C)** Higher magnification of DM1 (DM1_3) muscle section. Scale bar: 50 μ m. **(D)** Quantification of fiber type proportion of control and DM1 patient muscle biopsies.