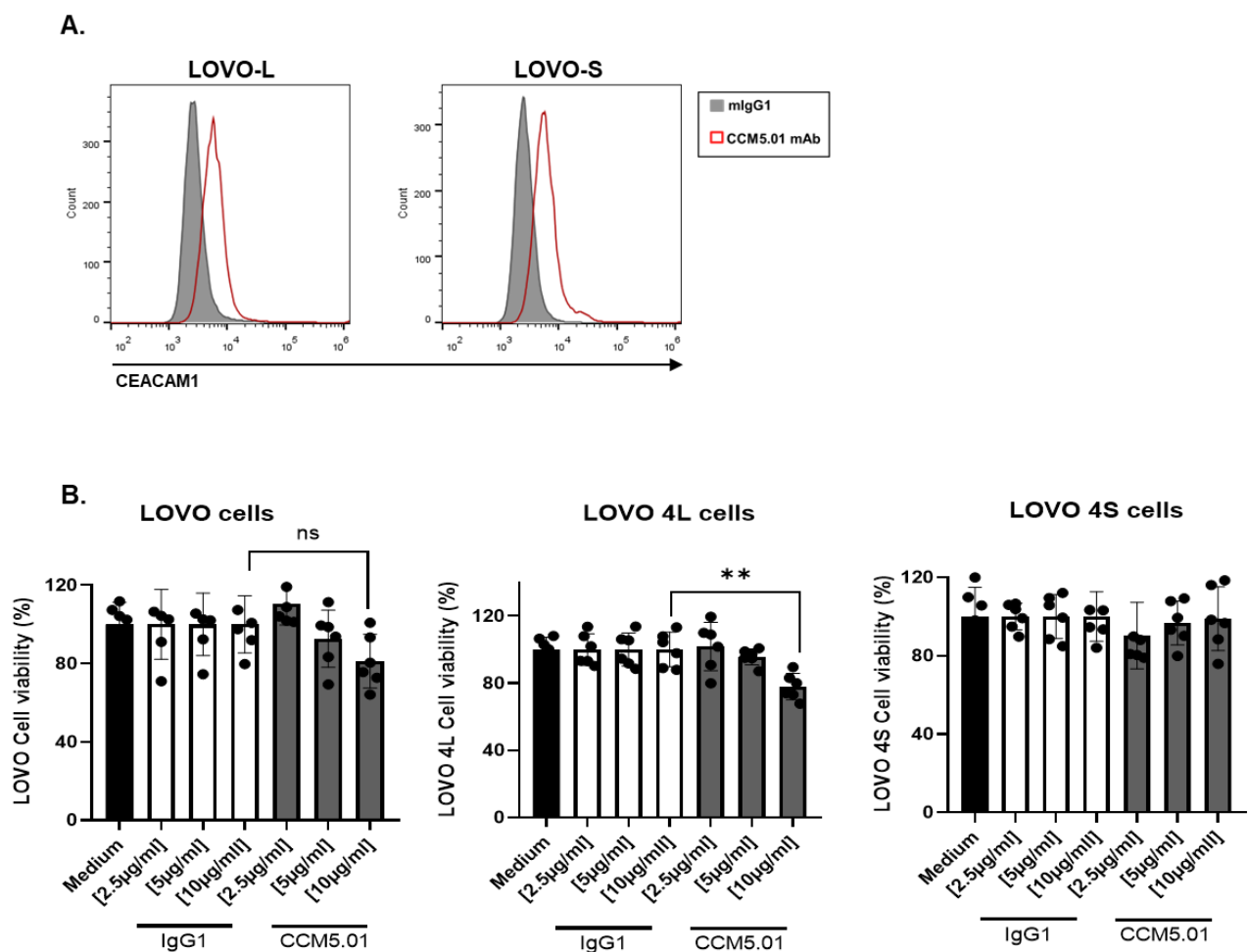


Supplementary Figure S1. Expression and function of transfected CEACAM1 in LOVO cell line cells.

A. FC analysis of LOVO cells transfected with CEACAM1 L or S isoforms (LOVOL/S respectively). Gray-filled histograms indicate the binding of an isotype-matched control Ab, and red open histograms indicate the binding of CCM5.01 mAb (representative of n=3). **B.** The metabolic rates of HT-29, HT-29L, and HT-29S cells treated with the indicated concentrations of CCM5.01 or isotype control mIgG1 for 72hrs was assessed by MTT assay according to the manufacturer's protocol. Data are expressed as the percentage of viable cells \pm SD - calculated as detailed in Fig.1C (n=2, the experiment was performed in quintuplicates).



Supplementary Figure S2. CCM5.01 mAb does not induce phosphorylation of SHP-1 or caspase-3 cleavage in HT-29S cells.

HT-29S cells were treated with mIgG1 or CCM5.01 (10µg/ml), and phosphorylation of SHP1 (n=2) at the indicated time points was evaluated by WB analysis.

