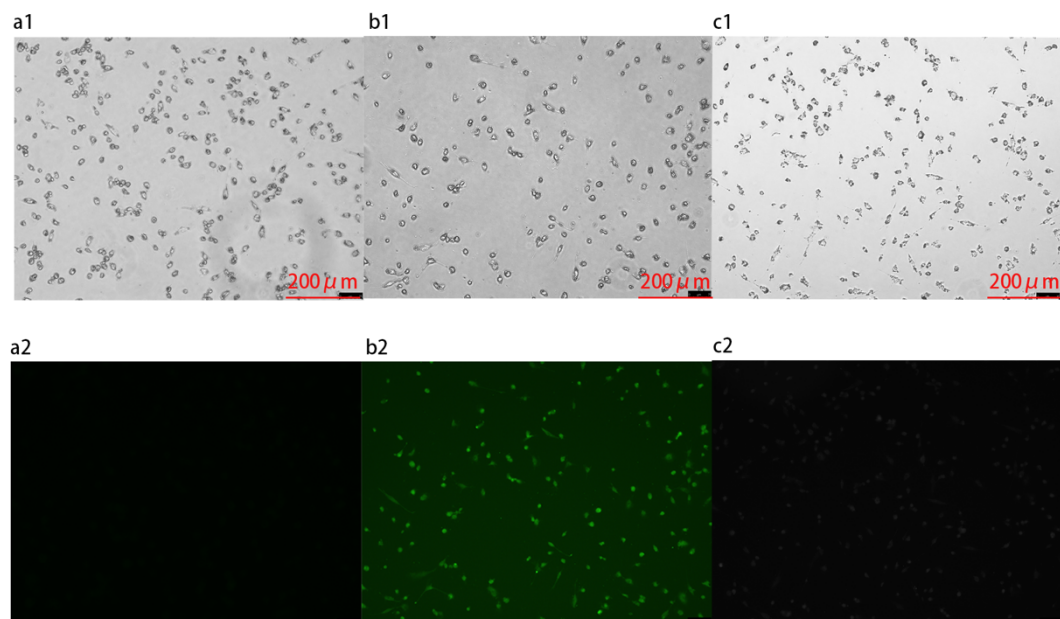
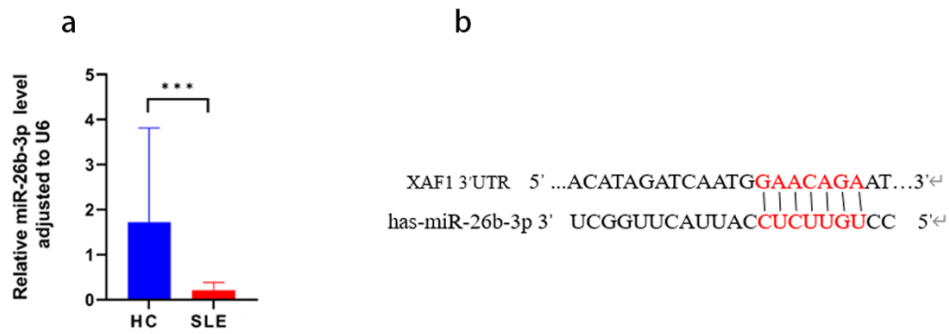


**Figure S1. Expression of adherent state of THP-1 cells stimulated by PMA for 24 hours.** (a) Expression of adherent state of THP-1 cells stimulated by PMA for 24 hours. (b) Cell viability of THP-1 cells in NC group and LPS group at different time points. \*\* $P < 0.01$ . Note: NC represents Normal Control group; LPS represents LPS stimulation group.

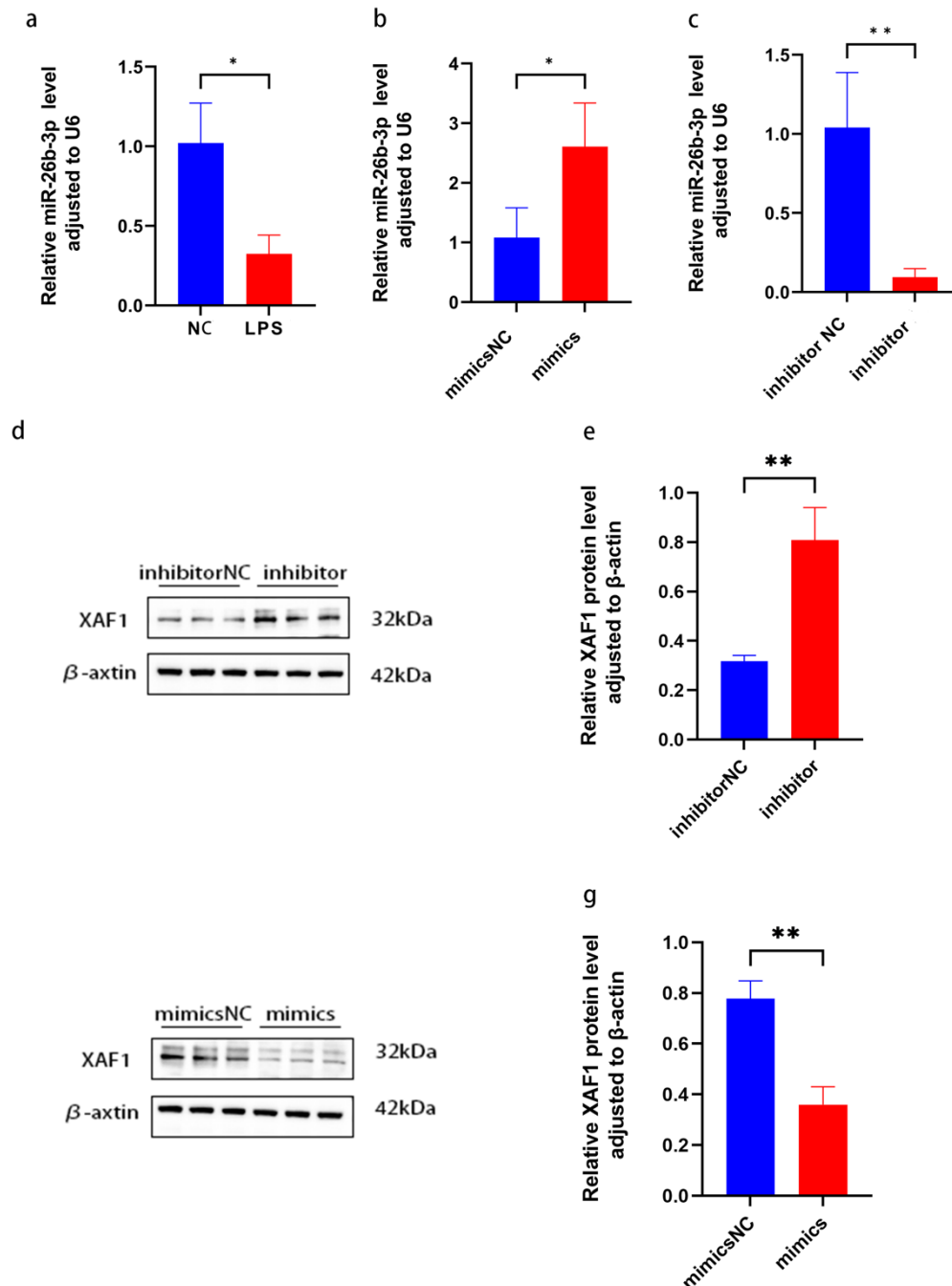


**Figure S2. Verification of THP-1 macrophage subtype after LPS stimulation by immunofluorescence.** (a1) Bright-field cell performance of the blank control group. (a2) Fluorescence cell performance in dark field of the blank control group. (b1) Bright-field cell performance of the M1 group. (b2) Fluorescence cell performance in dark field of the M1 group. (c1) Bright-field cell performance of the M2 group. (c2) Fluorescence cell performance in dark field of the M2 group. Note: M1 group represents M1 polarized cell group; M2 group represents M2 polarized cell group.



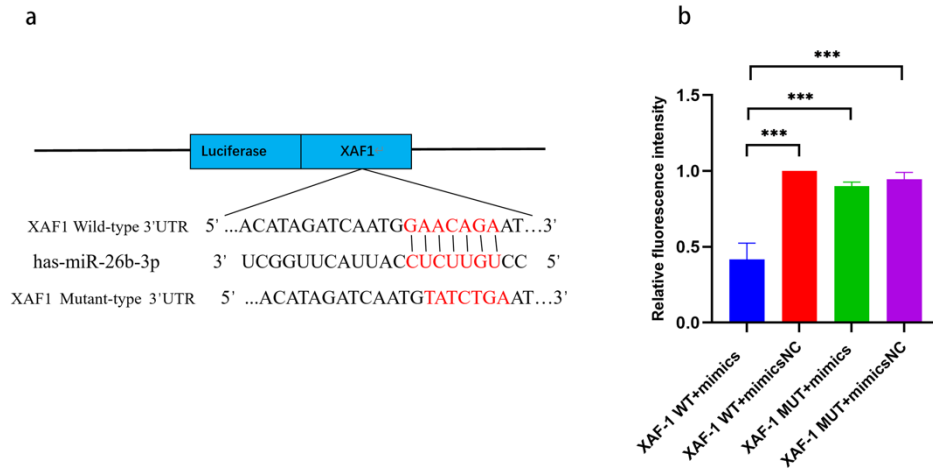
**Figure S3. miR-26b-3p expression in human PBMCs and its predicted binding site within XAF1.**

(a) miR-26b-3p expression levels in healthy controls (HC) versus systemic lupus erythematosus (SLE) patients. (b) Predicted complementary binding sequence between XAF1 and miR-26b-3p. \*\*\* $P < 0.001$ .



**Figure S4. Relationship between miR-26b-3p and XAF1 expression regulation.** (a) Comparison of miR-26b-3p expression between N group and LPS group. (b) Comparison of miR-26b-3p expression between mimicsNC group and mimics group. (c) Comparison of miR-26b-3p expression between inhibitor NC group and inhibitor group. (de) Comparison of XAF1 protein expression between mimicsNC group and mimics group. (fg) Comparison of XAF1 protein expression between inhibitor NC group and inhibitor group. \*P < 0.05, \*\*P < 0.01. Note: mimics NC represents mimics

negative control group; mimics represents miRNA mimics group; inhibitor NC group represents inhibitor negative control group; inhibitor represents inhibitor group.



**Figure. S5. Interaction between miR-26b-3p and XAF1.** (a) Construction of wild-type and mutant plasmids expressing XAF1, and the binding of XAF1 with miR-26b-3p sequence. (b) The effect of XAF1 wild-type and mutant on the fluorescence intensity of firefly was observed by double luciferase experiment. \*\*\* $P < 0.01$ . Note: XAF-1 WT+mimics represents XAF-1 wild-type cells transfected with miRNA mimics group; XAF-1 WT+mimicsNC represents XAF-1 wild-type cells transfected with miRNA mimics negative control group; XAF-1 MUT+mimics represents XAF-1 gene mutant cells transfected with miRNA mimics group; XAF-1 MUT+mimicsNC represents XAF-1 gene mutant cells transfected with miRNA mimics negative control group.