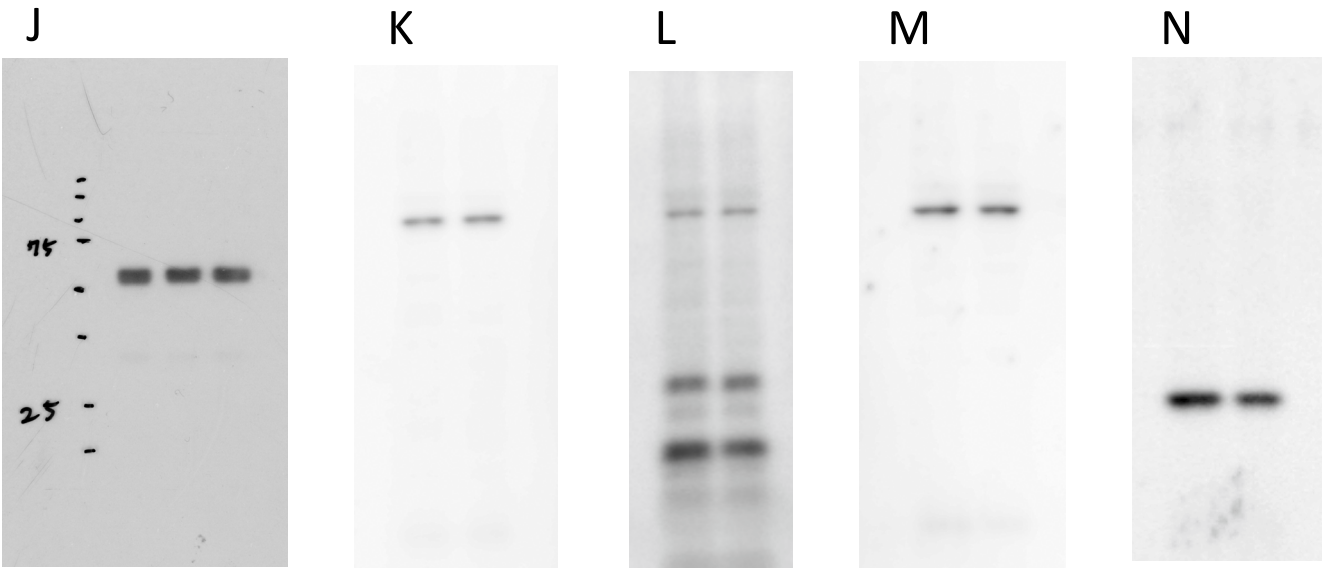
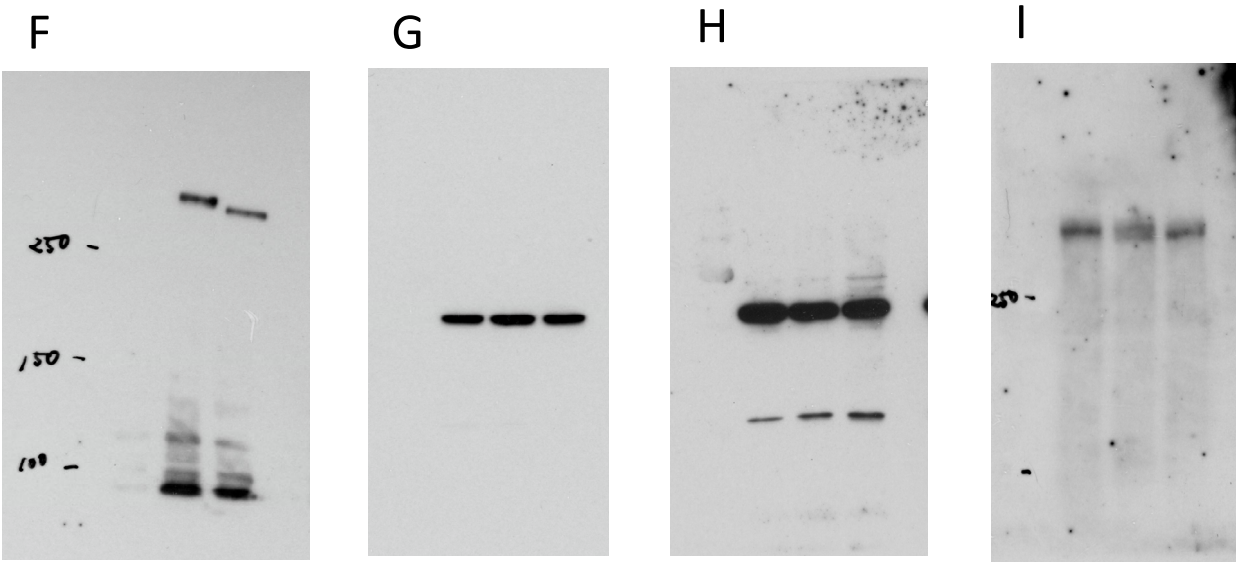
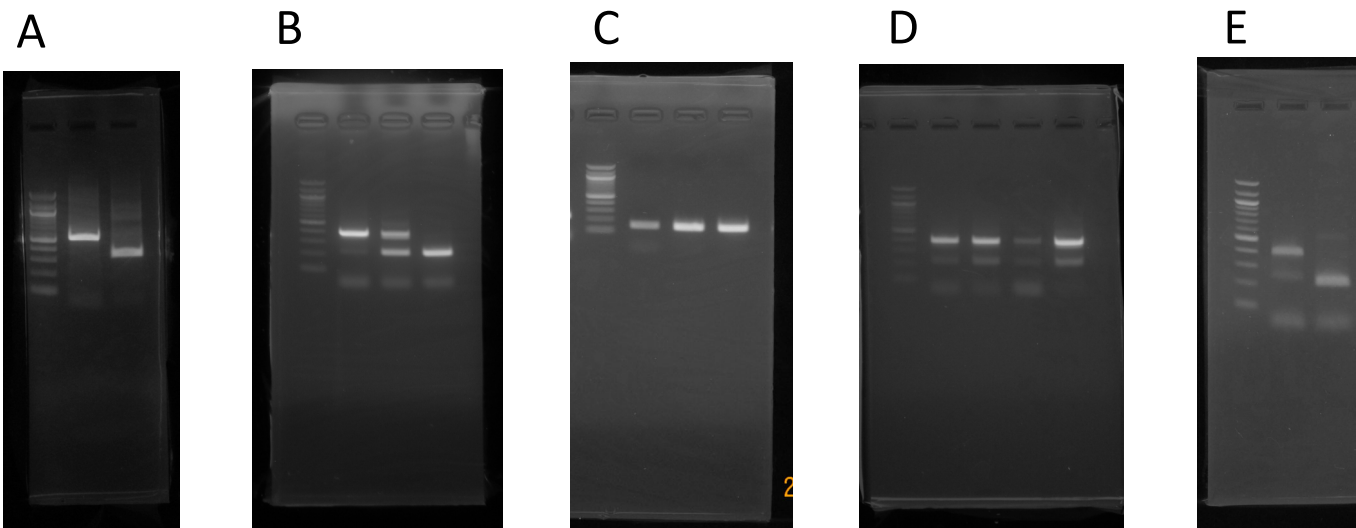


Supplementary Material 1



Supplementary Material 1. Full-length electrophoretic gels and blots

A-E. Image data represent electrophoresis gels. **A.** RT-PCR after the transfection of the minigene constructs into SH-SY5Y cells in Fig. 2B. **B-C.** RT-PCR between *Tenm4* exons 9 and 11 (B) and an exon 10 skip-specific variant (C) was performed using mRNA from the neocortex of WT, heterozygous, and homozygous *Tenm4^{ΔE10}* mice in Fig. 3C. **D.** RT-PCR of the region between exons 9 and 11 was performed using mRNA from the OPC and OL of WT mice in Fig. 6A. **E.** RT-PCR of the region between exons 9 and 11 was performed using mRNA of the OLs from WT and homozygous mice in Fig. 6B. **F-N.** Image data represent immunoblots. **F.** TENM4 expression was detected using anti-FLAG-tag antibody in Fig. 2C. **G-H.** The same samples as in (F) were used for detection with anti-GFP and anti- α -tubulin antibodies. (H) is an overexposure of (G). **I.** Tenm4 protein from the cerebral cortex of WT and *Tenm4^{ΔE10}* mice was detected using anti-teneurin4 antibody. **J.** The same samples as in (I) were used for detection with anti- α -tubulin antibody. **K.** β -Actin in the OLs of WT and *Tenm4^{ΔE10}* mice was detected using anti- β -actin antibody. **L.** MBP protein was detected using anti-MBP antibody on stripped blot of (K). **M.** β -Actin in the OLs of WT and *Tenm4^{ΔE10}* mice was detected using anti- β -actin antibody. **N.** PLP protein expression was detected using anti-PLP antibody on stripped blot of (M).