

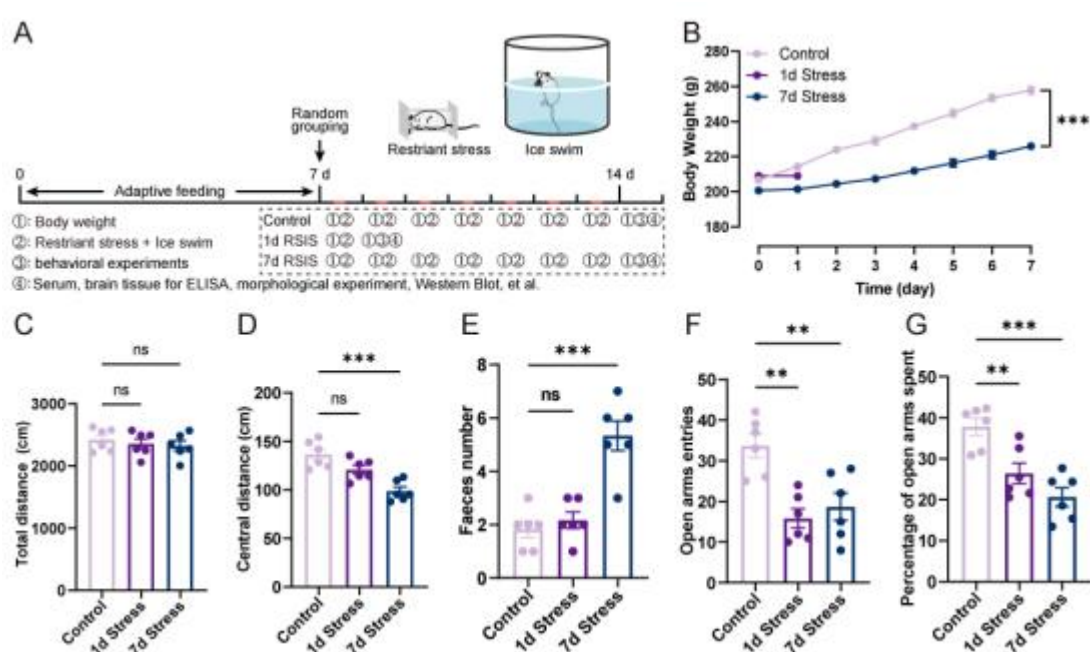
## **Supplementary Information**

### **NR3C1/PRKACG-mediated impairment of mitochondrial quality control underlies stress-induced hypothalamic neuronal injury**

Guowei Zhang<sup>1,2</sup>, Jingze Cong<sup>1,2</sup>, Xiaowei Feng<sup>1,2</sup>, Hongjian Xin<sup>1,2</sup>, Weihao Zhu<sup>1,2</sup>, Rui Shi<sup>1,2</sup>, Chenyu Li<sup>1,2</sup>, Yang Wang<sup>3</sup>, Rufei Ma<sup>1,2</sup>, Yingmin Li<sup>1,2</sup>, Bin Cong<sup>1,2\*</sup>, Weibo Shi<sup>1,2\*</sup>

**Supplementary Fig 1. The successful establishment of a stress rat model.**

**Uncropped and unedited blot/gel images**



**Supplementary Fig 1. The successful establishment of a stress rat model. (A) Schematic illustration of the stress model. (B) The weight changes of rats during the modeling period. (C-E) The records of the total movement distance, central area movement distance and fecal pellet of rats in the open field. (F-G). The times and percentage of time that rats entered the open arm in the elevated plus maze. \*, \*\*, \*\*\* indicates  $p < 0.05$ ,  $p < 0.01$ ,  $p < 0.001$  versus control, respectively.**

Uncropped and unedited blot/gel images

Fig. 1c

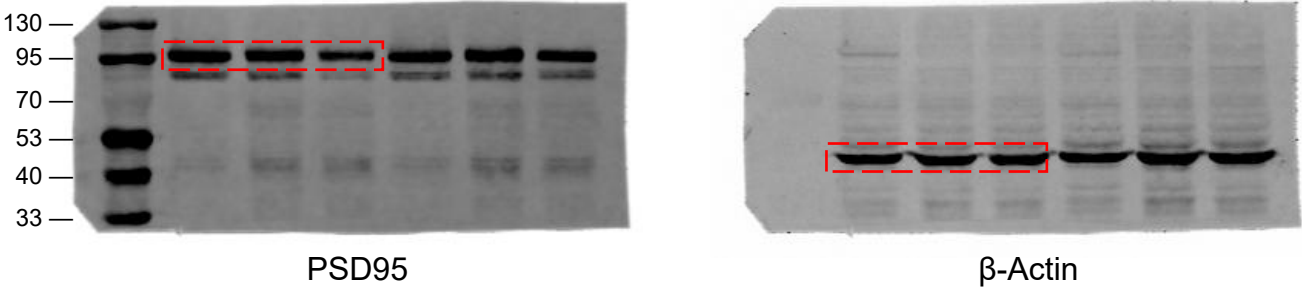


Fig. 2b

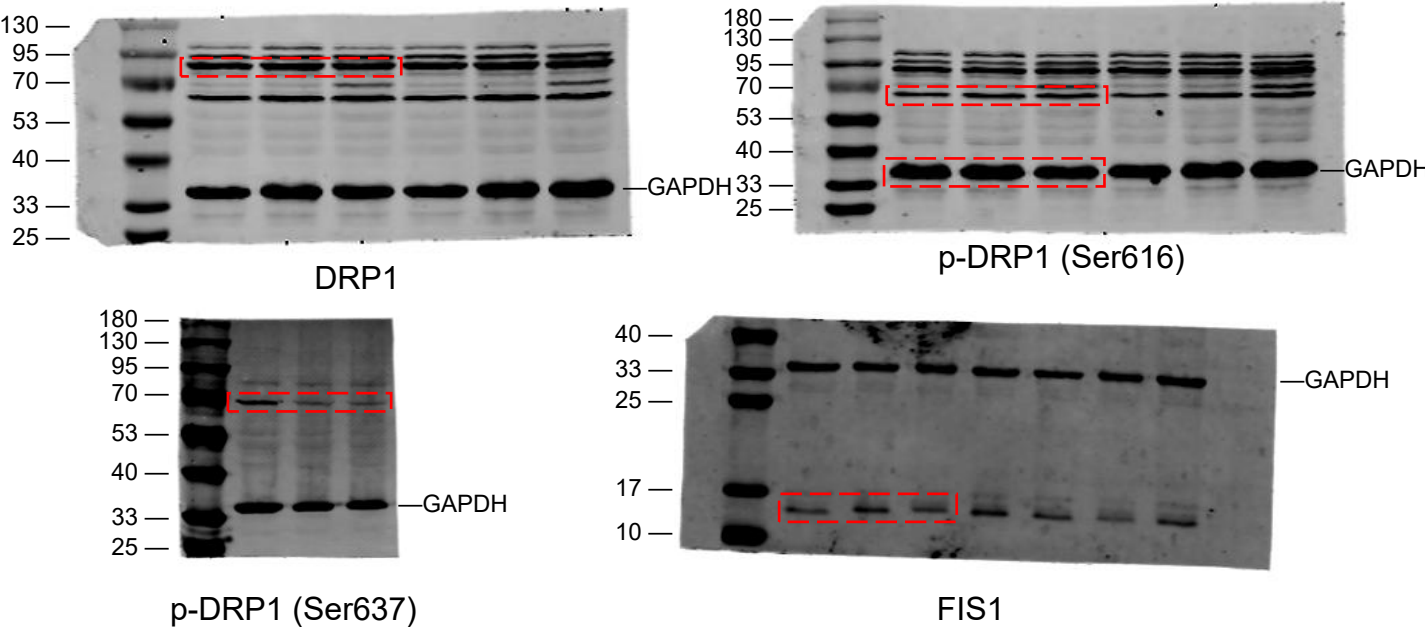


Fig. 2f

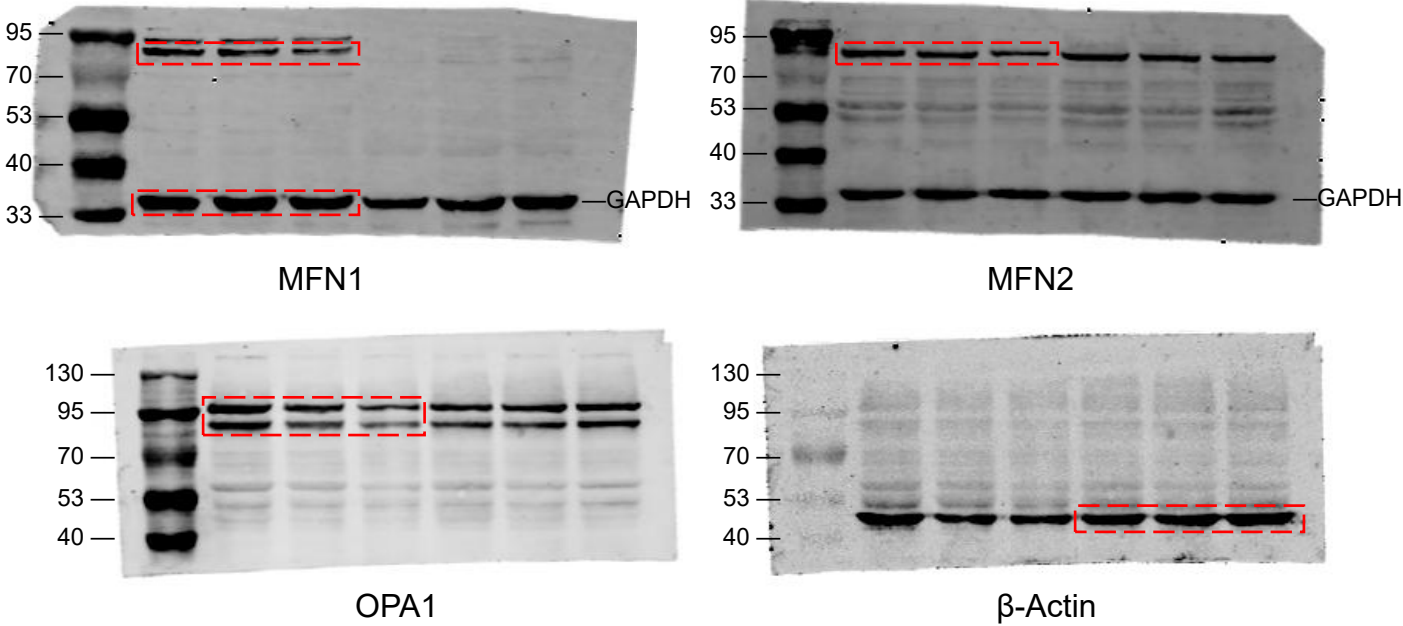


Fig. 3b

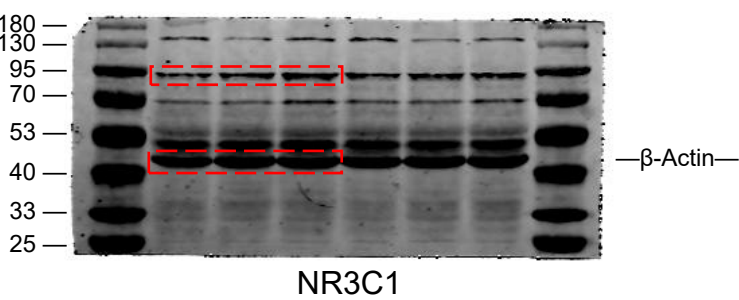


Fig. 3e

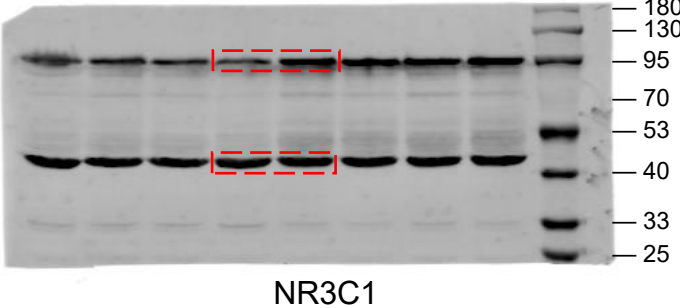


Fig. 3i

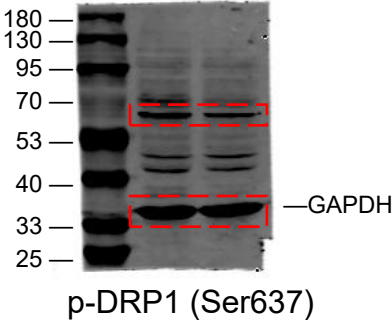
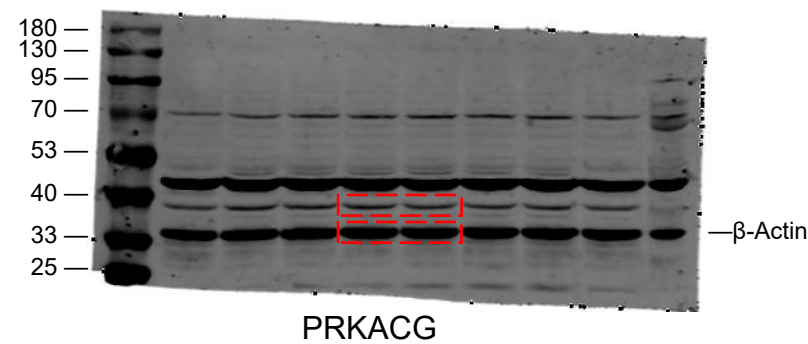


Fig. 3n

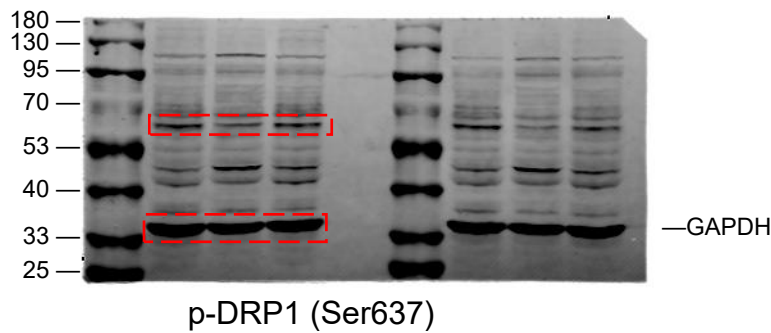
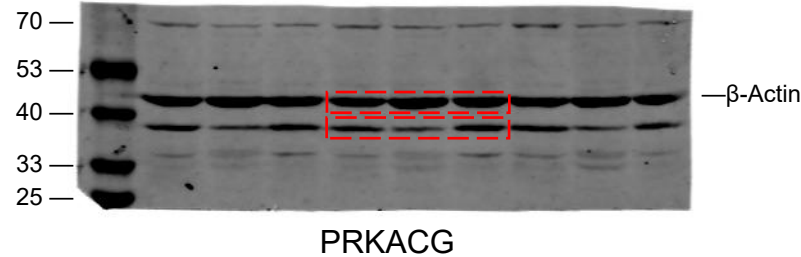


Fig. 4a

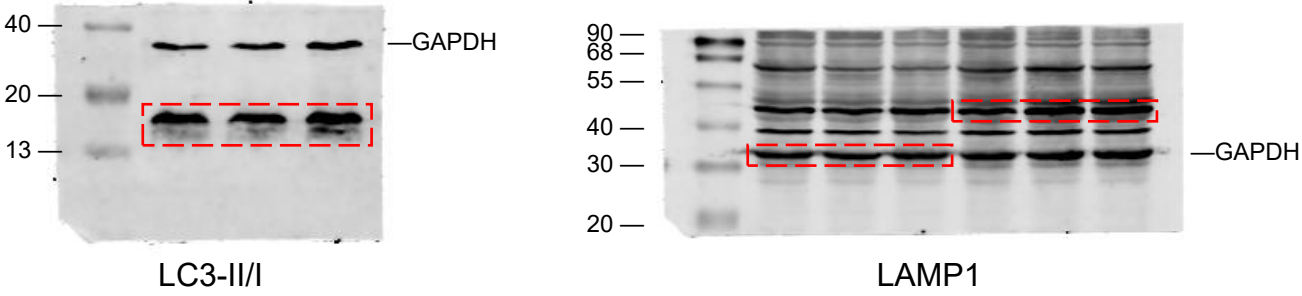


Fig. 4d

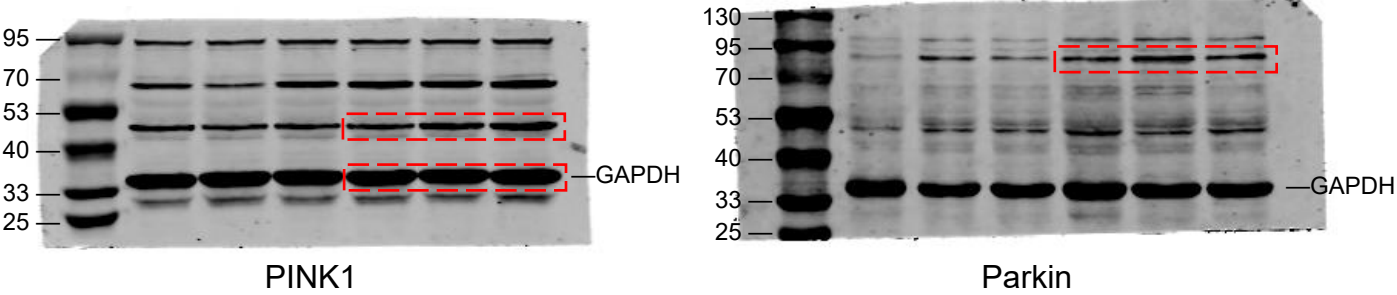


Fig. 4g

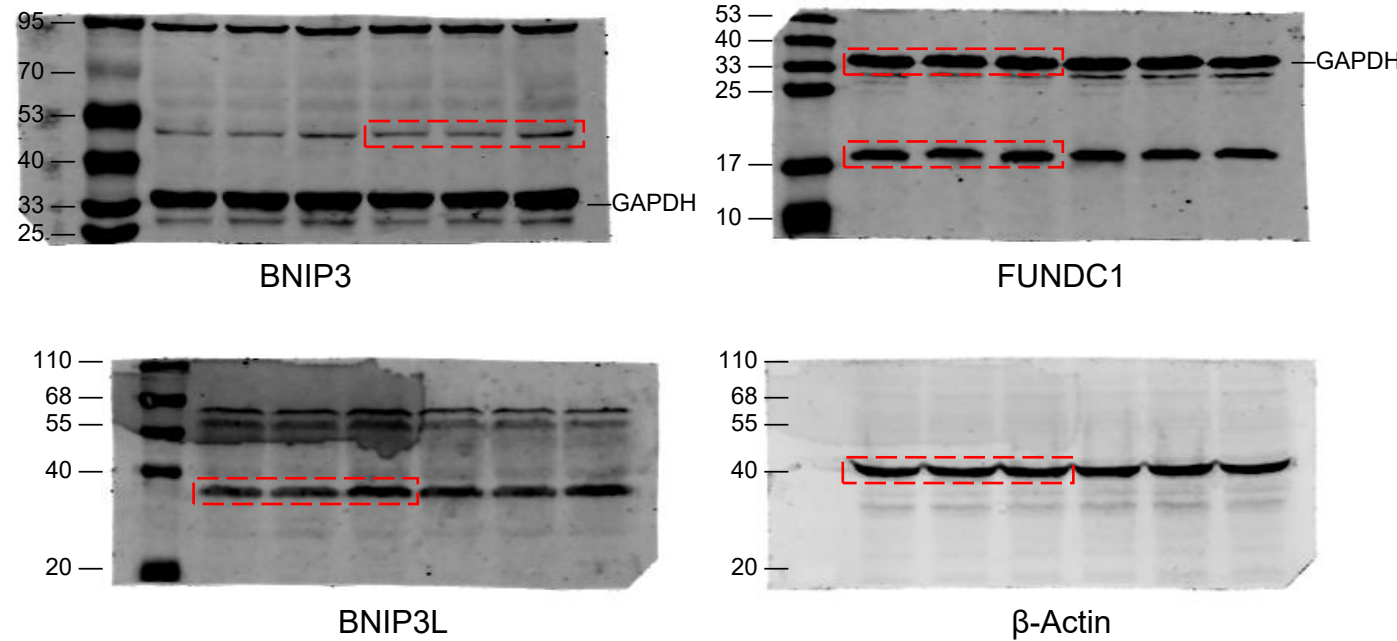


Fig. 4k

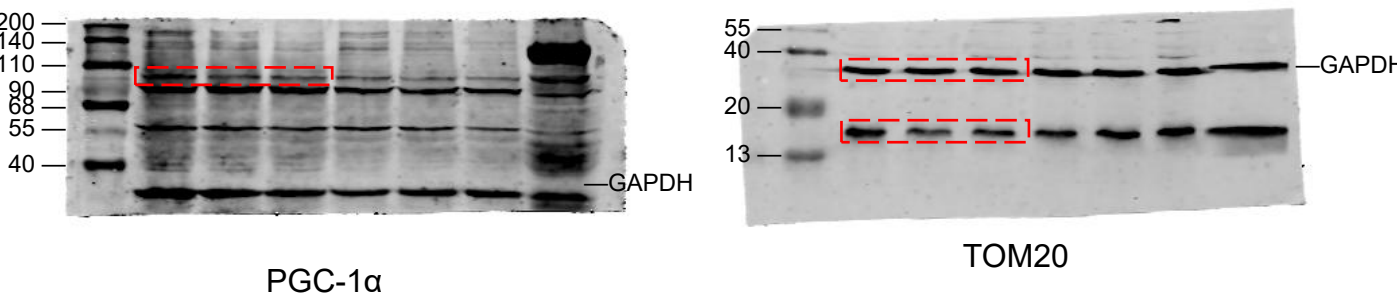


Fig. 5a

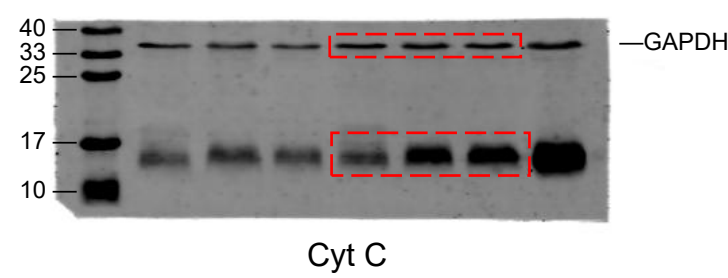


Fig. 5h

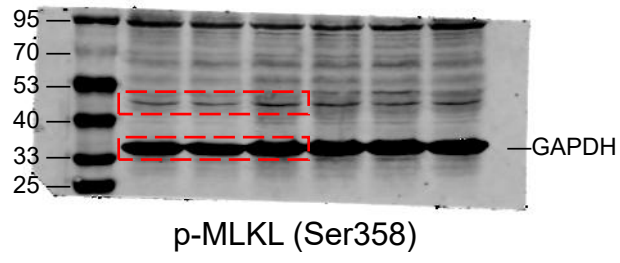
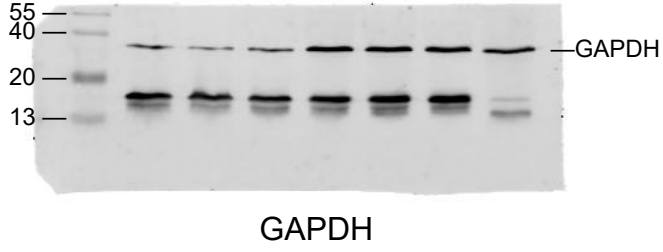
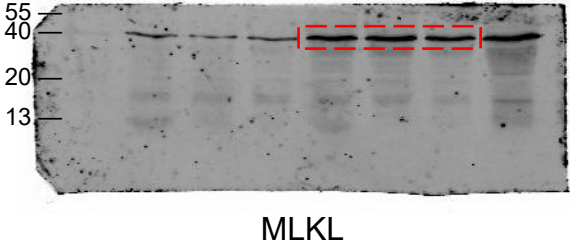
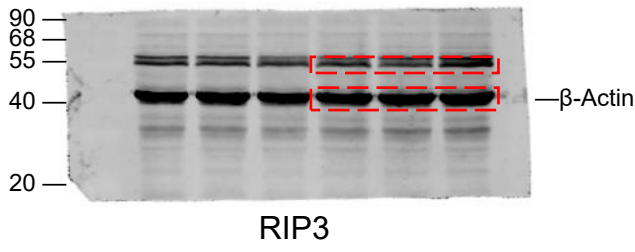
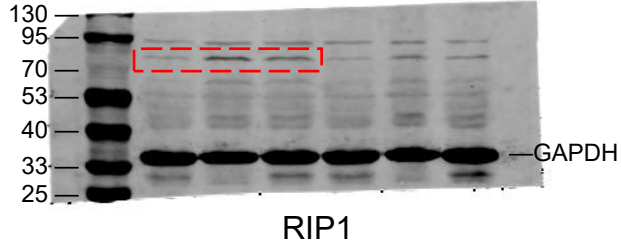




Fig. 6a

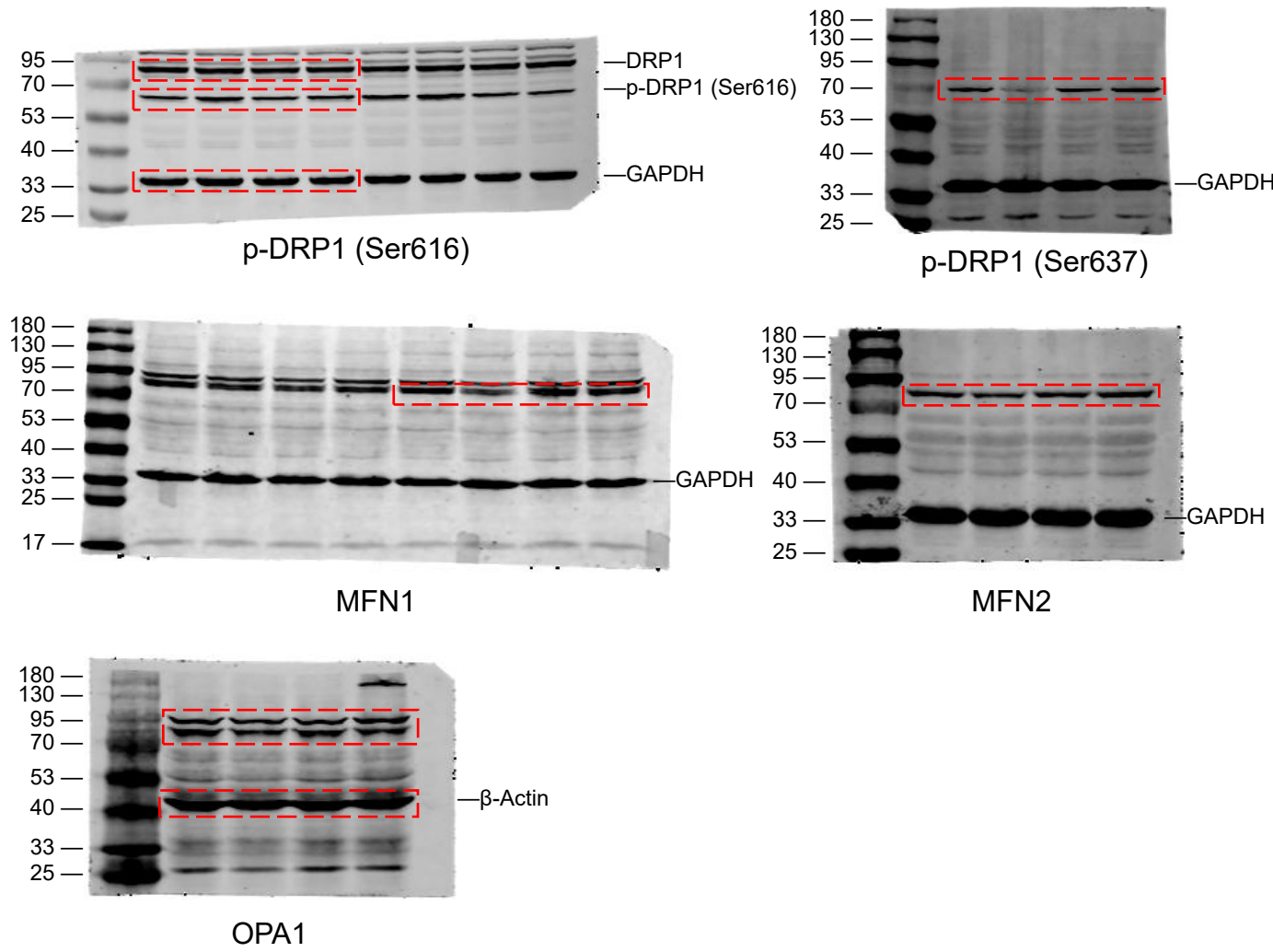


Fig. 6h

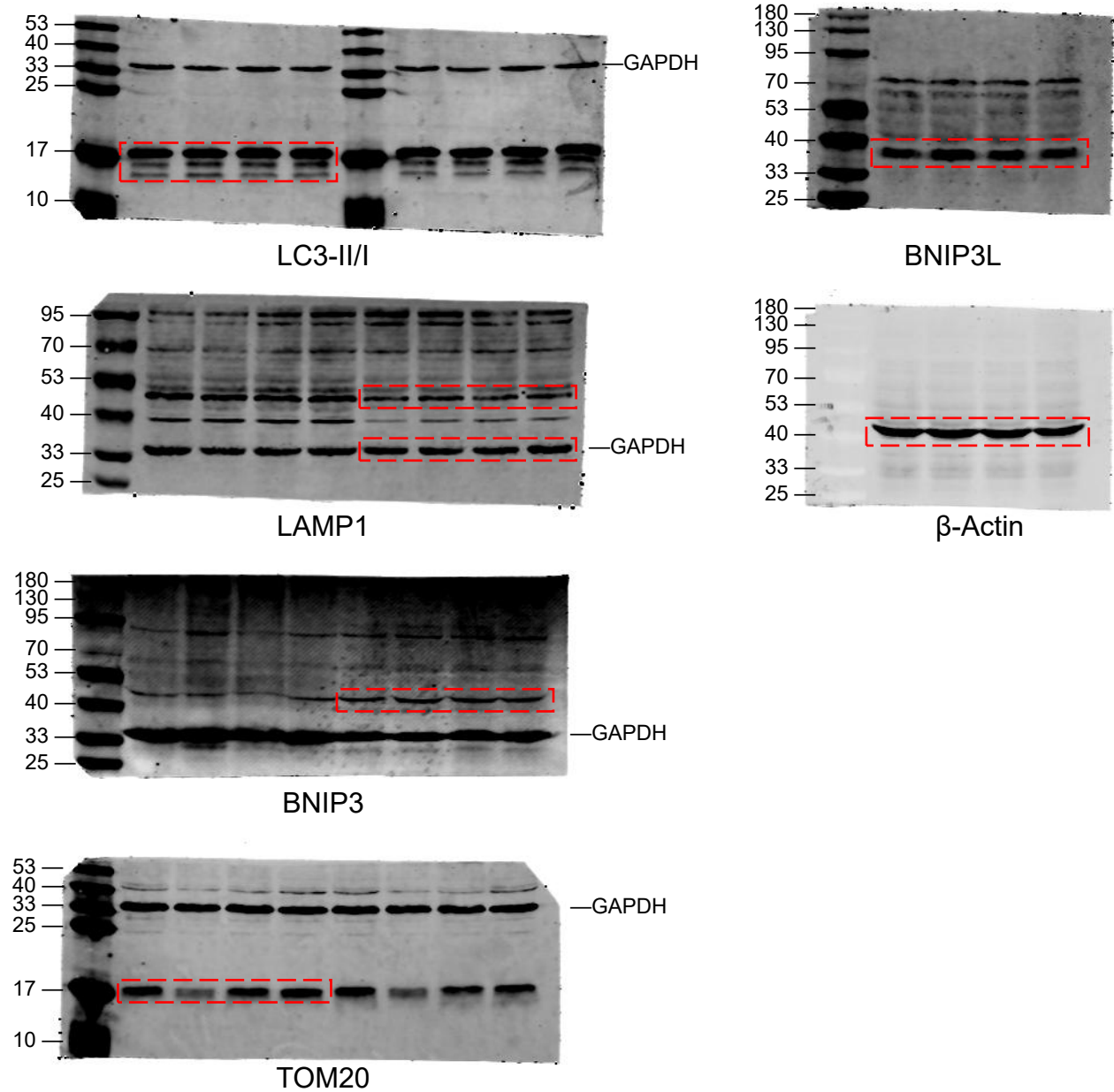


Fig. 6n

