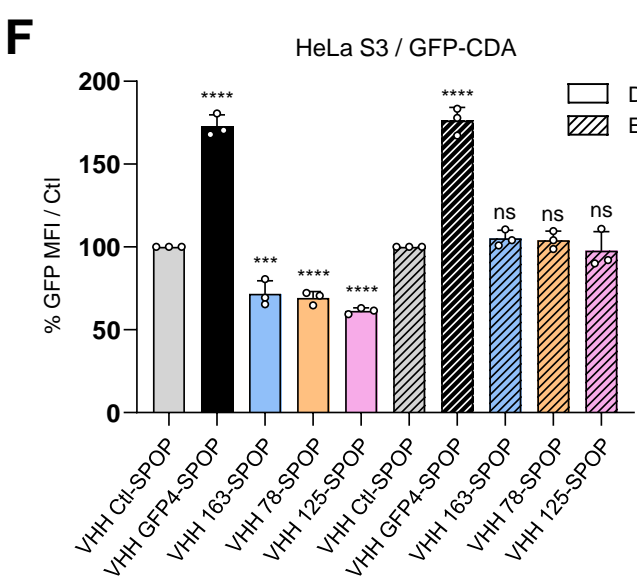
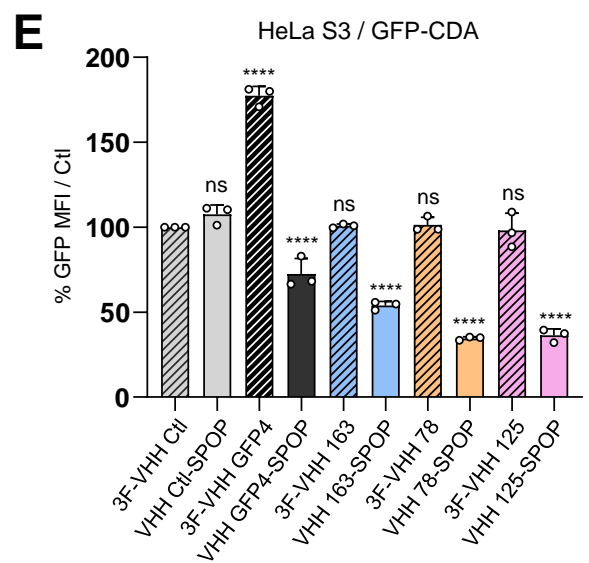
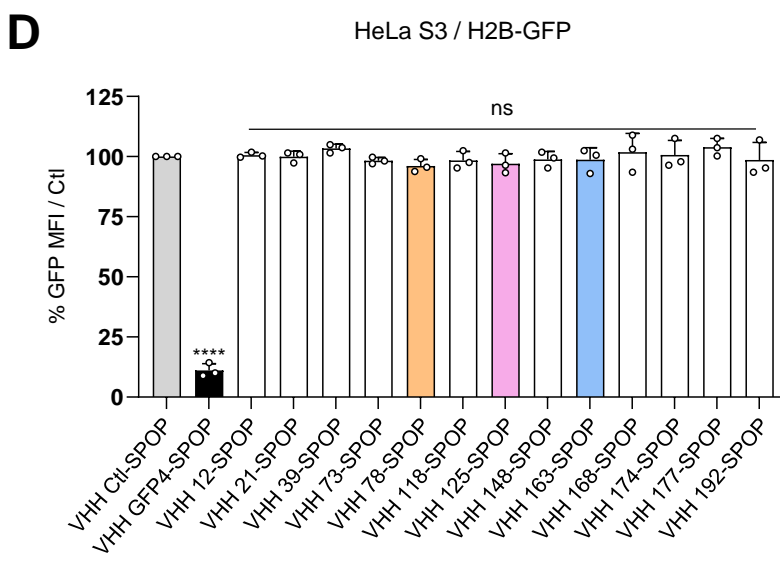
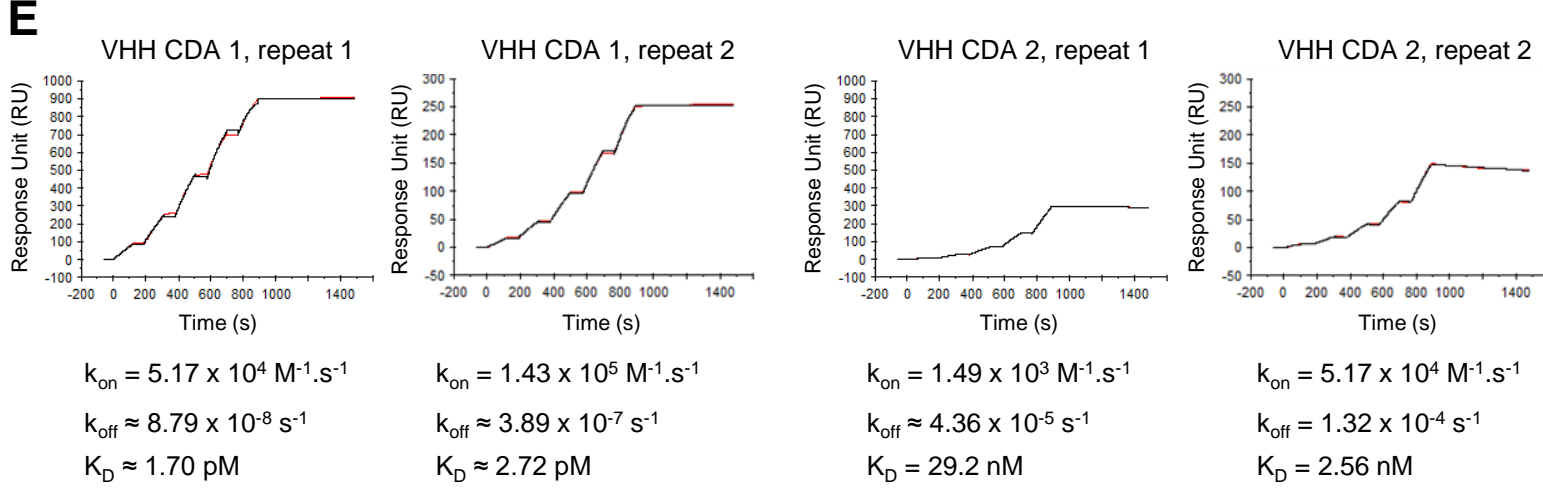
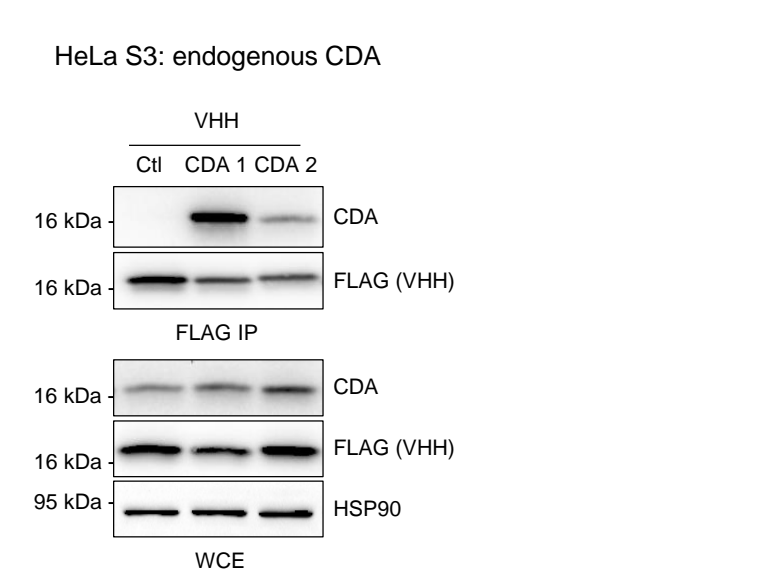
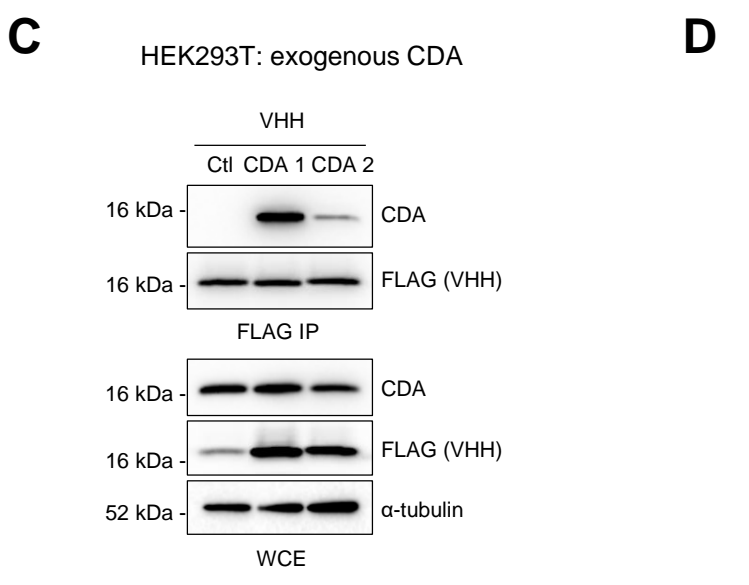
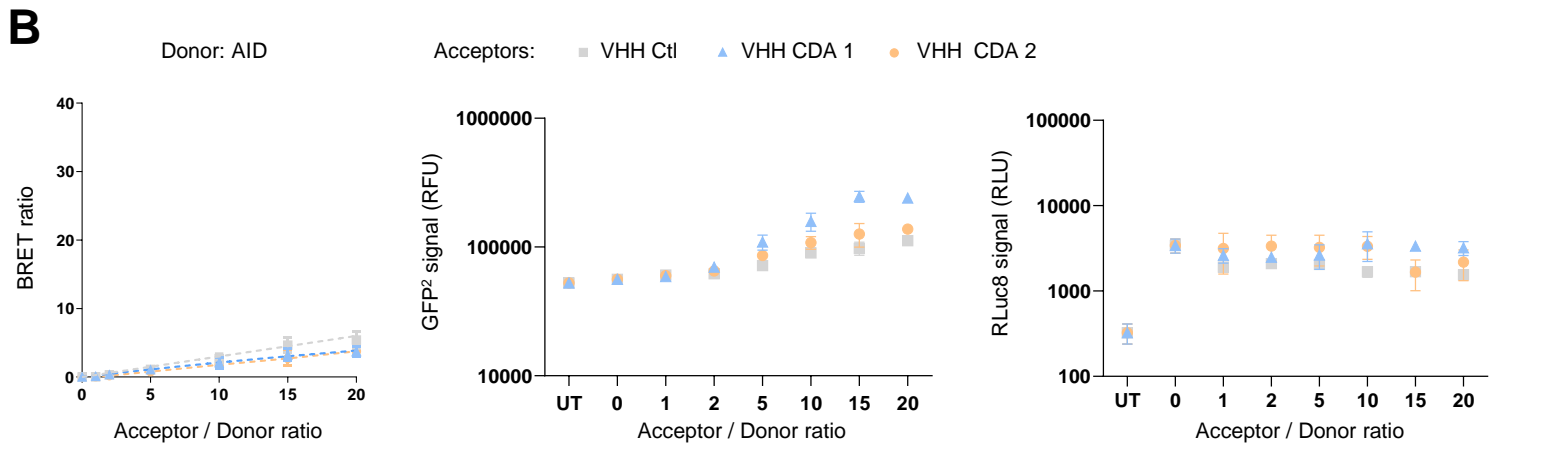
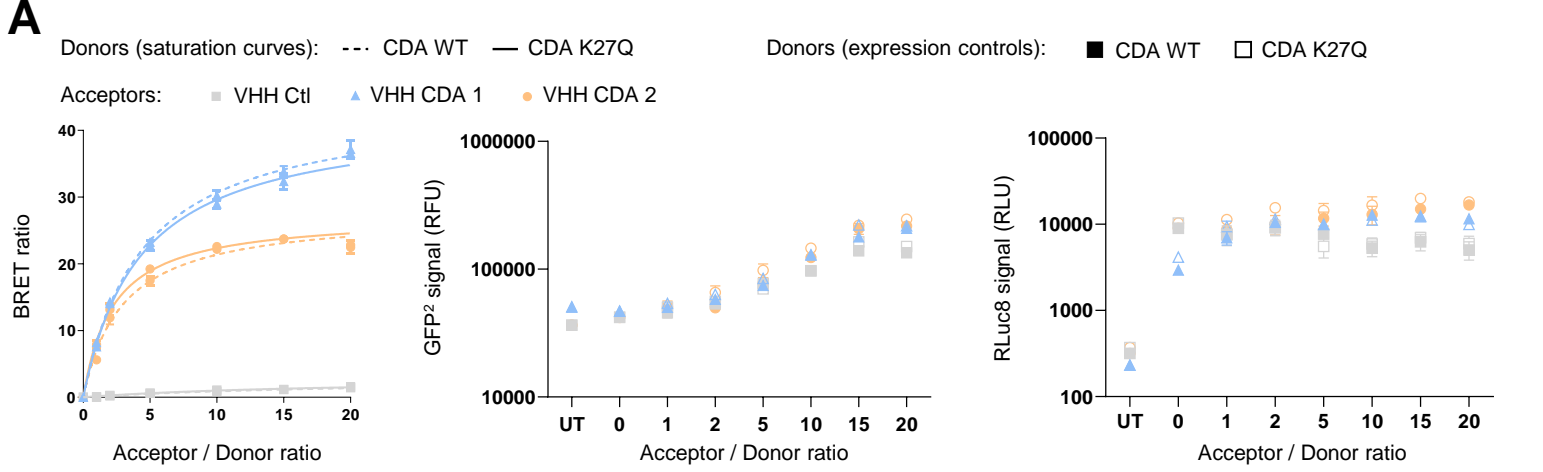


C

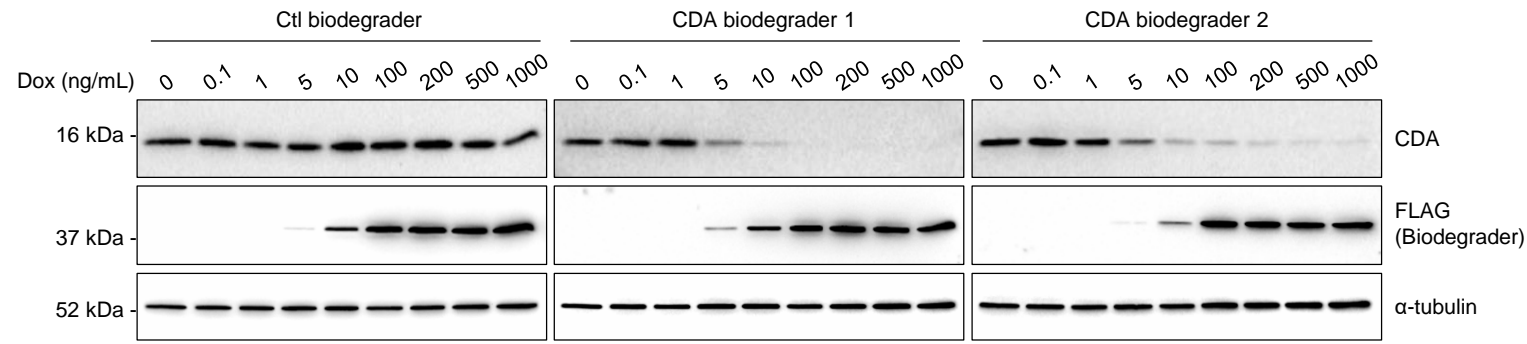
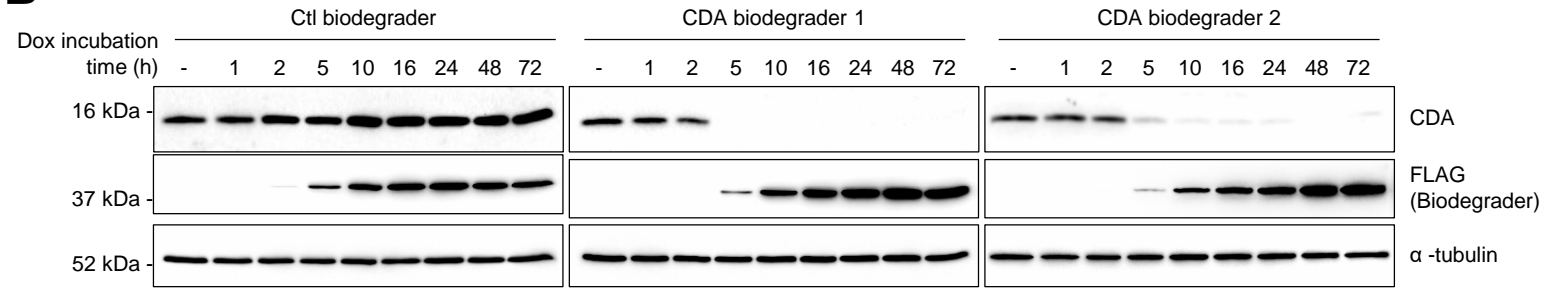
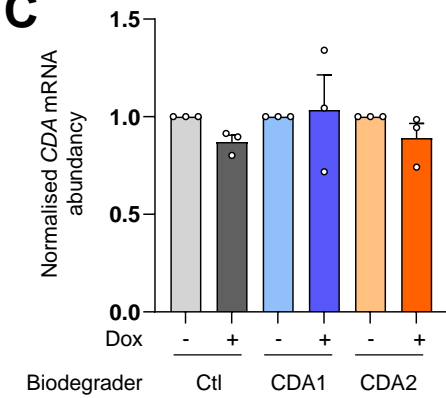
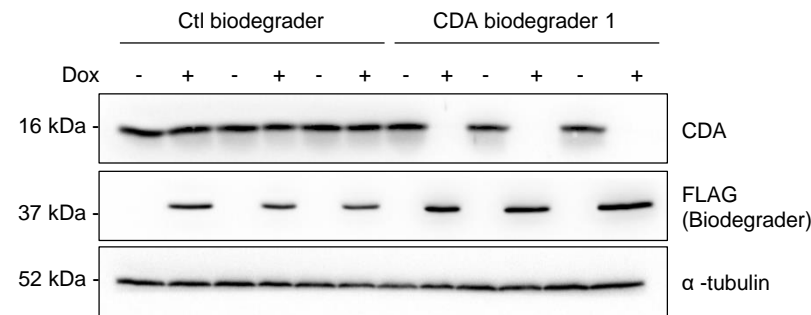
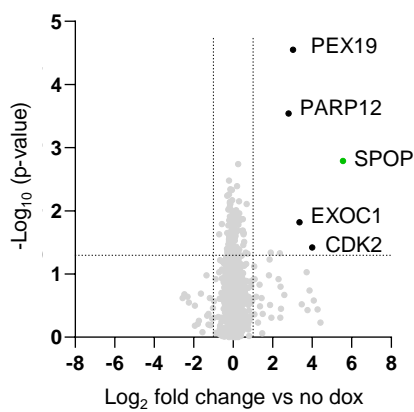
# clone	163	12	78	177	192	21	39	73	118	125	148	168	174	13	Total
# repetition	10	6	2	2	2	1	1	1	1	1	1	1	1	1	30



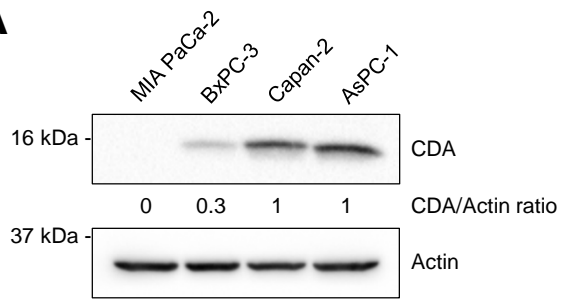
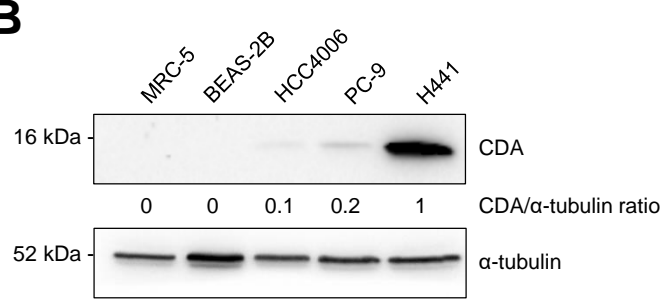
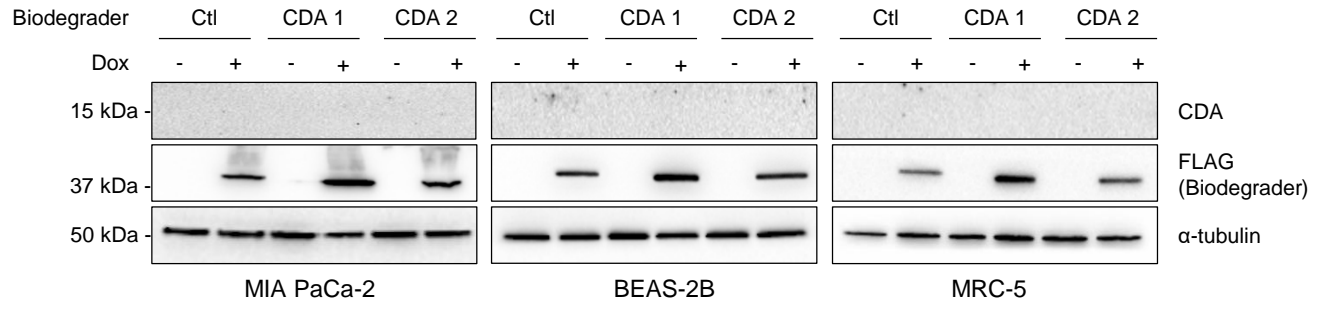
Supplementary Figure 1: Characterisation of the positive hits from the cell-based screening.



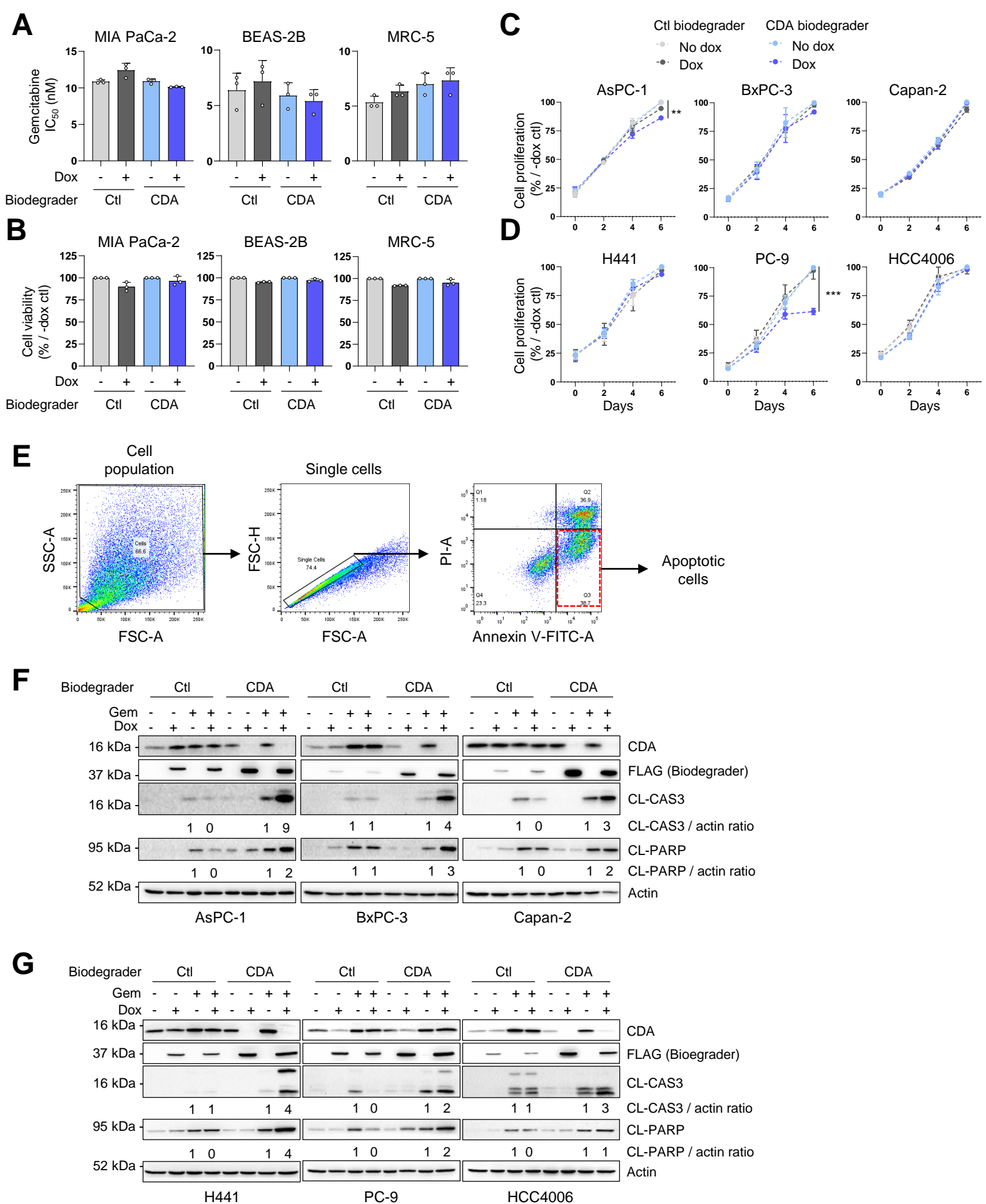
Supplementary Figure 2: Characterisation of anti-CDA VHs.

A**B****C****D****E**

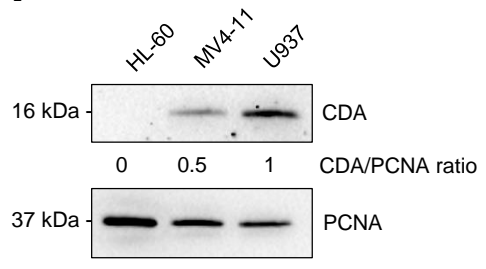
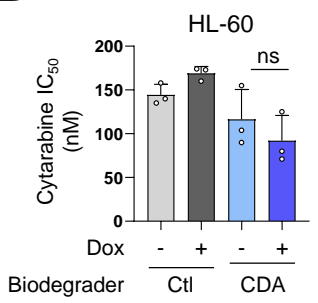
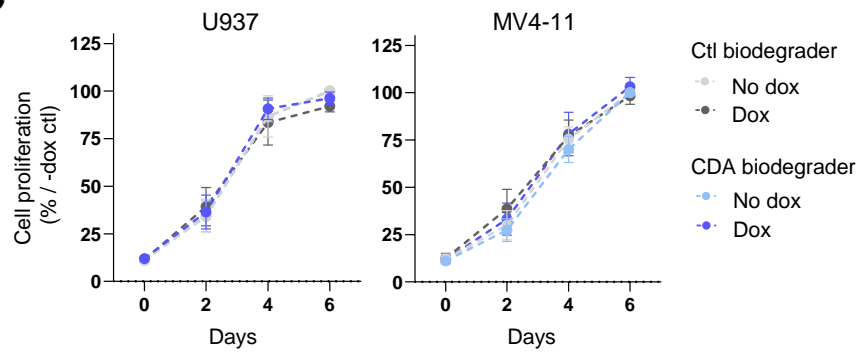
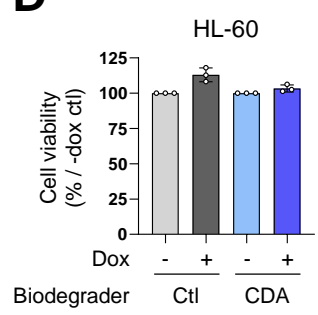
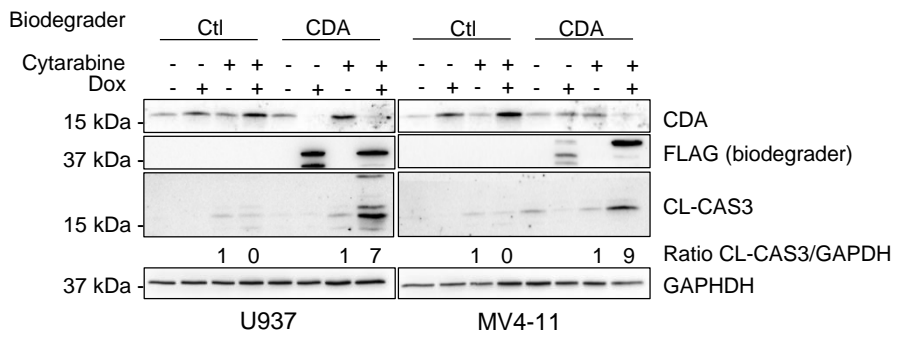
Supplementary Figure 3: Characterisation of CDA biodegraders in AsPC-1 pancreatic cancer cells.

A**B****C**

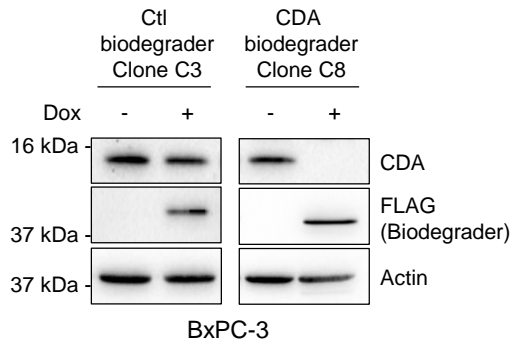
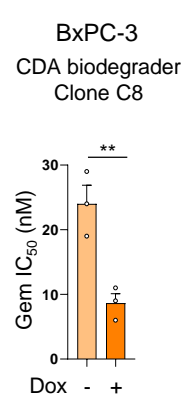
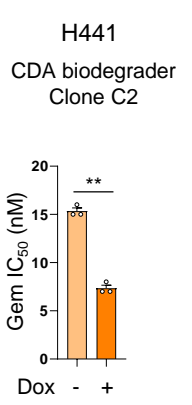
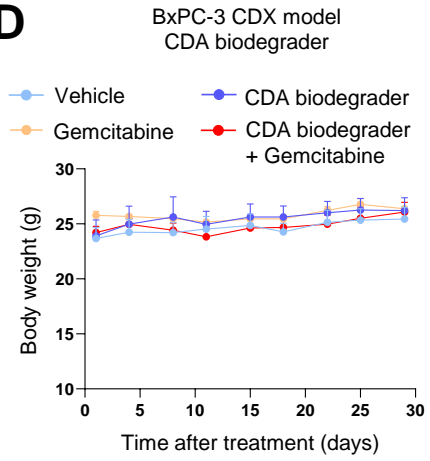
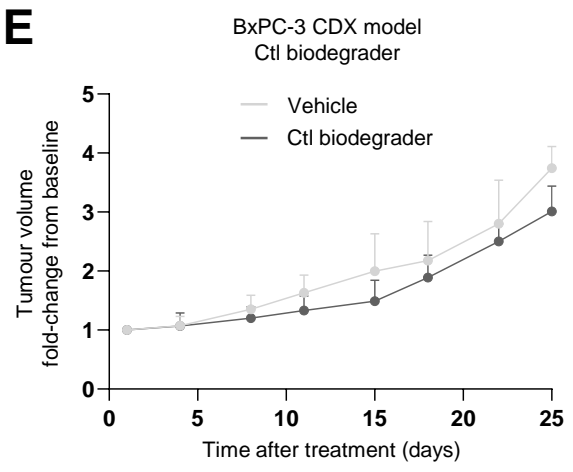
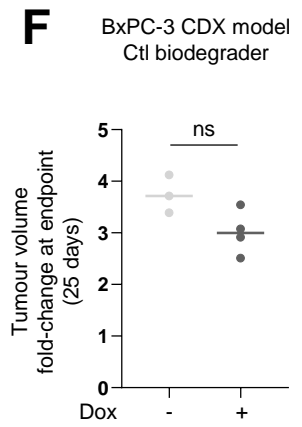
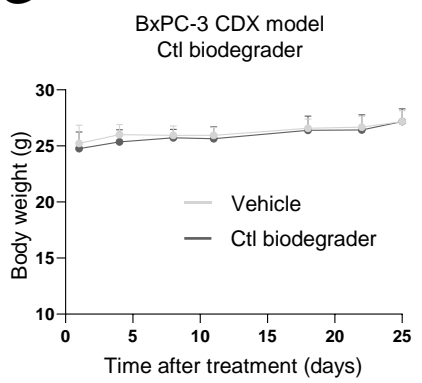
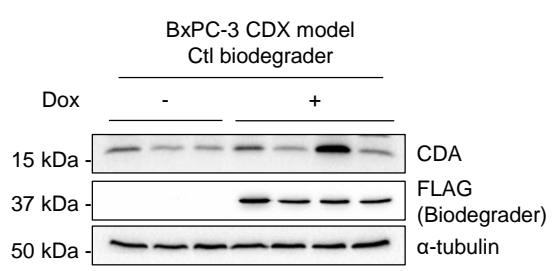
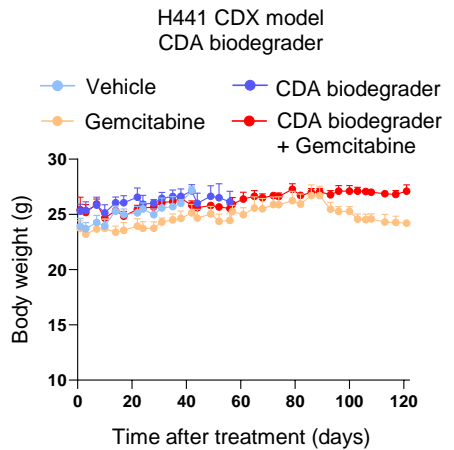
Supplementary Figure 4: CDA biodegraders effect on cells that do not express CDA.



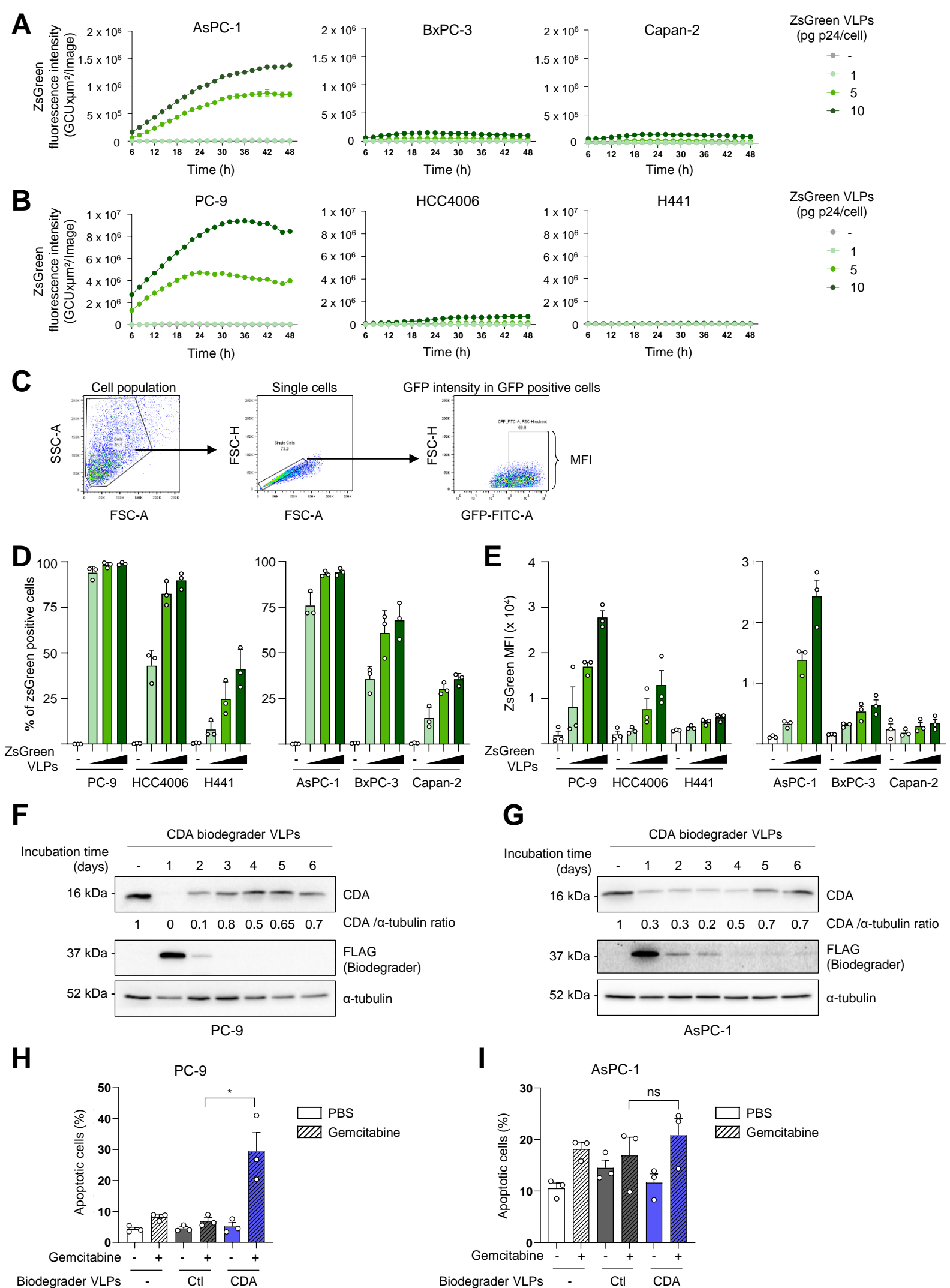
Supplementary Figure 5: Characterisation of CDA biodegrader effect on cell proliferation and apoptosis

A**B****C****D****E**

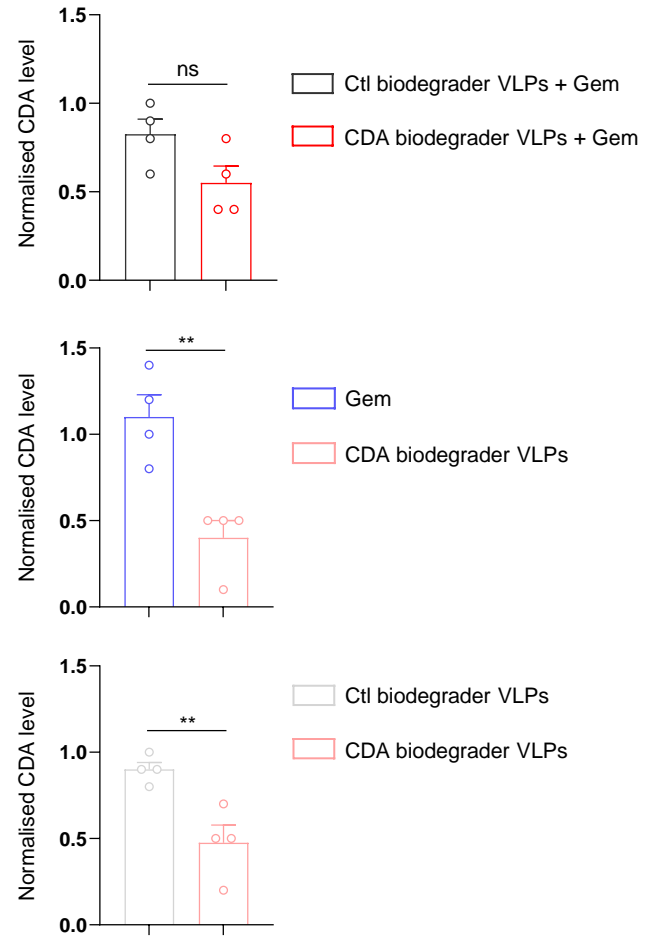
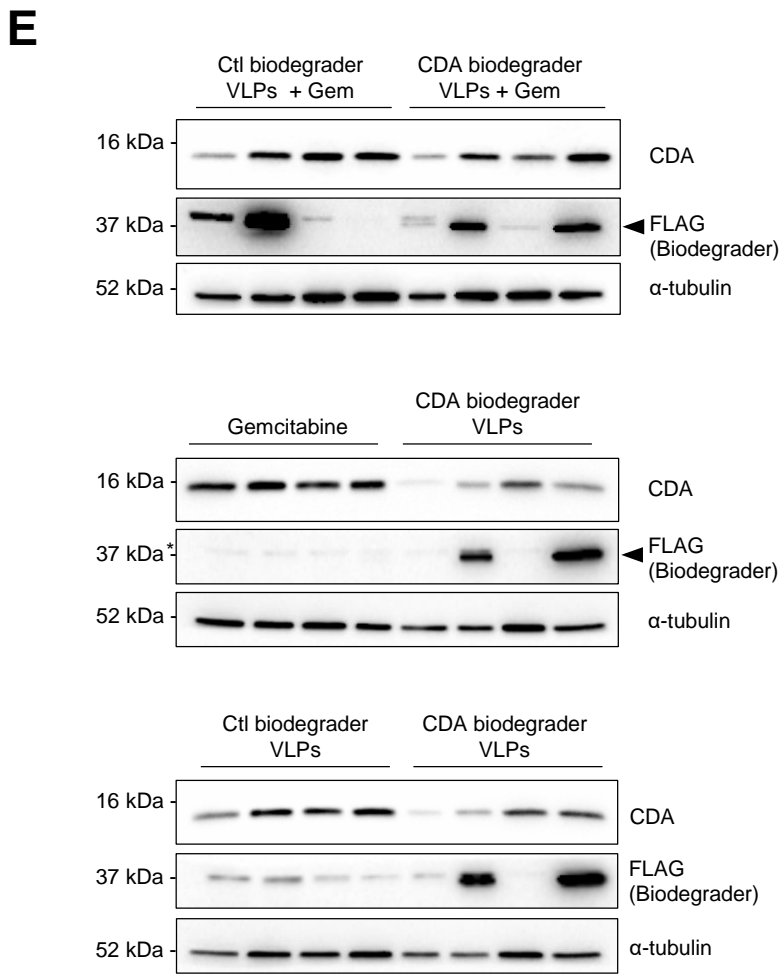
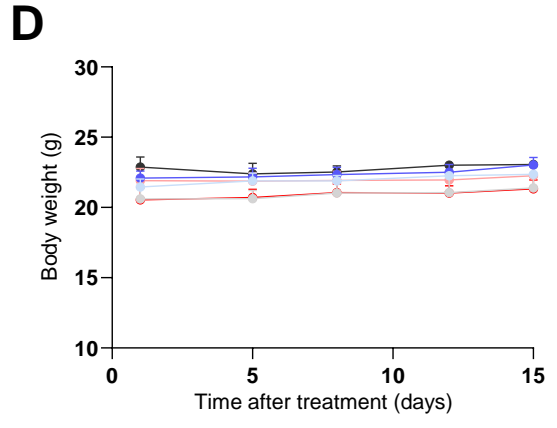
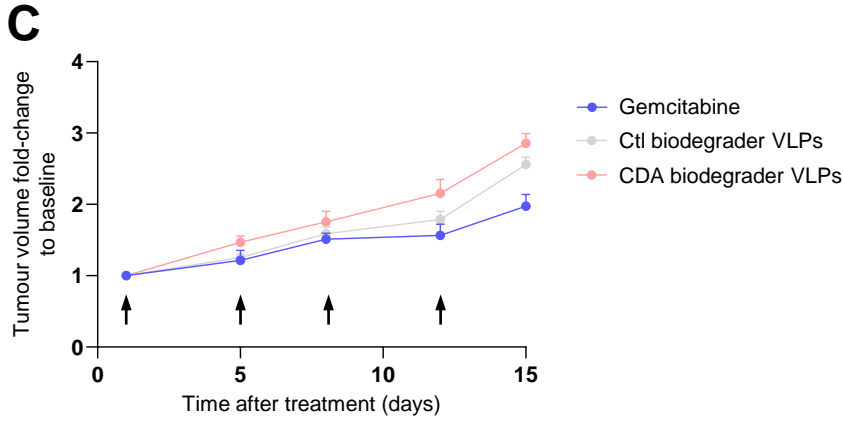
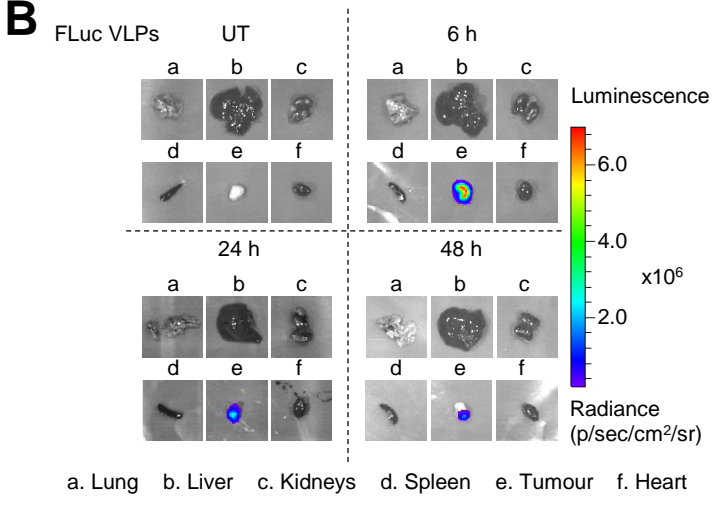
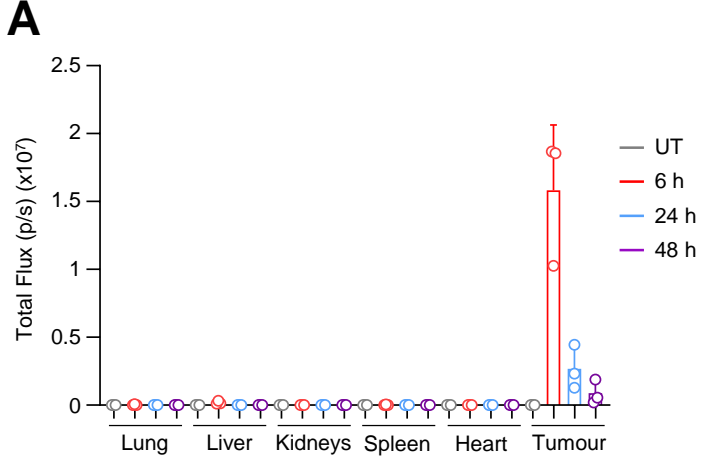
Supplementary Figure 6: Characterisation of CDA biodegrader in AML cells

A**B****C****D****E****F****G****H****I**

Supplementary Figure 7: Characterisation of BxPC-3 and H441 clones and effect of the Ctl biodegrader on tumour growth.



Supplementary figure 8: *In vitro* characterisation of CDA biodegrader mRNA delivery via VLPs in pancreatic and lung cancer cell lines.



Supplementary figure 9: *In vivo* characterisation of CDA biodegrader mRNA delivery via VLPs in a lung CDX model.