

886 **Supplementary Information**

887 **Supplementary Data**

888 Supplementary Data ([Table_S1_Subcountry_rankingofCCFR6.0.xlsx](#)) provide information
889 of CCFH (volume, depth, surface area of riverine, oceanic, and compunding hazard), CCFR
890 (exposure, vulnerability, and compunding risk), and other indicators at a 11 km resolution for
891 the globe. Each indicator can be ranked in either ascending or descending order of magnitude.

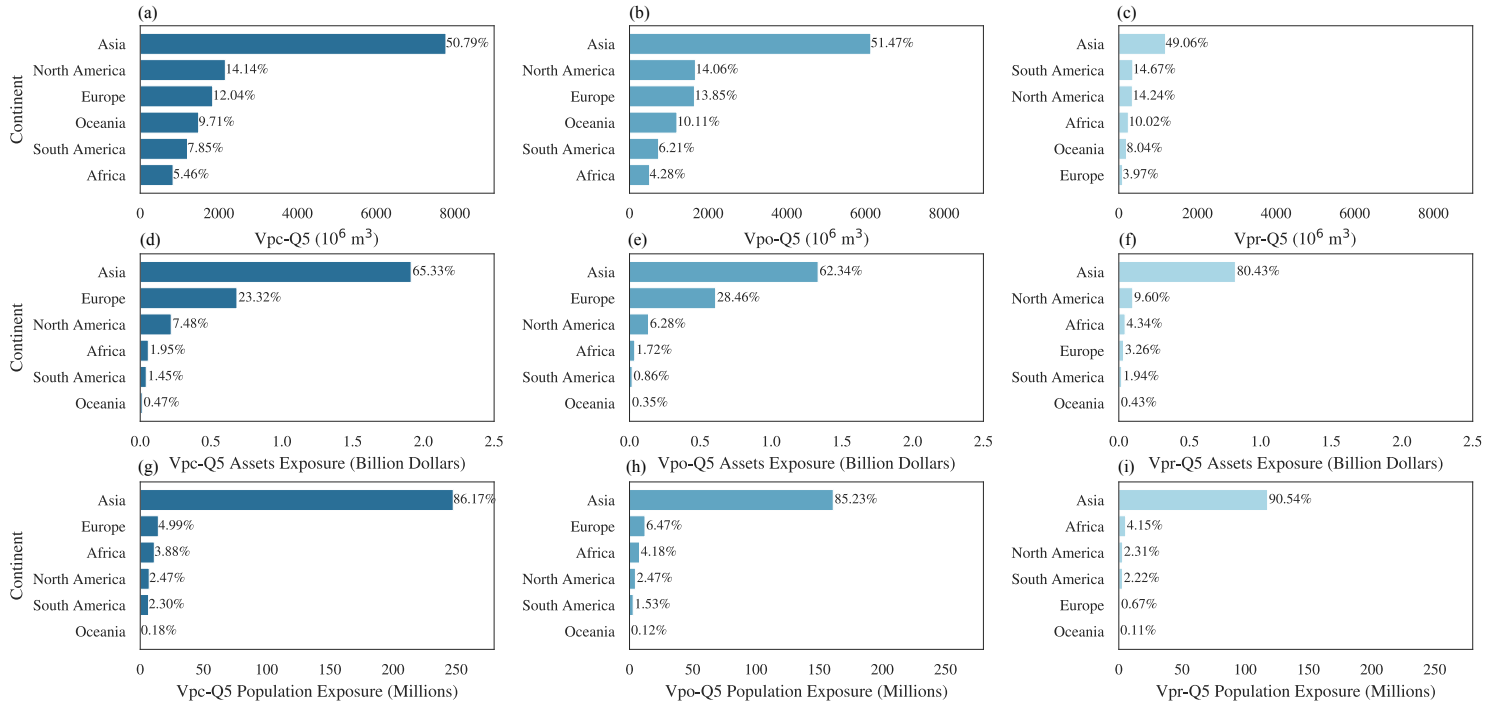


Figure S1: **Population and assets exposed to coastal compound (V_{pc}), riverine (V_{pr}), and oceanic (V_{po}) floods at the continent scale.** (a-c) continent rankings based on the share of high (the fifth quantile) V_{pc} , V_{po} , and V_{pr} ; (d-f) continent rankings based on the share of assets exposed to high V_{pc} , V_{po} , and V_{pr} ; (g-i) continent rankings based on the share of population exposed to high V_{pc} , V_{po} , and V_{pr} .

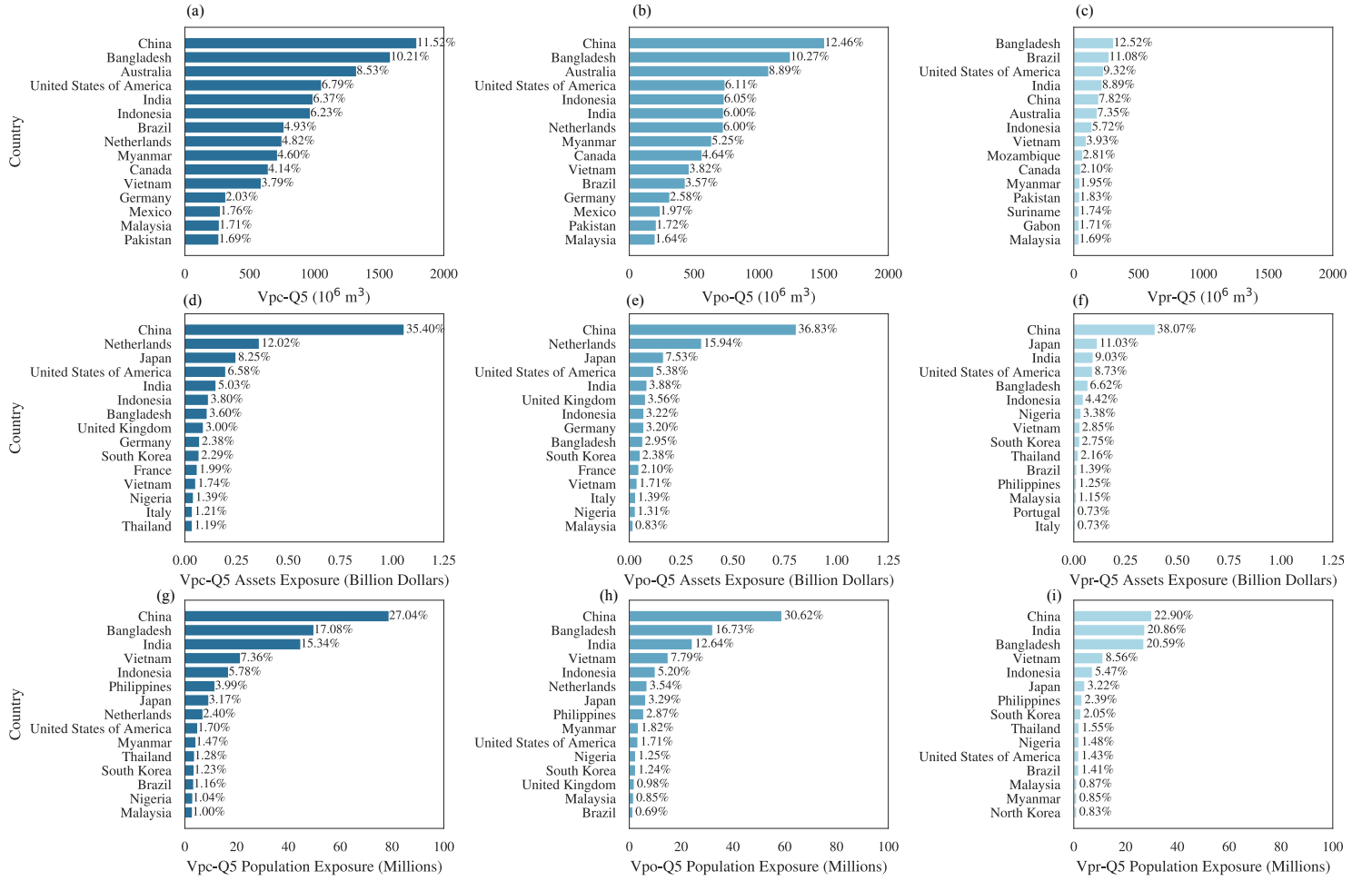


Figure S2: Population and assets exposed to coastal compound (V_{pc}), riverine (V_{pr}), and oceanic (V_{po}) flood volumetric hazard at the country scale. (a-c) country rankings based on the share of high (the fifth quantile) V_{pc} , V_{pc} , and V_{pc} ; (d-f) country rankings based on the share of assets exposed to high V_{pc} , V_{pc} , and V_{pc} ; (g-i) country rankings based on the share of population exposed to high V_{pc} , V_{pc} , and V_{pc} .

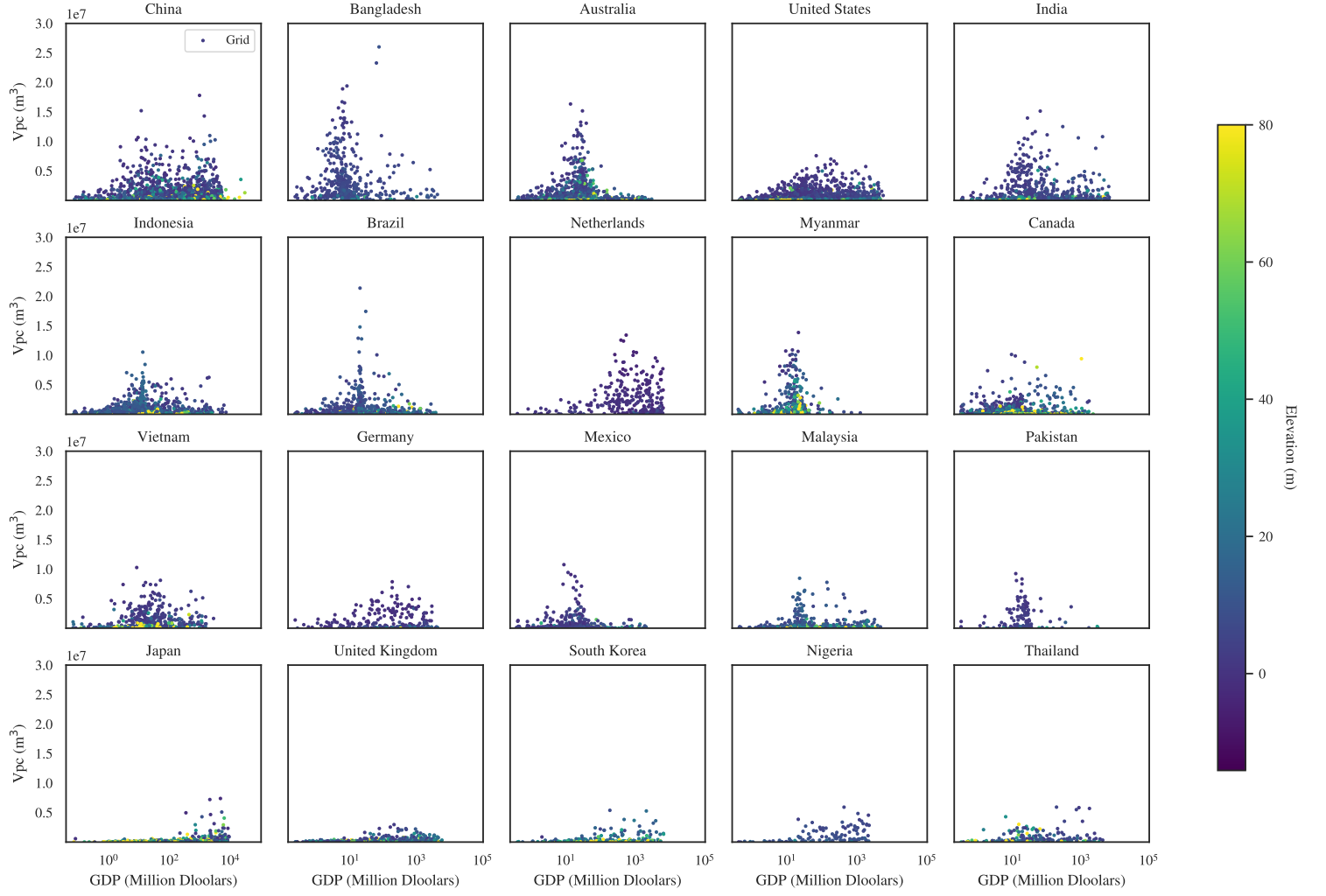


Figure S3: **CCFH-GDP pattern for the top 20 CCFH countries at $0.1^\circ \times 0.1^\circ$ grid scale.** The colors of the points is proportional to the elevation. Country's patterns are shown from the highest to the lowest CCFH (from top left to bottom right)