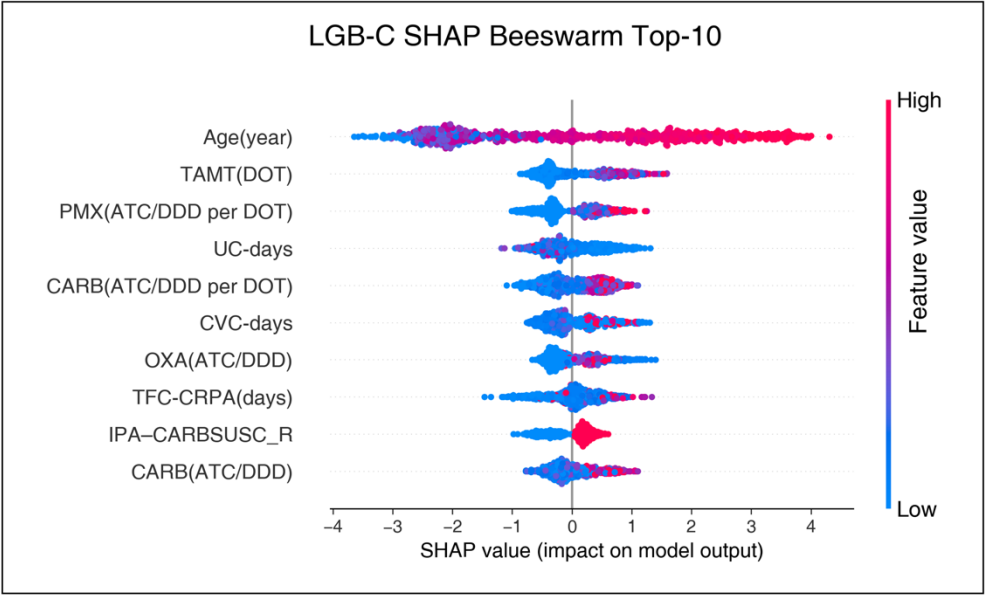
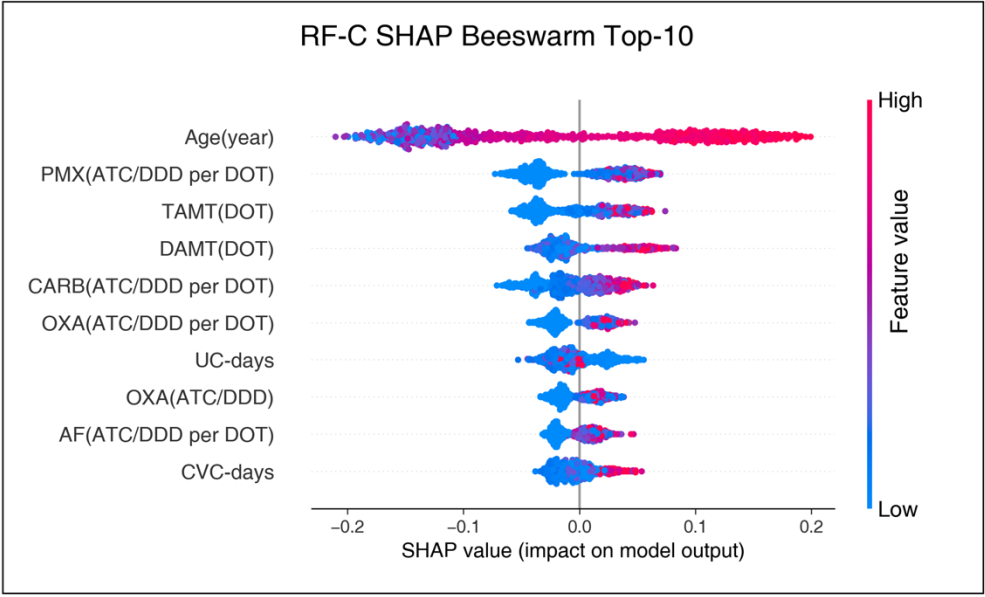


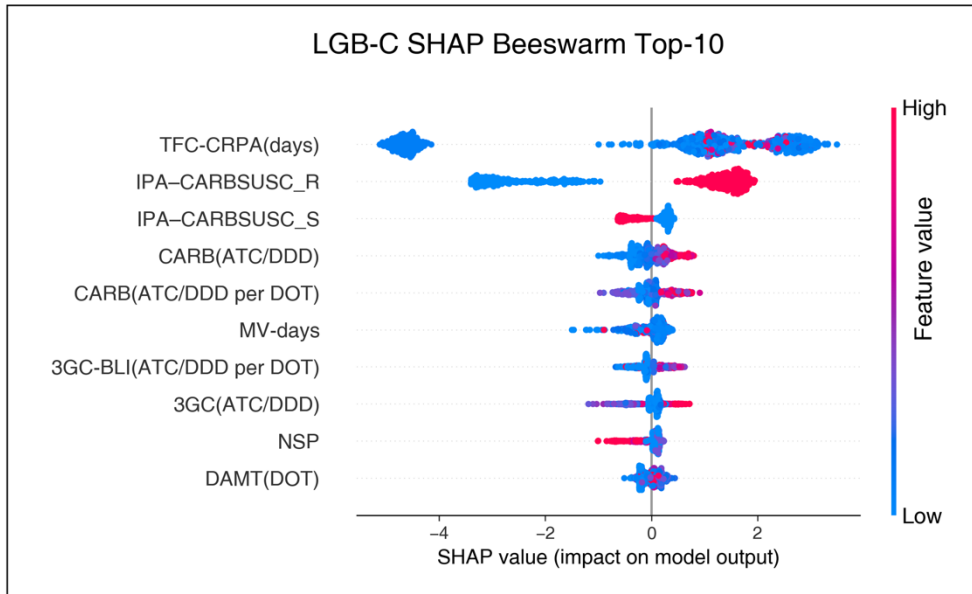
(a)



(b)



(c)



(d)

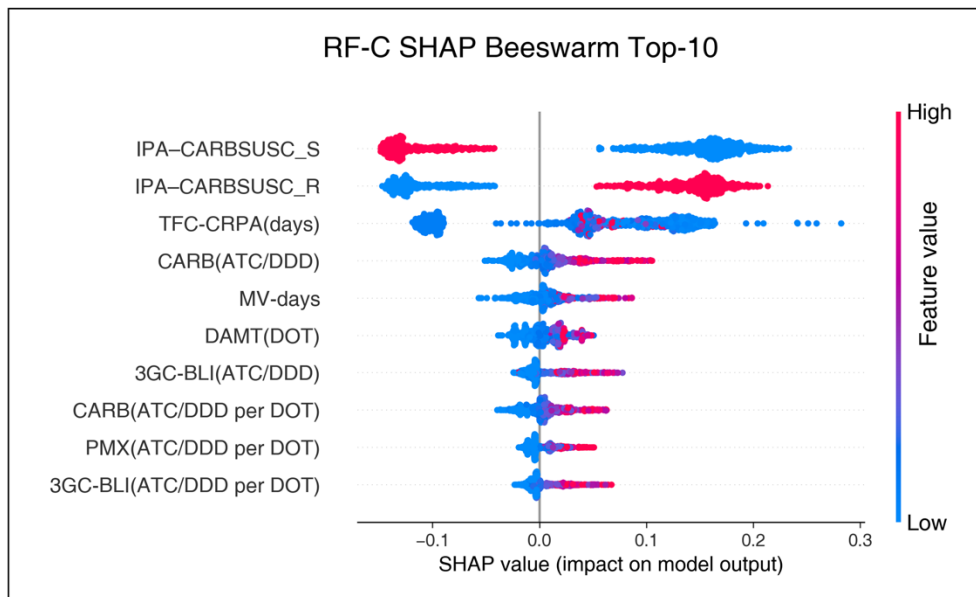


Fig. S5 Global SHAP beeswarm plots for two binary outcomes.

(a) LGB-C model for IHM; (b) RF-C model for IHM; (c) LGB-C model for LastPaAST; (d) RF-C model for LastPaAST. Each dot represents an individual SHAP value, with the color indicating a normalized feature value (blue = low; red = high). The features were ranked by the mean absolute SHAP value ($|\text{SHAP}|$), reflecting their relative contributions to the prediction. Only the top 10 features are shown; the SHAP values for all the remaining features are close to zero.