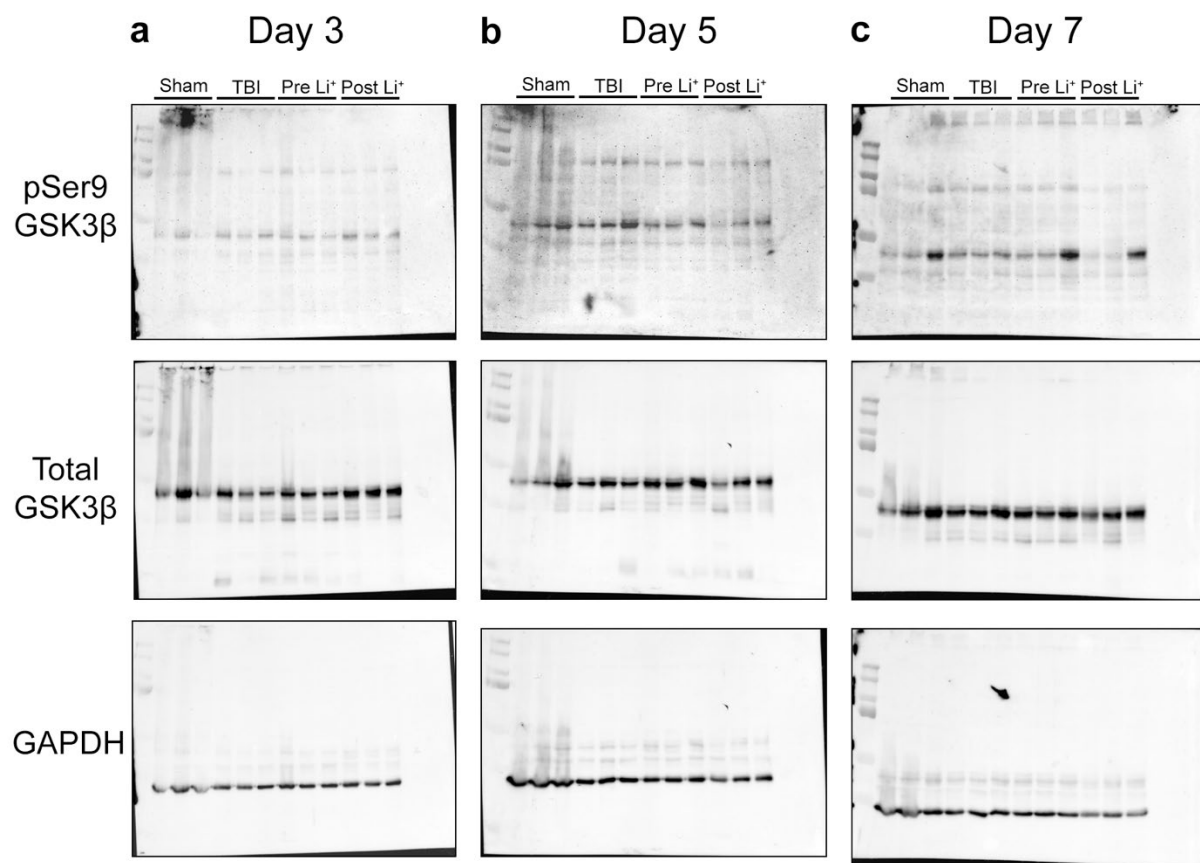
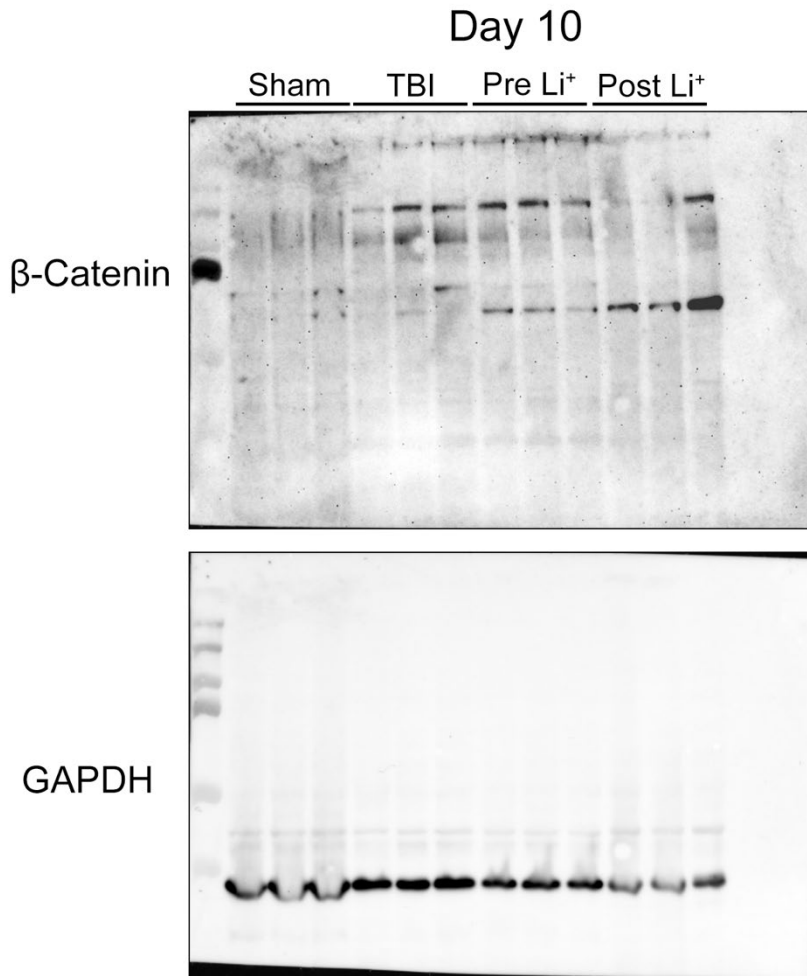


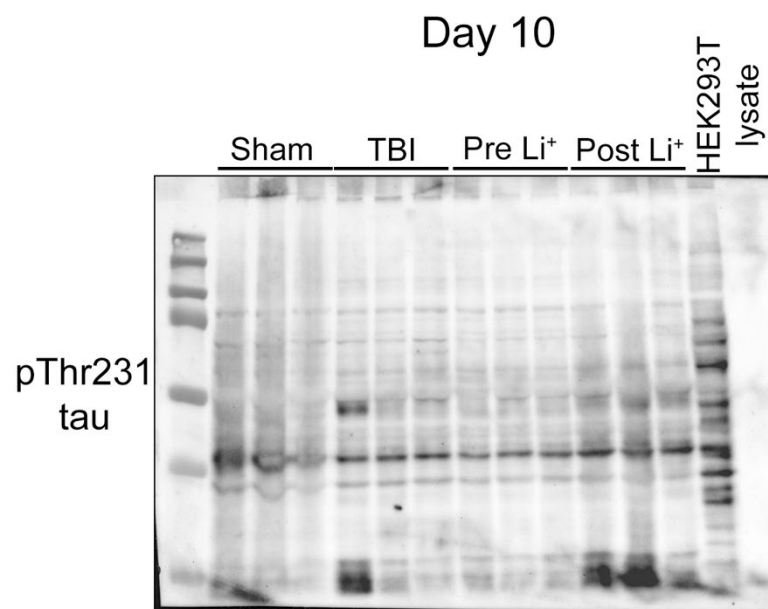
Supplemental Material 1 Raw uncropped immunoblot of rodent brain lysates from sham, TBI, TBI + Pre Li⁺, and TBI + Post Li⁺ subjects at day 10 probed for pSer9 GSK3 β and re-probed for Total GSK3 β and GAPDH.



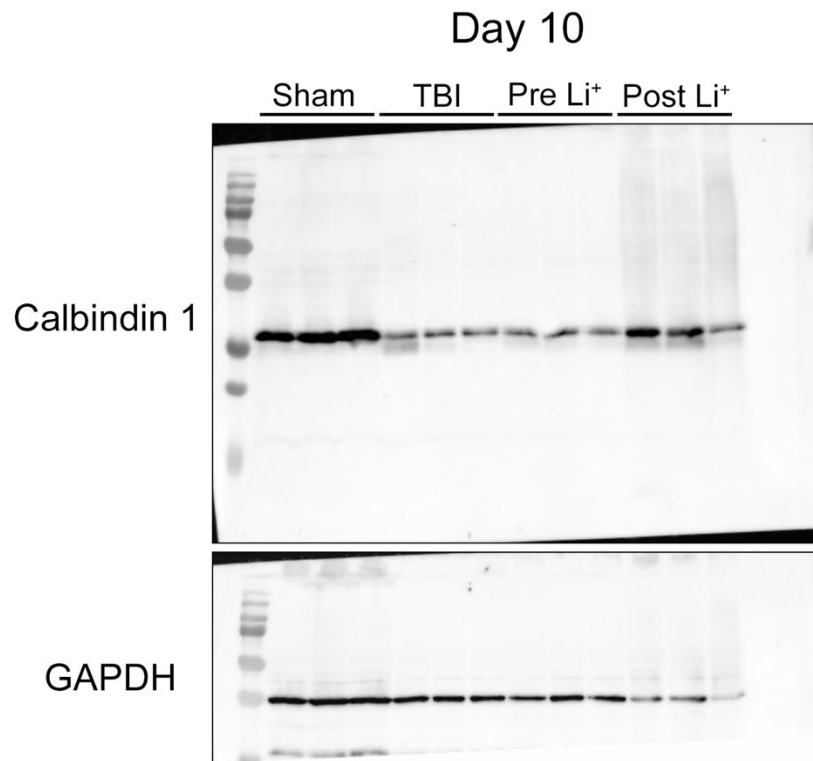
Supplemental Material 2 Raw uncropped immunoblot of rodent brain lysates from sham, TBI, TBI + Pre Li⁺, and TBI + Post Li⁺ subjects at (a) day 3, (b) day 5, and (c) day 7 probed for pSer9 GSK3β and re-probed for Total GSK3β and GAPDH.



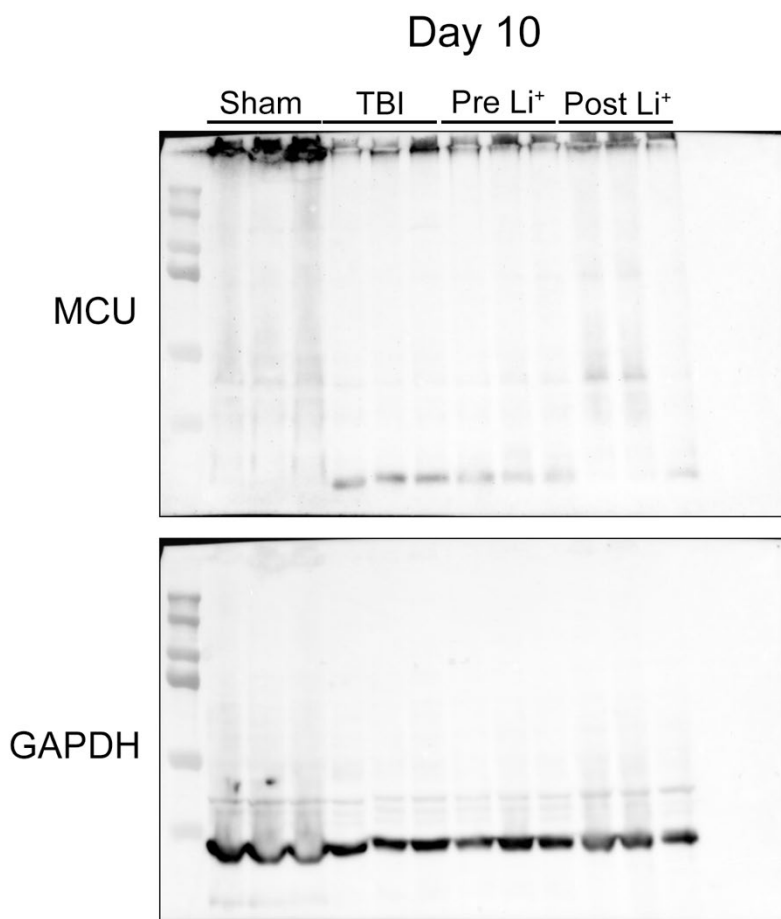
Supplemental Material 3 Raw uncropped immunoblot of rodent brain lysates from sham, TBI, TBI + Pre Li⁺, and TBI + Post Li⁺ subjects at day 10 probed for β-catenin and re-probed for GAPDH.



Supplemental Material 4 Raw uncropped immunoblot of rodent brain lysates from sham, TBI, TBI + Pre Li⁺, and TBI + Post Li⁺ subjects at day 10 probed for pThr231 tau.

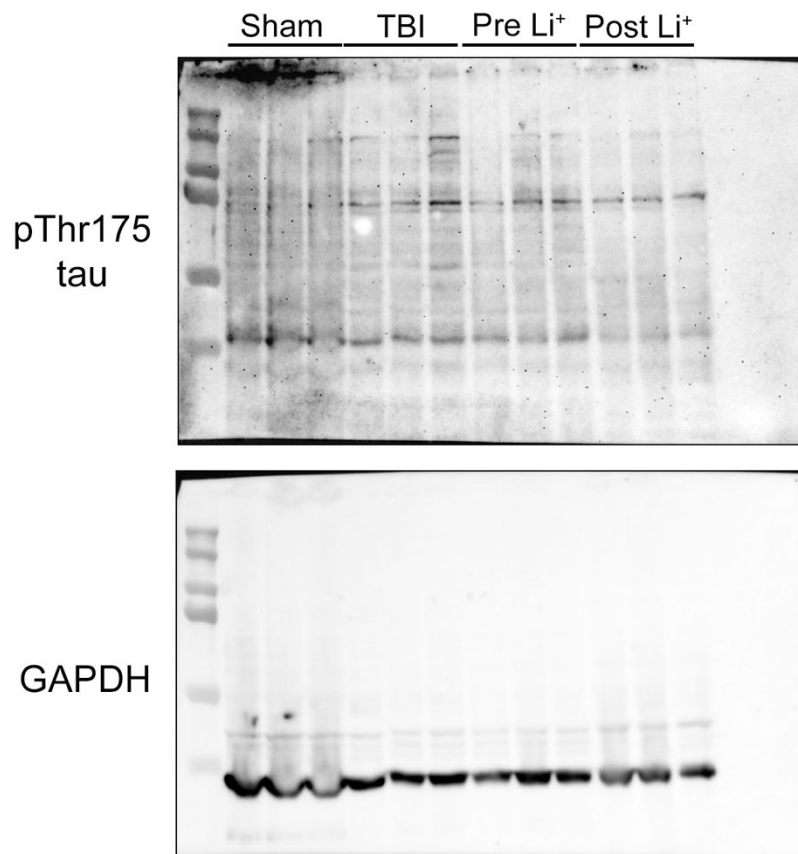


Supplemental Material 5 Raw uncropped immunoblot of rodent brain lysates from sham, TBI, TBI + Pre Li⁺, and TBI + Post Li⁺ subjects at day 10 probed for Calbindin 1 and re-probed for GAPDH.



Supplemental Material 6 Raw uncropped immunoblot of rodent brain lysates from sham, TBI, TBI + Pre Li⁺, and TBI + Post Li⁺ subjects at day 10 probed for MCU and GAPDH.

Day 10



Supplemental Material 7 Raw uncropped immunoblot of rodent brain lysates from sham, TBI, TBI + Pre Li⁺, and TBI + Post Li⁺ subjects at day 10 probed for pThr175 tau and re-probed for GAPDH.