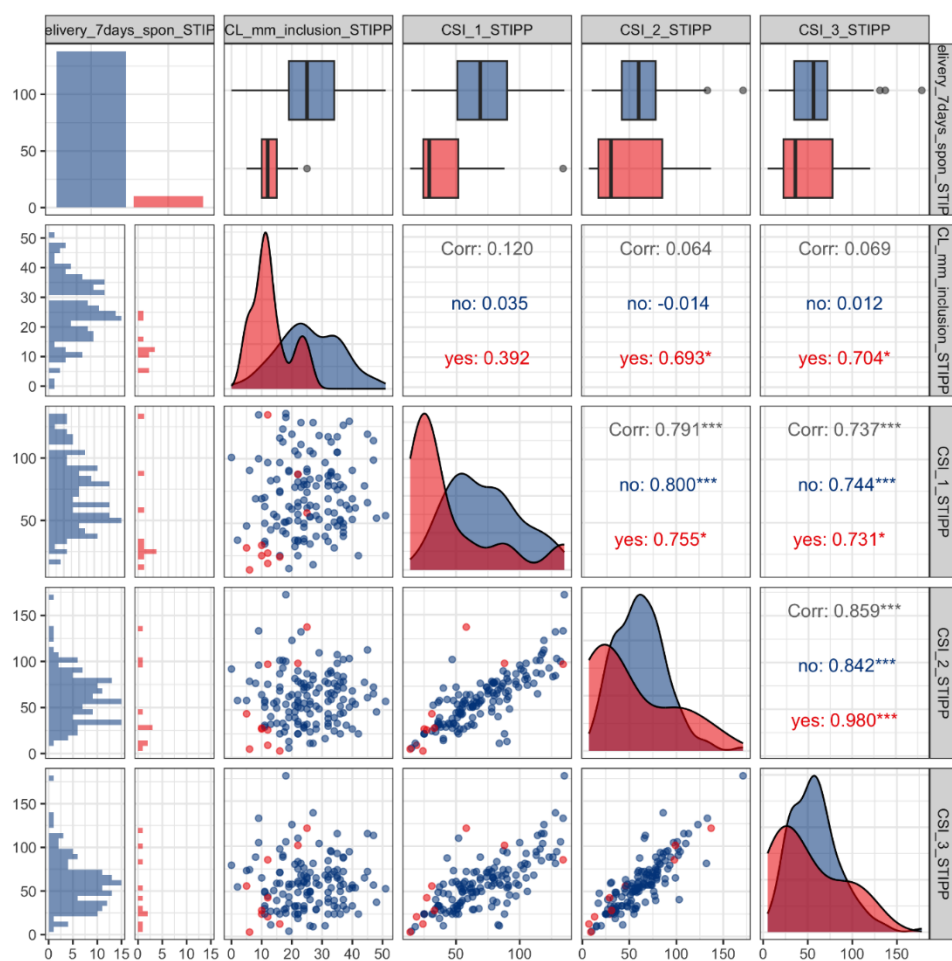


Appendix figure S1: Codistributions and correlations between cervical length, cervical stiffness index (CSI), and the primary outcome (preterm birth within 7 days).



The colour red represent patients with outcome, the colour blue represent patients without outcome.

The diagonal line represents the distributions of the variable in the column, given the outcome.

The bottom left part shows the codistribution of the variable of that column together with the variable of that row. Mirroring these codistributions, on the other side of the diagonal, the Spearman correlation coefficients are shown (grey represents the correlation of the entire group); * $p < 0.05$, ** $p < 0.01$, *** $p < 0.001$.