

Novel Senolytic Ingredient, [*Camellia sinensis*](#) Root Extract, Ameliorates Skin Aging-Associated Phenotypes

Sunyoung Park[†], Siyoung Cho[†], Daejin Min, Hyunjung Choi, Kyeonghwan Hwang, In Sup Kil, Won-Seok Park, Hyoung-June Kim*

Research and Innovation Center, Amorepacific, Yongin, Republic of Korea

* Corresponding author: Hyoung-June Kim, Research and Innovation Center, Amorepacific, 1920 Yonggu-daero, Giheung-gu, Yongin-si, Gyeonggi-do, Republic of Korea

Fax : 82-31-899-2595

Tel : 82-31-899-5827

E-mail: leojune@amorepacific.com

[†]These authors contributed equally to this work.

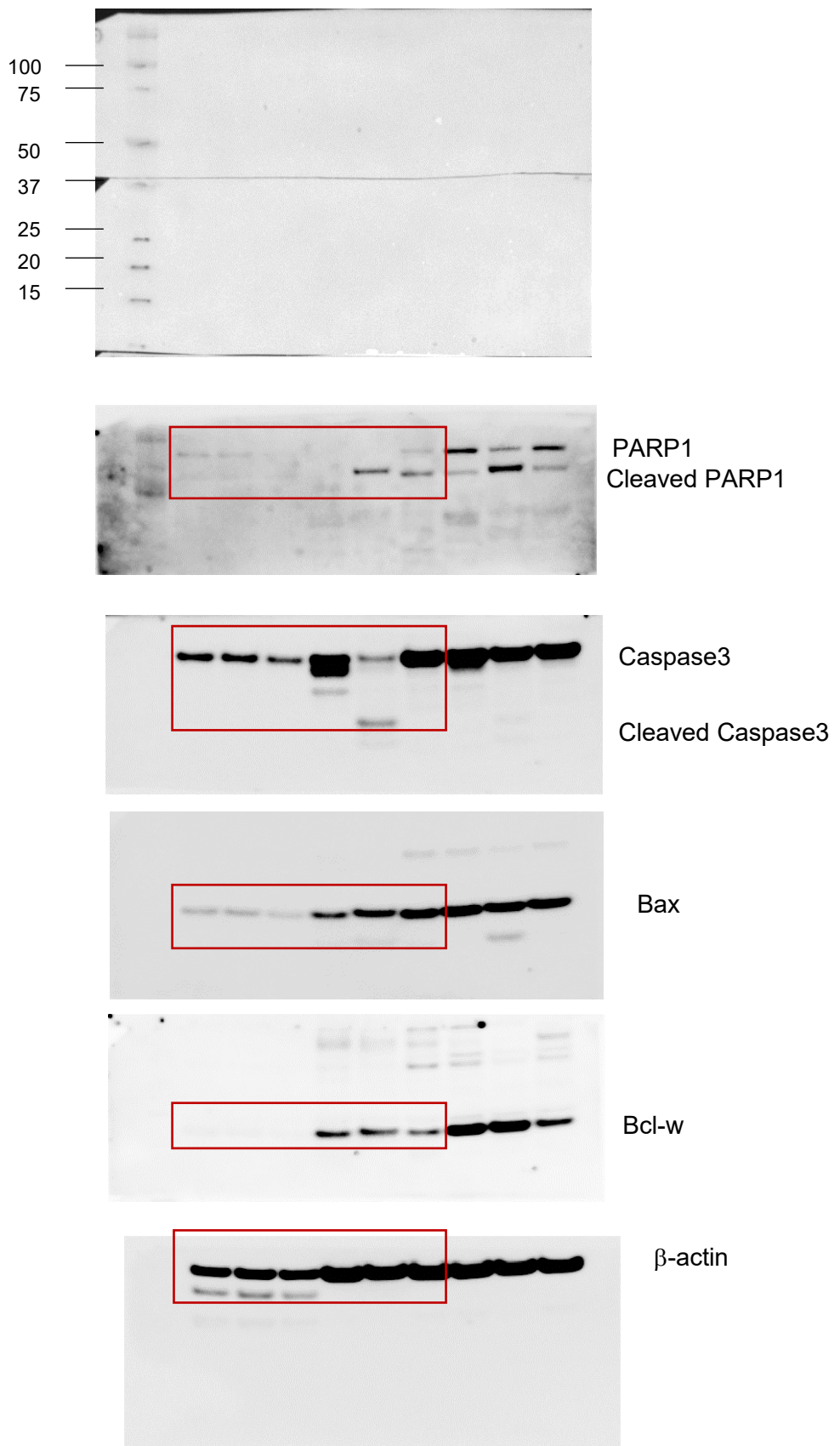


Figure.S4 Full-length Western blot images corresponding to Figure 2C in the manuscript.

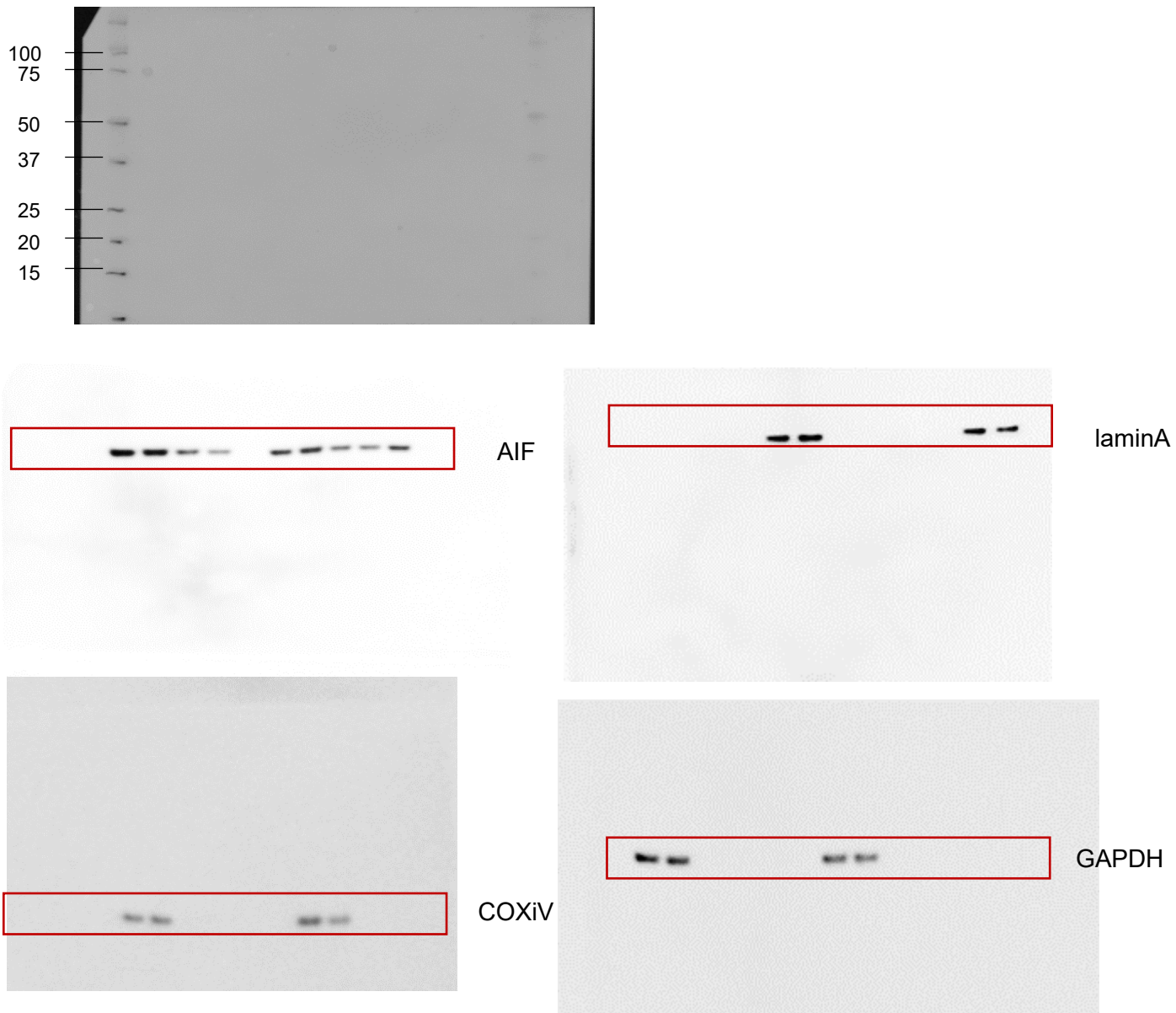


Figure.S5 Full-length Western blot images corresponding to Figure 2D in the manuscript.

[Figure 3A]

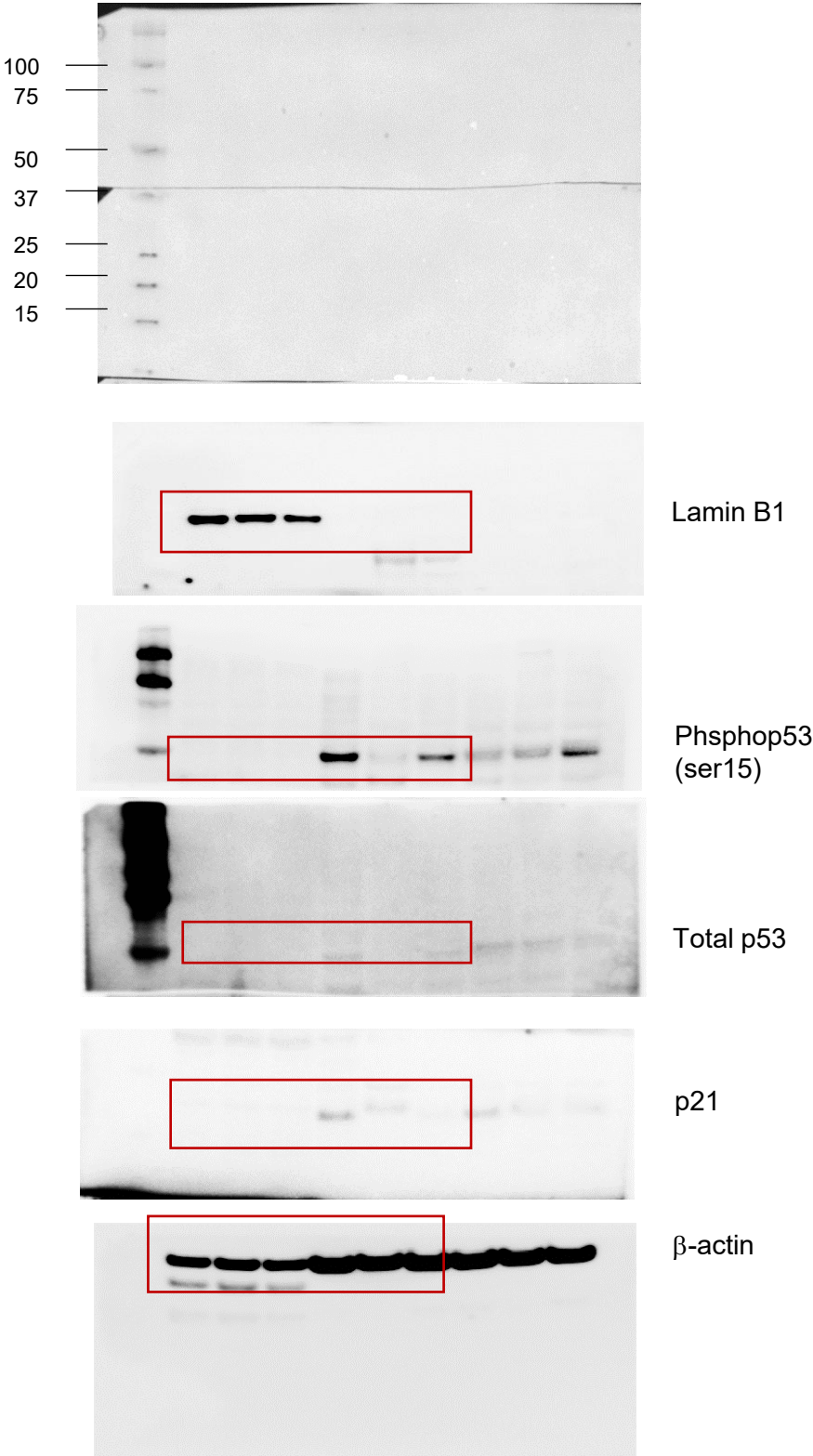


Figure.S6 Full-length Western blot images corresponding to Figure 3A in the manuscript.

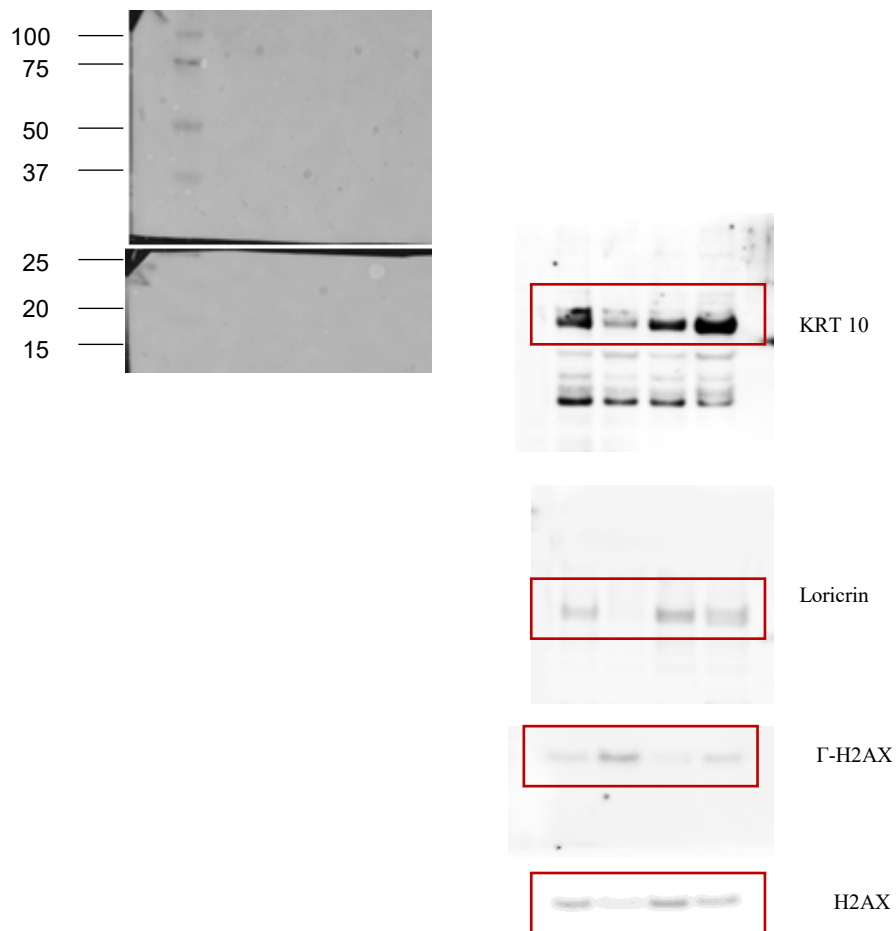


Figure.S7 Full-length Western blot images corresponding to Figure 4A in the manuscript.

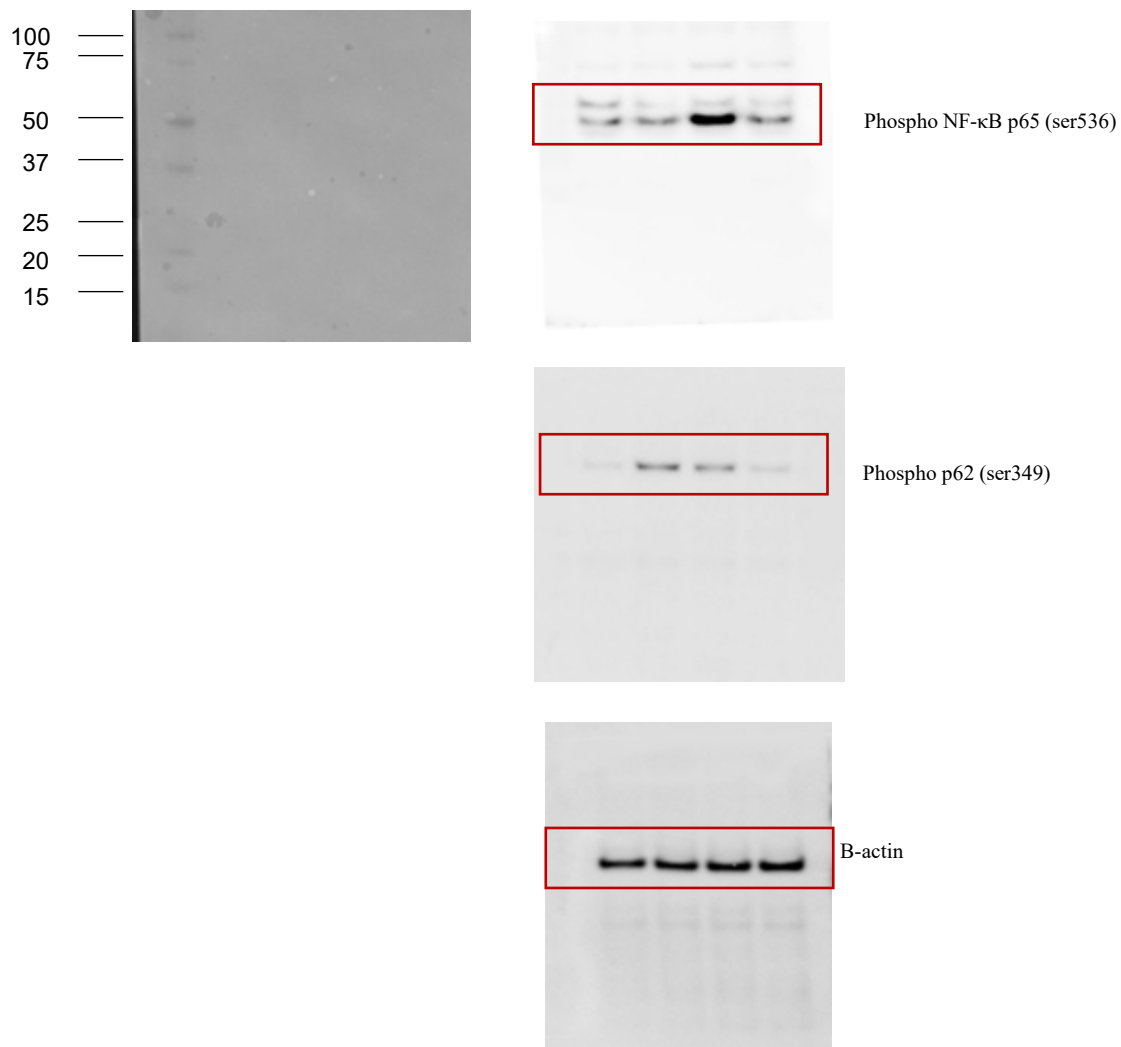


Figure.S8 Full-length Western blot images corresponding to Figure 5C in the manuscript.

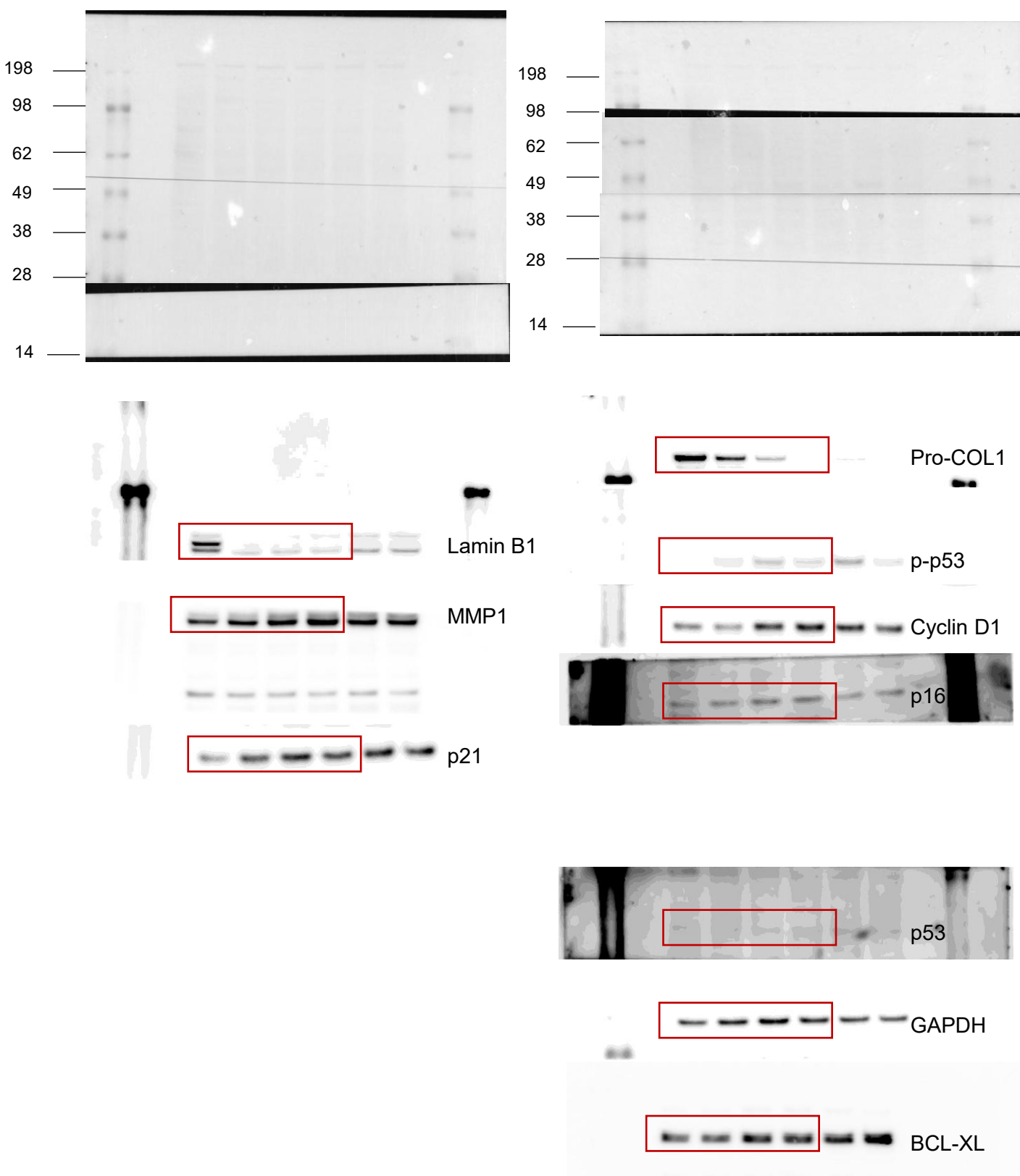


Figure.S9 Full-length Western blot images corresponding to Supple Figure 1C in the manuscript.

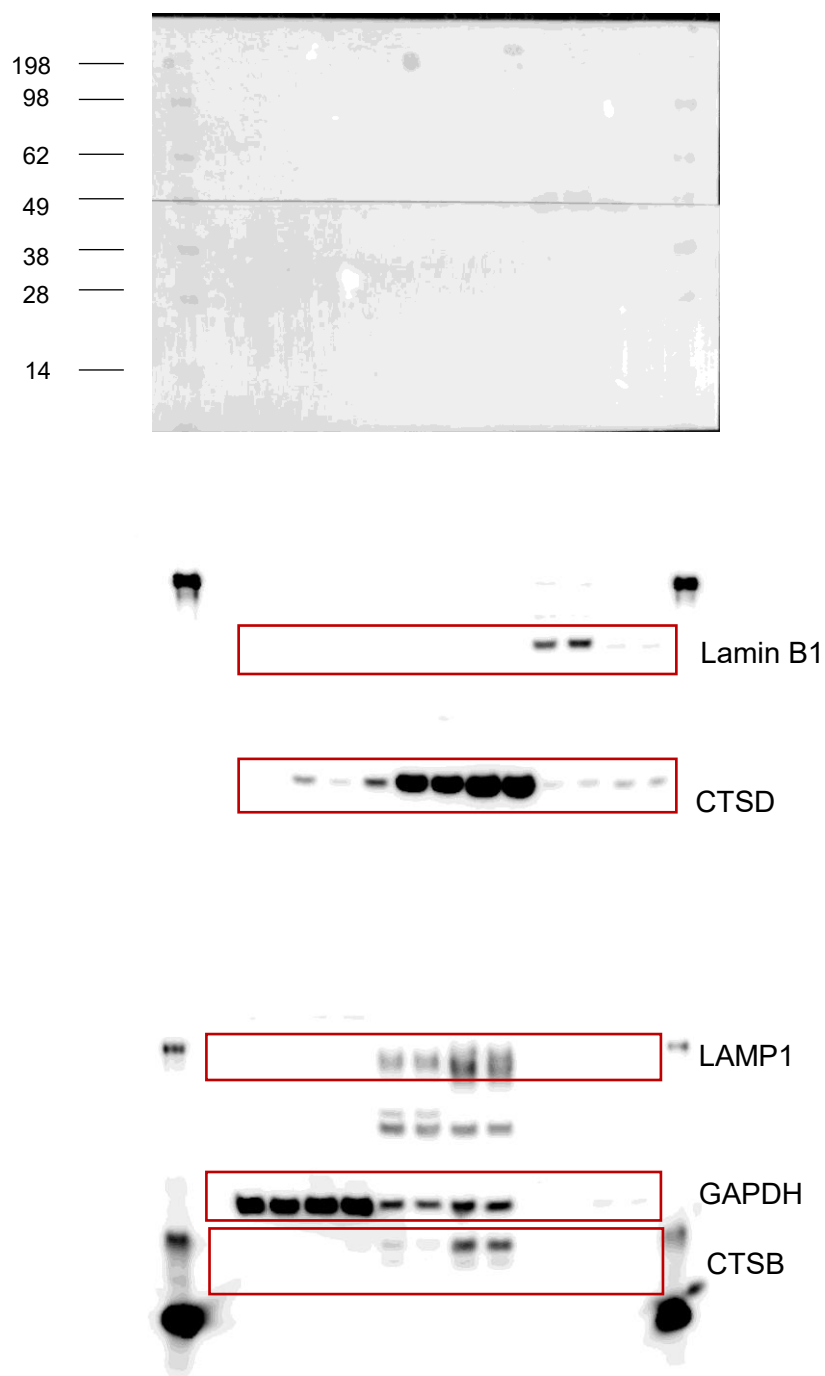


Figure.S10 Full-length Western blot images corresponding to Supple Figure 3 in the manuscript.