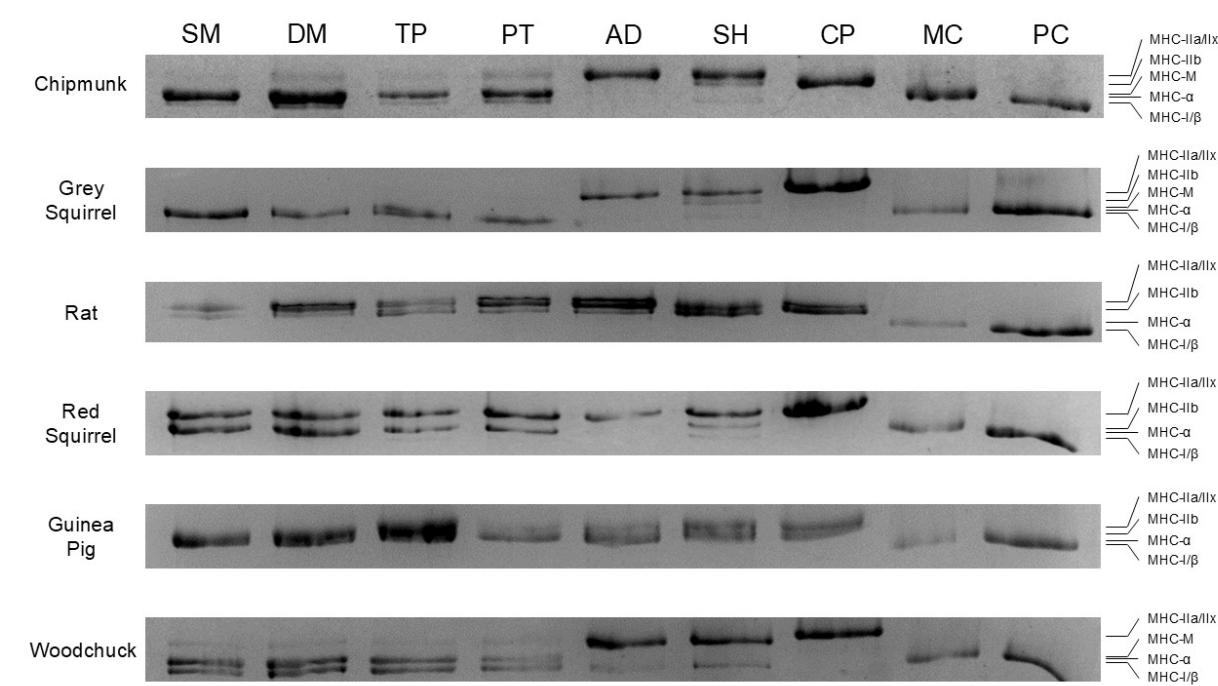
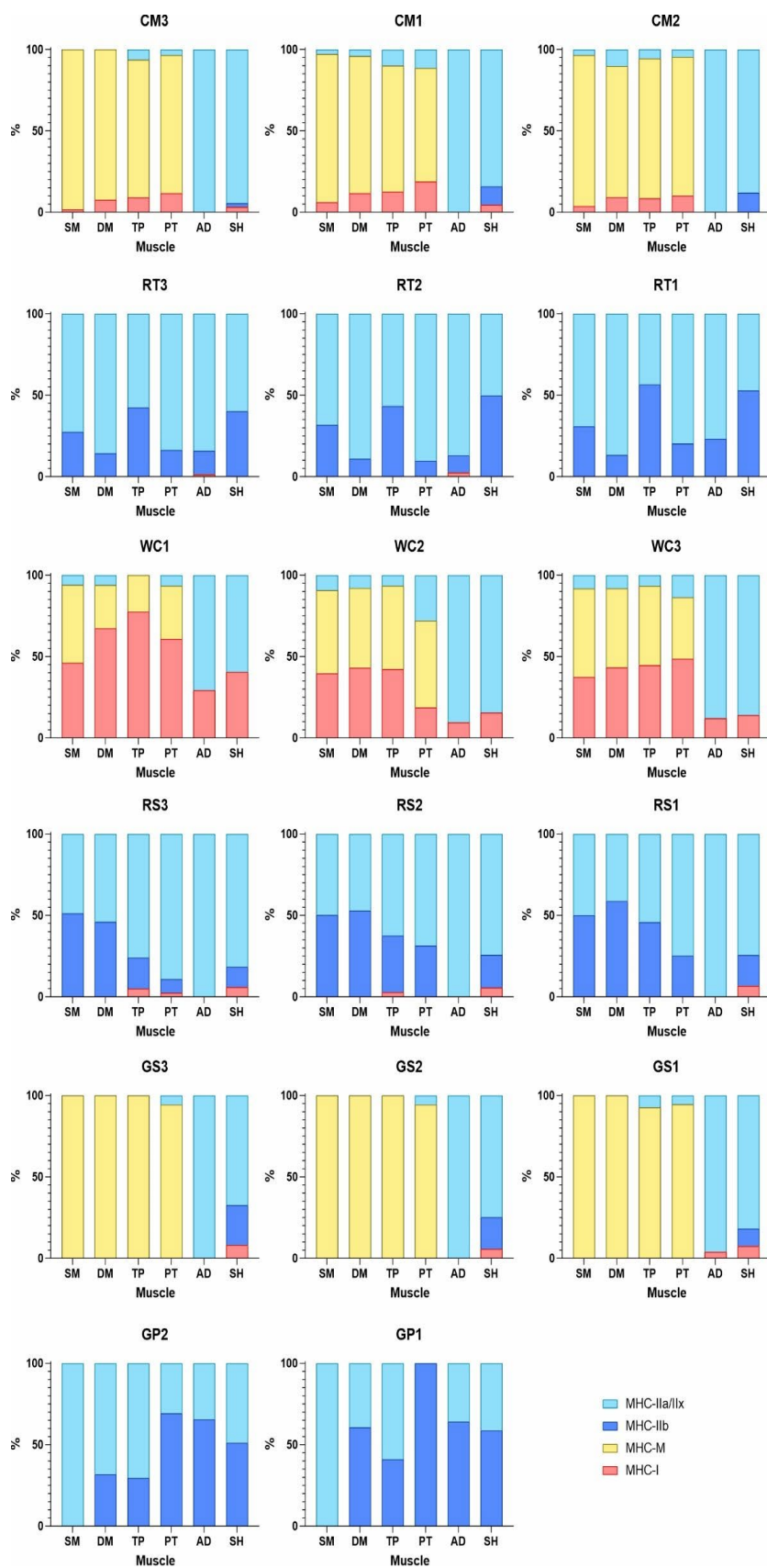


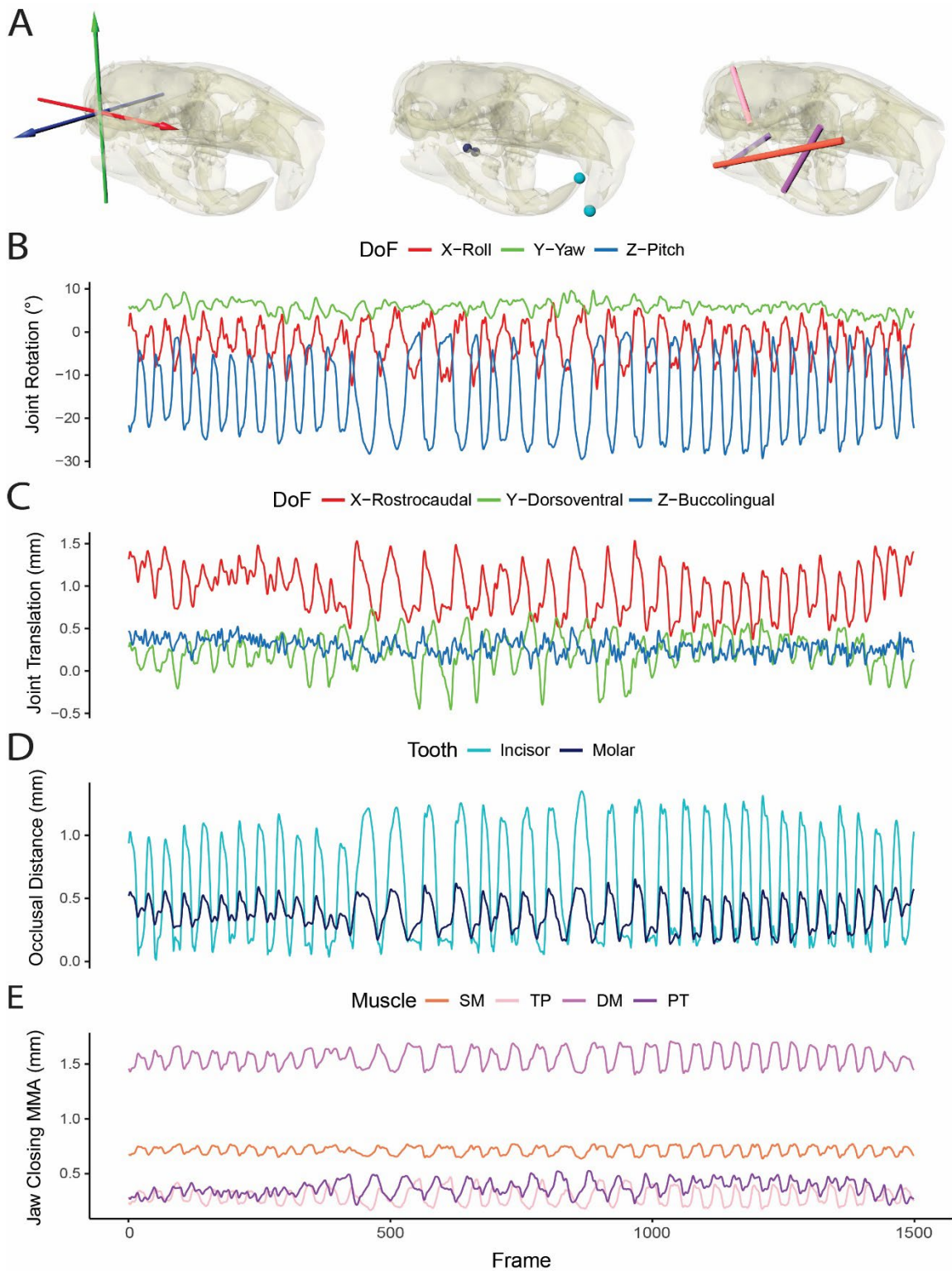
Supplementary Figures



Supplemental figure 1. Example SDS-PAGE gels showing myosin isoform composition of each muscle across rodent species. Myosin isoforms expressed in each species are listed to the right of each gel in migration order. SM, superficial masseter; DM, deep masseteric complex; TP, temporalis; PT, pterygoid complex; AD, anterior digastric; SH, sternohyoid. Controls: CP, chicken pectoralis ; MC, mouse cardiac ; PC, porcine cardiac.



Supplemental Figure 2. SDS-page data showing myosin isoform composition across muscles and individuals.



Supplemental Figure 3. Models showing the orientations of the axes used to measure jaw joint translation and rotation, virtual markers used to measure distances between teeth, and the muscle lines of action used to calculate moment arms (MMAs). Example of time-varying jaw joint rotations and translations, along with occlusal distance between teeth and with MMA for 4 muscles in specimen rat 64, trial 1 (see supplemental video).