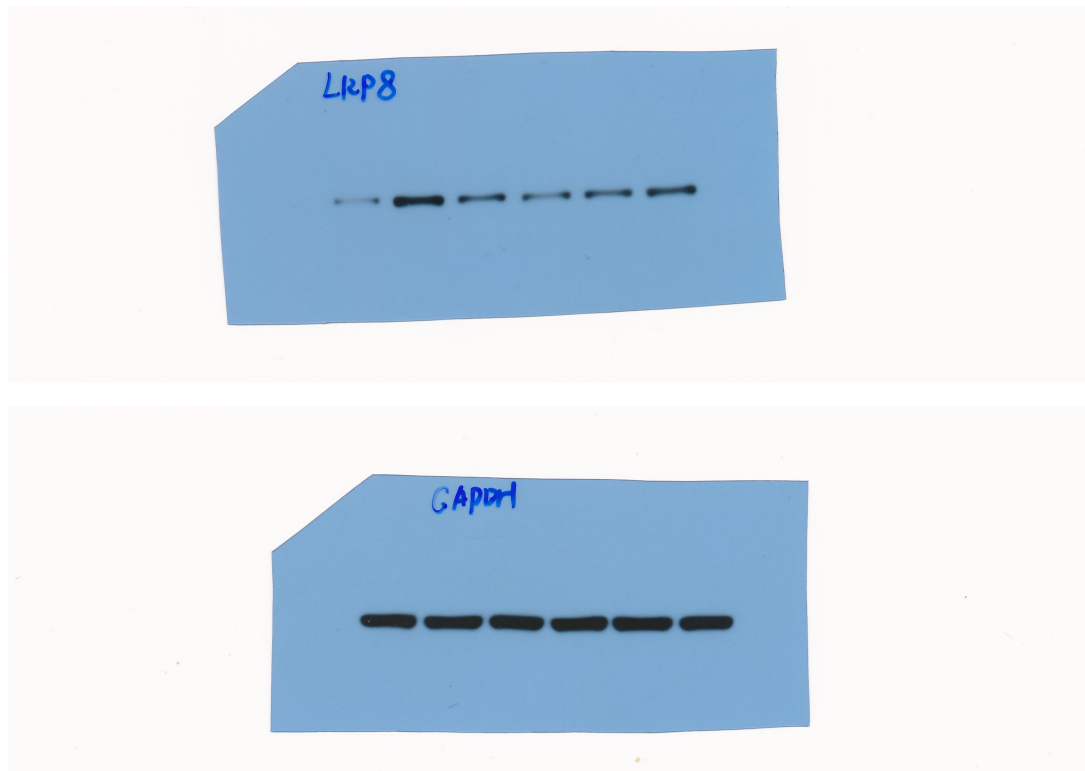
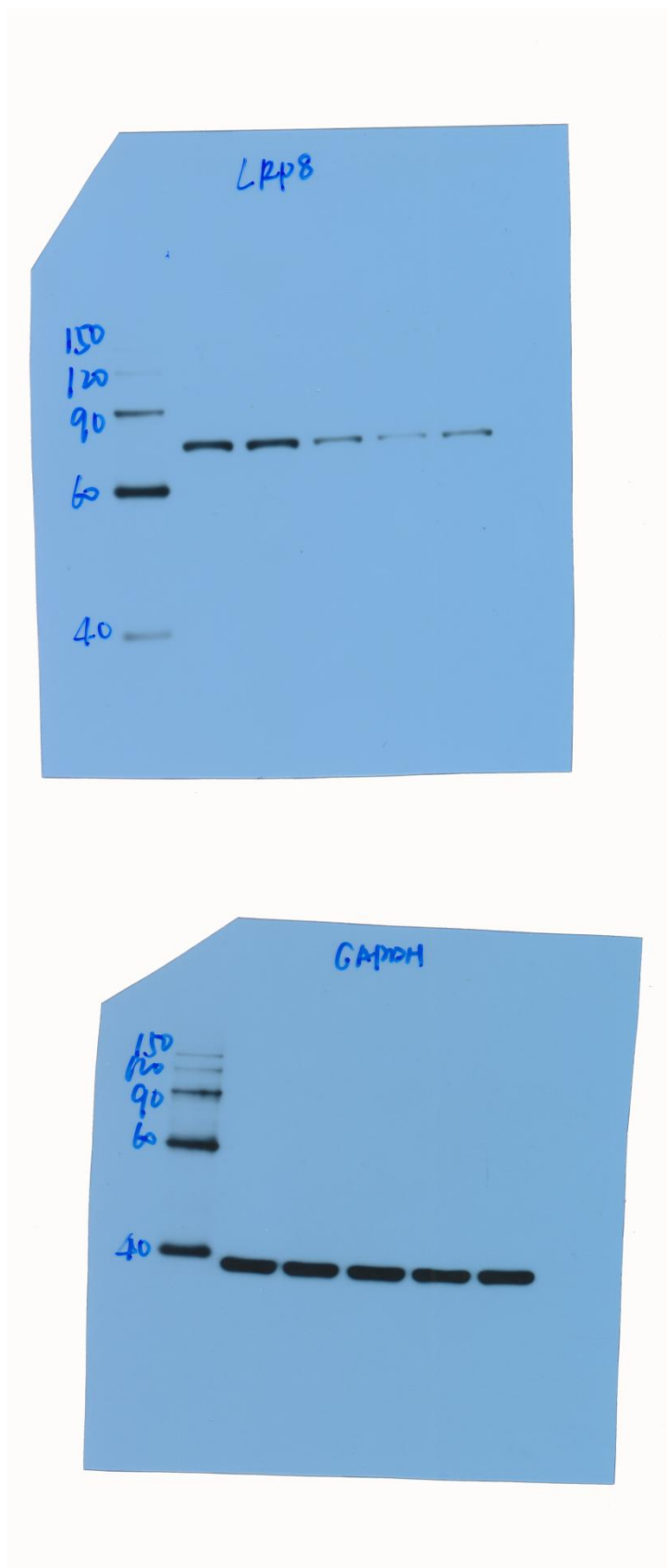


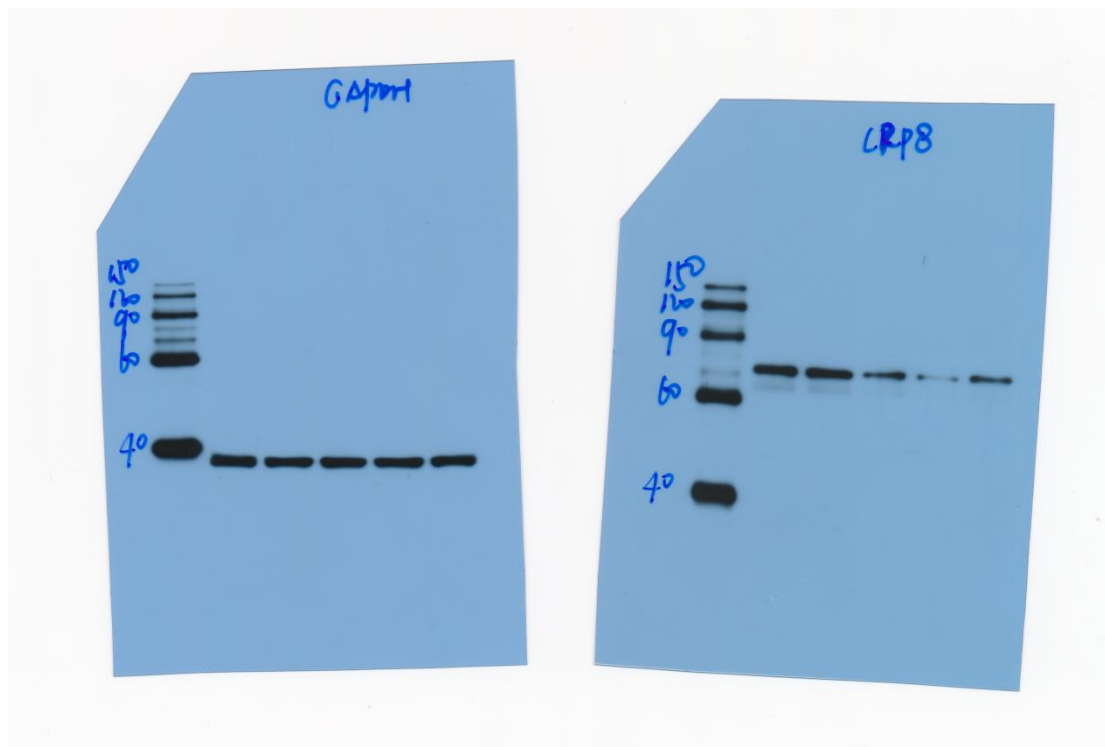
The grouping of gels/blots cropped from different parts of the same gel, or from different gels, fields, or exposures must be made explicit and described in the figure legend. Where cropped gels/blots are displayed, full-length gels and blots are included in uncropped gel images-supplementary file.



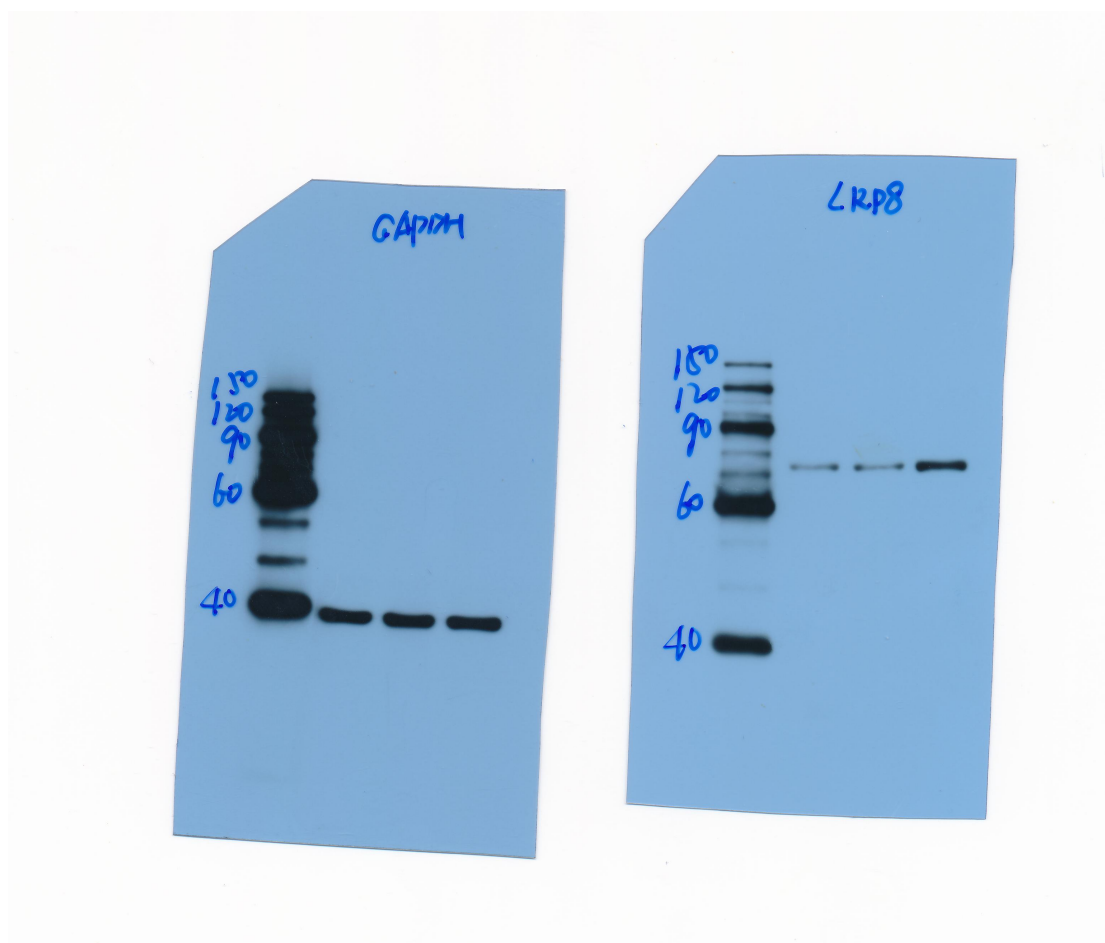
**Figure 3.** (A) LRP8 expression levels were analyzed by qRT-PCR and western blot in NCM460 and CRC cell lines (SW480, SW620, HT-29, HCT116, LOVO).



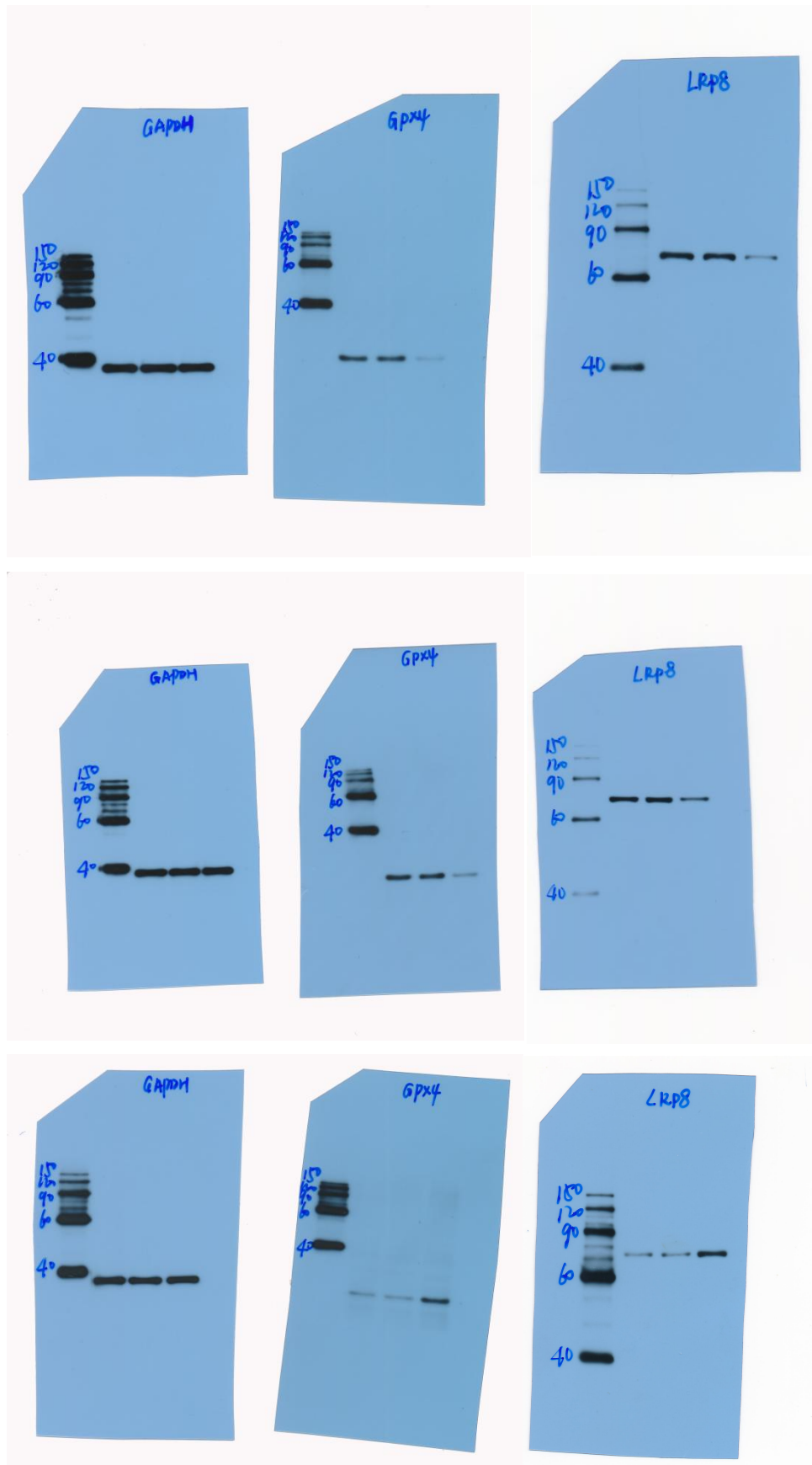
**Figure 3. (B)** Validation of LRP8 knockdown in SW480 cells by western blot.



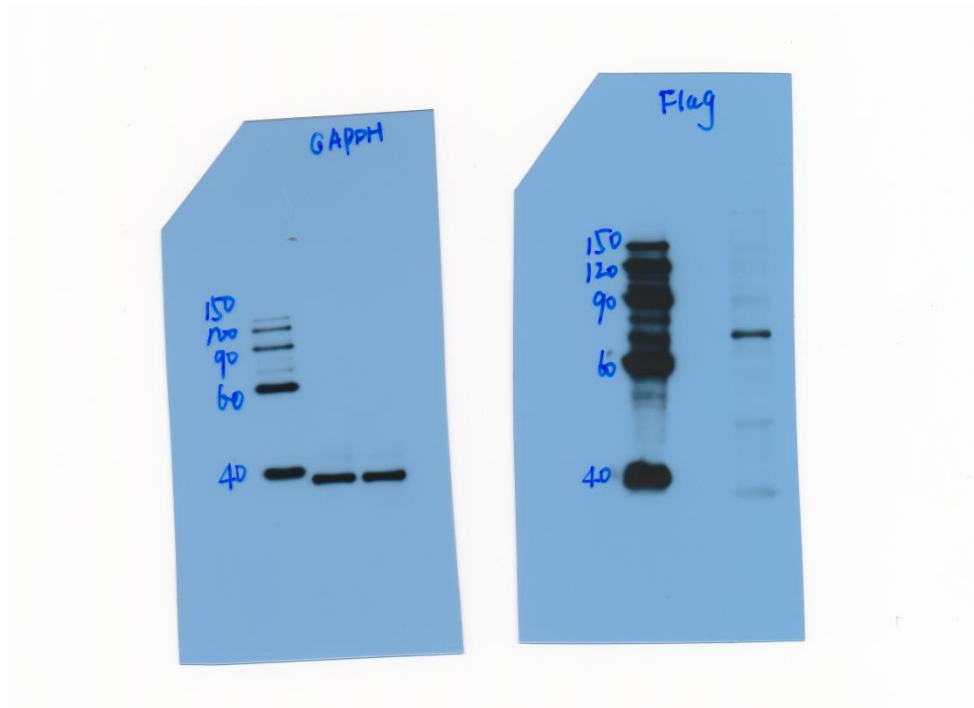
**Figure 3. (C)** Validation of LRP8 knockdown in SW620 cells by western blot.



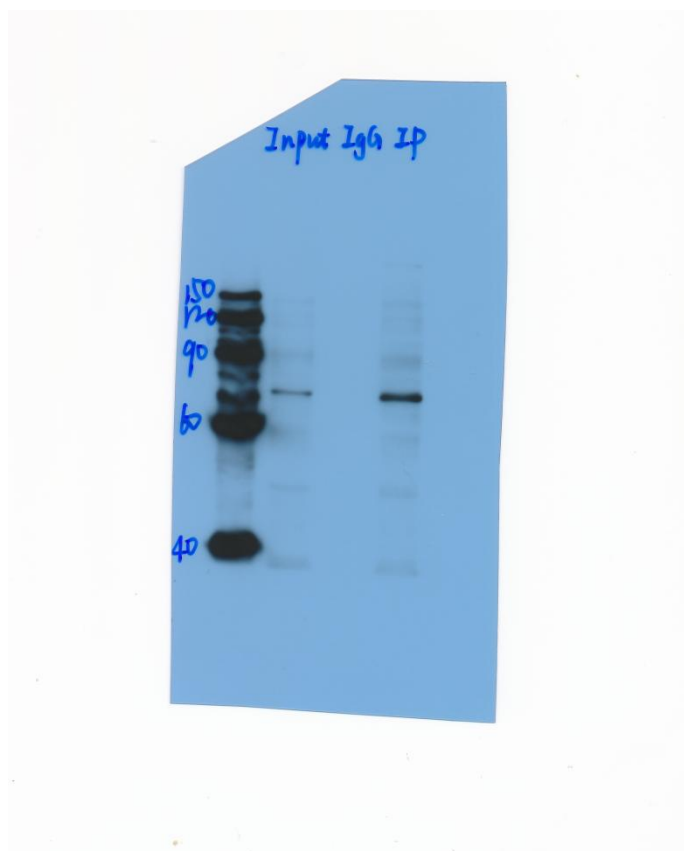
**Figure 3. (D)** Confirmation of successful LRP8 overexpression in HCT116 cells following lentiviral transduction.



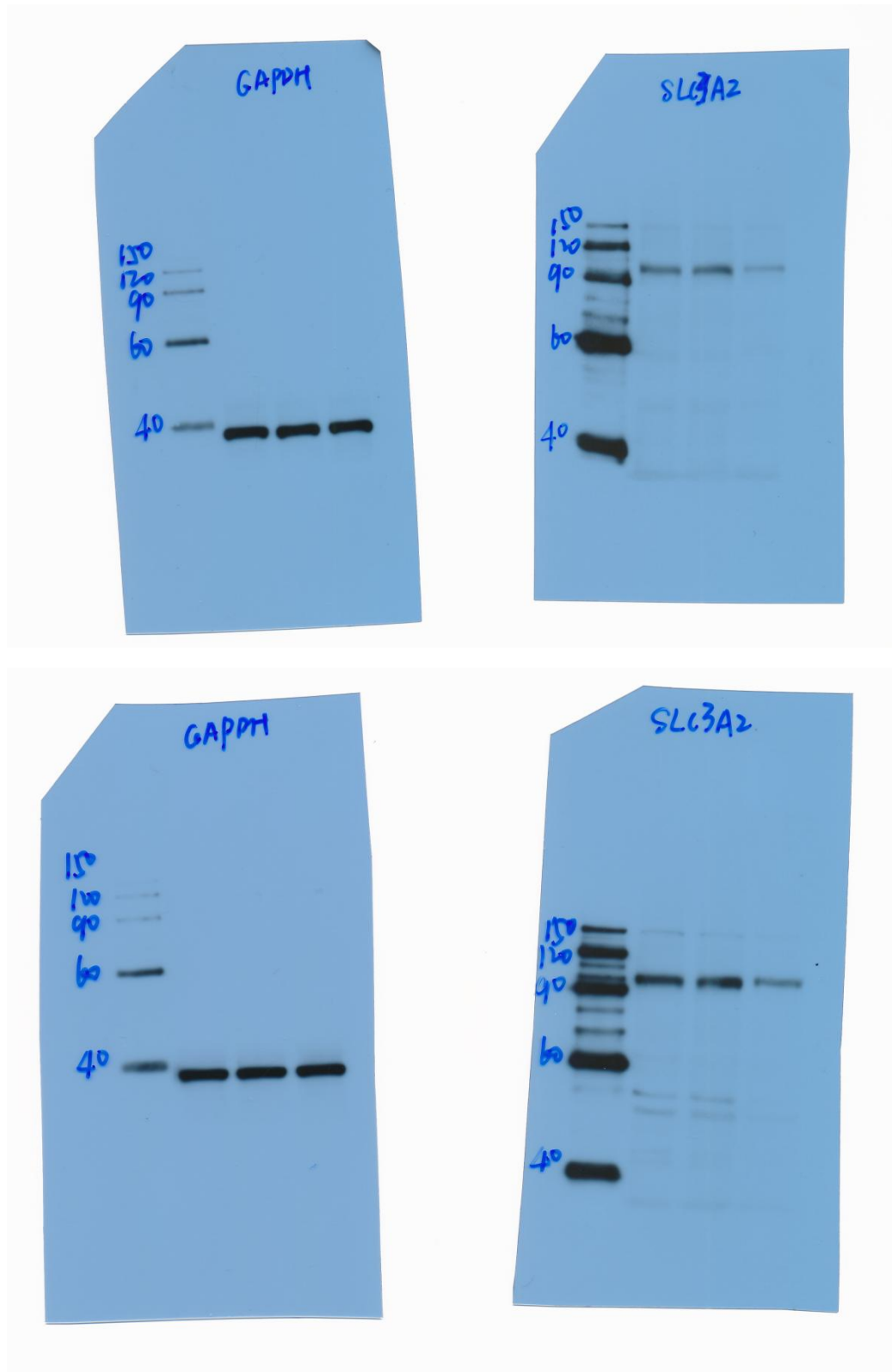
**Figure 5. (B)**Western blot assessing GPX4 expression following LRP8 knockdown in three CRC cell lines.



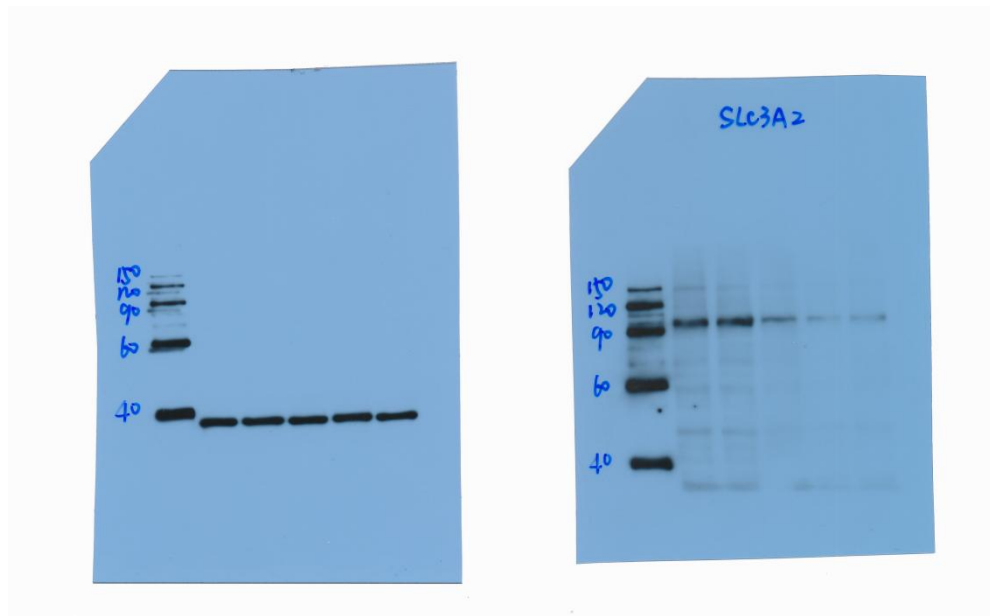
**Figure 6. (A)** Western blot confirming the expression of Flag-tagged LRP8 in HCT116 cells.



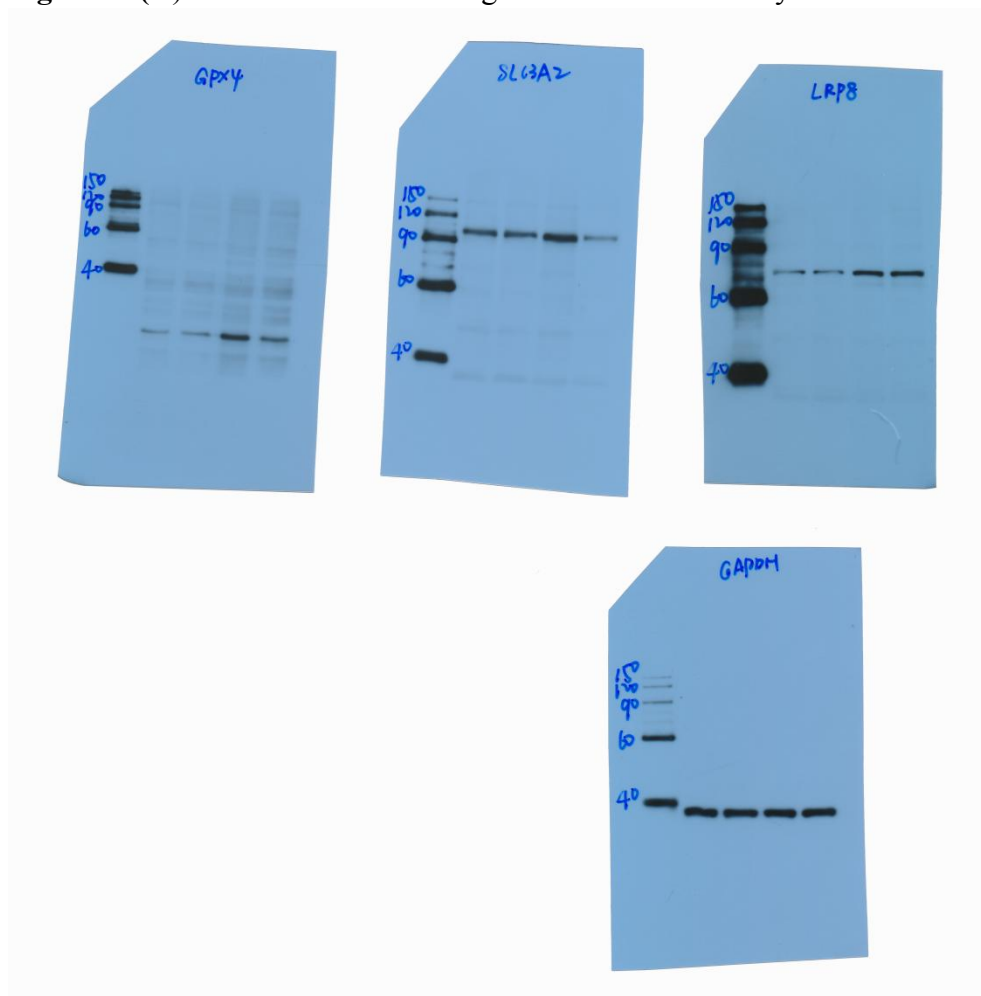
**Figure 6. (B)** Co-immunoprecipitation (Co-IP) assay demonstrating the physical interaction between LRP8 and SLC3A2.



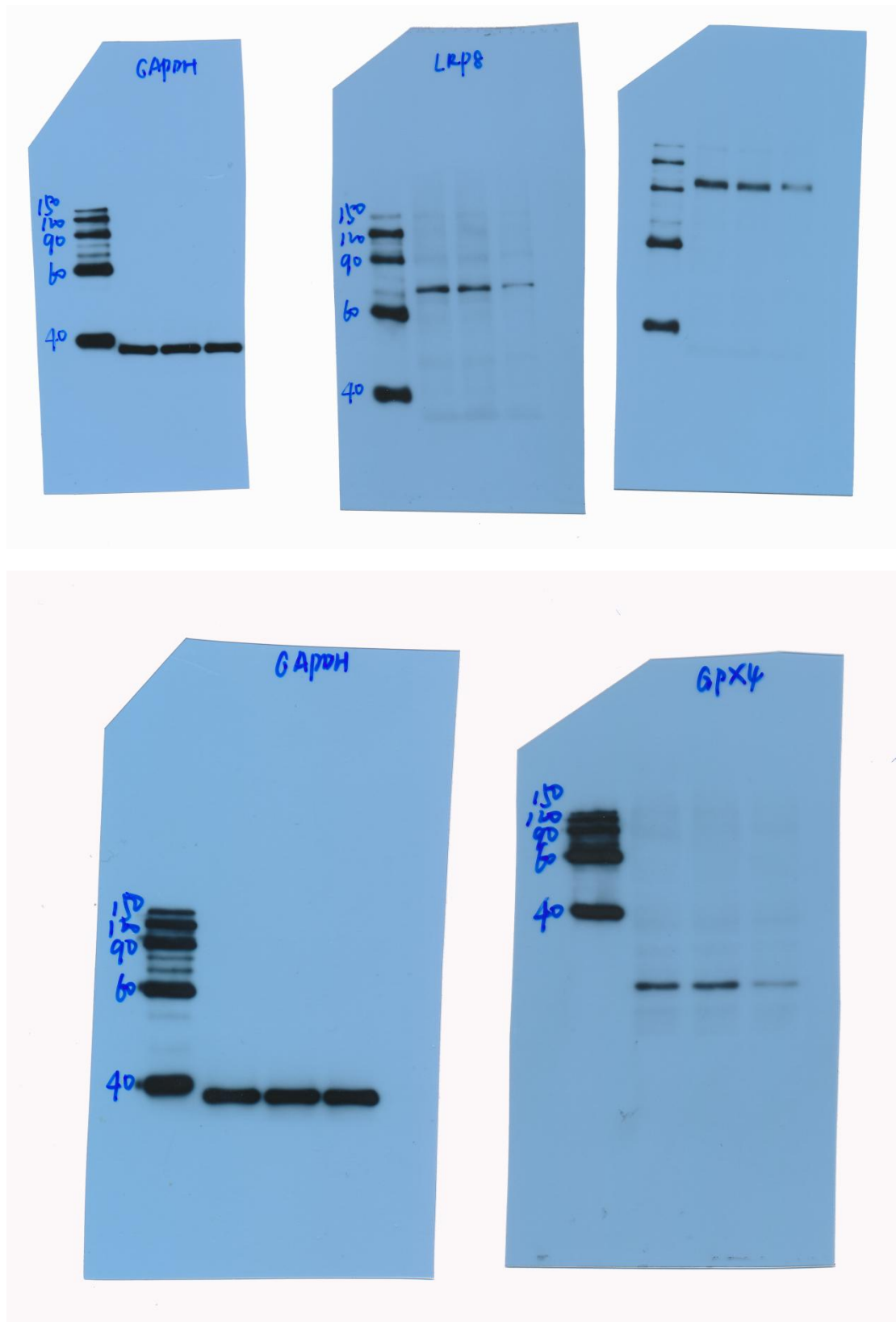
**Figure 6. (G)**Western blot assessing SLC3A2 expression following LRP8 knockdown in SW480 and SW620 cells.



**Figure 7. (A)**Western blot confirming knockdown efficiency of SLC3A2.



**Figure 7. (B)**Western blot showing GPX4 protein expression following co-transfection.



**Figure 8.** (F) Western blot analysis of LRP8, GPX4, and SLC3A2 protein levels in excised tumours.