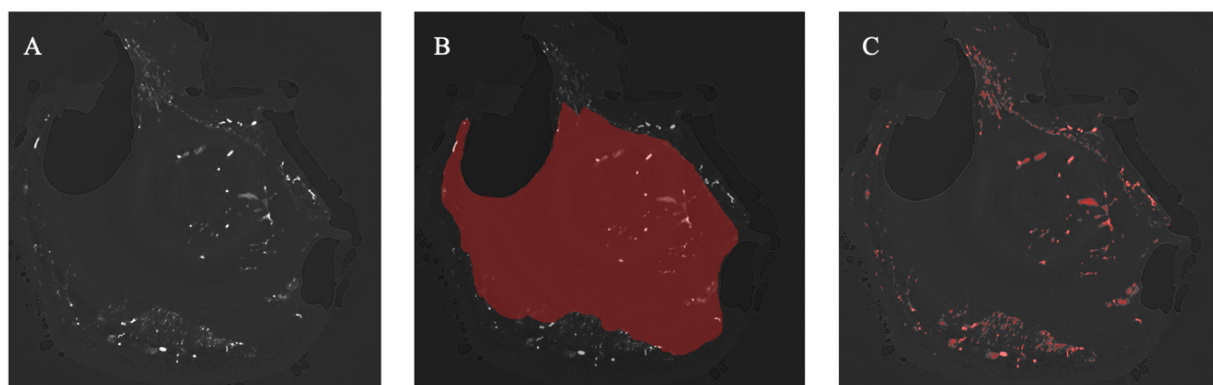
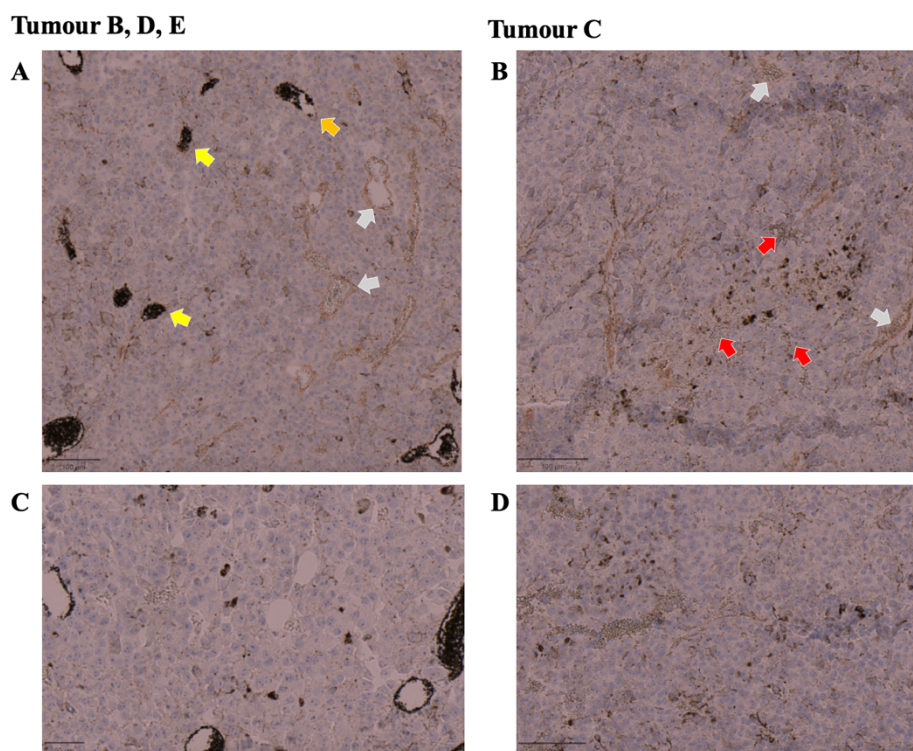


Contrast-Free Quantification of Tumour Angiogenesis and Perfusion using SURE (Super-Resolution Ultrasound Using Erythrocytes).

Supplementary Materials



Supplementary Figure 1: Tumour vascular density measurement from μ CT scans. All image planes display the same μ CT image frame. Figure 2a: μ CT scan without an overlay. Figure 2b: An overlay in red of the manually created 3-dimensional tumour ROI mask. Figure 2c: An overlay in red of the isolated vascular contrast agent using imaging intensity thresholding. All images are generated using ITK-SNAP software.



Supplementary Figure 2: Variable contrast-agent vascular of tumours. Figure 2a: a representative section of chromogenic CD-31-stained tissue section from tumours B, D and E, where some vessels were fully filled (yellow arrow), partially filled (orange arrow) or unfilled (grey arrow). Figure 2b: A representative region of Tumour C showing unfilled vessels (grey arrow) and extravasated erythrocytes (red arrow). Bottom row: matching negatively stained slides. Tumour A was not analysed using chromogenic immunohistochemistry.