

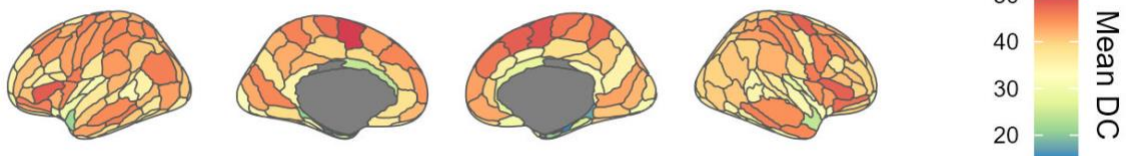
## **Supplementary Material**

### **Superagers resist an age-related anteroposterior shift in intrinsic connectivity**

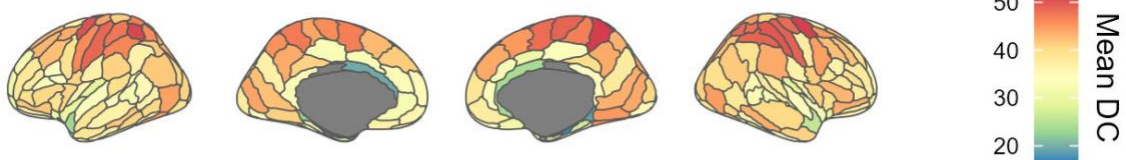
Qumars Behfar, Marta Garo-Pascual, Linda Zhang, Hannes Gramespacher, Miguel Medina, Gereon R. Fink, Teodoro del Ser, Oezguer A. Onur, Bryan A. Strange

**Supplementary Figure 1: Cross-sectional region-specific connectivity measures contributing to antero-posterior gradient differences between superagers and typical older adults.** Mean degree centrality (DC) for each Brainnetome parcellation for both superagers and typical older adults is displayed for left and right hemispheres, along with the mean difference between the two groups.

### Superagers



### Typical Older Adults



### Superagers vs. Typical Older Adults

