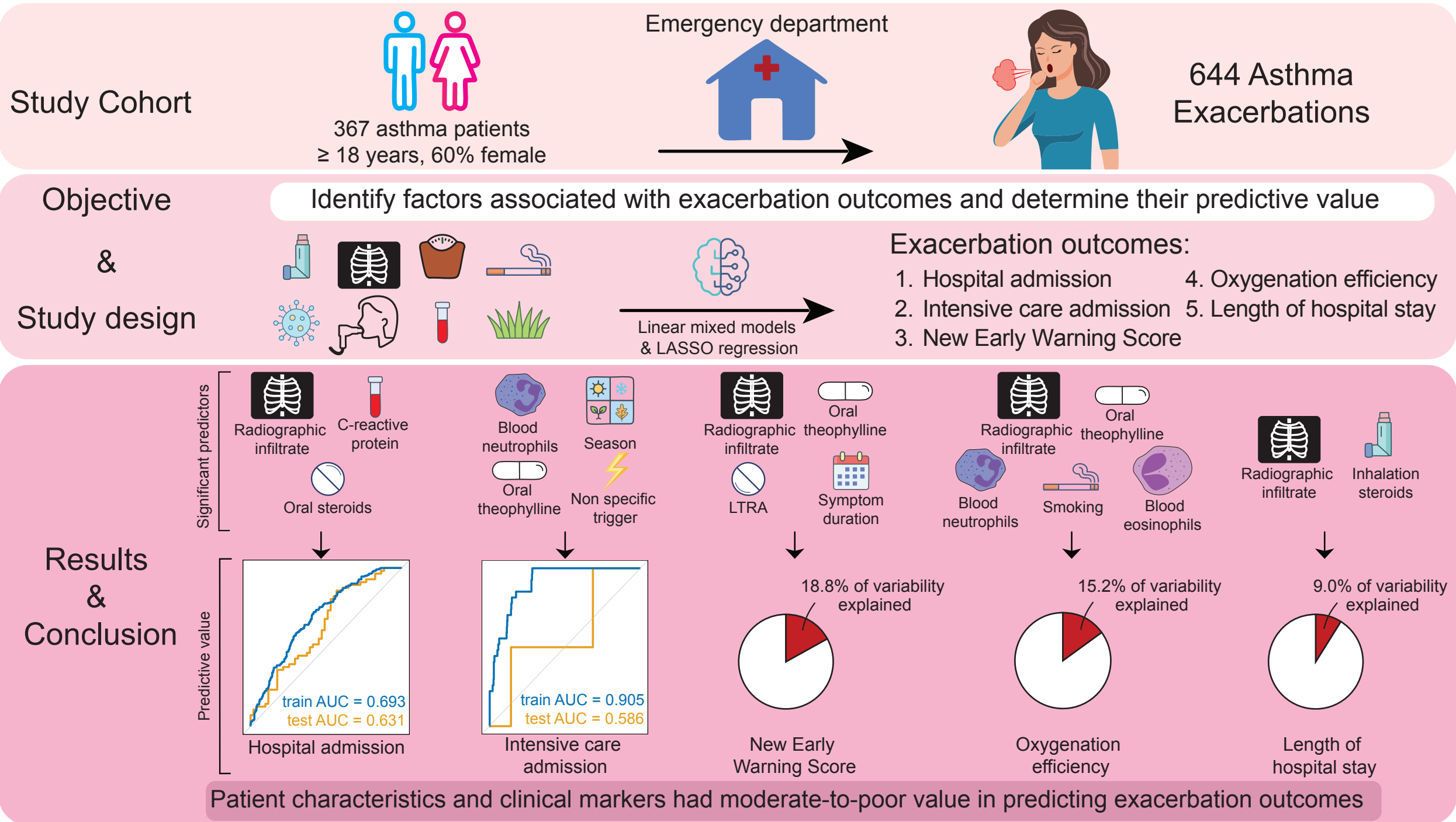


# Risk factors for asthma exacerbation severity and clinical outcomes: a retrospective cohort analysis





Radiographic infiltrate



Inhalation steroids



9.0% of variability explained

Length of hospital stay

Patient characteristics and clinical markers had moderate-to-poor value in predicting exacerbation outcomes

AUC = Area under the curve; LASSO = Least absolute shrinkage and selection operator; LTRA = Leukotriene receptor antagonist