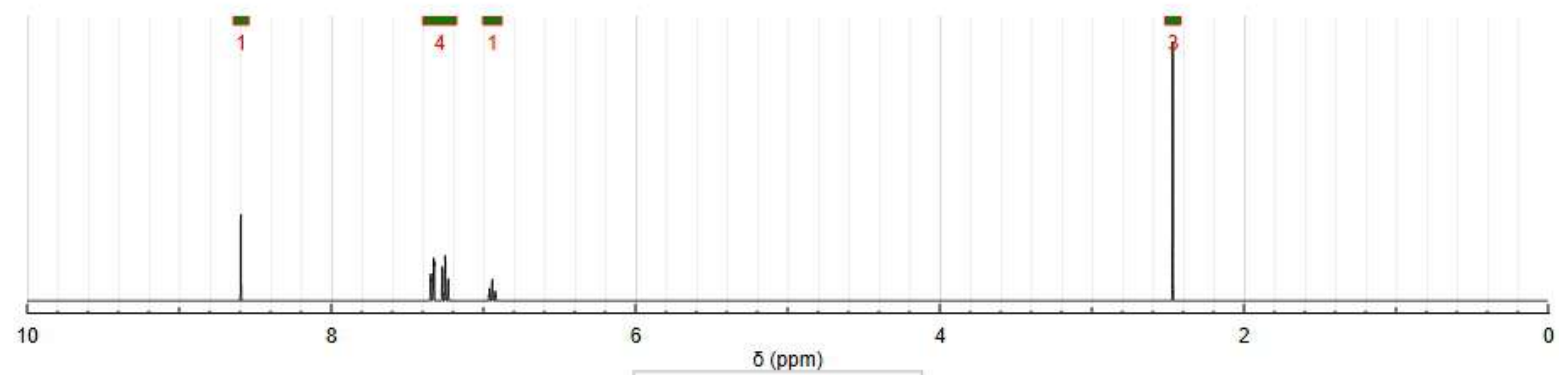



<sup>1</sup>H NMR spectra - Double click to zoom out, SHIFT + double click to zoom out by step, SHIFT + drag to move spectrum



## List of signals

Assignment	Delta	Nb ato...	Mult	J (Hz)	
14,15,16	2.467	3			
20	6.94	1	tt	7.78 1.20	
19,21	7.25	2	dddd	8.19 7.78 1.40 0.52	
18,22	7.333	2	dddd	8.19 1.34 1.20 0.52	
23	8.593	1			

$^1\text{H NMR}$ :  $\delta$  2.47 (3H, s), 6.94 (1H, tt,  $J = 7.8, 1.2$  Hz), 7.18-7.40 (4H, 7.25 (dddd,  $J = 8.2, 7.8, 1.4, 0.5$  Hz), 7.33 (dddd,  $J = 8.2, 1.3, 1.2, 0.5$  Hz)), 8.59 (1H, s).