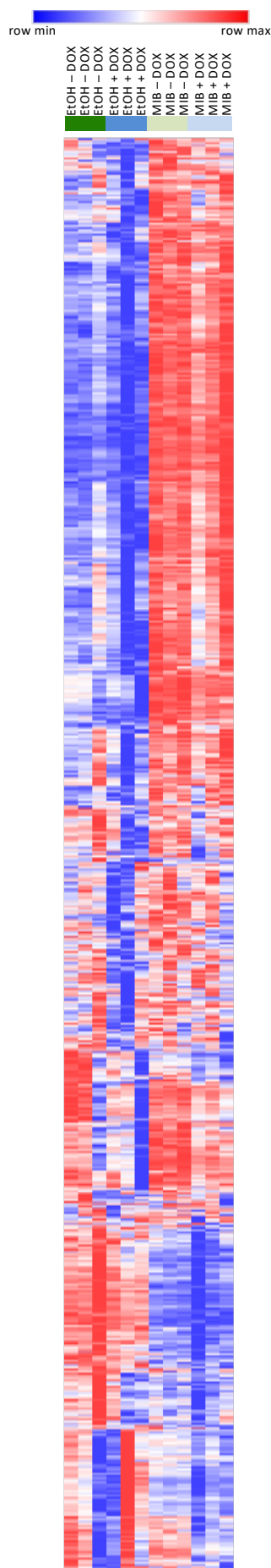


Brooke *et al.* Supplemental Figure 1



Supplemental Figure 1. The effect of doxycycline upon gene expression in the parental LNCaP-TR2 line. The parental LNCaP-TR2 cell line was treated ± mibolerone (MIB) ± doxycycline (DOX) for 24hrs and enhanced FUS expression confirmed using immunoblotting. Microarray analysis was performed to identify genes differentially expressed in response to MIB and/or DOX. Heat map visualization of the genes found to be differentially regulated in response to MIB and/or DOX. Each vertical line represents one sample.