

**Table S1 | Cultural heritage list of three cultures**

<b>Culture type</b>	<b>Cultural heritage</b>
Agrarian culture	Hemudu, Jingtoushan, Tashan, Tongjiaao, Mingshanhou, Shiao, Baziqiao, Dongjiatiao, Lujiqiao, Henggang, Sixia, Dongcheng, Aojiashan, Xiazhuang, Maohu, Wuxing, Cihu, Xiaodongmeng, Shaxi, Xiawangdu, Zishan, Fujiashan, Tianluoshan, Yushan • Wuguishan Sites.
Maritime fishing culture	Dongmen Mazu Temple, Daxie Site, Xiepu Wenwu Temple, Sanshan Guild Hall, Jingtoushan Site, Yushan • Wuguishan Site, Qing'an Guild Hall, Qiliyu Lighthouse, Coastal Lighthouses of Eastern Zhejiang, Xiangshan Fishermen's Work Songs, Stone Pedestal Carving, Xiepu Boat Drum, Decorative Boats, Xianxiang Mid-Autumn Fishermen's and Cotton Festival, Xiangshan Fish Rubbing Art, Ship Model Art, Andong Salt Drying Techniques, Bone and Wood Inlay Art (Jiangbei), Shipu Fish Lanterns, Traditional Craft of Farming (Fishing) Boat Building, Decorative Boat Making Techniques, "Bingchanggen" Site.
Maritime trade culture	Houqibu Shipwreck, Yuehu Mosque, Guotong'ao Kiln Site, Qita Chan Temple, Shangshui'ao Kiln Site, Lishe Wharf, Ashoka Temple, Tiantong Temple, Doumen Bridge, Jixiang Chan Temple of Liusan Village, Baiyun Temple, Zhaobao Mountain Shipyard, Wanhu Sacred Ship, Tianfeng Pagoda, Hangji Pavilion, Site of Goryeo Embassy, Silongkou Kiln Site, Kaidaoshan Kiln Site, Housi'ao Celadon Kiln Site of Shanglin Lake, Traditional Craftsmanship of Yue Kiln Celadon, Yongfeng Granary Site, Yanqing Temple, Qing'an Guild Hall, Anlan Guild Hall.

**Table S2 | Resistance factors for three cultures and weights**

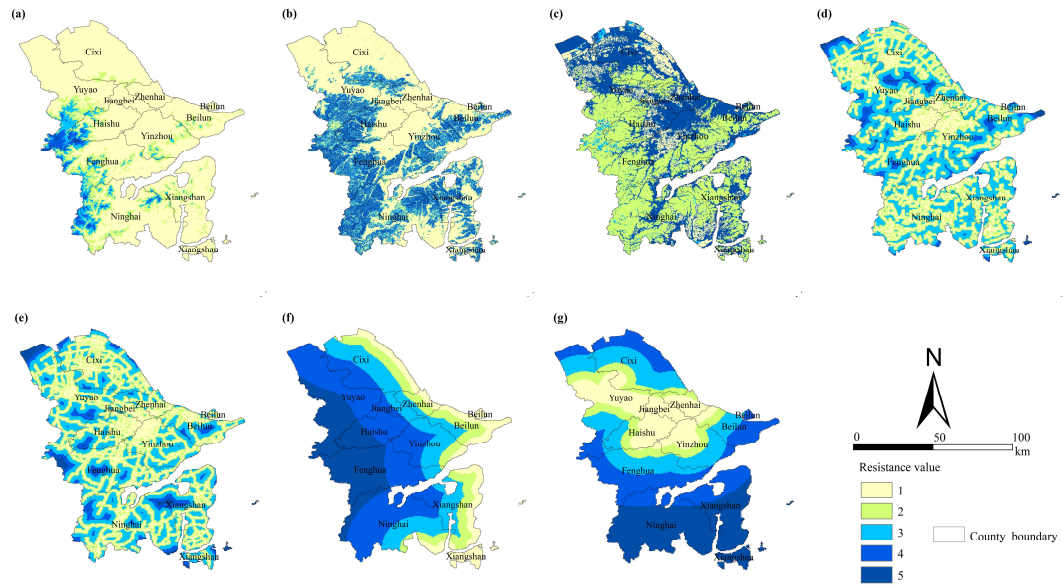
<b>Culture type</b>	<b>Resistance factor</b>	<b>Weight</b>
Agrarian culture	①Elevation	0.042
	②Slope	0.139
	③Distance from the river	0.34
	④Distance from the road	0.34
	⑤Land use type	0.139
Maritime fishing culture	①Elevation	0.113
	②Slope	0.051
	③Distance from the coastline	0.547
	④Distance from the river	0.240
	⑤Distance from the road	0.049
Maritime trade culture	①Elevation	0.059
	②Slope	0.159
	③Distance from the road	0.254
	④Distance from the coastline	0.104
	⑤Distance from the routes of the Ningbo Section of the Grand Canal of China	0.424

**Table S3 | Resistance factors and resistance grading**

Resistance factor	Resistance value				
	1	2	3	4	5
Elevation/m	0-200	200-400	400-600	600-800	>800
Slope/°	0-5	5-10	10-15	15-20	>20
Land use type	Cultivated land	Forest land	Pasture	Bare land	Construction land
Distance from the river/km	0-0.5	0.5-1	1-3	3-5	>5
Distance from the road/km	0-0.5	0.5-1	1-3	3-5	>5
Distance from the coastline/km	0-5	5-10	10-20	20-40	>40
Distance from the routes of the Ningbo Section of the Grand Canal of China/km	0-5	5-10	10-20	20-40	>40

**Table S4 | Spatial characteristics of multicultural heritage corridors**

Corridor	Cultural origin	Corridor centrality	CWD /LCP_length	Tourism theme
1	1,3	First-level	1.38-1.77	Agrarian- maritime trade-maritime fishing culture
1	7,8	First-level	1.38-1.77	Agrarian- maritime trade-maritime fishing culture
3	6,7	First-level	1.38-1.77	Maritime trade-agrarian culture
4	5,8	First-level	1.38-1.77	Maritime trade-maritime fishing culture
5	2,4	Second-level	1.38-1.77	Agrarian culture
6	7,10	Second-level	1.77-2.35	Agrarian-maritime trade-maritime fishing culture
7	8,9	Second-level	1.77-2.35	Maritime fishing trade
8	7,9	Second-level	1.77-2.35	Agrarian-maritime trade-maritime fishing culture
9	3,5	Third-level	1.36-1.38	Maritime fishing-maritime trade culture
10	4,7	Third-level	1.38-1.77	Agrarian-maritime trade culture
11	6,8	Third-level	1.77-2.35	Maritime trade-maritime fishing culture
12	9,10	Third-level	1.38-1.77	Maritime fishing culture



**Fig. S1 | Resistance factors and resistance grading.** **a** Elevation, **b** Solpe, **c** Land use type, **d** Distance from the river, **e** Distance from the road, **f** Distance from the coastline, **g** Distance from the routes of the Ningbo Section of the Grand Canal of China.