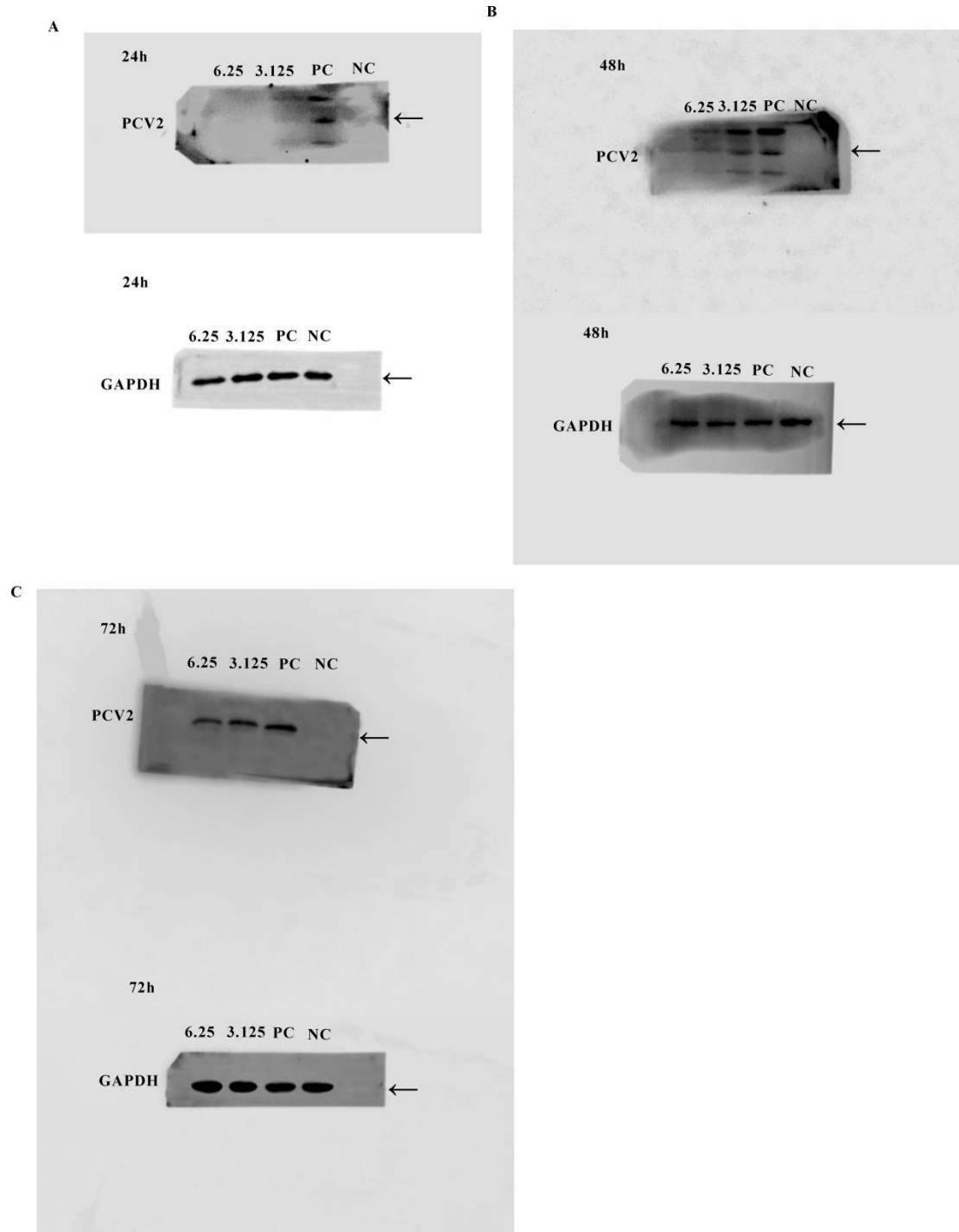


**Fig. 1.** Isolation, growth curve and 16S rDNA sequence analysis of *L. salivarius* ( $\times 1000$ ). **(D)** 16S rDNA amplification by PCR. M: DNA molecular weight standard DL2000; 1: The isolates (pig-SJZ2023); 2: Negative control.



**Fig. 6.** Dynamics detection of inhibition effect of the biosurfactant on PCV2. PK-15 cells were infected with the co-incubation solution of 6.25 mg/mL and 3.125 mg/mL biosurfactant and 0.2 MOI PCV2, respectively. After infection for 24 h, 48 h and 72 h, the virus antigen was detected by Western blot (**A**, **B** and **C**). NC: Negative control, PC: Positive control, ←: target protein band(s).