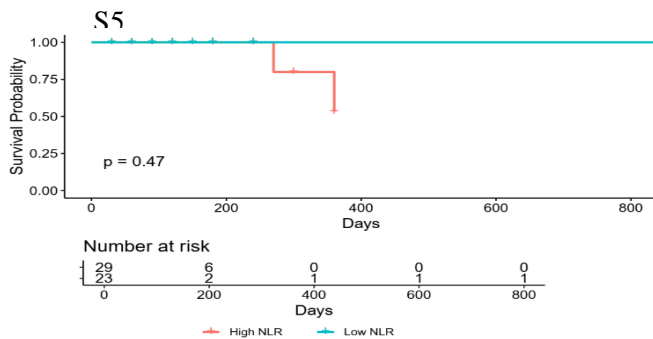
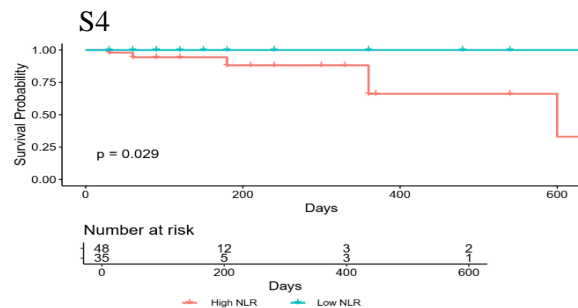
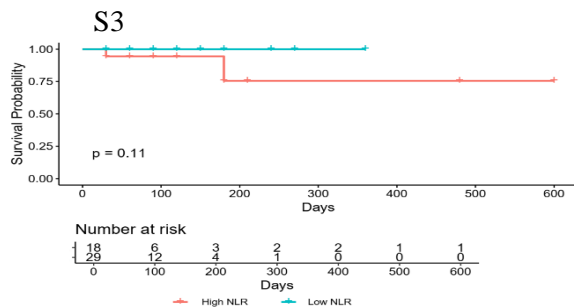
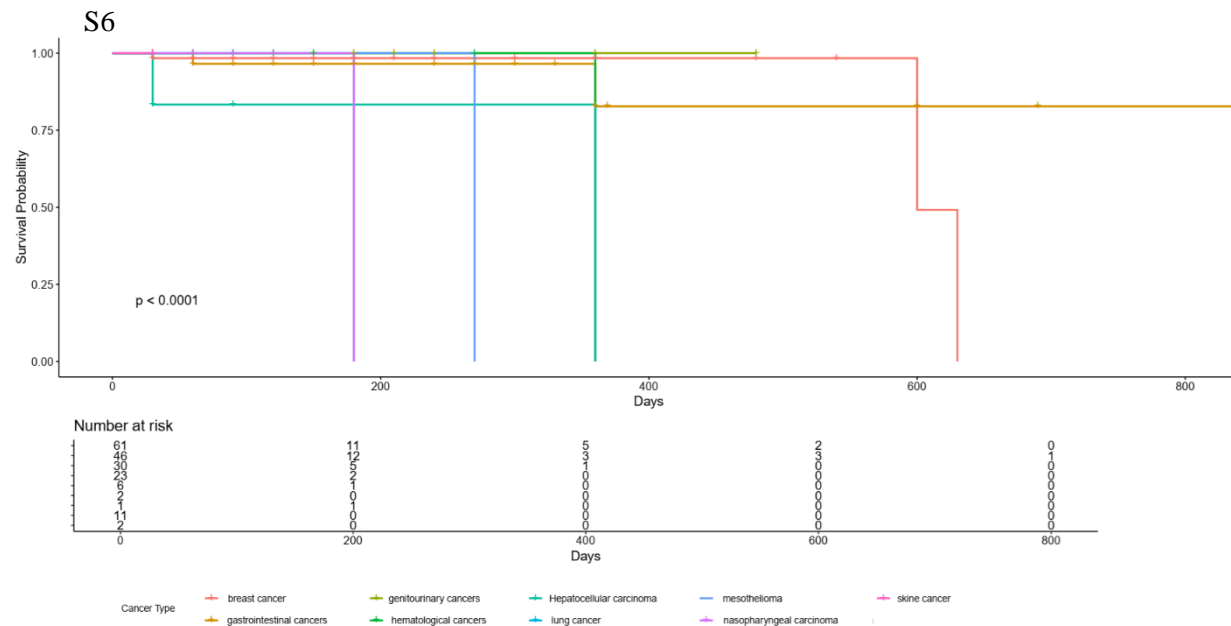


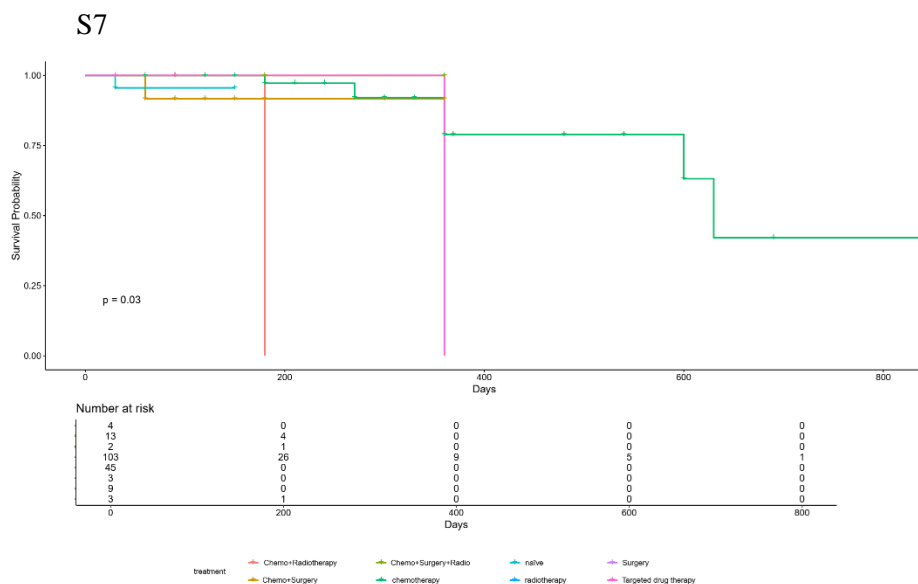
Supplementary Figures S1, S2. Kaplan-Meier Survival Analysis according to sex based on NLR values. S1: female, S2: male. Censoring, indicated by tick marks, is representing patients who were either lost to follow-up or remained alive at the last recorded time point. P indicates statistical significance.



Supplementary Figures 3-5. Kaplan-Meier Survival Analysis according to age groups based on NLR values. S3: age group 18-40 years, S4: age group 41-60, S5: age group >60 years. Censoring, indicated by tick marks, is representing patients who were either lost to follow-up or remained alive at the last recorded time point. P indicates statistical significance.



Supplementary Fig. S6. Kaplan-Meier Survival Analysis according to cancer types. Censoring, indicated by tick marks, is representing patients who were either lost to follow-up or remained alive at the last recorded time point. P indicates statistical significance.



Supplementary Fig. S7. Kaplan-Meier Survival Analysis according to treatment types. Censoring, indicated by tick marks, is representing patients who were either lost to follow-up or remained alive at the last recorded time point. P indicates statistical significance.