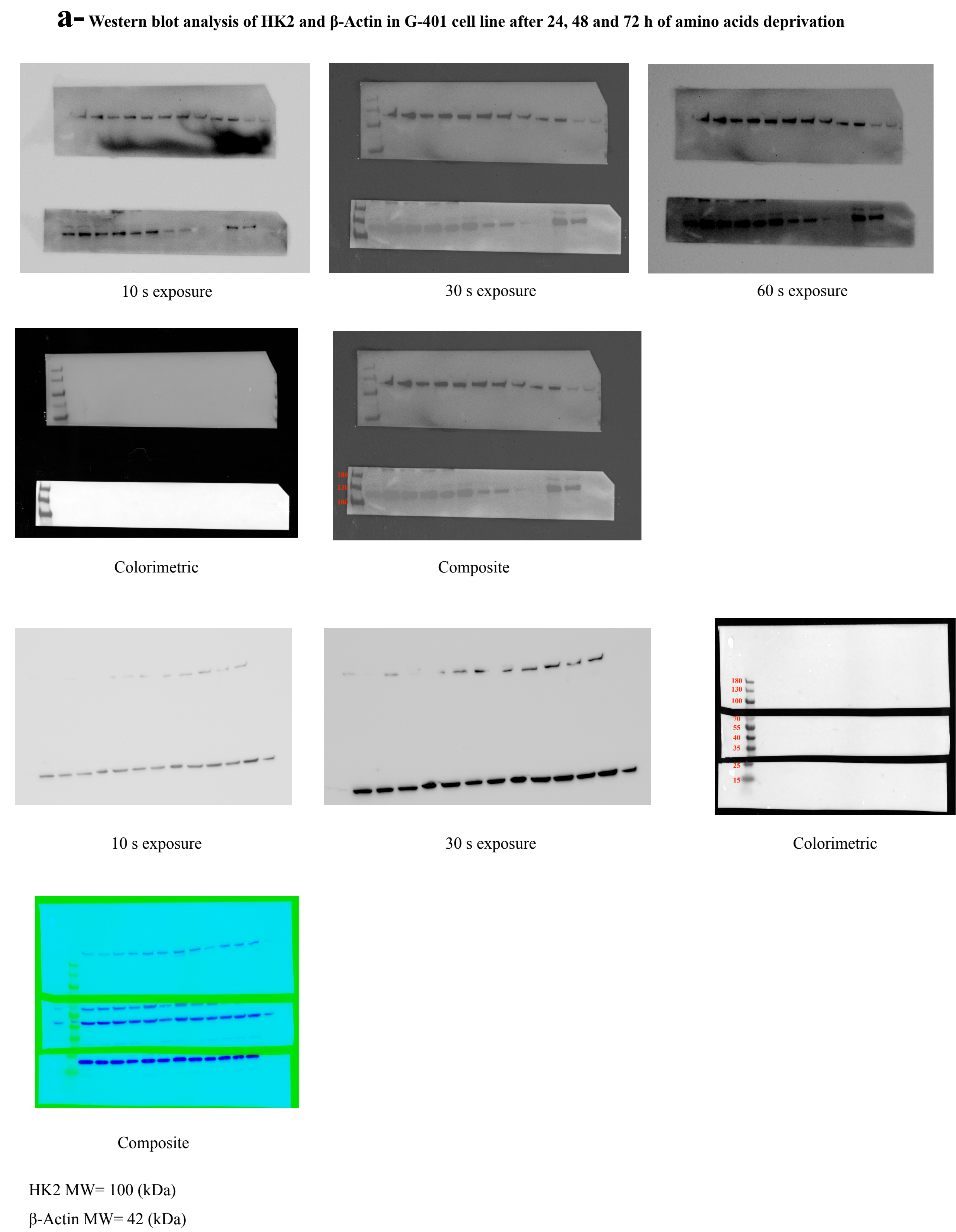


# Supplementary Figure 1

- 1. Marker
- 2. Ctrl 24h
- 3. -Tyr/Phe 24h
- 4. -Gln 24h
- 5. -Tyr/Phe/Gln 24h
- 6. Ctrl 48h
- 7. -Tyr/Phe 48h
- 8. -Gln 48h
- 9. -Tyr/Phe/Gln 48h
- 10. Ctrl 72h
- 11. -Tyr/Phe 72h
- 12. -Gln 72h
- 13. -Tyr/Phe/Gln 72h

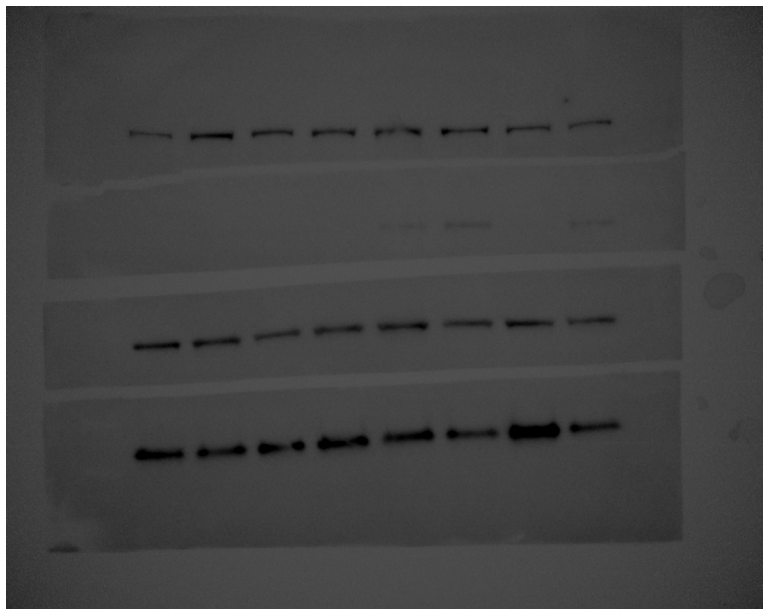
Samples were loaded into gels in this order.



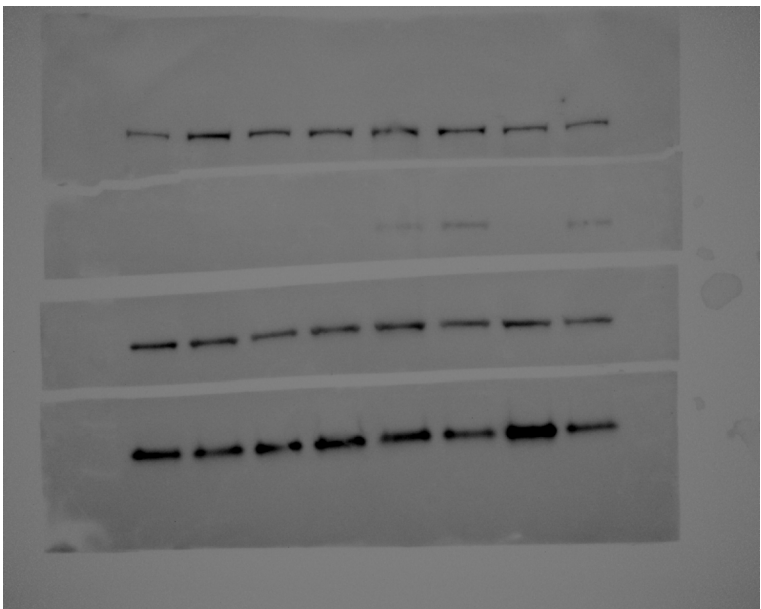
Samples were loaded into gels from **left to right**, with the protein ladder in the first lane.  
The down gel has been considered for the paper.



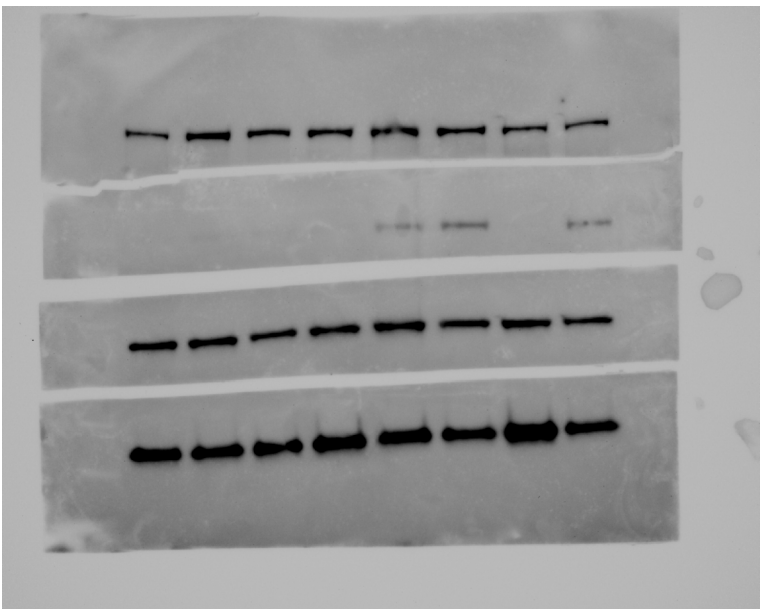
**b- Western blot analysis of mTOR, Cleaved-PARP and  $\beta$ -Actin in G-401 cell line after 24 and 72 h of amino acids deprivation**



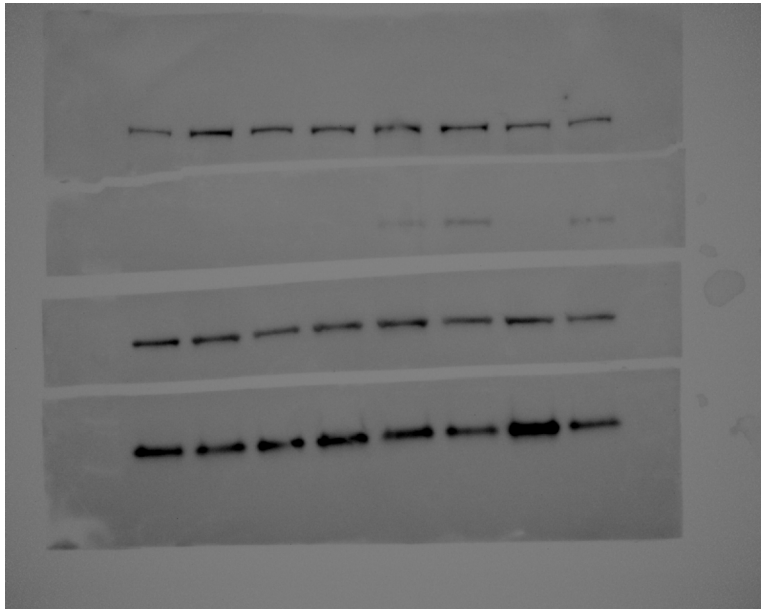
30 s exposure



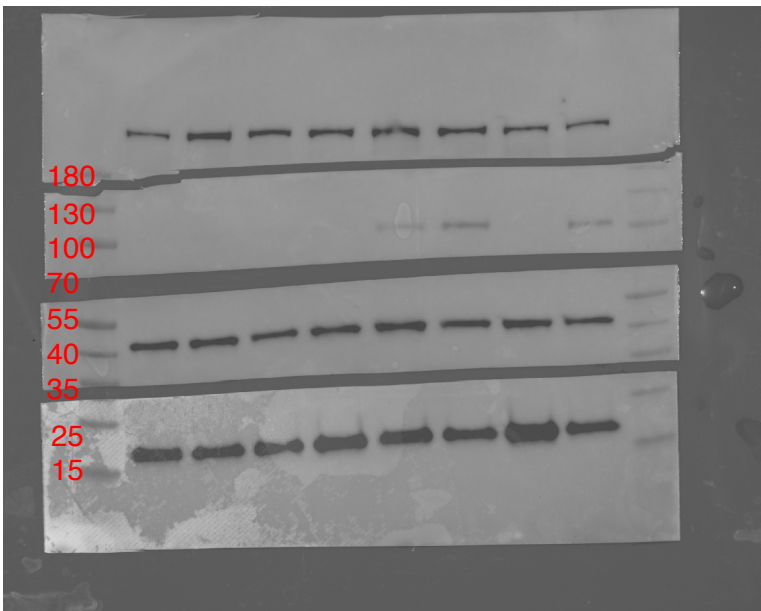
60 s exposure



300 s exposure



600 s exposure



Composite

mTOR MW= 289 (kDa)  
Cleaved PARP MW= 90 (kDa)  
 $\beta$ -Actin MW= 42 (kDa)

Samples were loaded into gels from **right** to **left**, with the protein ladder in the first lane.

**Western blot analysis of mTOR and  $\beta$ -Actin in G-401 cell line after 24 and 48 h of amino acids deprivation**



30 s exposure



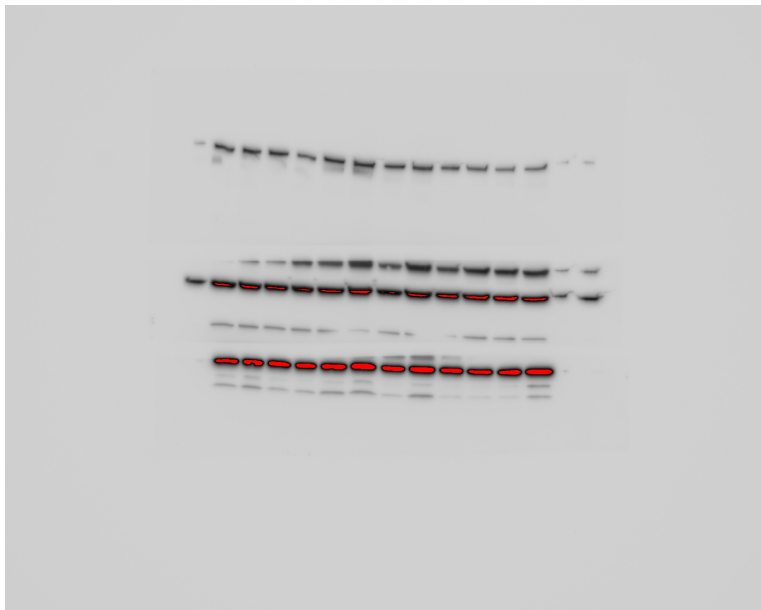
60 s exposure



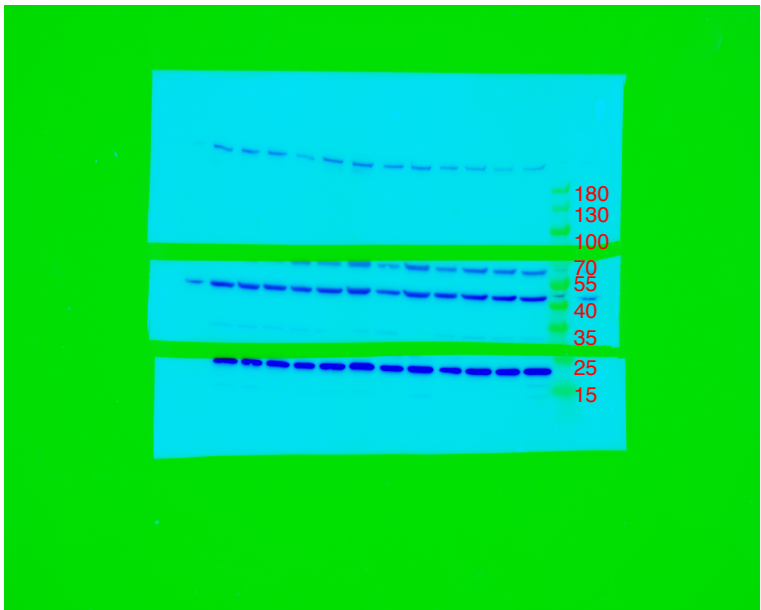
300 s exposure



600 s exposure



1200 s exposure



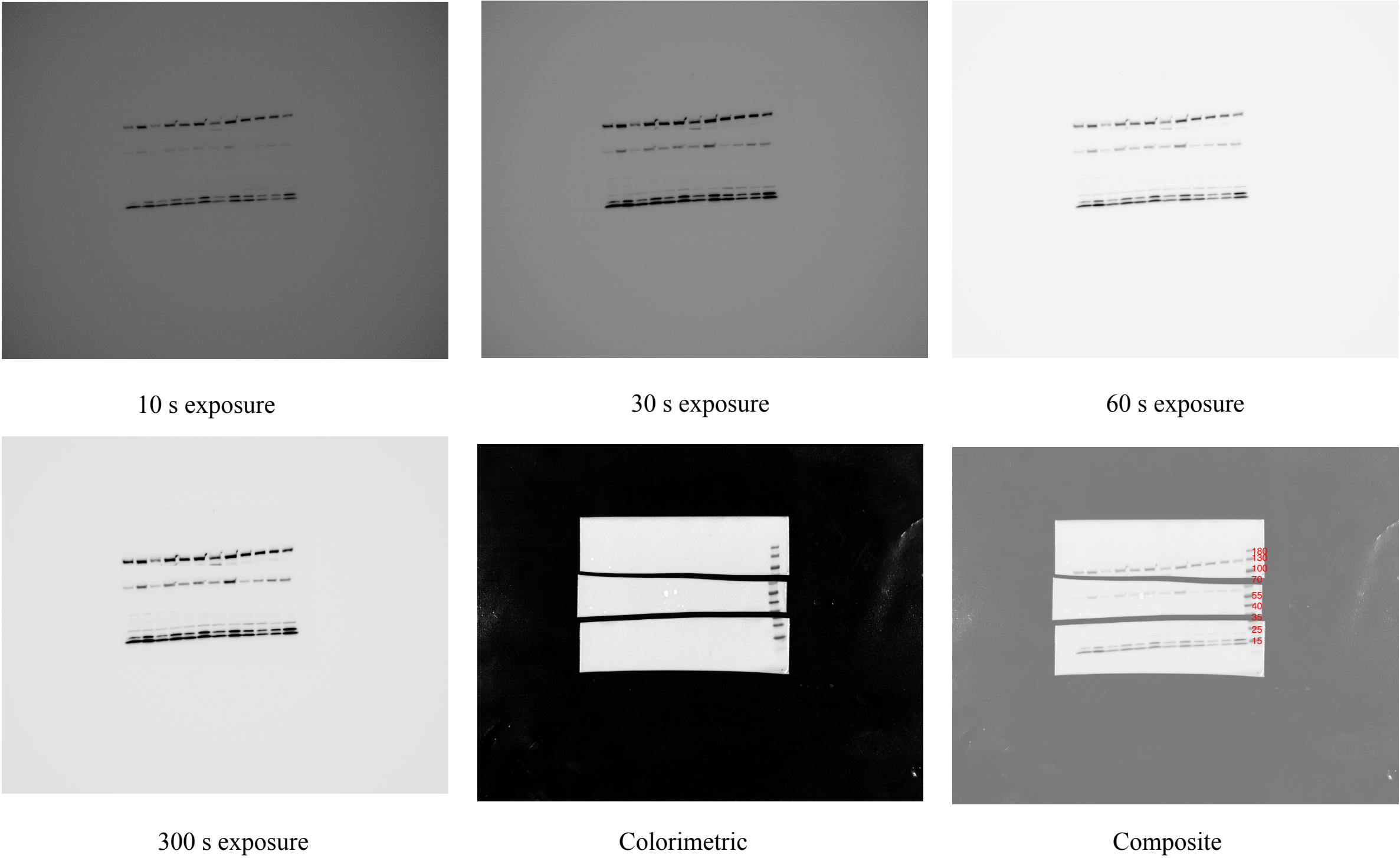
Composite

mTOR MW= 289 (kDa)  
 $\beta$ -Actin MW= 42 (kDa)

Samples were loaded into gels from **right** to **left**, with the protein ladder in the first lane.



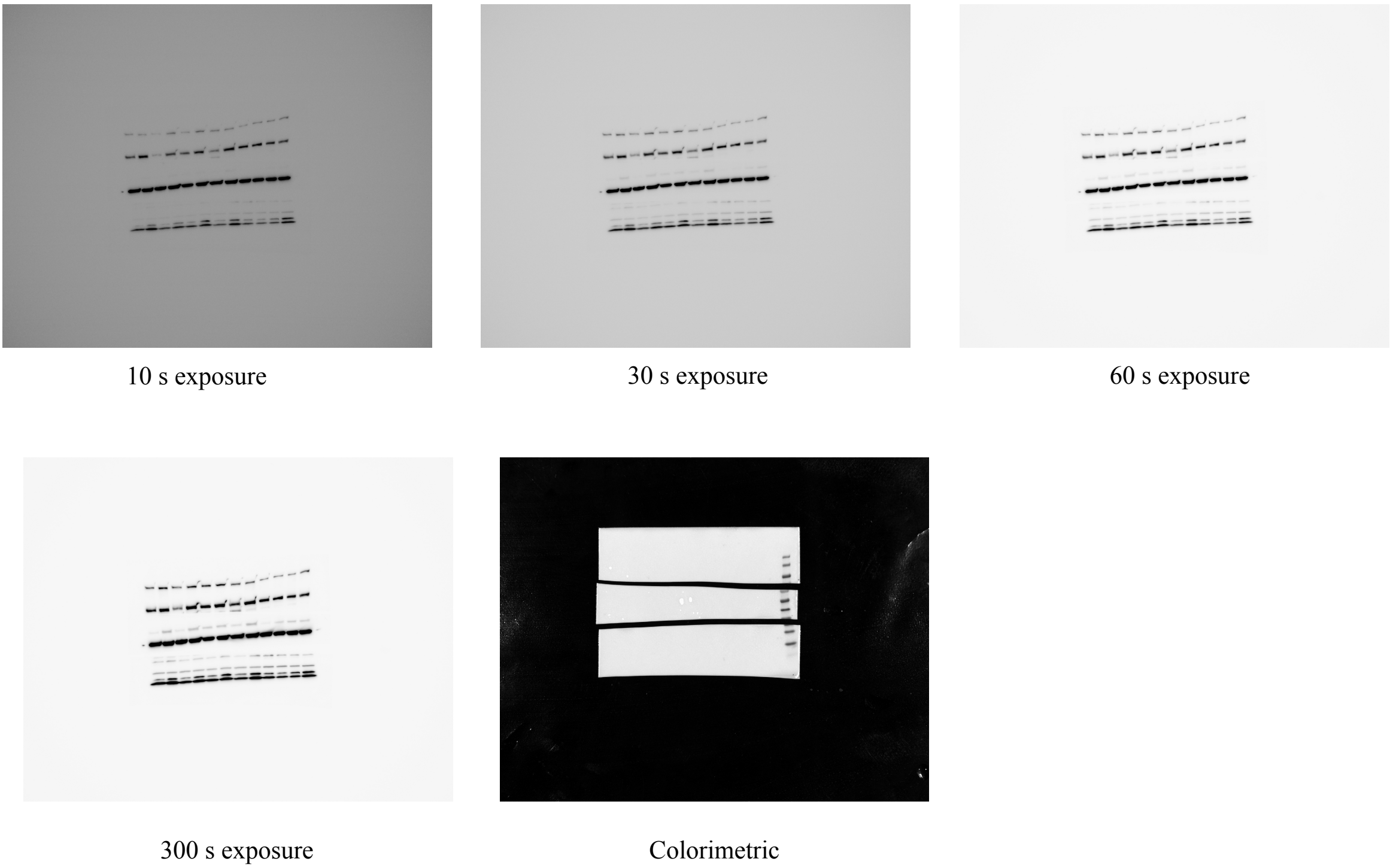
**C- Western blot analysis of LC3I-II B and β-Actin in G-401 cell line after 24, 48 and 72 h of amino acids deprivation**



LC3I-II B MW= 14, 16 (kDa)  
β-Actin MW= 42 (kDa)

Samples were loaded into gels from **left to right**, with the protein ladder in the first lane.

**Western blot analysis of LC3I-II B and β-Actin in G-401 cell line after 24, 48 and 72 h of amino acids deprivation**



LC3I-II B MW= 14, 16 (kDa)  
β-Actin MW= 42 (kDa)

Samples were loaded into gels from **right to left**, with the protein ladder in the first lane.



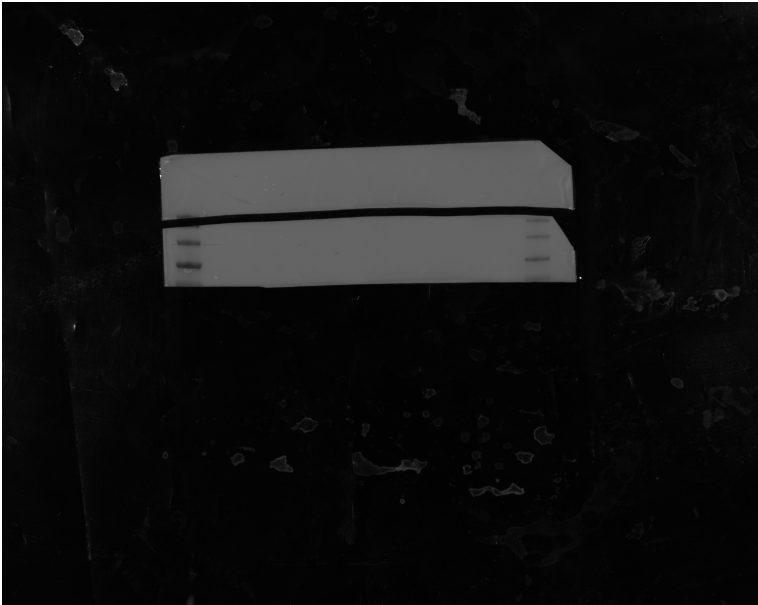
**d-** Western blot analysis of Cleaved PARP and  $\beta$ -Actin in G-401 cell line after 24 and 48 h of amino acids deprivation



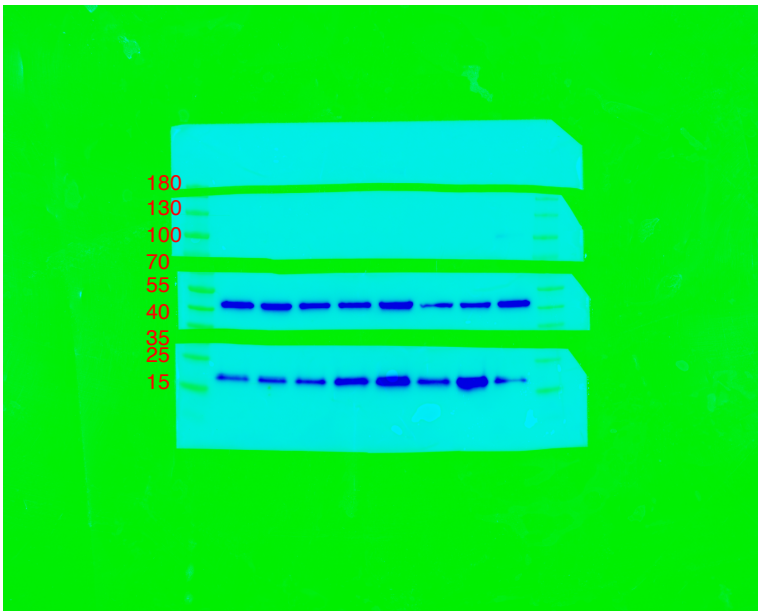
30 s exposure



60 s exposure



Colorimetric

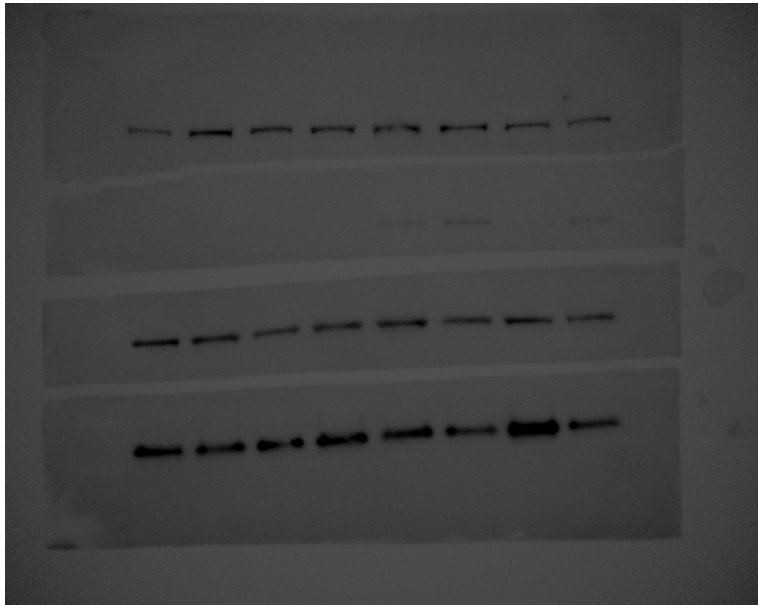


Composite

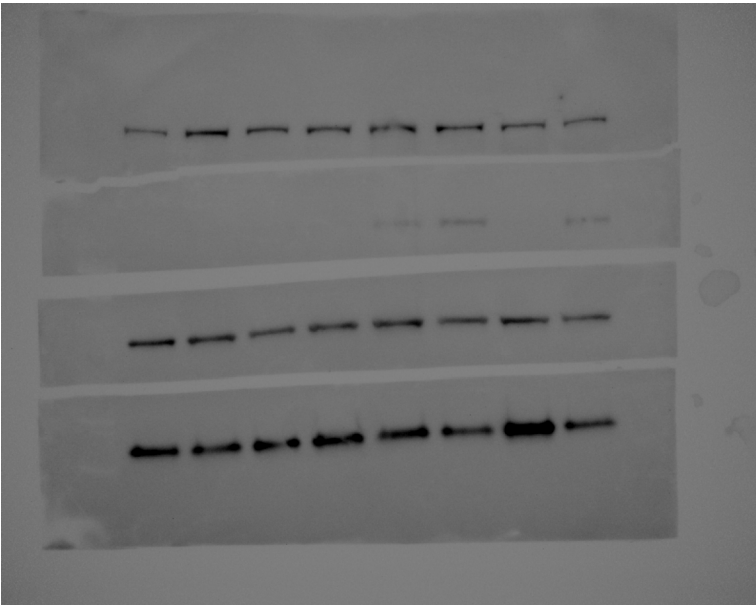
Cleaved PARP MW= 90 (kDa)  
 $\beta$ -Actin MW= 42 (kDa)

Samples were loaded into gels from **left** to **right**, with the protein ladder in the first lane.

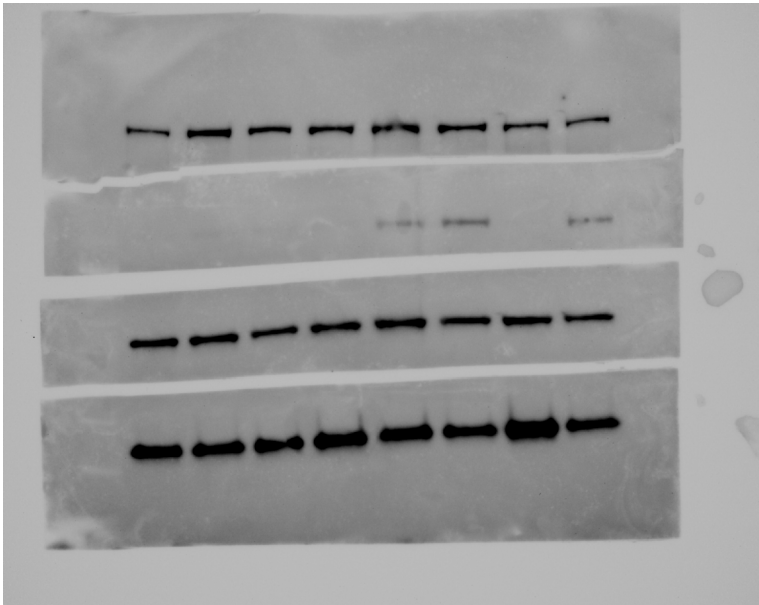
**Western blot analysis of mTOR, Cleaved-PARP and  $\beta$ -Actin in G-401 cell line after 24 and 72 h of amino acids deprivation**



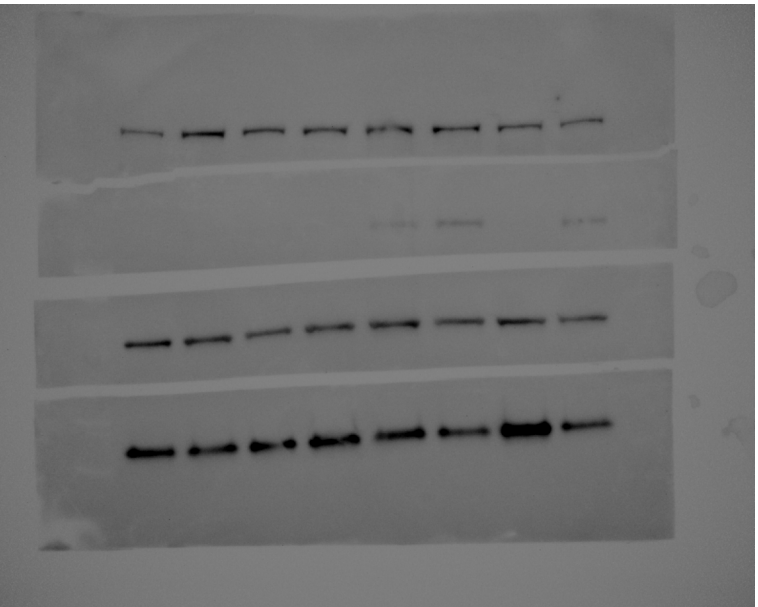
30 s exposure



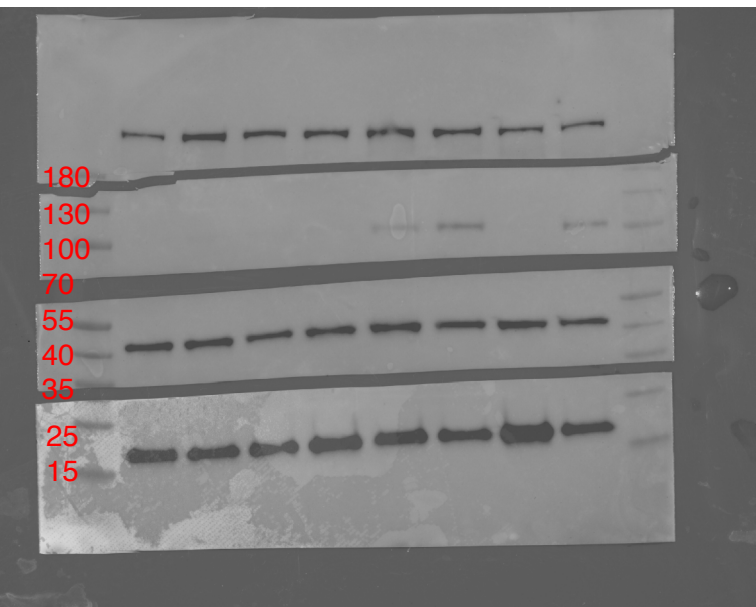
60 s exposure



300 s exposure



600 s exposure



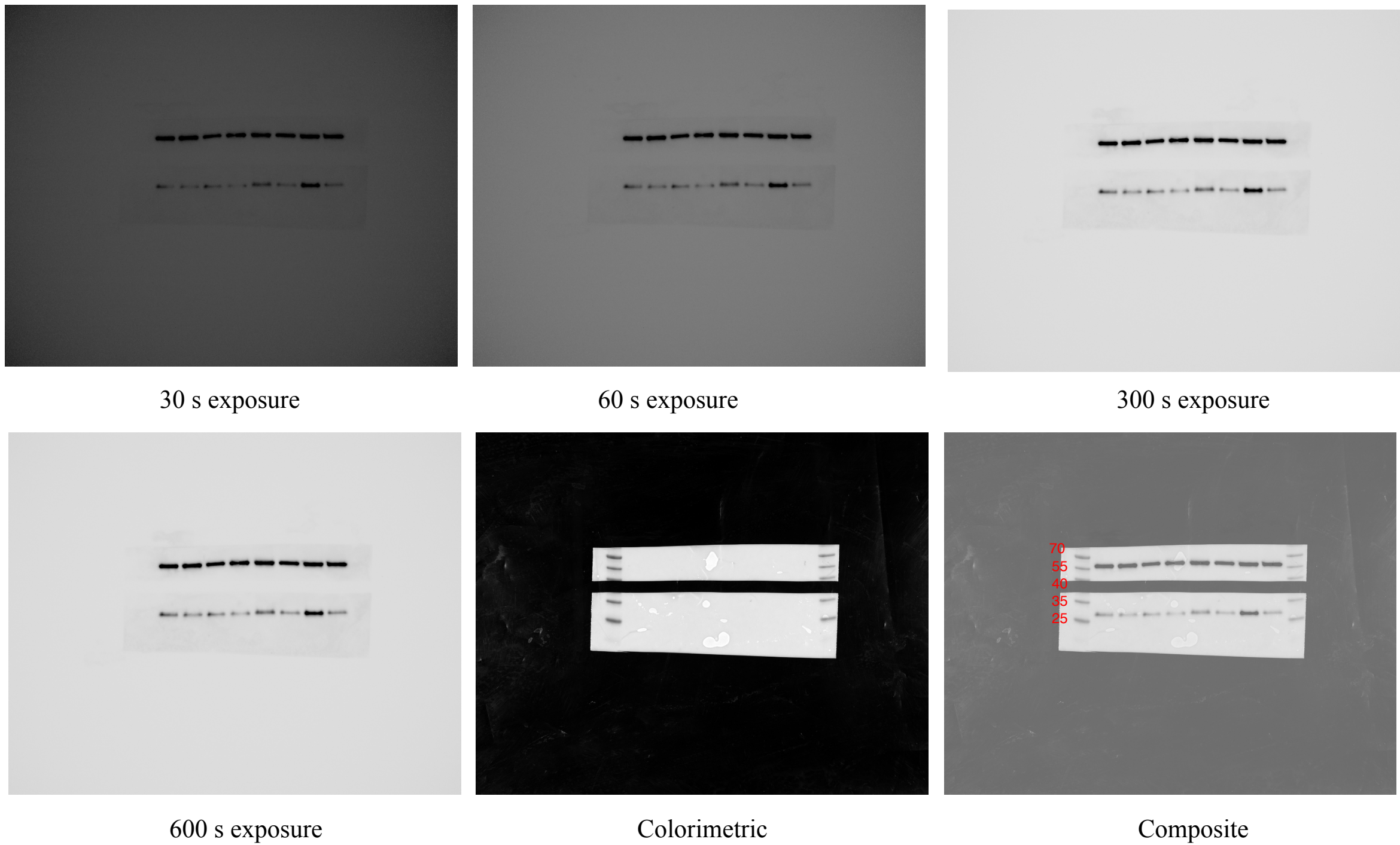
Composite

mTOR MW= 289 (kDa)  
Cleaved PARP MW= 90 (kDa)  
 $\beta$ -Actin MW= 42 (kDa)

Samples were loaded into gels from **right** to **left**, with the protein ladder in the first lane.



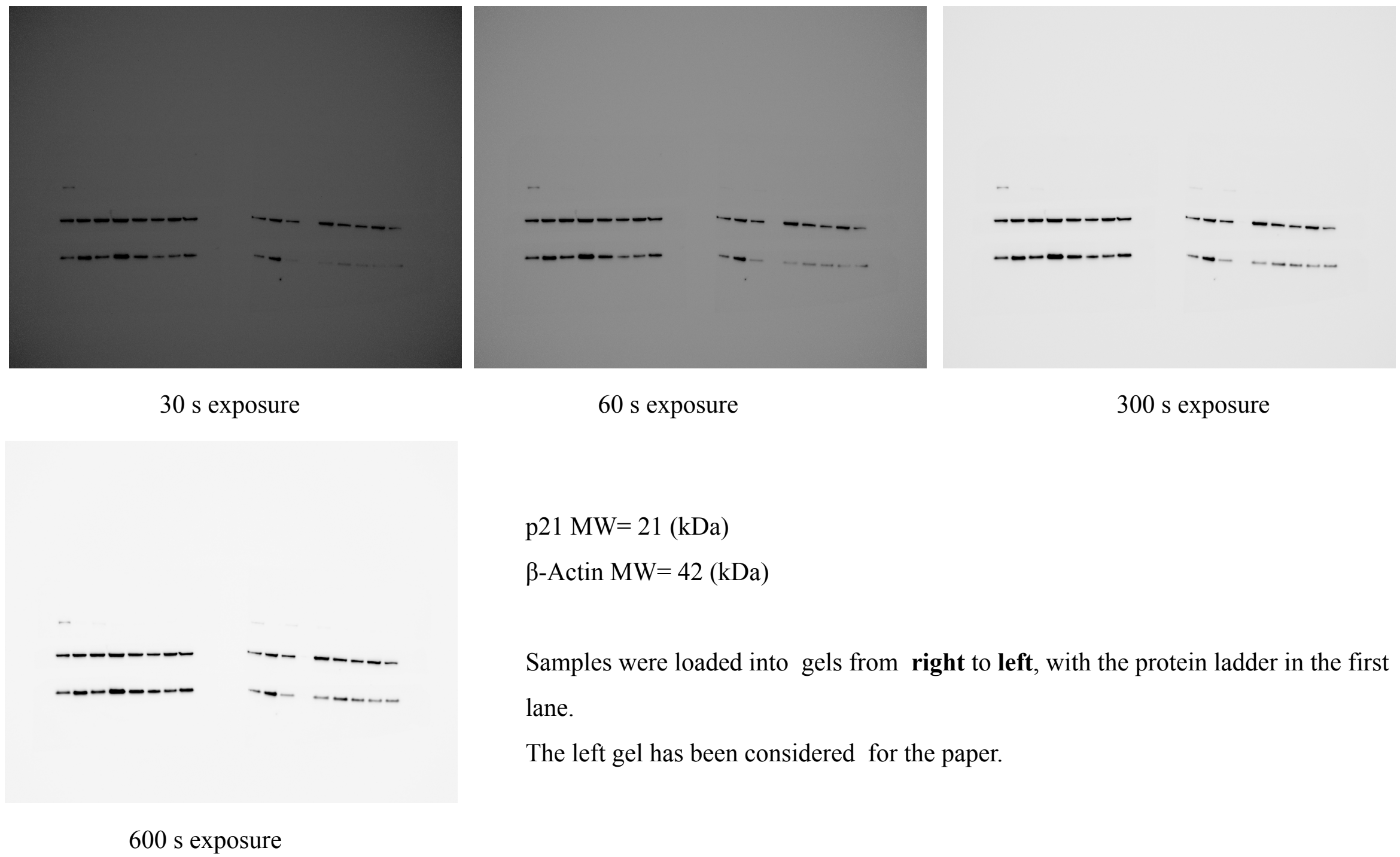
**e- Western blot analysis of p21 and β-Actin in G-401 cell line after 24 and 72 h of amino acids deprivation**



p21 MW= 21 (kDa)  
β-Actin MW= 42 (kDa)

Samples were loaded into gels from **left** to **right**, with the protein ladder in the first lane.

**Western blot analysis of p21 and β-Actin in G-401 cell line after 24 and 48 h of amino acids deprivation**



p21 MW= 21 (kDa)  
β-Actin MW= 42 (kDa)

Samples were loaded into gels from **right** to **left**, with the protein ladder in the first lane.

The left gel has been considered for the paper.