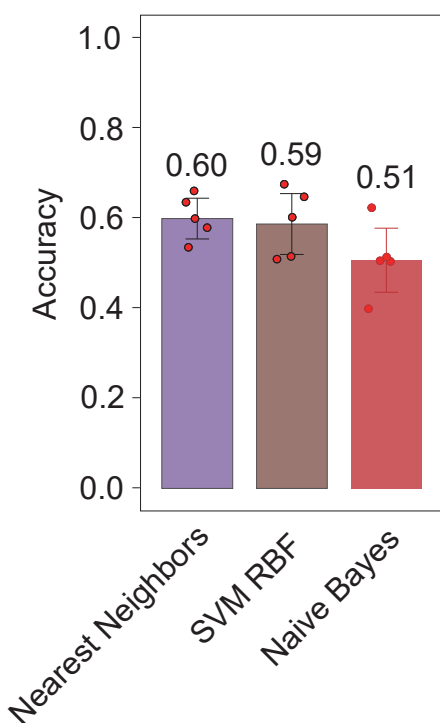


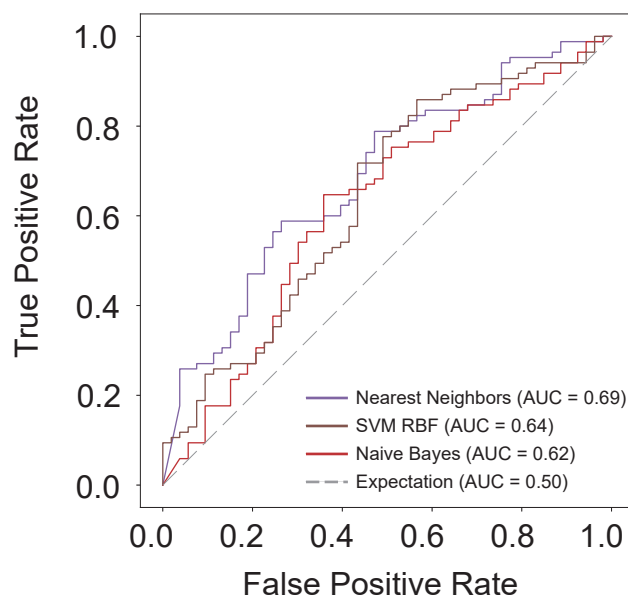
A

Model performance



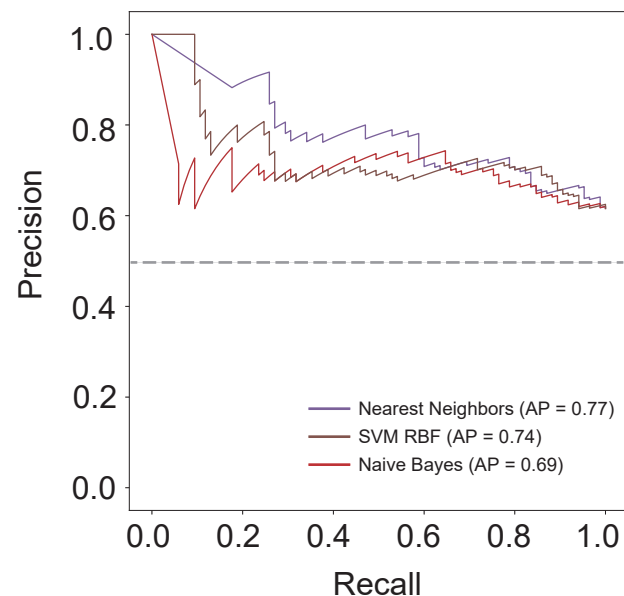
B

ROC curves



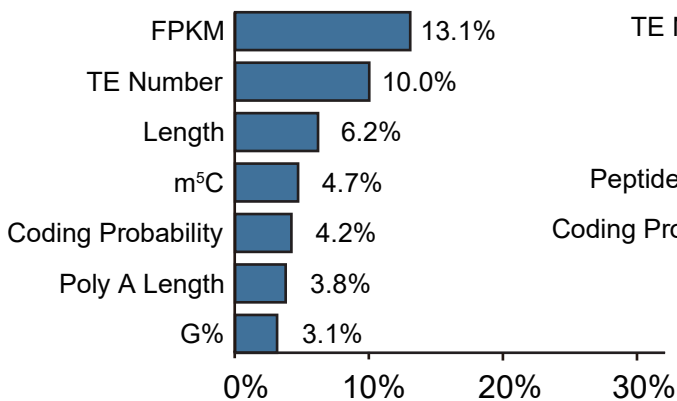
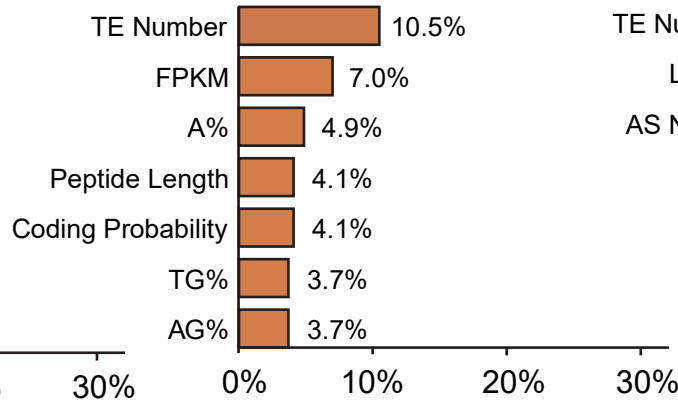
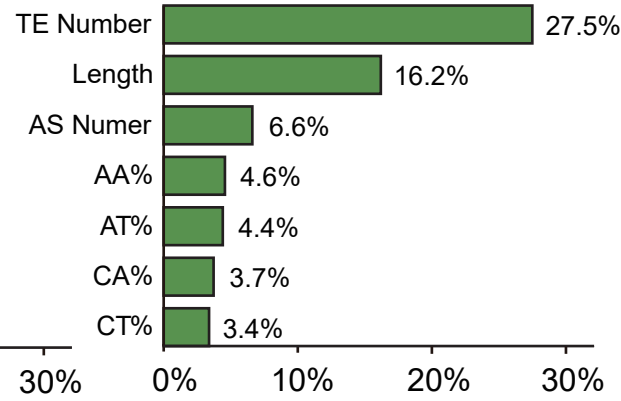
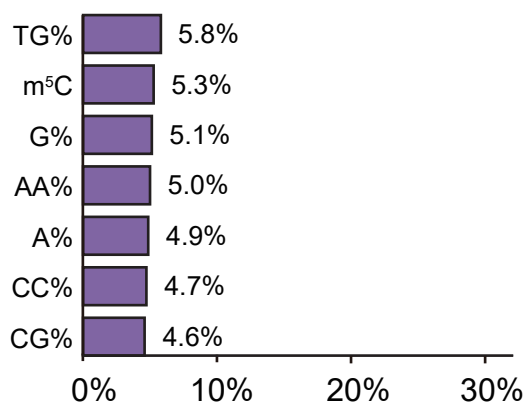
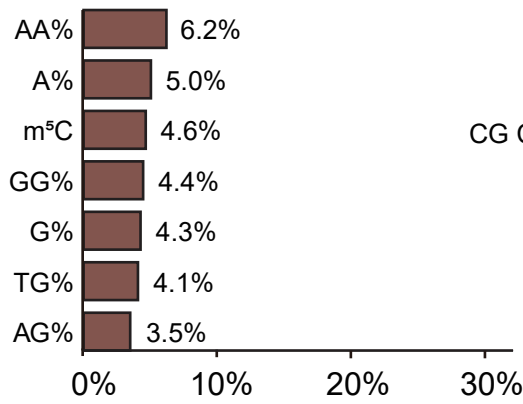
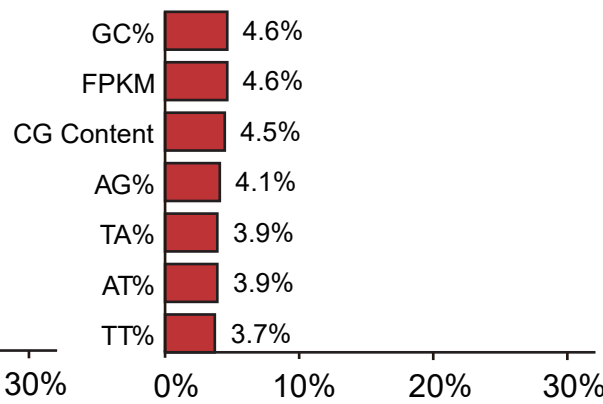
C

Precision-recall curves



D

Top 7 Features in Models

Random Forest
(Top 7 = 45.1%)XGBoost
(Top 7 = 37.9%)SVM Linear
(Top 7 = 66.5%)Nearest Neighbors
(Top 7 = 35.4%)SVM RBF
(Top 7 = 32.1%)Naive Bayes
(Top 7 = 29.4%)

Normalized Feature Importance (%)