

High-frequency water level oscillations in a coastal shallow lake

Ivica Vilibić^{1,2}, Maja Bubalo³, Petra Zemunik Selak⁴, Petra Pranić⁴, Ana Radovan¹, Hrvoje Mihanović⁴, Iva Dominović Novković¹*

¹ Ruđer Bošković Institute, Division for Marine and Environmental Research, Zagreb, Croatia

² Institute for Adriatic Crops and Karst Reclamation, Split, Croatia

³ University of Zagreb, Faculty of Science, Department of Geophysics, Zagreb, Croatia

⁴ Institute of Oceanography and Fisheries, Split, Croatia

* Correspondence to: I. Vilibić, ivica.vilibic@irb.hr

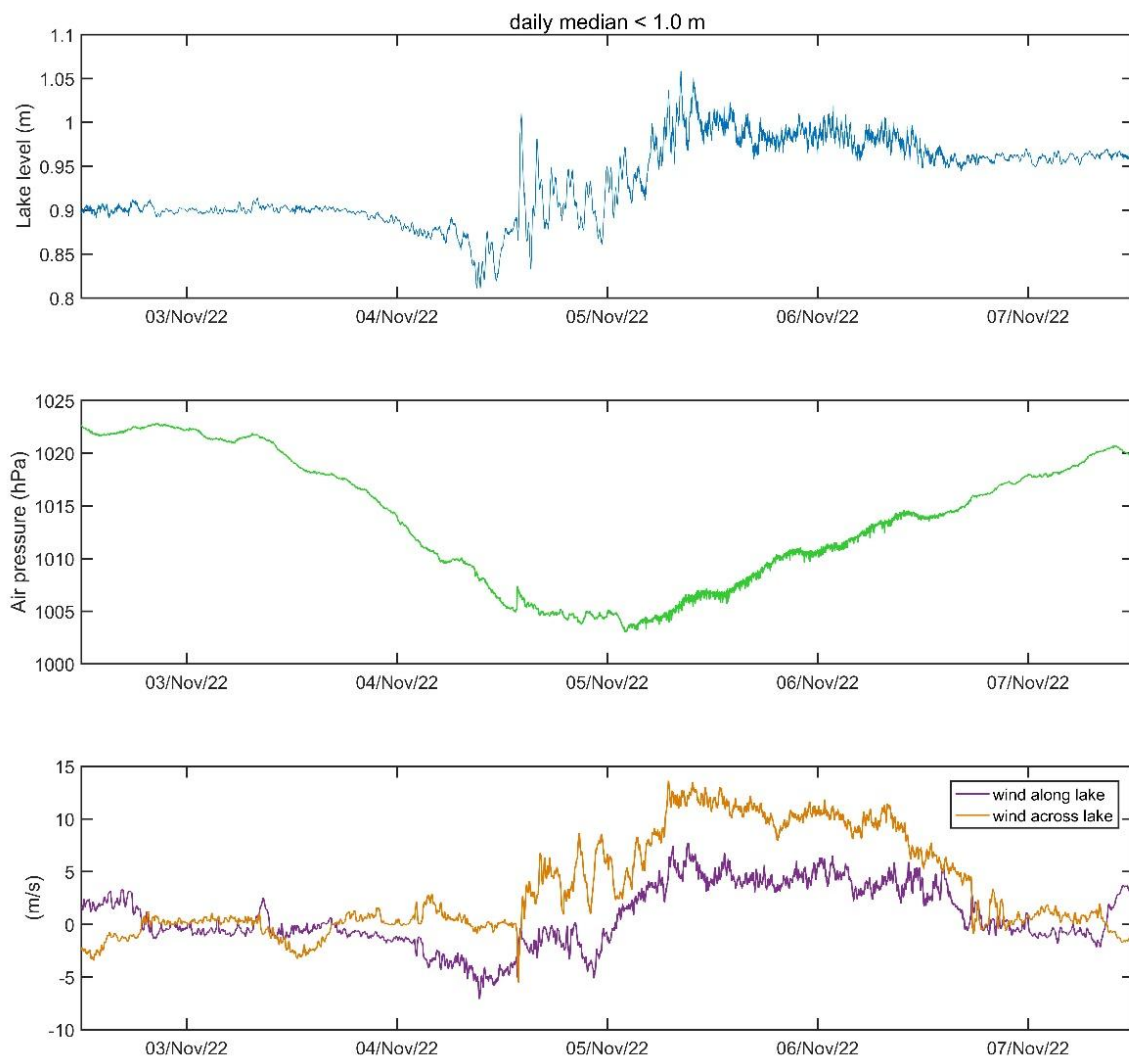


Figure S1. Water level oscillations (upper plot), air pressure (middle plot) and along- and across-lake wind speed (bottom plot) at Prosika station observed between 2 and 7 November 2022.

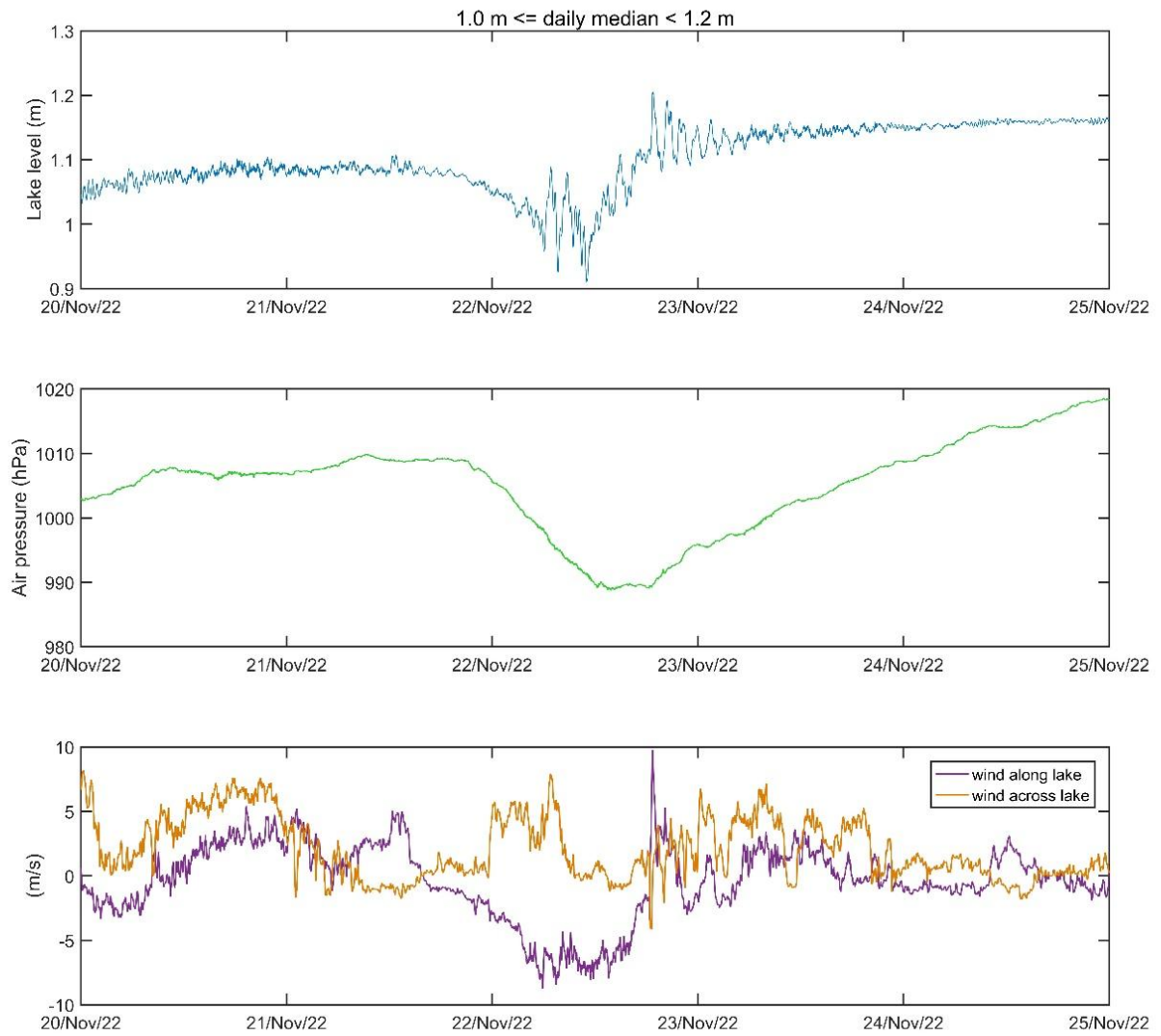


Figure S2. As in Fig. S1, but between 20 and 25 November 2022.

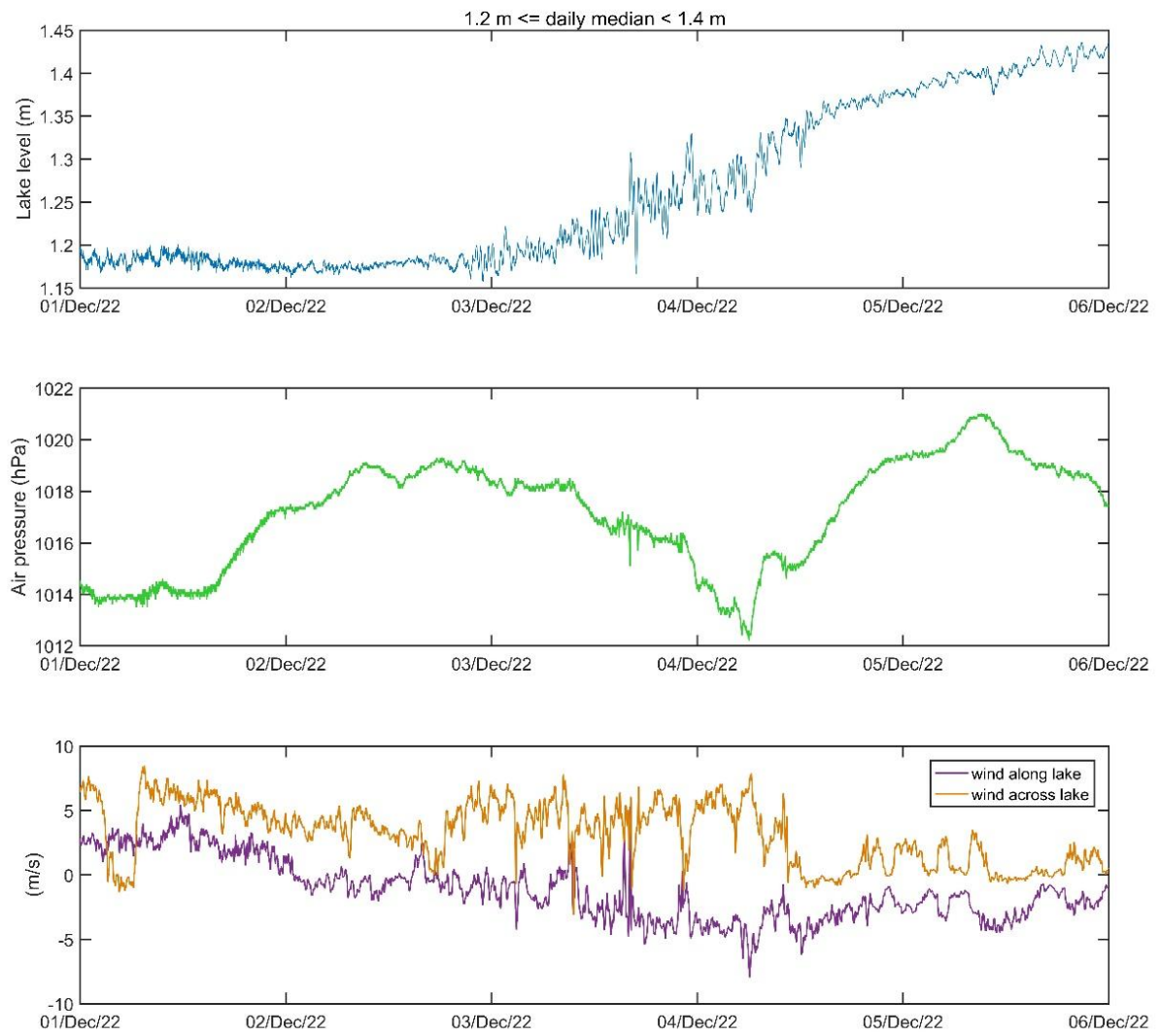


Figure S3. As in Fig. S1, but between 1 and 6 December 2022.

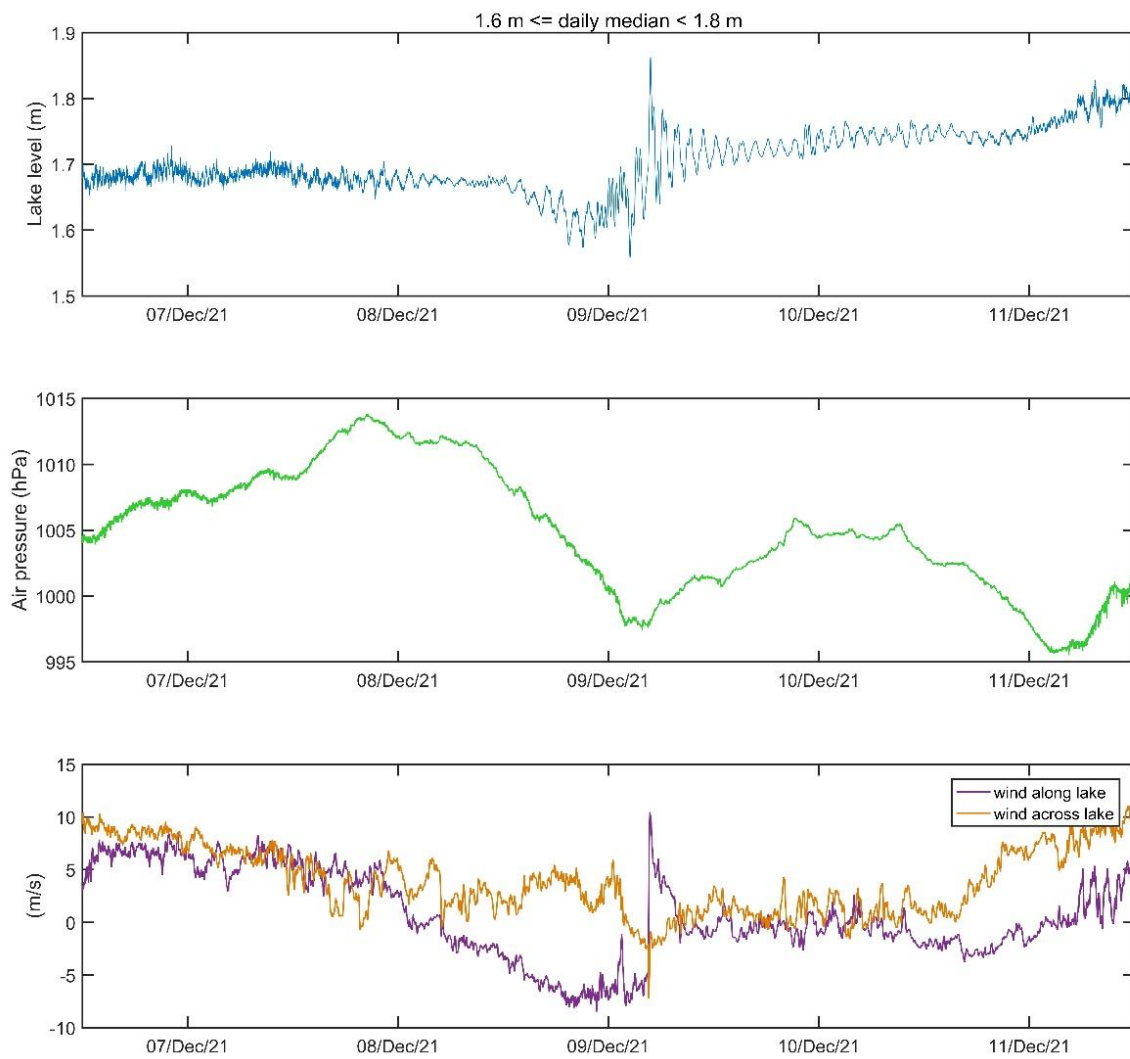


Figure S4. As in Fig. S1, but between 6 and 11 December 2021.

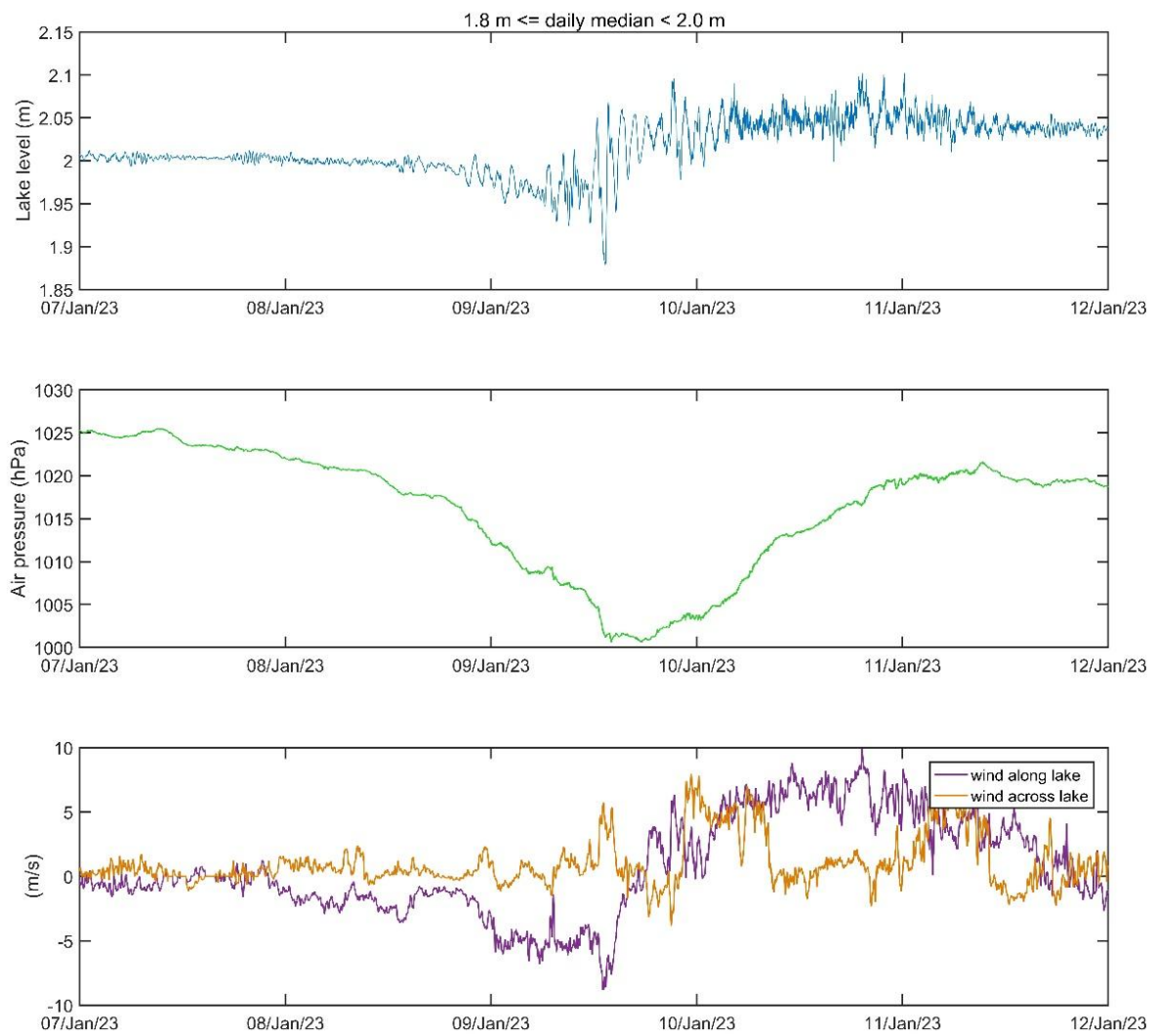


Figure S5. As in Fig. S1, but between 7 and 12 January 2023.

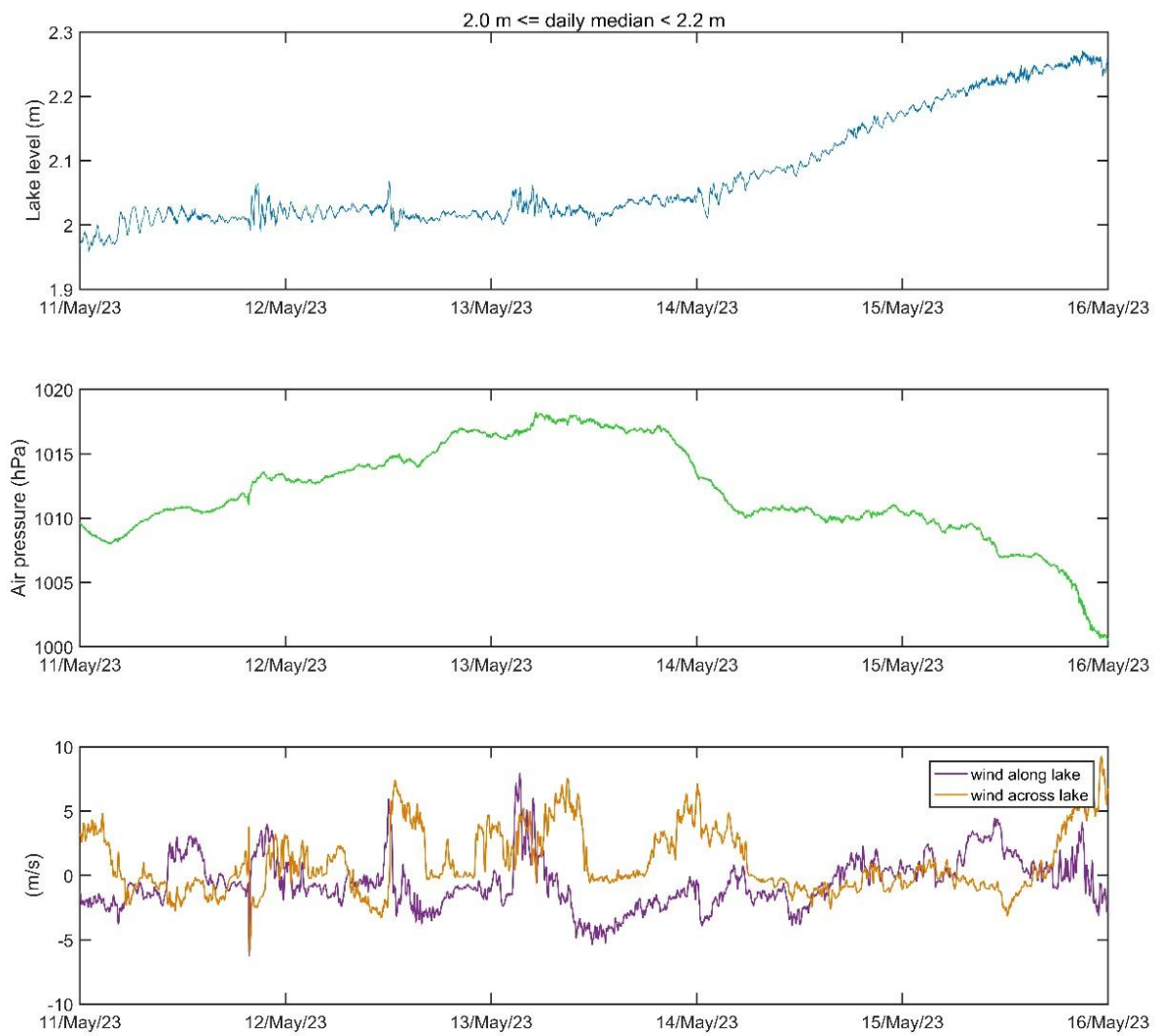


Figure S6. As in Fig. S1, but between 11 and 16 May 2023.

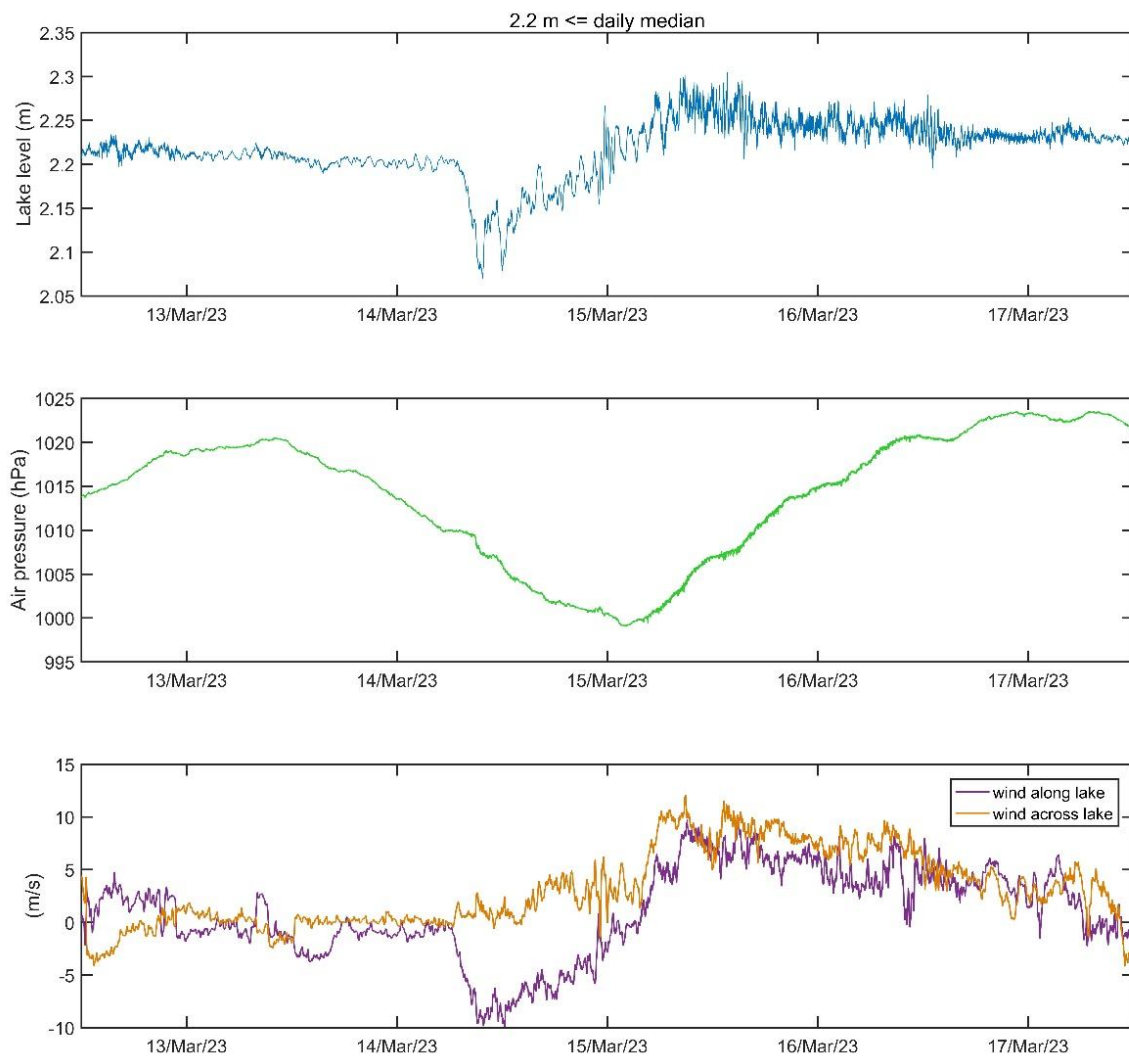


Figure S7. As in Fig. S1, but between 12 and 17 March 2023.

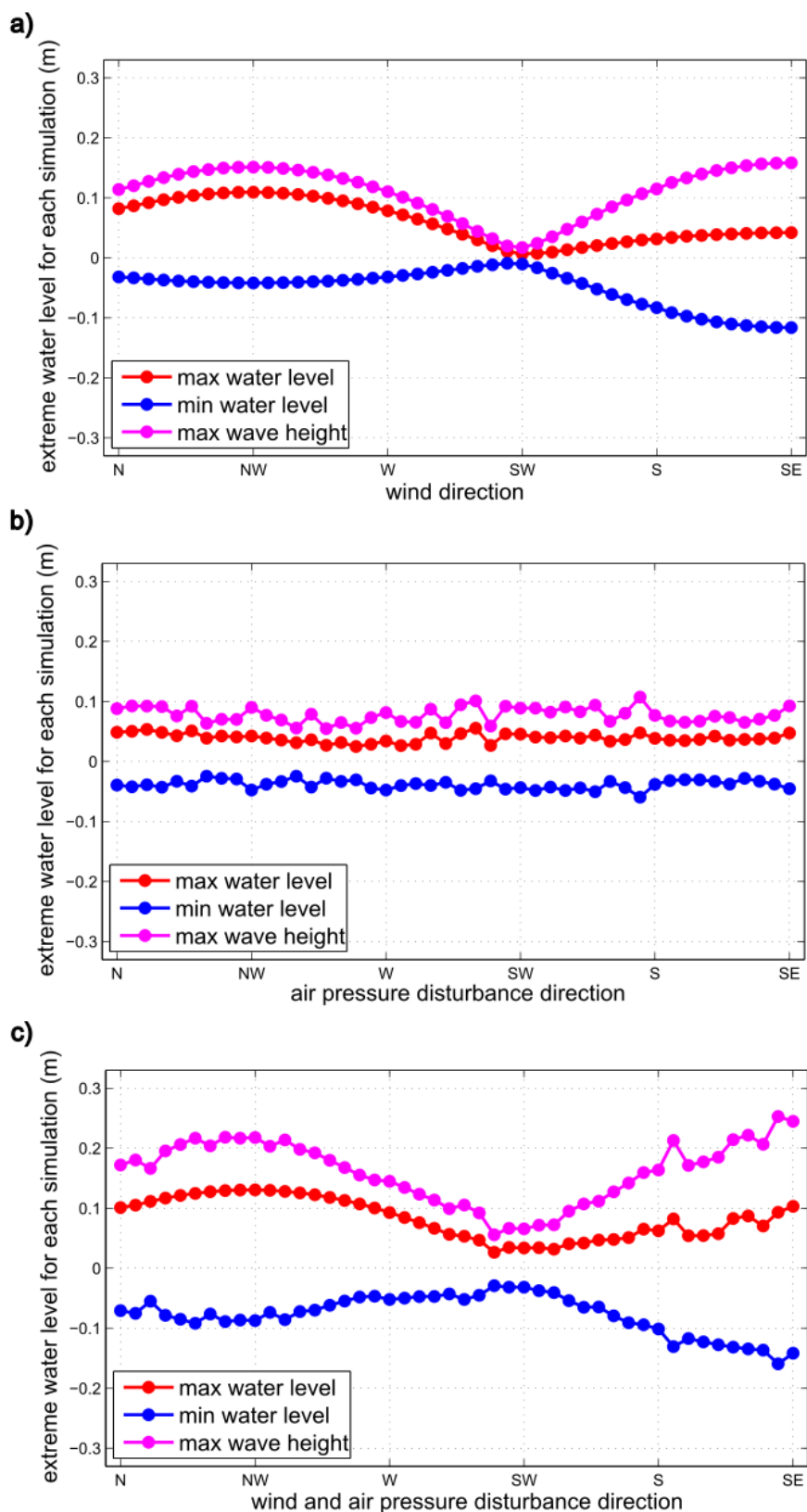


Figure S8. Maximum and minimum water levels, and maximum wave height at a grid point closest to the Prosika station in relation to the (a) wind direction (wind forcing only), (b) propagation direction of air pressure disturbances (air pressure forcing only), and (c) direction of joint wind and air pressure forcing, for sensitivity experiments with speeds of 10 m/s.

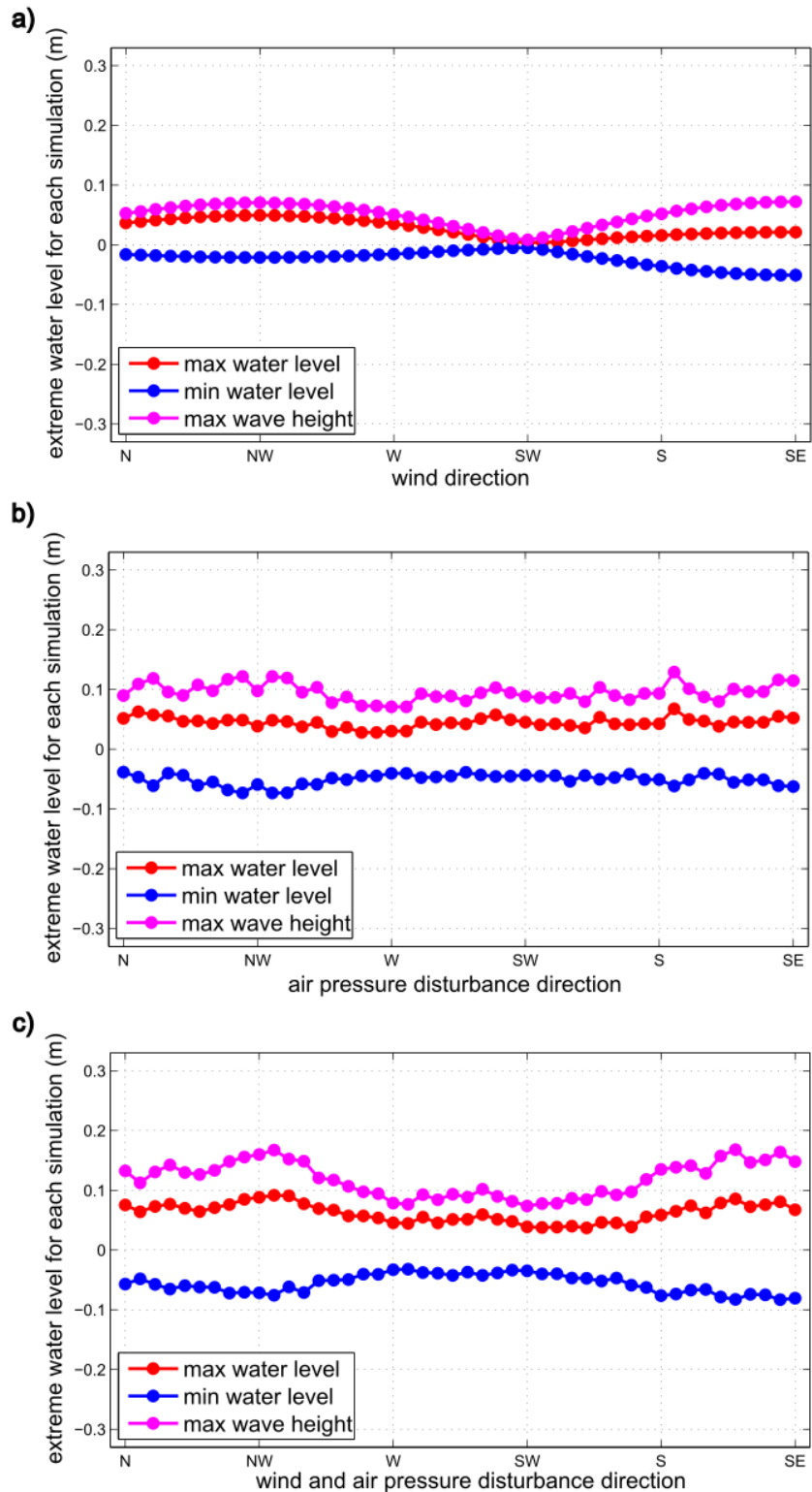


Figure S9. Maximum and minimum water levels, and maximum wave height at a grid point closest to the Prosika station in relation to the (a) wind direction (wind forcing only), (b) propagation direction of air pressure disturbances (air pressure forcing only), and (c) direction of joint wind and air pressure forcing, for sensitivity experiments with speeds of 7 m/s.