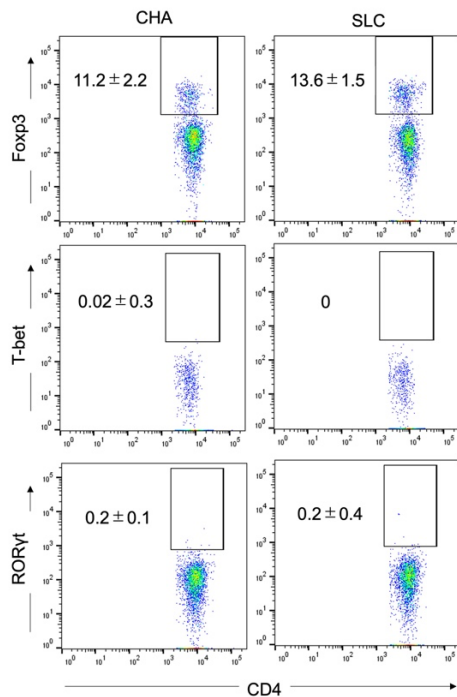
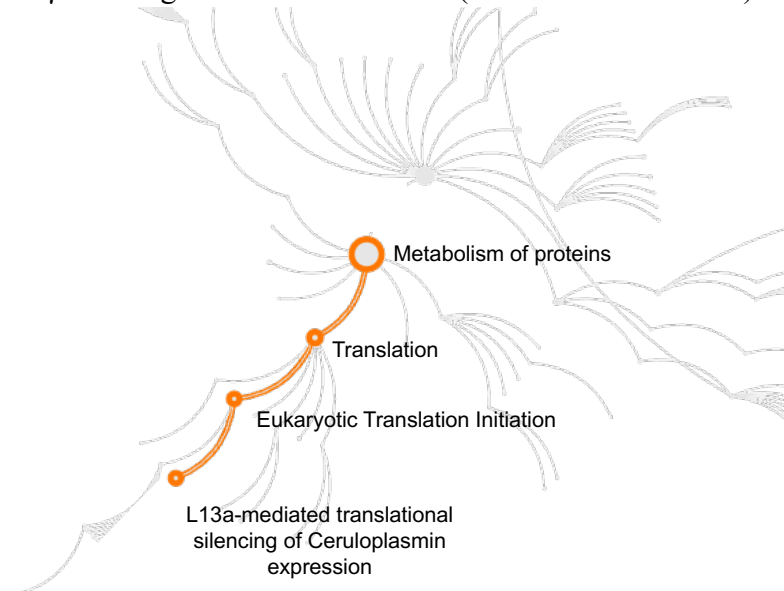


Supplementary Figures



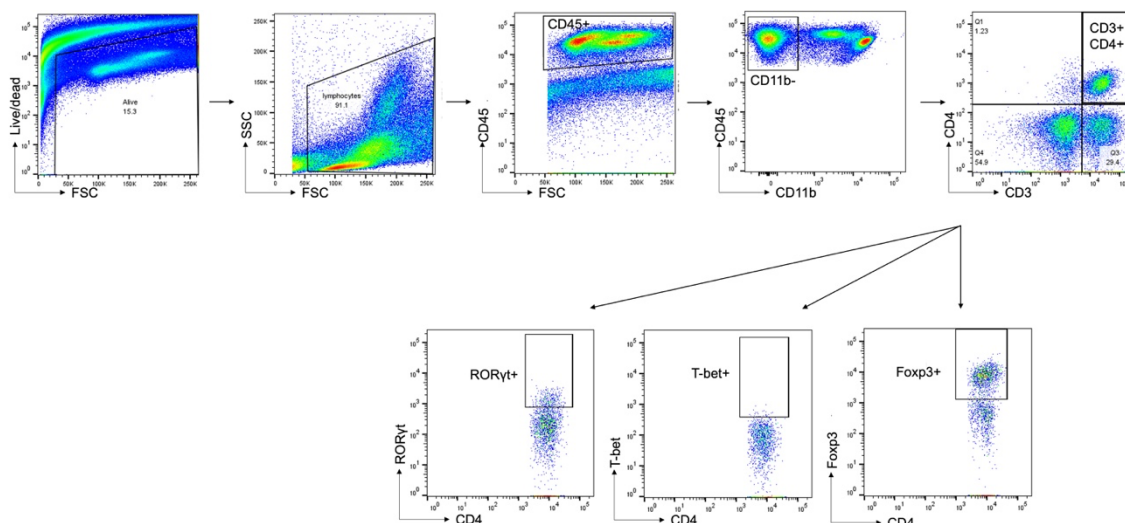
Supplementary Figure 1.

Characterization of Th cells in SLC and Charles River (CHA) mice at day 0. Representative flow cytometry plots depicting pre-DSS colonic FOXP3⁺, T-bet⁺, and RORγt⁺ cells gated on CD4⁺ T cells (CD45⁺CD11b⁻CD3⁺).



Supplementary Figure 2.

Schematic overrepresentation pathway related Ceruloplasmin expression using reactome pathway analysis.



Supplementary Figure 3. Flow cytometric gating strategy.